

Series 04

22.5mm 30.5mm IP65 10A 500VAC



Choose one component from each of the coloured sections to assemble a complete switch.

Product Profile

The Series 04 is a high quality switch range that includes pushbuttons, indicators, selectors, mushroom headed switches, key switches, and Emergency-stops.

Options include self cleaning, slow-make and snap-action switching elements.

- IP65 Protection
- Switch Rating:
Maximum Voltage, 500VAC
Maximum Thermal Current, $I_{th} = 10A$
230VAC/6A, 24VDC/10A
- Raised Mounting into 22.5mm cut out
- Flush Mounting into 30.5mm cut out
- Illumination using Ba9s Lamps or LED's
- All standard lenses are transparent with translucent diffuser
- Screw terminal or plug-in connections

Indicator



Indicator, round, full face, 22.5mm mounting

Colour	Part No.
Red	704.000.2
Yellow	704.000.4
Green	704.000.5
Blue	704.000.6
Clear	704.000.7

For complete switch also order



Indicator, flush mount, aluminium bezel, 30.5mm mounting

Colour	Part No.
Red	704.006.218
Yellow	704.006.418
Green	704.006.518
Blue	704.006.618
Clear	704.006.718

For complete switch also order

Non Illuminated pushbutton



Non illuminated raised pushbutton, grey plastic bezel, 22.5mm mounting

Colour	Part No., Momentary	Part No., Maintained
Red	704.010.2	704.040.2
Yellow	704.010.4	704.040.4
Green	704.010.5	704.040.5
Blue	704.010.6	704.040.6
Clear	704.010.7	704.040.7
Black	704.010.0	704.040.0

For complete switch also order **A**



Non illuminated raised pushbutton, aluminium bezel, 22.5mm mounting

Colour	Part No., Momentary	Part No., Maintained
Red	704.012.2	704.042.2
Yellow	704.012.4	704.042.4
Green	704.012.5	704.042.5
Blue	704.012.6	704.042.6
Clear	704.012.7	704.042.7
Black	704.012.0	704.042.0

For complete switch also order **A**

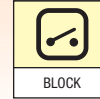


Non illuminated flush mount pushbutton, aluminium bezel, 30.5mm mounting

Colour	Part No., Momentary	Part No., Maintained
Red	704.012.218	704.042.218
Yellow	704.012.418	704.042.418
Green	704.012.518	704.042.518
Blue	704.012.618	704.042.618
Clear	704.012.718	704.042.718
Black	704.012.018	704.042.218

For complete switch also order **A**

Choose one component from each of the coloured sections to assemble a complete switch.
For other options or further information please contact your local sales office.



⊙ Illuminated pushbutton



Illuminated raised pushbutton, grey plastic bezel, 22.5mm mounting



Illuminated raised pushbutton, aluminium bezel, 22.5mm mounting



Illuminated flush mount pushbutton, aluminium bezel, 30.5mm mounting

Colour	Part No., Momentary	Part No., Maintained
● Red	704.030.2	704.060.2
● Yellow	704.030.4	704.060.4
● Green	704.030.5	704.060.5
● Blue	704.030.6	704.060.6
○ Clear	704.030.7	704.060.7

Colour	Part No., Momentary	Part No., Maintained
● Red	704.032.2	704.062.2
● Yellow	704.032.4	704.062.4
● Green	704.032.5	704.062.5
● Blue	704.032.6	704.062.6
○ Clear	704.032.7	704.062.7

Colour	Part No., Momentary	Part No., Maintained
● Red	704.032.218	704.062.218
● Yellow	704.032.418	704.062.418
● Green	704.032.518	704.062.518
● Blue	704.032.618	704.062.618
○ Clear	704.032.718	704.062.718

For complete switch also order **A**

For complete switch also order **A**

For complete switch also order **A**



Series 04

22.5mm 30.5mm IP65 10A 500VAC



Choose one component from each of the coloured sections to assemble a complete switch.

Emergency-stop switch



Emergency-stop, twist release, 37mm diameter, foolproof to EN 60947-5-1 and EN 418, use slow-make switching elements

Part No.
704.064.2

For complete switch also order **A**

Emergency-stop, key release



Emergency-stop, key release, 37 mm diameter, foolproof to EN 60947-5-1 and EN 418, use slow-make switching elements

Part No.
704.066.2

For complete switch also order **A**

Mushroom headed pushbutton



Mushroom headed pushbutton, plastic bezel and aluminium bezel, 22.5mm mounting, function momentary

Colour	Part No., Plastic	Part No., Aluminium
● Red	704.070.2	704.071.2
● Yellow	704.070.4	704.071.4
● Green	704.070.5	704.071.5
● Black	704.070.0	704.071.0

For complete switch also order **A**



Keylock switch



Keylock switch 2 position, raised, 22.5mm mounting

Drawing	Part No.	Momentary/Maintained	Key rem.
1	704.123.0	Momentary	A
2	704.121.0	Maintained	C

For complete switch also order **A**

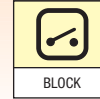


Keylock switch 2 position, flush mount, 30.5mm mounting

Drawing	Part No.	Momentary/Maintained	Key rem.
3	704.123.018	Momentary	A
4	704.121.018	Maintained	C

For complete switch also order **A**

Choose one component from each of the coloured sections to assemble a complete switch.
For other options or further information please contact your local sales office.



Keylock switch **Selector switch**



Keylock switch 3 position, raised, 22.5mm mounting

Keylock switch 3 position, flush mount, 30.5mm mounting

Selector switch short lever 2 position, raised, 22.5mm mounting

Drawing	Part No.	Momentary/Maintained	Key rem.	Drawing	Part No.	Momentary/Maintained	Key rem.	Drawing	Part No.	Momentary/Maintained	Bezel
5	704.115.0	Momentary	A	7	704.115.018	Momentary	A	8	704.412.0	Momentary	Grey plastic
6	704.114.0	Maintained	A	7	704.114.018	Maintained	A	8	704.413.0	Momentary	Aluminium
								9	704.410.0	Maintained	Grey plastic
								9	704.411.0	Maintained	Aluminium

For complete switch also order **A**

For complete switch also order **A**

For complete switch also order **A**

Selector switch



Selector switch short lever 2 position, flush mount, 30.5mm mounting

Selector switch short lever 3 position, raised, 22.5mm mounting

Selector switch short lever 3 position, flush mount, 30.5mm mounting

Drawing	Part No.	Momentary/Maintained	Bezel	Drawing	Part No.	Momentary/Maintained	Bezel	Drawing	Part No.	Momentary/Maintained	Bezel
10	704.413.018	Momentary	Aluminium	12	704.404.0	Momentary	Grey plastic	13	704.405.018	Momentary	Aluminium
11	704.411.018	Maintained	Aluminium	12	704.405.0	Momentary	Aluminium	13	704.403.018	Maintained	Aluminium
				12	704.402.0	Maintained	Grey plastic				
				12	704.403.0	Maintained	Aluminium				

For complete switch also order **A**

For complete switch also order **A**

For complete switch also order **A**

Series 04

22.5mm 30.5mm IP65 10A 500VAC

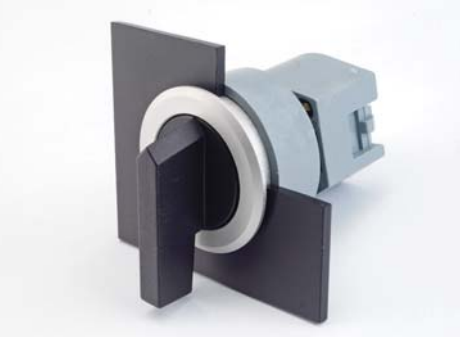
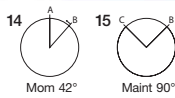


Choose one component from each of the coloured sections to assemble a complete switch.

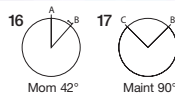
Selector switch



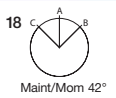
Selector switch long lever 2 position, raised, 22.5mm mounting



Selector switch long lever 2 position, flush mount, 30.5mm mounting



Selector switch long lever 3 position, raised, 22.5mm mounting



Drawing	Part No.	Momentary/Maintained	Bezel
14	704.102.0	Momentary	Grey plastic
14	704.103.0	Momentary	Aluminium
15	704.100.0	Maintained	Grey plastic
15	704.101.0	Maintained	Aluminium

Drawing	Part No.	Momentary/Maintained	Bezel
16	704.103.018	Momentary	Aluminium
17	704.101.018	Maintained	Aluminium

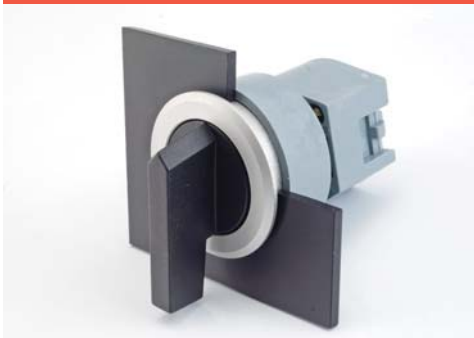
Drawing	Part No.	Momentary/Maintained	Bezel
18	704.094.0	Momentary	Grey plastic
18	704.095.0	Momentary	Aluminium
18	704.092.0	Maintained	Grey plastic
18	704.093.0	Maintained	Aluminium

For complete switch also order **A**

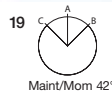
For complete switch also order **A**

For complete switch also order **A**

Selector switch



Selector switch long lever 3 position, flush mount, 30.5mm mounting



Buzzer



Buzzer, plastic bezel, raised, 22.5mm mounting, 24VDC, 95dB ± 8 at a distance of 0.1m



Buzzer, plastic bezel, flush mount, 30.5mm mounting, 24VDC, IP40, 95dB ± 8 at a distance of 0.1m

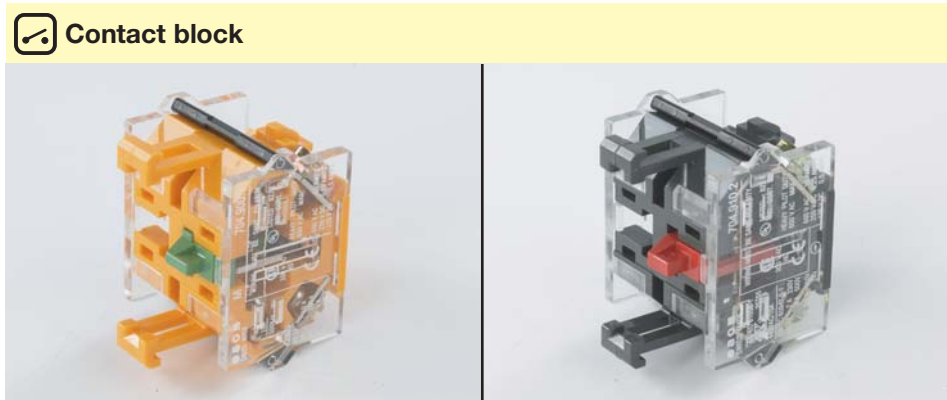
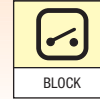
Drawing	Part No.	Momentary/Maintained	Bezel
19	704.095.018	Momentary	Aluminium
19	704.093.018	Maintained	Aluminium

Part No.	Front finish
14-810.002	Black plastic
14-810.902	Chromium-plated

Part No.	Front finish
14-810.910	Black plastic
14-810.918	Chromium-plated

For complete switch also order **A**

Choose one component from each of the coloured sections to assemble a complete switch.
For other options or further information please contact your local sales office.



Contact block, screw terminal, snap-action with silver self-cleaning contacts

Contact block, screw terminal, slow-make with silver forced opening contacts

LED, Ba9s, single chip, 6 Volt and 12 Volt

Part No.	Contact type
704.900.1	1NO
704.900.2	1NC
704.900.3	2NO
704.900.4	2NC
704.900.5	1NO/1NC

Part No.	Contact type
704.910.2	1NC
704.910.4	2NC
704.910.5	1NO/1NC

Colour	Part No.	Voltage
Red	10-2506.1082	6VDC, 10/17mA
Yellow	10-2506.1084	6VDC, 10/17mA
Green	10-2506.1085	6VDC, 10/17mA
Blue	10-2506.1086	6VDC, 10/17mA
White	10-2506.1089	6VDC, 10/17mA
Red	10-2509.1142	12VAC/DC, 15mA
Yellow	10-2509.1144	12VAC/DC, 15mA
Green	10-2509.1145	12VAC/DC, 15mA
Blue	10-2509.1146	12VAC/DC, 15mA
White	10-2509.1149	12VAC/DC, 15mA

For complete switch also order

For complete switch also order

LED



LED, Ba9s, single chip, 24 Volt and 28 Volt

LED, Ba9s, single chip, 48 Volt

LED, Ba9s, single chip, 130 Volt and 230 Volt

Colour	Part No.	Voltage
Red	10-2512.1142	24VAC/DC, 15mA
Yellow	10-2512.1144	24VAC/DC, 15mA
Green	10-2512.1145	24VAC/DC, 15mA
Blue	10-2512.1146	24VAC/DC, 15mA
White	10-2512.1149	24VAC/DC, 15mA
Red	10-2513.1142	28VAC/DC, 15mA
Yellow	10-2513.1144	28VAC/DC, 15mA
Green	10-2513.1145	28VAC/DC, 15mA
Blue	10-2513.1146	28VAC/DC, 15mA
White	10-2513.1149	28VAC/DC, 15mA

Colour	Part No.	Voltage
Red	10-2519.1052	48VAC/DC, 6mA
Yellow	10-2519.1054	48VAC/DC, 6mA
Green	10-2519.1055	48VAC/DC, 6mA
Blue	10-2519.1056	48VAC/DC, 6mA
White	10-2519.1059	48VAC/DC, 6mA

Colour	Part No.	Voltage
Red	10-2H24.2052	130VAC / 5mA
Yellow	10-2H24.2054	130VAC / 5mA
Green	10-2H24.2055	130VAC / 5mA
Blue	10-2H24.2056	130VAC / 5mA
White	10-2H24.2059	130VAC / 5mA
Red	10-2H25.2042	230VAC / 3mA
Yellow	10-2H25.2044	230VAC / 3mA
Green	10-2H25.2045	230VAC / 3mA
Blue	10-2H25.2046	230VAC / 3mA
White	10-2H25.2049	230VAC / 3mA

Series 04

22.5mm 30.5mm IP65 10A 500VAC



Choose one component from each of the coloured sections to assemble a complete switch.

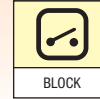
A Accessories

<p>Lens cap, round, transparent, plastic for raised and flush indicators with bezel and pushbutton actuators</p>		<p>Protective cover, raised pushbutton</p>	<p>Protective front ring with silicon membrane for raised or flush mount pushbutton</p>
Colour	Part No.	Part No.	Part No. Size
● Red	704.602.2	704.925.0	704.600.3 29mm Ø for raised pushbutton
● Yellow	704.602.4		704.955.3 35mm Ø for flush mount pushbutton
● Green	704.602.5		
● Blue	704.602.6		
○ Clear	704.602.7		
<p>For complete lens also order diffuser 704.609.9 (see page 21)</p>			

A Accessories

<p>Emergency-stop protective shroud, yellow painted aluminium with 22.5mm mounting hole</p>	<p>Emergency-stop switch label, 60mm diameter, English, French and German</p>	<p>Emergency-stop switch enclosure with 22.5mm mounting hole, 83mm (w) x 83mm (h) x 59mm (d)</p>	
Part No.	Part No.	Markings	Part No.
704.927.4	704.963.6	Emergency stop	704.944.33
	704.963.5	Not Aus	
	704.963.7	Arret D'urgence	

Choose one component from each of the coloured sections to assemble a complete switch.
For other options or further information please contact your local sales office.



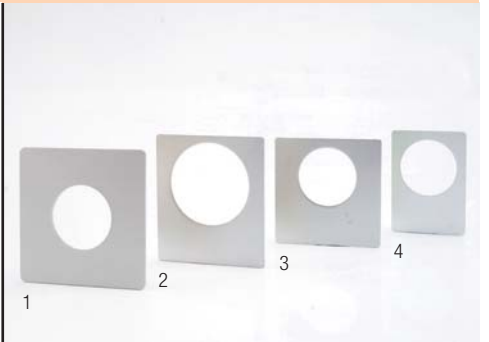
A Accessories



Blanking plate



Lens, LED and lamp remover



Legend plate, adhesive, natural anodised aluminium finish for raised and flush mount pushbuttons

Part No.	Mounting hole	Part No.	Image	Part No.	Size	Mounting hole
704.960.7	22.5mm Ø	700.006.0	1	704.962.7	48 x 48mm	22.5mm Ø
704.964.8	30.5mm Ø		2	704.962.6	42 x 48mm	30.5mm Ø
			3	704.962.5	42 x 42mm	22.5mm Ø
			4	704.962.0	30 x 42mm	22.5mm Ø

