

Style	Dimensions (mm)				
	D <sub>max</sub>	L <sub>max</sub>	A	d	e
N..3..	1,8	3,9	53	0,5	5,08
N..4..	2,5	6,2	53	0,6	7,62
N..5..	3,3	8,7	53	0,6	12,70

• The NK3 resistor can be cropped and bent to 5.08 mm pitch.

• taping corresponds to IEC286 and EIA296D, see page 102  
• D and L measured in accordance with IEC294  
• d according to IEC301

## Technical Characteristics

Parameter	Unit	NT3S	N..3	NT4S	NT..4	NT..5
Power Rating at 70°C	W	0,125	0,25	0,25	0,5	0,5
Limiting Element Voltage	V ≈	200	200	350	350	350
Isolation Voltage	V-	>500	>500	>700	>700	>700
Thermal Resistance (maximum)	K/W	170	170	145	145	110
Terminal Strength, axial	N	>40	>40	>50	>50	>50
Weight	g	0,15	0,15	0,30	0,30	0,50
Failure Rate	10 <sup>-9</sup> /h	≤10				
Insulation Resistance	Ω	≥10 <sup>11</sup>				
Category Temperature Range	°C	-55/+155 <sup>1)</sup>				

<sup>1)</sup> for TC ≤ 15 ppm/°C: temperature range -25°C ... +85°C

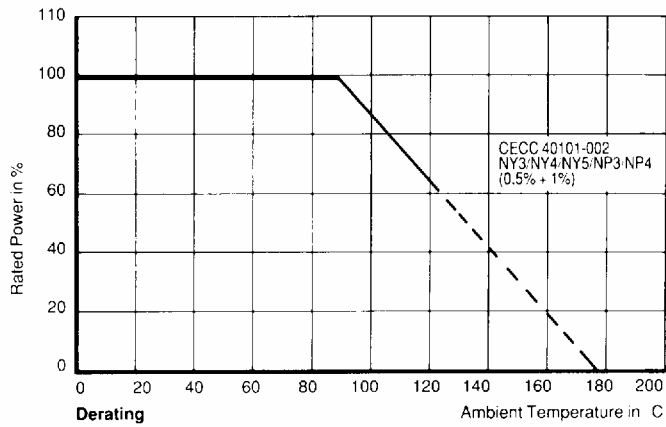
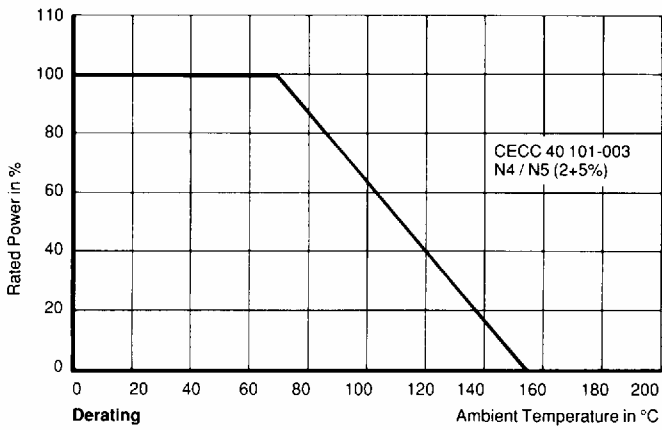
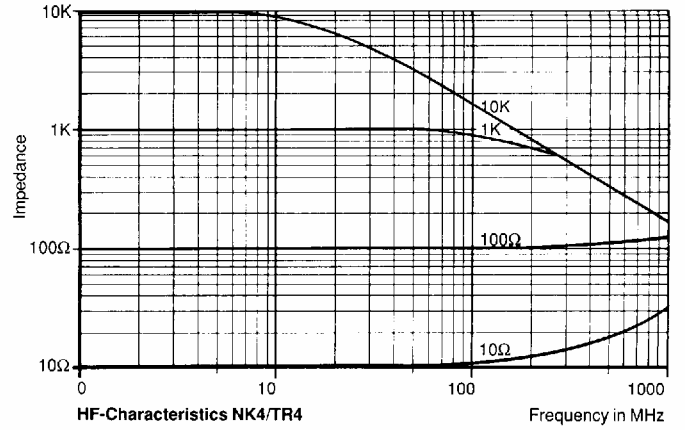
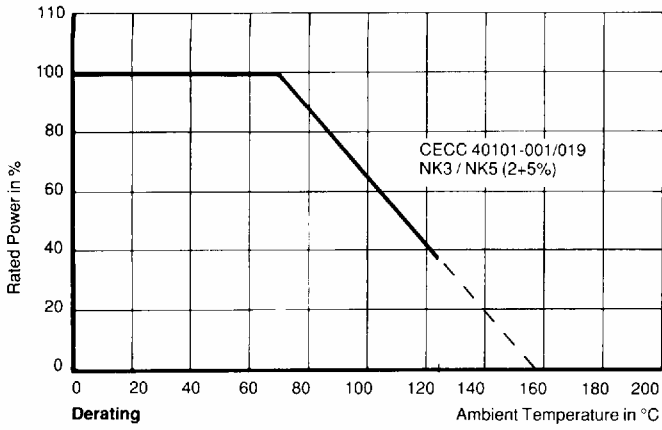
## Ordering Information

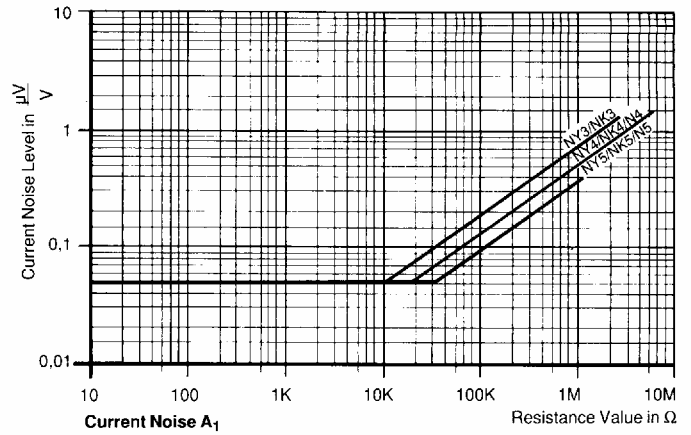
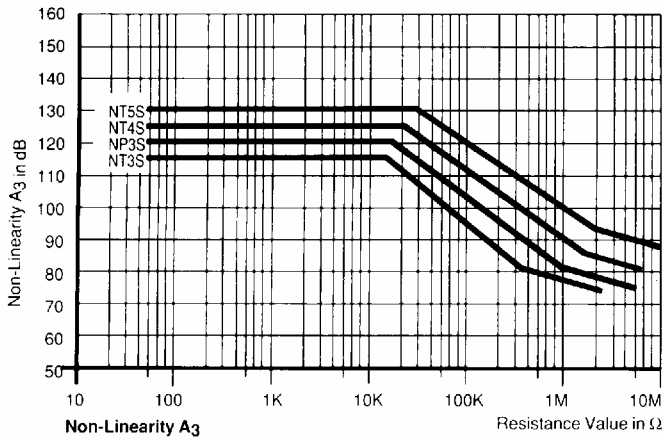
NK3 Style	1,8K Resistance Value Ω	± 2 Tolerance %	A5 Packaging
--------------	-------------------------------	-----------------------	-----------------

## Packaging

Style	Tolerance %	TC ppm/°C	pieces/ reel	min. quantity per order	pieces/ box	min. quantity per order
NT3S/NP3S	0,1 ... 1	15 - 25	5000	1	100	1
NY3	0,5	50	5000	1	500	1
NY3	1	50	5000	1	1000	1
NK3	1 ... 5	100	5000	1	1000	1
NY3CC/NK3CC	1 ... 5	50 - 100	-	-	500	1
NT4S/NP4S	0,1 ... 1	15 - 25	5000	1	100	1
NY4	0,5 ... 1	50	5000	1	500	1
NK4/N4	2 ... 5	100 - 200	5000	1	1000	1
NT5S/NP5S	0,1 ... 1	15 - 25	2500	1	100	1
NY5/NK5/N5	0,5 ... 5	50 - 20	2500	1	500	1

• further information about packaging: see page 102





### Performance

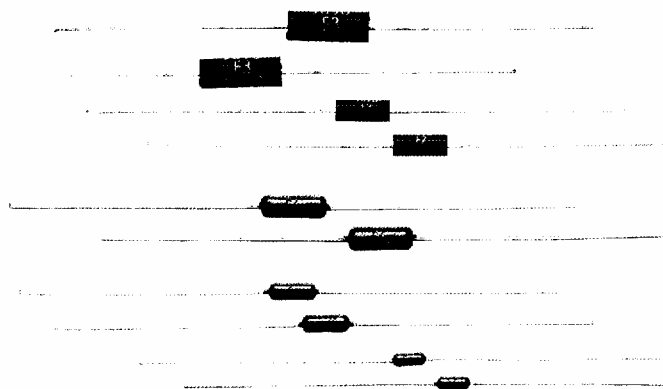
Test	Conditions of test	*)	test results
Endurance at 70°C rated power (P70)	IEC 115-1 4.25.1 1000 h at 70°C	1 2 3	≤ ±0,15% ≤ ±0,1% ≤ ±0,1% ... ±0,4%
Endurance at upper category temperature	IEC 115-1 4.25.3 1000 h at 155°C	1 2 3	≤ ±0,2% ≤ ±0,15% ≤ ±0,2%
Overload-Test	IEC 115-1 4.13 2,5 x rated power or twice the limiting element voltage 2s for N..3.. and 5s styles >N..3..	1 2 3	≤ ±0,03% ≤ ±0,01% ≤ ±0,03%
Thermal Shock	IEC 115-1 4.16 IEC 68-2-14 Rapid change between upper and lower category temperature	1 2 3	≤ ±0,04%
Climatic sequence	IEC 115-1 4.23 dry heat, damp heat cyclic, cold, low air pressure	1 2 3	≤ ±0,1%
Damp heat steady state	IEC 115-1 4.24 IEC 68-2-3 56 days at 40°C and 93% relative humidity and U = 0,1 x rated power	1 2 3	≤ ±0,2%
Resistance to soldering heat	IEC 115-1 IEC 68-2-20 10s at 260°C solder bath temperature	1 2 3	≤ ±0,04%
Robustness of terminations	IEC 115-1 4.16 IEC 68-2-21 tensile, bending and torsion	1 2 3	≤ ±0,01%

\*) 1 ± NK3, NK4, NK5 tolerance 2% ... 5%  
2 ± NY3, NY4, NY5 tolerance 0,5 ... 1%  
3 ± N4, N5 tolerance 2% ... 5%.

### Applicable Specifications

- CECC 40101-001/002/003/019
- MIL/UTE/DIN/BS CECC

- ESA-SCC 4001 001/002/005/007/009



**Features**

- excellent mechanical and electrical characteristics
- good long term stability and reliability
- designed for applications in military, aviation and space

**Style – SOVCOR**

Style	P at		ESA-Style	Limit. Voltage V <sub>≅</sub>	TC ppm/°C	Tolerance %	Resistance Range Ω	E-Series
	125°C	70°C						
2H3	–	0,125	4001 005	200	100	1	10 – 511K	96
						2	10 – 510K	24
2H4	–	0,25	4001 006	250	100	1	10 – 1M	96
						2	10 – 1M	24
2H5	–	0,5	4001 007	350	100	1	10 – 1M	96
						2	10 – 1M	24
3H4	0,1	–	4001 001	200	25 – 50	0,1 ... 1	10 – 1M	96
3H5	0,125	–	4001 002	250	25 – 50	0,5/1	10 – 1M	96
3H3	0,050	–	4001 009	200	25 – 50	0,1 ... 1	10 – 1M	96

• coating: green  
• marking: text, see page 128

• other T.C. and tolerances on request  
• all styles available in class B or C