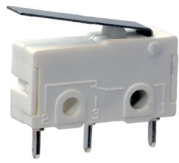


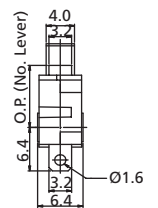
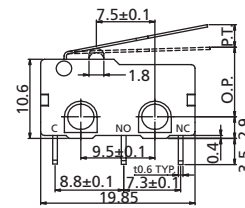
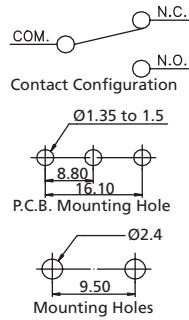
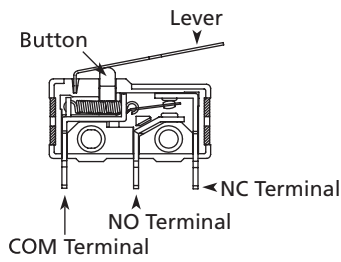
# Micro Switches

## Miniature SPDT Micro Switches

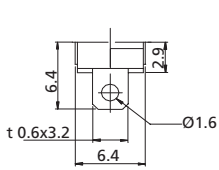
## MP2 Series



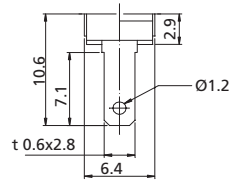
MP2\_H01



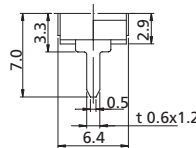
### TERMINAL TYPE



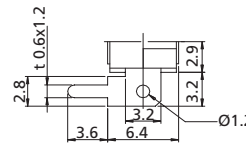
D Solder Terminal



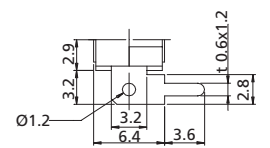
Q Quick Connect



H P.C.B. Terminal Straight

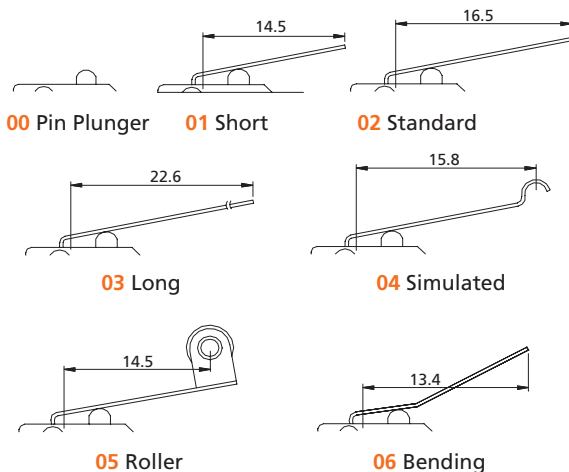


L P.C.B. Terminal Left Angle



R P.C.B. Terminal Right Angle

### HINGED TYPE (LEVER)



### OPERATING FORCE

| Hinged Type | O.P. (mm)  | P.T. max. (mm) | O.T. min. (mm) | M.D. max. (mm) | Operating Force max. (gf) |     |     |     | Release Force min. (gf) |    |    |     |
|-------------|------------|----------------|----------------|----------------|---------------------------|-----|-----|-----|-------------------------|----|----|-----|
|             |            |                |                |                | M                         | L   | N   | H   | M                       | L  | N  | H   |
| 00          | 8.40±0.50  | 0.4            | 0.7            | 0.2            | 50                        | 100 | 150 | 250 | 15                      | 15 | 35 | 140 |
| 01          | 9.15±0.85  | 1.5            | 1.7            | 0.8            | 20                        | 25  | 45  | 80  | 5                       | 5  | 12 | 15  |
| 02          | 9.25±0.95  | 1.8            | 2.3            | 0.8            | 20                        | 20  | 45  | 80  | 5                       | 5  | 12 | 15  |
| 03          | 9.3±1.0    | 2.3            | 3.0            | 0.8            | 15                        | 15  | 40  | 70  | 5                       | 5  | 12 | 15  |
| 04          | 10.3±1.0   | 2.8            | 1.0            | 0.8            | 15                        | 15  | 40  | 70  | 5                       | 5  | 12 | 15  |
| 05          | 14.3±1.0   | 2.5            | 1.5            | 0.8            | 15                        | 15  | 40  | 70  | 5                       | 5  | 12 | 15  |
| 06          | 12.55±1.25 | 2.0            | 1.5            | 0.8            | 15                        | 15  | 40  | 70  | 5                       | 5  | 12 | 15  |

O.P. (Operation Position): The position of the actuator at which the contact snap to the operated contact position  
 F.P. (Free Position): The initial position on the actuator when there is no external force applied  
 P.T. (Pretravel): The distance or angle through which the actuator moves from the F.P. to the O.P.  
 O.T. (Over Travel): The distance or angle of the actuator movement beyond the O.P.  
 R.P. (Releasing Position): The position of the actuator at which the contacts snap from the operated contact position to their normal position  
 M.D. (Movement Differential): The distance or angle from O.P. to R.P.

### How to order:

MP2 1 2 3 4 5

#### 1 CURRENT RATING:

R1 0.1A 48VDC  
 R2 5A 125/250VAC

#### 2 CLOTHED MATERIAL:

AG Silver (Standard)  
 AU Gold

#### 3 TERMINAL

D Solder Lug  
 Q Quick Connect  
 H P.C.B. Terminal Straight  
 L P.C.B. Terminal Left Angle  
 R P.C.B. Terminal Right Angle

#### 4 HINGED TYPE (See above drawings):

00 Pin Plunger  
 01 Short Hinge Lever  
 02 Standard Hinge Lever  
 03 Long Hinge Lever  
 04 Simulated Hinge Lever  
 05 Roller Hinge Lever  
 06 Bending Hinge Lever

#### 5 OPERATING FORCE

M Minimal Force  
 L Lower Force  
 N Standard Force  
 H Higher Force

### General Specifications:

#### FEATURES

- » SPDT Miniature Micro Switch
- » Long Life spring mechanism
- » Large over travel
- » Small compact size

#### MATERIAL

- » Stationary Contact: Silver (5A)  
 Brass copper (0.1A)
- » Movable Contact: Silver alloy
- » Terminals: Brass Copper

#### MECHANICAL

- » Type of Actuation: Momentary
- » Mechanical Life: 300,000 operations min.
- » Operating Temperature: -25°C to +105°C

#### ELECTRICAL

- » Electrical Life: 10,000 operations min.
- » Initial Contact Resistance: 30mΩ max.
- » Insulation Resistance: 100MΩ min.