

*Process sealed—withstands soldering and cleaning processes.



- **ULTRA-MINIATURE LOW PROFILE DESIGN—**
APPROX. .250 IN. (6 mm) SQ
- **SEALED CONSTRUCTION—INTERNAL SILICONE**
RUBBER ACTUATOR SEAL AND INSERT
MOLDED TERMINALS STANDARD
- **PROCESS COMPATIBLE—WITHSTANDS**
SOLDERING AND CLEANING PROCESSES—
HIGH TEMPERATURE MATERIALS (UL 94V-0)
- **TIN-LEAD ALLOY COATS ALL SIDES OF**
TERMINALS FOR JOINT INTEGRITY

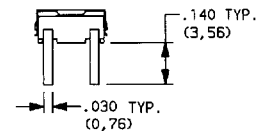
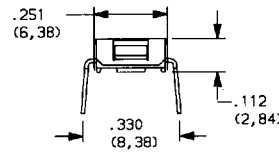
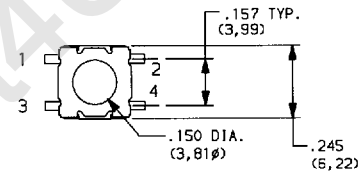
WITH C TERMINALS

PART NO.	ACTUATOR HEIGHT	SWITCH FUNCTION	
		POS. 1	POS. 2
KT11B0CM	FLUSH	OFF	MOM.
KT11B1CM	.025 (0,64)	OFF	MOM.
KT11B2CM	.088 (2,24)	OFF	MOM.
KT11P2CM	.093 (2,36)	OFF	MOM.
KT11P3CM	.044 (1,12)	OFF	MOM.
KT11P4CM	.156 (3,96)	OFF	MOM.
Conn. Terms		OPEN	1,2-3,4
Schematic			
SPST			

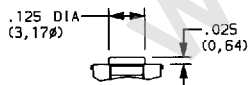
MOM. = MOMENTARY



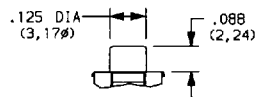
WITH B0
ACTUATOR



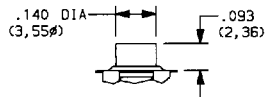
Part No. Shown: KT11B0CM



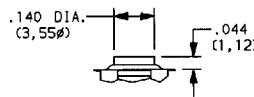
WITH B1 SILICONE
RUBBER ACTUATOR



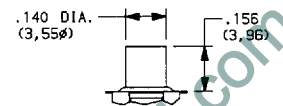
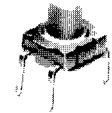
WITH B2 SILICONE
RUBBER ACTUATOR



WITH P2 HARD
PLASTIC ACTUATOR

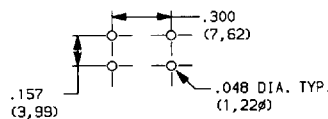


WITH P3 HARD
PLASTIC ACTUATOR



WITH P4 HARD
PLASTIC ACTUATOR

P.C. MOUNTING



HOW TO ORDER

Complete part numbers for KT SERIES SEALED MINIATURE KEY SWITCHES are shown on page D-63. KT Series surface mount models also available—see catalog section A, pages A-17 thru A-19.

SPECIFICATIONS

CONTACT RATING: 1.0 VA max. @ 50 V AC or DC max.
MECHANICAL & ELECTRICAL LIFE: 100,000 make-and-break cycles at full load.
CONTACT RESISTANCE: Below 50 milliohms typ. initial @ 2-4 V DC, 100 mA.
INSULATION RESISTANCE: 10^9 ohms min.
DIELECTRIC STRENGTH: 250 V RMS min. @ sea level.
OPERATING TEMPERATURE: -40°C to 90°C.
SOLDERABILITY: Per MIL-STD-202F method 208D, or EIA RS-186E method 9 (1 hour steam aging).
PACKAGING: Switches supplied in rigid dispensing tubes.

MATERIALS

BASE: LCP (UL 94V-0).
ACTUATOR: B0, B1, B2 actuators: Silicone rubber.
P2, P3, P4 actuators: 4/6 nylon.
SEAL: Silicone rubber.
HOUSING: Stainless steel.
MOVABLE CONTACT: Stainless steel, silver plated.
STATIONARY CONTACTS: Copper alloy, silver plated.
TERMINALS: Copper alloy, with tin-lead alloy over nickel plate. All terminals insert molded.

NOTE: Specifications and materials listed above are general specifications. Specifications available for specific and custom switches, consult factory.

D