

**PLEASE CHECK WWW.MOLEX.COM FOR LATEST PART INFORMATION**

**Part Number:** [0026485021](#)  
**Status:** **Active**  
**Description:** 3.96mm (.156") Pitch KK® Header, Breakaway, Vertical, 2 Circuits, Tin (Sn) Plating, Pin length 20.85mm (.821")

**Documents:**

[Drawing \(PDF\)](#) [RoHS Certificate of Compliance \(PDF\)](#)  
[Product Specification PS-08-50 \(PDF\)](#)

**Agency Certification**

CSA LR19980  
 UL E29179

**General**

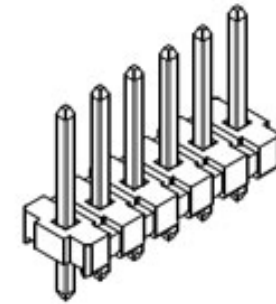
Product Family PCB Headers  
 Series [41661](#)  
 Application Board-to-Board, Wire-to-Board  
 Product Name KK®

**Physical**

Breakaway Yes  
 Circuits (Loaded) 2  
 Circuits (maximum) 2  
 Circuits Detail 2  
 Color - Resin Black  
 Durability (mating cycles max) 25  
 First Mate / Last Break No  
 Flammability 94V-0  
 Glow-Wire Compliant No  
 Guide to Mating Part No  
 Keying to Mating Part None  
 Lock to Mating Part None  
 Material - Metal Brass  
 Material - Plating Mating Gold  
 Material - Plating Termination Gold  
 Material - Resin Polyester  
 Number of Rows 1  
 Orientation Vertical  
 PC Tail Length (in) 0.172 In  
 PC Tail Length (mm) 4.37 mm  
 PCB Locator No  
 PCB Retention None  
 PCB Thickness Recommended (in) 0.062 In  
 PCB Thickness Recommended (mm) 1.57 mm  
 Packaging Type Bag  
 Pitch - Mating Interface (in) 0.156 In  
 Pitch - Mating Interface (mm) 3.96 mm  
 Pitch - Term. Interface (in) 0.156 In  
 Pitch - Term. Interface (mm) 3.96 mm  
 Polarized to Mating Part Yes  
 Polarized to PCB No  
 Temperature Range - Operating -40°C to +105°C  
 Termination Interface: Style IDT or Pierce

**Electrical**

Current - Maximum per Contact 4.5A



*image - Reference only*

*Series*

**EU RoHS**

**ELV and RoHS Compliant**  
**REACH SVHC Contains SVHC: No**  
**Halogen-Free Status**

**China RoHS**



**Not Reviewed**

**Need more information on product environmental compliance?**

Email [productcompliance@molex.com](mailto:productcompliance@molex.com)  
 For a multiple part number RoHS Certificate of Compliance, [click here](#)

Please visit the [Contact Us](#) section for any non-product compliance questions.

**Search Parts in this Series**

[41661Series](#)

**Mates With**

[2139](#) KK® Crimp Housing, [41695](#) KK® Crimp Housing, [6442](#) KK® Crimp Housing, [7674](#) KK® Crimp Housing, [7675](#) KK® IDT Solder Connectors, [2145](#) PCB Connector, [41815](#) PCB Connector

Voltage - Maximum 250V

**Solder Process Data**

Duration at Max. Process Temperature (seconds) 5  
Lead-free Process Capability Wave Capable (TH only)  
Max. Cycles at Max. Process Temperature 1  
Process Temperature max. C 235

**Material Info**

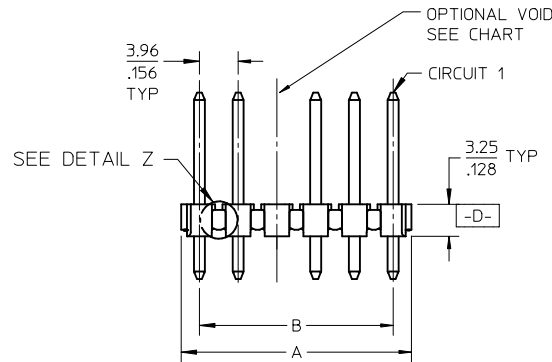
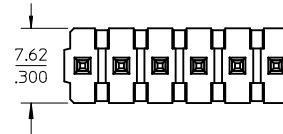
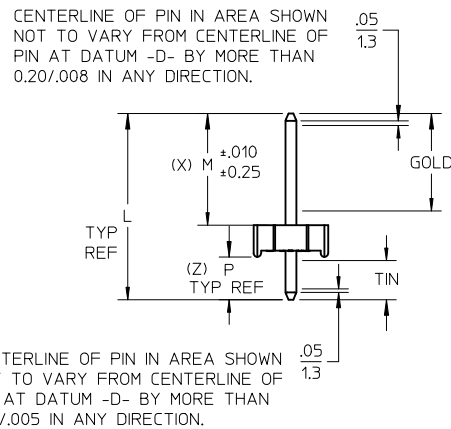
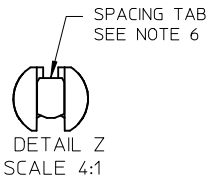
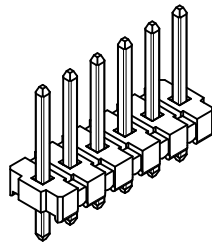
Old Part Number A-41661-A02B501

**Reference - Drawing Numbers**

Product Specification PS-08-50  
Sales Drawing SD-41661-001

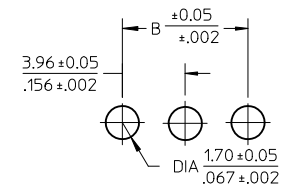
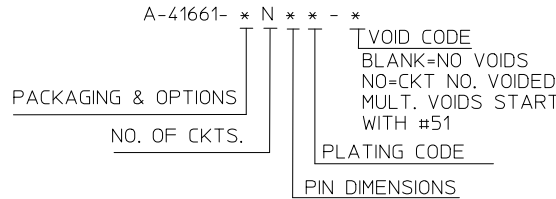
This document was generated on 03/25/2010

**PLEASE CHECK [WWW.MOLEX.COM](http://WWW.MOLEX.COM) FOR LATEST PART INFORMATION**



|  | B          | A                         | CKT SIZE |
|--|------------|---------------------------|----------|
|  | 3.96/156   | 6.78-7.87 / .267-.310     | 2        |
|  | 7.92/312   | 10.74-11.84 / .423-.466   | 3        |
|  | 11.89/468  | 14.71-15.80 / .579-.622   | 4        |
|  | 15.85/624  | 18.67-19.76 / .735-.778   | 5        |
|  | 19.81/780  | 22.63-23.72 / .891-.934   | 6        |
|  | 23.77/936  | 26.59-27.69 / 1.047-1.090 | 7        |
|  | 27.74/1092 | 30.56-31.65 / 1.203-1.246 | 8        |
|  | 31.70/1248 | 34.52-35.61 / 1.359-1.402 | 9        |
|  | 35.66/1404 | 38.48-39.57 / 1.515-1.558 | 10       |
|  | 39.62/1560 | 42.44-43.54 / 1.671-1.714 | 11       |
|  | 43.59/1716 | 46.41-47.50 / 1.827-1.870 | 12       |
|  | 47.55/1872 | 50.37-51.46 / 1.983-2.026 | 13       |
|  | 51.51/2028 | 54.33-55.42 / 2.139-2.182 | 14       |
|  | 55.47/2184 | 58.29-59.39 / 2.295-2.338 | 15       |
|  | 59.44/2340 | 62.26-63.35 / 2.451-2.494 | 16       |
|  | 63.40/2496 | 66.22-67.31 / 2.607-2.650 | 17       |
|  | 67.36/2652 | 70.18-71.27 / 2.763-2.806 | 18       |
|  | 71.32/2808 | 74.14-75.23 / 2.919-2.962 | 19       |
|  | 75.29/2964 | 78.11-79.20 / 3.075-3.118 | 20       |
|  | 79.25/3120 | 82.07-83.16 / 3.231-3.274 | 21       |
|  | 83.21/3276 | 86.03-87.12 / 3.387-3.430 | 22       |
|  | 87.17/3432 | 89.94-91.08 / 3.541-3.586 | 23       |
|  | 91.14/3588 | 93.85-95.00 / 3.695-3.740 | 24       |

- NOTES:
- MATERIAL: HEADER: GLASS FILLED POLYESTER, 94V-0, MOLDED BLACK.
  - FINISH:
    - (102) OVERALL TIN: 0.00508/0.00200 MIN OVER COPPER
    - (222) OVERALL MATTE TIN: 0.00254/0.00100 MIN OVER 0.00127/0.00050 MIN NICKEL
    - (208) SELECT GOLD: 0.00038/0.00015 MIN, SELECT TIN: 0.00254/0.00100 MIN, OVERALL NICKEL UNDERPLATE: 0.00127/0.00050 MIN.
    - (228) SELECT GOLD: 0.00076/0.00030 MIN, SELECT TIN: 0.00254/0.00100 MIN, OVERALL NICKEL UNDERPLATE: 0.00127/0.00050 MIN.
    - (501) OVERALL GOLD: 0.00051/0.00020 MIN OVER 0.00076/0.00030 MIN NICKEL
  - THIS PART CONFORMS TO PRODUCT SPEC PS-08-50.
  - PACKAGING: SEE CHARTS.
  - SOLDERABILITY: SEE SMES 152.
  - PARTS ARE STACKABLE END TO END ON 3.96/156 CENTERS. (SPACING TABS MUST BE REMOVED ON CIRCUIT SIZES 2 THRU 23 BEFORE PARTS ARE STACKABLE.)
  - THIS PART CONFORMS TO CLASS B REQUIREMENTS OF COSMETIC SPECIFICATION PS-45499-002.
  - PIN PUSH-OUT FORCE: PRIOR TO SOLDERING, A 3 LB MINIMUM FORCE (IN EITHER DIRECTION) SHALL BE REQUIRED TO PUSH THE PIN OUT OF THE HEADER.



PCB LAYOUT: COMPONENT SIDE  
RECOMMENDED PCB THICKNESS:  
1.57 ± .18 / .062 ± .007

| DRAWING FORMAT | SHEETS | REV LEVEL |
|----------------|--------|-----------|
| GENERAL DOCS.  | 2-*    | BD1       |
| ANNOTATOR      | 1      |           |

|  |  |   |                      |  |                                    |                        |
|--|--|---|----------------------|--|------------------------------------|------------------------|
| ADD 41661-0642<br>EC NO: UCP2010-1384<br>DRW/CHK/PPR 2010/02/03<br>CHKD:SSOUSEK 2010/02/09<br>APPR:FSMLTH 2010/02/10<br>REV<br>BD1 | QUALITY SYMBOLS                                      | GENERAL TOLERANCES (UNLESS SPECIFIED)   | DIMENSION STYLE      | SCALE  | DESIGN UNITS                       | THIRD ANGLE PROJECTION |
|  | ▽=0  | mm INCH   | MM/IN                | 2:1  | INCH                               |                        |
|  | ▽=0  | 4 PLACES ± --- ± ---  | DRAWN BY DATE        | DRAWN BY DATE  | INCH                               | THIRD ANGLE PROJECTION |
|  | ▽=0  | 3 PLACES ± --- ± .010   | JSCHAFFER 2004/03/04 |  |                                    |                        |
|  | 2 PLACES ± 0.25 ± .014                               | CHECKED BY DATE   | MARGULIS 2004/03/04  | 2:1  | INCH                               | THIRD ANGLE PROJECTION |
|  | 1 PLACE ± 0.36 ± ---                                 | APPROVED BY DATE  |                      |  |                                    |                        |
|  | ANGULAR ± 1/2°                                       | MATERIAL NO.  | SEE CHART            | KK .156 HEADER ASSEMBLY<br>FLAT BREAKAWAY<br>2-24 CKTS |                                    |                        |
|  | DRAFT WHERE APPLICABLE MUST REMAIN WITHIN DIMENSIONS | THIS DRAWING CONTAINS INFORMATION THAT IS PROPRIETARY TO MOLEX INCORPORATED AND SHOULD NOT BE USED WITHOUT WRITTEN PERMISSION | SIZE B               | DOCUMENT NO.   | MOLEX INCORPORATED<br>SD-41661-001 |                        |
|  |  |   |                      |  | SHEET NO.<br>1 OF *                |                        |

|                  |              |       |                  |             |       |                  |             |              |                  |             |            |              |  |  |
|------------------|--------------|-------|------------------|-------------|-------|------------------|-------------|--------------|------------------|-------------|------------|--------------|--|--|
| PIN NUMBER       | 2161-1(102)  |       | PIN NUMBER       | CONTINUED   |       |                  | PIN NUMBER  | 43294-0236   |                  |             | PIN NUMBER | 43294-0237   |  |  |
| PIN LENGTH       | 19.0/.750    |       | PIN LENGTH       |             |       |                  | PIN LENGTH  | 19.0/.750    |                  |             | PIN LENGTH | 19.0/.750    |  |  |
| PLATING          | 102          |       | PLATING          | FROM        |       |                  | PLATING     | 208          |                  |             | PLATING    | 228          |  |  |
| MATING "M"       | 11.43/.450   |       | MATING "M"       |             |       |                  | MATING "M"  | 11.43/.450   |                  |             | MATING "M" | 11.43/.450   |  |  |
| PCB "P"          | 4.37/.172    |       | PCB "P"          | LAST        |       |                  | PCB "P"     | 4.37/.172    |                  |             | PCB "P"    | 4.37/.172    |  |  |
| GOLD "G"         | N/A          |       | GOLD "G"         |             |       |                  | GOLD "G"    | 6.86 / .270  |                  |             | GOLD "G"   | 6.86/.270    |  |  |
| TIN "T"          | OVERALL      |       | TIN "T"          | COLUMN      |       |                  | TIN "T"     | 4.06/.160    |                  |             | TIN "T"    | 4.06/.160    |  |  |
| PACKAGING        | PK-41661-001 |       | PACKAGING        |             |       |                  | PACKAGING   | PK-41661-001 |                  |             | PACKAGING  | PK-41661-001 |  |  |
| STATUS           |              |       | STATUS           |             |       |                  | STATUS      |              |                  |             | STATUS     |              |  |  |
| A-41661-ANA102-* |              |       | A-41661-ANA102-* |             |       | A-41661-BNA208-* |             |              | A-41661-BNA228-* |             |            |              |  |  |
| MATERIAL         | ENGINEERING  | VOIDS | MATERIAL         | ENGINEERING | VOIDS | MATERIAL         | ENGINEERING | VOIDS        | MATERIAL         | ENGINEERING | VOIDS      |              |  |  |
| 26-48-1021       | -A2A102      |       | 26-50-3092       | -A9A102-7   | 7     | 41661-0001       | -B02A208    |              | 41661-0024       | -B02A228    |            |              |  |  |
| 26-48-1031       | -A3A102      |       | 26-50-3201       | -A20A102-3  | 3     | 41661-0002       | -B03A208    |              | 41661-0025       | -B03A228    |            |              |  |  |
| 26-48-1041       | -A4A102      |       | 26-50-3164       | -A16A102-52 | 2, 15 | 41661-0003       | -B04A208    |              | 41661-0026       | -B04A228    |            |              |  |  |
| 26-48-1051       | -A5A102      |       | 41661-2004       | -A6A102-4   | 4     | 41661-0004       | -B05A208    |              | 41661-0027       | -B05A228    |            |              |  |  |
| 26-48-1061       | -A6A102      |       | 41661-2005       | -A4A102-51  | 2,3   | 41661-0005       | -B06A208    |              | 41661-0028       | -B06A228    |            |              |  |  |
| 26-48-1071       | -A7A102      |       | 41661-2006       | -A5A102-3   | 3     | 41661-0006       | -B07A208    |              | 41661-0029       | -B07A228    |            |              |  |  |
| 26-48-1081       | -A8A102      |       | 26-50-3039       | -A3A102-2   | 2     | 41661-0007       | -B08A208    |              | 41661-0030       | -B08A228    |            |              |  |  |
| 26-48-1091       | -A9A102      |       | 26-50-3049       | -A4A102-2   | 2     | 41661-0008       | -B09A208    |              | 41661-0031       | -B09A228    |            |              |  |  |
| 26-48-1101       | -A10A102     |       | 26-50-3059       | -A5A102-2   | 2     | 41661-0009       | -B10A208    |              | 41661-0032       | -B10A228    |            |              |  |  |
| 26-48-1111       | -A11A102     |       | 26-50-3069       | -A6A102-2   | 2     | 41661-0010       | -B11A208    |              | 41661-0033       | -B11A228    |            |              |  |  |
| 26-48-1121       | -A12A102     |       | 26-50-3074       | -A7A102-2   | 2     | 41661-0011       | -B12A208    |              | 41661-0034       | -B12A228    |            |              |  |  |
| 26-48-1131       | -A13A102     |       | 26-50-3089       | -A8A102-2   | 2     | 41661-0012       | -B13A208    |              | 41661-0035       | -B13A228    |            |              |  |  |
| 26-48-1141       | -A14A102     |       | 26-50-3099       | -A9A102-2   | 2     | 41661-0013       | -B14A208    |              | 41661-0036       | -B14A228    |            |              |  |  |
| 26-48-1151       | -A15A102     |       | 26-50-3104       | -A10A102-2  | 2     | 41661-0014       | -B15A208    |              | 41661-0037       | -B15A228    |            |              |  |  |
| 26-48-1161       | -A16A102     |       | 26-50-3119       | -A11A102-2  | 2     | 41661-0015       | -B16A208    |              | 41661-0038       | -B16A228    |            |              |  |  |
| 26-48-1171       | -A17A102     |       | 26-50-3129       | -A12A102-2  | 2     | 41661-0016       | -B17A208    |              | 41661-0039       | -B17A228    |            |              |  |  |
| 26-48-1181       | -A18A102     |       | 26-50-3139       | -A13A102-2  | 2     | 41661-0017       | -B18A208    |              | 41661-0040       | -B18A228    |            |              |  |  |
| 26-48-1191       | -A19A102     |       | 26-50-3149       | -A14A102-2  | 2     | 41661-0018       | -B19A208    |              | 41661-0041       | -B19A228    |            |              |  |  |
| 26-48-1201       | -A20A102     |       | 26-50-3159       | -A15A102-2  | 2     | 41661-0019       | -B20A208    |              | 41661-0042       | -B20A228    |            |              |  |  |
| 26-48-1211       | -A21A102     |       | 26-50-3169       | -A16A102-2  | 2     | 41661-0020       | -B21A208    |              | 41661-0043       | -B21A228    |            |              |  |  |
| 26-48-1221       | -A22A102     |       | 26-50-3179       | -A17A102-2  | 2     | 41661-0021       | -B22A208    |              | 41661-0044       | -B22A228    |            |              |  |  |
| 26-48-1231       | -A23A102     |       | 26-50-3189       | -A18A102-2  | 2     | 41661-0022       | -B23A208    |              | 41661-0045       | -B23A228    |            |              |  |  |
| 26-48-1241       | -A24A102     |       | 26-50-3199       | -A19A102-2  | 2     | 41661-0023       | -B24A208    |              | 41661-0046       | -B24A228    |            |              |  |  |
| 26-48-1178       | -A17A102-3   | 3     | 26-50-3209       | -A20A102-2  | 2     |                  |             |              |                  |             |            |              |  |  |
| 26-48-1138       | -A13A102-3   | 3     | 50-29-1687       | -A07A102-4  | 4     |                  |             |              |                  |             |            |              |  |  |
| 26-50-3105       | -A10A102-4   | 4     | 50-29-1612       | -A15A102-7  | 7     |                  |             |              |                  |             |            |              |  |  |

|   |   |  |                               |
|---|---|--|-------------------------------|
| REV:<br><b>BD1</b>                        | ECR/ECN INFORMATION:<br>EC No.: <b>UCP2010-1384</b><br>DATE: <b>2/10/2010</b> | TITLE:<br><b>KK 156 HEADER ASSEMBLY<br/>FLAT BREAKAWAY<br/>2-24 CKTS</b> | SHEET No.<br><b>- 2 -</b>     |
| DOCUMENT NUMBER:<br><b>SD- 41661 -001</b> |   | CREATED / REVISED BY:<br><b>MKIPPER</b>                                  | CHECKED BY:<br><b>SSOUSEK</b> |
|   |   | APPROVED BY:<br><b>FSMITH</b>  |                               |

| A-41661-ANAE102-* |             |       | A-41661-ANC102-* |             |       | A-41661-AND501-* |             |       | A-41661-ANE102-* |             |       |
|-------------------|-------------|-------|------------------|-------------|-------|------------------|-------------|-------|------------------|-------------|-------|
| MATERIAL          | ENGINEERING | VOIDS | MATERIAL         | ENGINEERING | VOIDS | MATERIAL         | ENGINEERING | VOIDS | MATERIAL         | ENGINEERING | VOIDS |
| 26-48-1020        | -A2AE102    |       | 26-48-7021       | -A2C102     |       | 26-48-5023       | -A2D501     |       | 26-58-4020       | -A2E102     |       |
| 26-48-1030        | -A3AE102    |       | 26-48-7031       | -A3C102     |       | 41661-0093       | -A3D501     |       | 26-58-4030       | -A3E102     |       |
| 26-48-1040        | -A4AE102    |       | 26-48-7041       | -A4C102     |       | 41661-0094       | -A4D501     |       | 26-58-4040       | -A4E102     |       |
| 26-48-1050        | -A5AE102    |       | 26-48-7051       | -A5C102     |       | 41661-0095       | -A5D501     |       | 26-58-4050       | -A5E102     |       |
| 26-48-1060        | -A6AE102    |       | 26-48-7061       | -A6C102     |       | 41661-0096       | -A6D501     |       | 26-58-4060       | -A6E102     |       |
| 26-48-1070        | -A7AE102    |       | 26-48-7071       | -A7C102     |       | 41661-0097       | -A7D501     |       | 26-58-4070       | -A7E102     |       |
| 26-48-1080        | -A8AE102    |       | 26-48-7081       | -A8C102     |       | 26-48-5083       | -A8D501     |       | 26-58-4080       | -A8E102     |       |
| 26-48-1090        | -A9AE102    |       | 26-48-7091       | -A9C102     |       | 41661-0098       | -A9D501     |       | 26-58-4090       | -A9E102     |       |
| 26-48-1100        | -A10AE102   |       | 26-48-7101       | -A10C102    |       | 41661-0099       | -A10D501    |       | 26-58-4100       | -A10E102    |       |
| 26-48-1110        | -A11AE102   |       | 26-48-7111       | -A11C102    |       | 41661-0100       | -A11D501    |       | 26-58-4110       | -A11E102    |       |
| 26-48-1120        | -A12AE102   |       | 26-48-7121       | -A12C102    |       | 26-48-5123       | -A12D501    |       | 26-58-4120       | -A12E102    |       |
| 26-48-1130        | -A13AE102   |       | 26-48-7131       | -A13C102    |       | 41661-0101       | -A13D501    |       | 26-58-4130       | -A13E102    |       |
| 26-48-1140        | -A14AE102   |       | 26-48-7141       | -A14C102    |       | 41661-0102       | -A14D501    |       | 26-58-4140       | -A14E102    |       |
| 26-48-1150        | -A15AE102   |       | 26-48-7151       | -A15C102    |       | 41661-0103       | -A15D501    |       | 26-58-4150       | -A15E102    |       |
| 26-48-1160        | -A16AE102   |       | 26-48-7161       | -A16C102    |       | 41661-0104       | -A16D501    |       | 26-58-4160       | -A16E102    |       |
| 26-48-1170        | -A17AE102   |       | 26-48-7171       | -A17C102    |       | 41661-0105       | -A17D501    |       | 26-58-4170       | -A17E102    |       |
| 26-48-1180        | -A18AE102   |       | 26-48-7181       | -A18C102    |       | 41661-0106       | -A18D501    |       | 26-58-4180       | -A18E102    |       |
| 26-48-1190        | -A19AE102   |       | 26-48-7191       | -A19C102    |       | 41661-0107       | -A19D501    |       | 26-58-4190       | -A19E102    |       |
| 26-48-1200        | -A20AE102   |       | 26-48-7201       | -A20C102    |       | 41661-0108       | -A20D501    |       | 26-58-4200       | -A20E102    |       |
| 26-48-1210        | -A21AE102   |       | 26-48-7211       | -A21C102    |       | 41661-0109       | -A21D501    |       | 26-58-4210       | -A21E102    |       |
| 26-48-1220        | -A22AE102   |       | 26-48-7221       | -A22C102    |       | 41661-0110       | -A22D501    |       | 26-58-4220       | -A22E102    |       |
| 26-48-1230        | -A23AE102   |       | 26-48-7231       | -A23C102    |       | 41661-0111       | -A23D501    |       | 26-58-4230       | -A23E102    |       |
| 26-48-1240        | -A24AE102   |       | 26-48-7241       | -A24C102    |       | 41661-0112       | -A24D501    |       | 26-58-4240       | -A24E102    |       |

|   |   |  |                               |
|---|---|--|-------------------------------|
| REV:<br><b>BD1</b>                        | ECR/ECN INFORMATION:<br>EC No.: <b>UCP2010-1384</b><br>DATE: <b>2/10/2010</b> | TITLE:<br><b>KK 156 HEADER ASSEMBLY<br/>FLAT BREAKAWAY<br/>2-24 CKTS</b> | SHEET No.<br><b>- 3 -</b>     |
| DOCUMENT NUMBER:<br><b>SD- 41661 -001</b> |   | CREATED / REVISED BY:<br><b>MKIPPER</b>                                  | CHECKED BY:<br><b>SSOUSEK</b> |
|   |   | APPROVED BY:<br><b>FSMITH</b>  |                               |

|                  |              |            |                  |             |              |                  |              |       |                  |             |       |
|------------------|--------------|------------|------------------|-------------|--------------|------------------|--------------|-------|------------------|-------------|-------|
| PIN NUMBER       | 2161-21(102) | PIN NUMBER | 2161-36(501)     | PIN NUMBER  | 2161-95(102) | PIN NUMBER       | 2161-7(102)  |       |                  |             |       |
| PIN LENGTH       | 28.58/1.125  | PIN LENGTH | 30.48/1.200      | PIN LENGTH  | 37.24/1.468  | PIN LENGTH       | 34.67/1.562  |       |                  |             |       |
| PLATING          | 102          | PLATING    | 501              | PLATING     | 102          | PLATING          | 102          |       |                  |             |       |
| MATING "M"       | 20.96/.825   | MATING "M" | 24.21/.953       | MATING "M"  | 13.97/.550   | MATING "M"       | 33.40/1.315  |       |                  |             |       |
| PCB "P"          | 4.37/.172    | PCB "P"    | 3.02/.119        | PCB "P"     | 20.07/.790   | PCB "P"          | 3.10/.122    |       |                  |             |       |
| GOLD "G"         | N/A          | GOLD "G"   | OVERALL          | GOLD "G"    | N/A          | GOLD "G"         | N/A          |       |                  |             |       |
| TIN "T"          | OVERALL      | TIN "T"    | N/A              | TIN "T"     | OVERALL      | TIN "T"          | OVERALL      |       |                  |             |       |
| PACKAGING        | PK-41661-001 | PACKAGING  | PK-41661-001     | PACKAGING   | PK-41661-001 | PACKAGING        | PK-41661-001 |       |                  |             |       |
| STATUS           |              | STATUS     |                  | STATUS      |              | STATUS           |              |       |                  |             |       |
| A-41661-ANF102-* |              |            | A-41661-ANE501-* |             |              | A-41661-ANH102-* |              |       | A-41661-ANL102-* |             |       |
| MATERIAL         | ENGINEERING  | VOIDS      | MATERIAL         | ENGINEERING | VOIDS        | MATERIAL         | ENGINEERING  | VOIDS | MATERIAL         | ENGINEERING | VOIDS |
| 26-48-4021       | -A2F102      |            | 41661-0127       | -A2E501     |              | 41661-0146       | -A2H102      |       | 26-48-9021       | -A2L102     |       |
| 26-48-4031       | -A3F102      |            | 41661-0128       | -A3E501     |              | 41661-0147       | -A3H102      |       | 26-48-9031       | -A3L102     |       |
| 26-48-4041       | -A4F102      |            | 41661-0129       | -A4E501     |              | 41661-0148       | -A4H102      |       | 41661-0167       | -A4L102     |       |
| 41661-0113       | -A5F102      |            | 41661-0130       | -A5E501     |              | 41661-0149       | -A5H102      |       | 26-48-9051       | -A5L102     |       |
| 26-48-4061       | -A6F102      |            | 41661-0131       | -A6E501     |              | 26-48-8061       | -A6H102      |       | 26-48-9061       | -A6L102     |       |
| 41661-0114       | -A7F102      |            | 41661-0132       | -A7E501     |              | 41661-0150       | -A7H102      |       | 26-48-9071       | -A7L102     |       |
| 26-48-4081       | -A8F102      |            | 26-48-3081       | -A8E501     |              | 41661-0151       | -A8H102      |       | 41661-0168       | -A8L102     |       |
| 41661-0115       | -A9F102      |            | 41661-0133       | -A9E501     |              | 41661-0152       | -A9H102      |       | 41661-0169       | -A9L102     |       |
| 26-48-4101       | -A10F102     |            | 41661-0134       | -A10E501    |              | 41661-0153       | -A10H102     |       | 41661-0170       | -A10L102    |       |
| 26-48-4111       | -A11F102     |            | 41661-0135       | -A11E501    |              | 41661-0154       | -A11H102     |       | 41661-0171       | -A11L102    |       |
| 41661-0116       | -A12F102     |            | 26-48-3121       | -A12E501    |              | 41661-0155       | -A12H102     |       | 41661-0172       | -A12L102    |       |
| 41661-0117       | -A13F102     |            | 26-48-3131       | -A13E501    |              | 26-48-8131       | -A13H102     |       | 41661-0173       | -A13L102    |       |
| 41661-0118       | -A14F102     |            | 41661-0136       | -A14E501    |              | 41661-0156       | -A14H102     |       | 41661-0174       | -A14L102    |       |
| 26-48-4151       | -A15F102     |            | 41661-0137       | -A15E501    |              | 41661-0157       | -A15H102     |       | 41661-0175       | -A15L102    |       |
| 41661-0119       | -A16F102     |            | 41661-0138       | -A16E501    |              | 41661-0158       | -A16H102     |       | 41661-0176       | -A16L102    |       |
| 41661-0120       | -A17F102     |            | 41661-0139       | -A17E501    |              | 41661-0159       | -A17H102     |       | 41661-0177       | -A17L102    |       |
| 41661-0121       | -A18F102     |            | 41661-0140       | -A18E501    |              | 41661-0160       | -A18H102     |       | 41661-0178       | -A18L102    |       |
| 41661-0122       | -A19F102     |            | 41661-0141       | -A19E501    |              | 41661-0161       | -A19H102     |       | 41661-0179       | -A19L102    |       |
| 41661-0123       | -A20F102     |            | 41661-0142       | -A20E501    |              | 41661-0162       | -A20H102     |       | 41661-0180       | -A20L102    |       |
| 41661-0124       | -A21F102     |            | 41661-0143       | -A21E501    |              | 41661-0163       | -A21H102     |       | 41661-0181       | -A21L102    |       |
| 41661-0125       | -A22F102     |            | 41661-0144       | -A22E501    |              | 41661-0164       | -A22H102     |       | 41661-0182       | -A22L102    |       |
| 41661-0126       | -A23F102     |            | 41661-0145       | -A23E501    |              | 41661-0165       | -A23H102     |       | 41661-0183       | -A23L102    |       |
| 26-48-4241       | -A24F102     |            | 26-48-3241       | -A24E501    |              | 41661-0166       | -A24H102     |       | 26-48-9241       | -A24L102    |       |

|   |   |  |                               |
|---|---|--|-------------------------------|
| REV:<br><b>BD1</b>                        | ECR/ECN INFORMATION:<br>EC No.: <b>UCP2010-1384</b><br>DATE: <b>2/10/2010</b> | TITLE:<br><b>KK 156 HEADER ASSEMBLY<br/>FLAT BREAKAWAY<br/>2-24 CKTS</b> | SHEET No.<br><b>- 4 -</b>     |
| DOCUMENT NUMBER:<br><b>SD- 41661 -001</b> |   | CREATED / REVISED BY:<br><b>MKIPPER</b>                                  | CHECKED BY:<br><b>SSOUSEK</b> |
|   |   | APPROVED BY:<br><b>FSMITH</b>  |                               |

|                  |              |            |                  |             |              |                  |              |       |                |             |       |
|------------------|--------------|------------|------------------|-------------|--------------|------------------|--------------|-------|----------------|-------------|-------|
| PIN NUMBER       | 2161-36(102) | PIN NUMBER | 2161-7(102)      | PIN NUMBER  | 2161-36(102) | PIN NUMBER       | 2161-3(501)  |       |                |             |       |
| PIN LENGTH       | 30.48/1.200  | PIN LENGTH | 39.67/1.562      | PIN LENGTH  | 30.48/1.200  | PIN LENGTH       | 23.80/937    |       |                |             |       |
| PLATING          | 102          | PLATING    | 102              | PLATING     | 102          | PLATING          | 501          |       |                |             |       |
| MATING "M"       | 22.61/.890   | MATING "M" | 32.61/1.284      | MATING "M"  | 13.44/.531   | MATING "M"       | 16.18/.637   |       |                |             |       |
| PCB "P"          | 4.62/.182    | PCB "P"    | 3.81/.150        | PCB "P"     | 13.74/.541   | PCB "P"          | 4.37/.172    |       |                |             |       |
| GOLD "G"         | N/A          | GOLD "G"   | N/A              | GOLD "G"    | N/A          | GOLD "G"         | OVERALL      |       |                |             |       |
| TIN "T"          | OVERALL      | TIN "T"    | OVERALL          | TIN "T"     | OVERALL      | TIN "T"          | N/A          |       |                |             |       |
| PACKAGING        | PK-41661-001 | PACKAGING  | PK-41661-001     | PACKAGING   | PK-41661-001 | PACKAGING        | PK-41661-001 |       |                |             |       |
| STATUS           |              | STATUS     |                  | STATUS      |              | STATUS           |              |       |                |             |       |
| A-41661-ANM102-* |              |            | A-41661-ANN102-* |             |              | A-41661-ANR102-* |              |       | 41661-ANC501-* |             |       |
| MATERIAL         | ENGINEERING  | VOIDS      | MATERIAL         | ENGINEERING | VOIDS        | MATERIAL         | ENGINEERING  | VOIDS | MATERIAL       | ENGINEERING | VOIDS |
| 26-58-4022       | -A2M102      |            | 41661-0200       | -A2N102     |              | 26-48-4022       | -A2R102      |       | 41661-0219     | -A2C501     |       |
| 41661-0184       | -A3M102      |            | 41661-0201       | -A3N102     |              | 26-48-4032       | -A3R102      |       | 41661-0220     | -A3C501     |       |
| 26-58-4042       | -A4M102      |            | 41661-0202       | -A4N102     |              | 26-48-4042       | -A4R102      |       | 41661-0221     | -A4C501     |       |
| 26-58-4052       | -A5M102      |            | 41661-0203       | -A5N102     |              | 26-48-4052       | -A5R102      |       | 41661-0222     | -A5C501     |       |
| 41661-0186       | -A6M102      |            | 26-58-0062       | -A6N102     |              | 26-48-4062       | -A6R102      |       | 26-48-5064     | -A6C501     |       |
| 26-58-4072       | -A7M102      |            | 41661-0204       | -A7N102     |              | 26-48-4072       | -A7R102      |       | 41661-0223     | -A7C501     |       |
| 41661-0187       | -A8M102      |            | 41661-0205       | -A8N102     |              | 26-48-4082       | -A8R102      |       | 41661-0224     | -A8C501     |       |
| 26-58-4092       | -A9M102      |            | 26-58-0092       | -A9N102     |              | 26-48-4092       | -A9R102      |       | 41661-0225     | -A9C501     |       |
| 26-58-4102       | -A10M102     |            | 26-58-0102       | -A10N102    |              | 26-48-4102       | -A10R102     |       | 26-48-5104     | -A10C501    |       |
| 41661-0188       | -A11M102     |            | 41661-0206       | -A11N102    |              | 26-48-4112       | -A11R102     |       | 41661-0226     | -A11C501    |       |
| 26-58-4122       | -A12M102     |            | 41661-0207       | -A12N102    |              | 26-48-4122       | -A12R102     |       | 41661-0227     | -A12C501    |       |
| 41661-0189       | -A13M102     |            | 41661-0208       | -A13N102    |              | 26-48-4132       | -A13R102     |       | 41661-0228     | -A13C501    |       |
| 41661-0190       | -A14M102     |            | 41661-0209       | -A14N102    |              | 26-48-4142       | -A14R102     |       | 41661-0229     | -A14C501    |       |
| 26-58-4152       | -A15M102     |            | 41661-0210       | -A15N102    |              | 26-48-4152       | -A15R102     |       | 41661-0230     | -A15C501    |       |
| 26-58-4162       | -A16M102     |            | 41661-0211       | -A16N102    |              | 26-48-4162       | -A16R102     |       | 41661-0231     | -A16C501    |       |
| 41661-0192       | -A17M102     |            | 41661-0212       | -A17N102    |              | 26-48-4172       | -A17R102     |       | 41661-0232     | -A17C501    |       |
| 41661-0193       | -A18M102     |            | 41661-0213       | -A18N102    |              | 26-48-4182       | -A18R102     |       | 41661-0233     | -A18C501    |       |
| 41661-0194       | -A19M102     |            | 41661-0214       | -A19N102    |              | 26-48-4192       | -A19R102     |       | 41661-0234     | -A19C501    |       |
| 41661-0195       | -A20M102     |            | 41661-0215       | -A20N102    |              | 26-48-4202       | -A20R102     |       | 41661-0235     | -A20C501    |       |
| 41661-0196       | -A21M102     |            | 41661-0216       | -A21N102    |              | 26-48-4212       | -A21R102     |       | 41661-0236     | -A21C501    |       |
| 41661-0197       | -A22M102     |            | 41661-0217       | -A22N102    |              | 26-48-4222       | -A22R102     |       | 41661-0237     | -A22C501    |       |
| 41661-0198       | -A23M102     |            | 41661-0218       | -A23N102    |              | 26-48-4232       | -A23R102     |       | 41661-0238     | -A23C501    |       |
| 41661-0199       | -A24M102     |            | 26-58-0242       | -A24N102    |              | 26-48-4242       | -A24R102     |       | 26-48-5244     | -A24C501    |       |
|                  |              |            |                  |             |              | 26-50-4055       | -A5R102-4    | 4     |                |             |       |
|                  |              |            |                  |             |              |                  |              |       |                |             |       |
|                  |              |            |                  |             |              |                  |              |       |                |             |       |

|   |   |  |                               |
|---|---|--|-------------------------------|
| REV:<br><b>BD1</b>                        | ECR/ECN INFORMATION:<br>EC No.: <b>UCP2010-1384</b><br>DATE: <b>2/10/2010</b> | TITLE:<br><b>KK 156 HEADER ASSEMBLY<br/>FLAT BREAKAWAY<br/>2-24 CKTS</b> | SHEET No.<br><b>- 5 -</b>     |
| DOCUMENT NUMBER:<br><b>SD- 41661 -001</b> | CREATED / REVISED BY:<br><b>MKIPPER</b>                                       | CHECKED BY:<br><b>SSOUSEK</b>  | APPROVED BY:<br><b>FSMITH</b> |

|                  |              |            |                  |             |              |                  |              |       |                   |             |       |
|------------------|--------------|------------|------------------|-------------|--------------|------------------|--------------|-------|-------------------|-------------|-------|
| PIN NUMBER       | 2161-22(102) | PIN NUMBER | 2161-19(102)     | PIN NUMBER  | 2161-22(102) | PIN NUMBER       | 2161-38(102) |       |                   |             |       |
| PIN LENGTH       | 31.75/1.250  | PIN LENGTH | 26.21/1.032      | PIN LENGTH  | 31.75/1.250  | PIN LENGTH       | 38.10/1.500  |       |                   |             |       |
| PLATING          | 102          | PLATING    | 102              | PLATING     | 102          | PLATING          | 102          |       |                   |             |       |
| MATING "M"       | 25.70/1.012  | MATING "M" | 19.48/.767       | MATING "M"  | 18.34/.722   | MATING "M"       | 31.80/1.252  |       |                   |             |       |
| PCB "P"          | 2.79/.110    | PCB "P"    | 3.56/.140        | PCB "P"     | 10.16/.400   | PCB "P"          | 3.05/.120    |       |                   |             |       |
| GOLD "G"         | N/A          | GOLD "G"   | N/A              | GOLD "G"    | N/A          | GOLD "G"         | N/A          |       |                   |             |       |
| TIN "T"          | OVERALL      | TIN "T"    | OVERALL          | TIN "T"     | OVERALL      | TIN "T"          | OVERALL      |       |                   |             |       |
| PACKAGING        | PK-41661-001 | PACKAGING  | PK-41661-001     | PACKAGING   | PK-41661-001 | PACKAGING        | PK-41661-001 |       |                   |             |       |
| STATUS           |              | STATUS     |                  | STATUS      |              | STATUS           |              |       |                   |             |       |
| A-41661-ANW102-* |              |            | A-41661-ANY102-* |             |              | A-41661-ANZ102-* |              |       | A-41661-ANAA102-* |             |       |
| MATERIAL         | ENGINEERING  | VOIDS      | MATERIAL         | ENGINEERING | VOIDS        | MATERIAL         | ENGINEERING  | VOIDS | MATERIAL          | ENGINEERING | VOIDS |
| 41661-0239       | -A2W102      |            | 41661-0259       | -A2Y102     |              | 41661-0274       | -A2Z102      |       | 41661-0294        | -A2AA102    |       |
| 41661-0240       | -A3W102      |            | 26-58-0030       | -A3Y102     |              | 41661-0275       | -A3Z102      |       | 41661-0295        | -A3AA102    |       |
| 26-58-0045       | -A4W102      |            | 26-58-0040       | -A4Y102     |              | 41661-0276       | -A4Z102      |       | 41661-0296        | -A4AA102    |       |
| 41661-0241       | -A5W102      |            | 41661-0260       | -A5Y102     |              | 41661-0277       | -A5Z102      |       | 41661-0297        | -A5AA102    |       |
| 41661-0242       | -A6W102      |            | 26-58-0060       | -A6Y102     |              | 26-58-0061       | -A6Z102      |       | 41661-0298        | -A6AA102    |       |
| 41661-0243       | -A7W102      |            | 26-58-0070       | -A7Y102     |              | 41661-0278       | -A7Z102      |       | 41661-0299        | -A7AA102    |       |
| 41661-0244       | -A8W102      |            | 41661-0261       | -A8Y102     |              | 41661-0279       | -A8Z102      |       | 26-58-0083        | -A8AA102    |       |
| 41661-0245       | -A9W102      |            | 26-58-0090       | -A9Y102     |              | 41661-0280       | -A9Z102      |       | 41661-0300        | -A9AA102    |       |
| 26-58-0105       | -A10W102     |            | 26-58-0100       | -A10Y102    |              | 41661-0281       | -A10Z102     |       | 41661-0301        | -A10AA102   |       |
| 41661-0246       | -A11W102     |            | 26-58-0110       | -A11Y102    |              | 41661-0282       | -A11Z102     |       | 41661-0302        | -A11AA102   |       |
| 41661-0247       | -A12W102     |            | 41661-0262       | -A12Y102    |              | 26-58-0121       | -A12Z102     |       | 41661-0303        | -A12AA102   |       |
| 41661-0248       | -A13W102     |            | 41661-0263       | -A13Y102    |              | 41661-0283       | -A13Z102     |       | 41661-0304        | -A13AA102   |       |
| 41661-0249       | -A14W102     |            | 41661-0264       | -A14Y102    |              | 41661-0284       | -A14Z102     |       | 41661-0305        | -A14AA102   |       |
| 41661-0250       | -A15W102     |            | 41661-0265       | -A15Y102    |              | 41661-0285       | -A15Z102     |       | 41661-0306        | -A15AA102   |       |
| 41661-0251       | -A16W102     |            | 41661-0266       | -A16Y102    |              | 41661-0286       | -A16Z102     |       | 41661-0307        | -A16AA102   |       |
| 41661-0252       | -A17W102     |            | 41661-0267       | -A17Y102    |              | 41661-0287       | -A17Z102     |       | 26-58-0173        | -A17AA102   |       |
| 41661-0253       | -A18W102     |            | 41661-0268       | -A18Y102    |              | 41661-0288       | -A18Z102     |       | 41661-0308        | -A18AA102   |       |
| 41661-0254       | -A19W102     |            | 41661-0269       | -A19Y102    |              | 41661-0289       | -A19Z102     |       | 41661-0309        | -A19AA102   |       |
| 41661-0255       | -A20W102     |            | 41661-0270       | -A20Y102    |              | 41661-0290       | -A20Z102     |       | 41661-0310        | -A20AA102   |       |
| 41661-0256       | -A21W102     |            | 41661-0271       | -A21Y102    |              | 41661-0291       | -A21Z102     |       | 41661-0311        | -A21AA102   |       |
| 41661-0257       | -A22W102     |            | 41661-0272       | -A22Y102    |              | 41661-0292       | -A22Z102     |       | 41661-0312        | -A22AA102   |       |
| 41661-0258       | -A23W102     |            | 41661-0273       | -A23Y102    |              | 41661-0293       | -A23Z102     |       | 41661-0313        | -A23AA102   |       |
| 26-58-0245       | -A24W102     |            | 26-58-0240       | -A24Y102    |              | 26-58-0241       | -A24Z102     |       | 41661-0314        | -A24AA102   |       |
|                  |              |            |                  |             |              |                  |              |       |                   |             |       |
|                  |              |            |                  |             |              |                  |              |       |                   |             |       |
|                  |              |            |                  |             |              |                  |              |       |                   |             |       |

|   |   |  |                               |
|---|---|--|-------------------------------|
| REV:<br><b>BD1</b>                        | ECR/ECN INFORMATION:<br>EC No.: <b>UCP2010-1384</b><br>DATE: <b>2/10/2010</b> | TITLE:<br><b>KK 156 HEADER ASSEMBLY<br/>FLAT BREAKAWAY<br/>2-24 CKTS</b> | SHEET No.<br><b>- 6 -</b>     |
| DOCUMENT NUMBER:<br><b>SD- 41661 -001</b> | CREATED / REVISED BY:<br><b>MKIPPER</b>                                       | CHECKED BY:<br><b>SSOUSEK</b>  | APPROVED BY:<br><b>FSMITH</b> |



|                  |              |            |                  |             |              |                   |                        |       |                  |             |       |
|------------------|--------------|------------|------------------|-------------|--------------|-------------------|------------------------|-------|------------------|-------------|-------|
| PIN NUMBER       | 2161-45(102) | PIN NUMBER | 2161-45(501)     | PIN NUMBER  | 2161-40(102) | PIN NUMBER        | 2161-21(501)           |       |                  |             |       |
| PIN LENGTH       | 20.85/.821   | PIN LENGTH | 20.85/.821       | PIN LENGTH  | 48.26/1.900  | PIN LENGTH        | 28.58/1.125            |       |                  |             |       |
| PLATING          | 102          | PLATING    | 501              | PLATING     | 102          | PLATING           | 501                    |       |                  |             |       |
| MATING "M"       | 13.23/.521   | MATING "M" | 13.23/.501       | MATING "M"  | 43.18/1.700  | MATING "M"        | 22.53/.887 REF         |       |                  |             |       |
| PCB "P"          | 4.37/.172    | PCB "P"    | 4.37/.172        | PCB "P"     | 1.83/.072    | PCB "P"           | 2.79+- .51/.110+- .020 |       |                  |             |       |
| GOLD "G"         | N/A          | GOLD "G"   | OVERALL          | GOLD "G"    | N/A          | GOLD "G"          | OVERALL                |       |                  |             |       |
| TIN "T"          | OVERALL      | TIN "T"    | N/A              | TIN "T"     | OVERALL      | TIN "T"           | N/A                    |       |                  |             |       |
| PACKAGING        | PK-41661-001 | PACKAGING  | PK-41661-001     | PACKAGING   | PK-41661-001 | PACKAGING         | PK-41661-001           |       |                  |             |       |
| STATUS           |              | STATUS     |                  | STATUS      |              | STATUS            |                        |       |                  |             |       |
| A-41661-ANB102-* |              |            | A-41661-ANB501-* |             |              | A-41661-ANAW102-* |                        |       | A-41661-ANV501-* |             |       |
| MATERIAL         | ENGINEERING  | VOIDS      | MATERIAL         | ENGINEERING | VOIDS        | MATERIAL          | ENGINEERING            | VOIDS | MATERIAL         | ENGINEERING | VOIDS |
| 26-48-6021       | -A2B102      |            | 26-48-5021       | -A2B501     |              | 26-58-5024        | -A2AW102               |       | 41661-0315       | -A2V501     |       |
| 26-48-6031       | -A3B102      |            | 26-48-5031       | -A3B501     |              | 26-58-5034        | -A3AW102               |       | 41661-0316       | -A3V501     |       |
| 26-48-6041       | -A4B102      |            | 26-48-5041       | -A4B501     |              | 26-58-5044        | -A4AW102               |       | 41661-0317       | -A4V501     |       |
| 26-48-6051       | -A5B102      |            | 26-48-5051       | -A5B501     |              | 26-58-5054        | -A5AW102               |       | 41661-0318       | -A5V501     |       |
| 26-48-6061       | -A6B102      |            | 26-48-5061       | -A6B501     |              | 26-58-5064        | -A6AW102               |       | 26-48-5068       | -A6V501     |       |
| 26-48-6071       | -A7B102      |            | 26-48-5071       | -A7B501     |              | 26-58-5074        | -A7AW102               |       | 41661-0319       | -A7V501     |       |
| 26-48-6081       | -A8B102      |            | 26-48-5081       | -A8B501     |              | 26-58-5084        | -A8AW102               |       | 26-48-5088       | -A8V501     |       |
| 26-48-6091       | -A9B102      |            | 26-48-5091       | -A9B501     |              | 26-58-5094        | -A9AW102               |       | 41661-0320       | -A9V501     |       |
| 26-48-6101       | -A10B102     |            | 26-48-5101       | -A10B501    |              | 26-58-5104        | -A10AW102              |       | 41661-0321       | -A10V501    |       |
| 26-48-6111       | -A11B102     |            | 26-48-5111       | -A11B501    |              | 26-58-5114        | -A11AW102              |       | 41661-0322       | -A11V501    |       |
| 26-48-6121       | -A12B102     |            | 26-48-5121       | -A12B501    |              | 26-58-5124        | -A12AW102              |       | 41661-0323       | -A12V501    |       |
| 26-48-6131       | -A13B102     |            | 26-48-5131       | -A13B501    |              | 26-58-5134        | -A13AW102              |       | 41661-0324       | -A13V501    |       |
| 26-48-6141       | -A14B102     |            | 26-48-5141       | -A14B501    |              | 26-58-5144        | -A14AW102              |       | 41661-0325       | -A14V501    |       |
| 26-48-6151       | -A15B102     |            | 26-48-5151       | -A15B501    |              | 26-58-5154        | -A15AW102              |       | 41661-0326       | -A15V501    |       |
| 26-48-6161       | -A16B102     |            | 26-48-5161       | -A16B501    |              | 26-58-5164        | -A16AW102              |       | 41661-0327       | -A16V501    |       |
| 26-48-6171       | -A17B102     |            | 26-48-5171       | -A17B501    |              | 26-58-5174        | -A17AW102              |       | 41661-0328       | -A17V501    |       |
| 26-48-6181       | -A18B102     |            | 26-48-5181       | -A18B501    |              | 26-58-5184        | -A18AW102              |       | 41661-0329       | -A18V501    |       |
| 26-48-6191       | -A19B102     |            | 26-48-5191       | -A19B501    |              | 26-58-5194        | -A19AW102              |       | 41661-0330       | -A19V501    |       |
| 26-48-6201       | -A20B102     |            | 26-48-5201       | -A20B501    |              | 26-58-5204        | -A20AW102              |       | 41661-0331       | -A20V501    |       |
| 26-48-6211       | -A21B102     |            | 26-48-5211       | -A21B501    |              | 26-58-5214        | -A21AW102              |       | 41661-0332       | -A21V501    |       |
| 26-48-6221       | -A22B102     |            | 26-48-5221       | -A22B501    |              | 26-58-5224        | -A22AW102              |       | 41661-0333       | -A22V501    |       |
| 26-48-6231       | -A23B102     |            | 26-48-5231       | -A23B501    |              | 26-58-5234        | -A23AW102              |       | 41661-0334       | -A23V501    |       |
| 26-48-6241       | -A24B102     |            | 26-48-5241       | -A24B501    |              | 26-58-5244        | -A24AW102              |       | 41661-0335       | -A24V501    |       |
|                  |              |            |                  |             |              |                   |                        |       |                  |             |       |
|                  |              |            |                  |             |              |                   |                        |       |                  |             |       |
|                  |              |            |                  |             |              |                   |                        |       |                  |             |       |

|   |   |  |                               |
|---|---|--|-------------------------------|
| REV:<br><b>BD1</b>                        | ECR/ECN INFORMATION:<br>EC No.: <b>UCP2010-1384</b><br>DATE: <b>2/10/2010</b> | TITLE:<br><b>KK 156 HEADER ASSEMBLY<br/>FLAT BREAKAWAY<br/>2-24 CKTS</b> | SHEET No.<br><b>- 7 -</b>     |
| DOCUMENT NUMBER:<br><b>SD- 41661 -001</b> | CREATED / REVISED BY:<br><b>MKIPPER</b>                                       | CHECKED BY:<br><b>SSOUSEK</b>  | APPROVED BY:<br><b>FSMITH</b> |

|                   |              |            |                  |             |              |                   |              |       |                   |             |       |
|-------------------|--------------|------------|------------------|-------------|--------------|-------------------|--------------|-------|-------------------|-------------|-------|
| PIN NUMBER        | 2161-5(501)  | PIN NUMBER | 2161-16(102)     | PIN NUMBER  | 2161-21(102) | PIN NUMBER        | 2161-15(102) |       |                   |             |       |
| PIN LENGTH        | 34.93/1.375  | PIN LENGTH | 25.40/1.000      | PIN LENGTH  | 28.57/1.125  | PIN LENGTH        | 15.88/.625   |       |                   |             |       |
| PLATING           | 501          | PLATING    | 102              | PLATING     | 102          | PLATING           | 102          |       |                   |             |       |
| MATING "M"        | 27.18/1.070  | MATING "M" | 18.26/.719       | MATING "M"  | 22.15/.872   | MATING "M"        | 8.81/.347    |       |                   |             |       |
| PCB "P"           | 4.50/.177    | PCB "P"    | 3.89/.153        | PCB "P"     | 3.18/.125    | PCB "P"           | 3.81/.150    |       |                   |             |       |
| GOLD "G"          | OVERALL      | GOLD "G"   | N/A              | GOLD "G"    | N/A          | GOLD "G"          | N/A          |       |                   |             |       |
| TIN "T"           | N/A          | TIN "T"    | OVERALL          | TIN "T"     | OVERALL      | TIN "T"           | OVERALL      |       |                   |             |       |
| PACKAGING         | PK-41661-001 | PACKAGING  | PK-41661-001     | PACKAGING   | PK-41661-001 | PACKAGING         | PK-41661-001 |       |                   |             |       |
| STATUS            |              | STATUS     |                  | STATUS      |              | STATUS            |              |       |                   |             |       |
| A-41661-ANAN501-* |              |            | A-41661-AND102-* |             |              | A-41661-ANBA102-* |              |       | A-41661-ANBC102-* |             |       |
| MATERIAL          | ENGINEERING  | VOIDS      | MATERIAL         | ENGINEERING | VOIDS        | MATERIAL          | ENGINEERING  | VOIDS | MATERIAL          | ENGINEERING | VOIDS |
| 26-58-4026        | -A2AN501     |            | 41661-0336       | -A2D102     |              | 26-48-4025        | -A2BA102     |       | 26-48-3023        | -A2BC102    |       |
| 26-58-4036        | -A3AN501     |            | 41661-0337       | -A3D102     |              | 26-48-4035        | -A3BA102     |       | 26-48-3033        | -A3BC102    |       |
| 26-58-4046        | -A4AN501     |            | 41661-0338       | -A4D102     |              | 26-48-4045        | -A4BA102     |       | 26-48-3043        | -A4BC102    |       |
| 26-58-4056        | -A5AN501     |            | 26-48-9052       | -A5D102     |              | 26-48-4055        | -A5BA102     |       | 26-48-3053        | -A5BC102    |       |
| 26-58-4066        | -A6AN501     |            | 41661-0339       | -A6D102     |              | 26-48-4065        | -A6BA102     |       | 26-48-3063        | -A6BC102    |       |
| 26-58-4076        | -A7AN501     |            | 41661-0340       | -A7D102     |              | 26-48-4075        | -A7BA102     |       | 26-48-3073        | -A7BC102    |       |
| 26-58-4086        | -A8AN501     |            | 26-48-9082       | -A8D102     |              | 26-48-4085        | -A8BA102     |       | 26-48-3083        | -A8BC102    |       |
| 26-58-4096        | -A9AN501     |            | 41661-0341       | -A9D102     |              | 26-48-4095        | -A9BA102     |       | 26-48-3093        | -A9BC102    |       |
| 26-58-4106        | -A10AN501    |            | 41661-0342       | -A10D102    |              | 26-48-4105        | -A10BA102    |       | 26-48-3103        | -A10BC102   |       |
| 26-58-4116        | -A11AN501    |            | 41661-0343       | -A11D102    |              | 26-48-4115        | -A11BA102    |       | 26-48-3113        | -A11BC102   |       |
| 26-58-4126        | -A12AN501    |            | 41661-0344       | -A12D102    |              | 26-48-4125        | -A12BA102    |       | 26-48-3123        | -A12BC102   |       |
| 26-58-4136        | -A13AN501    |            | 41661-0345       | -A13D102    |              | 26-48-4135        | -A13BA102    |       | 26-48-3133        | -A13BC102   |       |
| 26-58-4146        | -A14AN501    |            | 41661-0346       | -A14D102    |              | 26-48-4145        | -A14BA102    |       | 26-48-3143        | -A14BC102   |       |
| 26-58-4156        | -A15AN501    |            | 41661-0347       | -A15D102    |              | 26-48-4155        | -A15BA102    |       | 26-48-3153        | -A15BC102   |       |
| 26-58-4166        | -A16AN501    |            | 41661-0348       | -A16D102    |              | 26-48-4165        | -A16BA102    |       | 26-48-3163        | -A16BC102   |       |
| 26-58-4176        | -A17AN501    |            | 41661-0349       | -A17D102    |              | 26-48-4175        | -A17BA102    |       | 26-48-3173        | -A17BC102   |       |
| 26-58-4186        | -A18AN501    |            | 41661-0350       | -A18D102    |              | 26-48-4185        | -A18BA102    |       | 26-48-3183        | -A18BC102   |       |
| 26-58-4196        | -A19AN501    |            | 41661-0351       | -A19D102    |              | 26-48-4195        | -A19BA102    |       | 26-48-3193        | -A19BC102   |       |
| 26-58-4206        | -A20AN501    |            | 41661-0352       | -A20D102    |              | 26-48-4205        | -A20BA102    |       | 26-48-3203        | -A20BC102   |       |
| 26-58-4216        | -A21AN501    |            | 41661-0353       | -A21D102    |              | 26-48-4215        | -A21BA102    |       | 26-48-3213        | -A21BC102   |       |
| 26-58-4226        | -A22AN501    |            | 41661-0354       | -A22D102    |              | 26-48-4225        | -A22BA102    |       | 26-48-3223        | -A22BC102   |       |
| 26-58-4236        | -A23AN501    |            | 41661-0355       | -A23D102    |              | 26-48-4235        | -A23BA102    |       | 26-48-3233        | -A23BC102   |       |
| 26-58-4246        | -A24AN501    |            | 26-48-9242       | -A24D102    |              | 26-48-4245        | -A24BA102    |       | 26-48-3243        | -A24BC102   |       |
|                   |              |            |                  |             |              |                   |              |       |                   |             |       |
|                   |              |            |                  |             |              |                   |              |       |                   |             |       |
|                   |              |            |                  |             |              |                   |              |       |                   |             |       |

|   |   |  |                               |
|---|---|--|-------------------------------|
| REV:<br><b>BD1</b>                        | ECR/ECN INFORMATION:<br>EC No.: <b>UCP2010-1384</b><br>DATE: <b>2/10/2010</b> | TITLE:<br><b>KK 156 HEADER ASSEMBLY<br/>FLAT BREAKAWAY<br/>2-24 CKTS</b> | SHEET No.<br><b>- 8 -</b>     |
| DOCUMENT NUMBER:<br><b>SD- 41661 -001</b> | CREATED / REVISED BY:<br><b>MKIPPER</b>                                       | CHECKED BY:<br><b>SSOUSEK</b>  | APPROVED BY:<br><b>FSMITH</b> |

|                   |              |            |                  |             |           |                  |              |                     |                   |             |       |
|-------------------|--------------|------------|------------------|-------------|-----------|------------------|--------------|---------------------|-------------------|-------------|-------|
| PIN NUMBER        | 2161-65(501) | PIN NUMBER | 2161-1(501)      | PIN NUMBER  | CONTINUED | PIN NUMBER       | 2161-37(102) |                     |                   |             |       |
| PIN LENGTH        | 22.71/.894   | PIN LENGTH | 19.05/.750       | PIN LENGTH  |           | PIN LENGTH       | 27.94/1.100  |                     |                   |             |       |
| PLATING           | 501          | PLATING    | 501              | PLATING     | FROM      | PLATING          | 102          |                     |                   |             |       |
| MATING "M"        | 15.09/.594   | MATING "M" | 11.43/.450       | MATING "M"  |           | MATING "M"       | 12.34/.486   |                     |                   |             |       |
| PCB "P"           | 4.37/.172    | PCB "P"    | 4.37/.172        | PCB "P"     | LAST      | PCB "P"          | 12.34/.486   |                     |                   |             |       |
| GOLD "G"          | OVERALL      | GOLD "G"   | OVERALL          | GOLD "G"    |           | GOLD "G"         | N/A          |                     |                   |             |       |
| TIN "T"           | N/A          | TIN "T"    | N/A              | TIN "T"     | COLUMN    | TIN "T"          | OVERALL      |                     |                   |             |       |
| PACKAGING         | PK-41661-001 | PACKAGING  | PK-41661-001     | PACKAGING   |           | PACKAGING        | PK-41661-001 |                     |                   |             |       |
| STATUS            |              | STATUS     |                  | STATUS      |           | STATUS           |              |                     |                   |             |       |
| A-41661-ANAE501-* |              |            | A-41661-ANA501-* |             |           | A-41661-ANA501-* |              |                     | A-41661-ANCC102-* |             |       |
| MATERIAL          | ENGINEERING  | VOIDS      | MATERIAL         | ENGINEERING | VOIDS     | MATERIAL         | ENGINEERING  | VOIDS               | MATERIAL          | ENGINEERING | VOIDS |
| 26-48-2020        | -A2AE501     |            | 26-48-2021       | -A2A501     |           | 26-49-7171       | -A17A501-51  | 2,4,6,8,10,12,14,16 | 41661-0380        | -A2CC102    |       |
| 26-48-2030        | -A3AE501     |            | 26-48-2031       | -A3A501     |           |                  |              |                     | 41661-0381        | -A3CC102    |       |
| 26-48-2040        | -A4AE501     |            | 26-48-2041       | -A4A501     |           |                  |              |                     | 41661-0382        | -A4CC102    |       |
| 26-48-2050        | -A5AE501     |            | 26-48-2051       | -A5A501     |           |                  |              |                     | 41661-0383        | -A5CC102    |       |
| 26-48-2060        | -A6AE501     |            | 26-48-2061       | -A6A501     |           |                  |              |                     | 41661-0384        | -A6CC102    |       |
| 26-48-2070        | -A7AE501     |            | 26-48-2071       | -A7A501     |           |                  |              |                     | 41661-0385        | -A7CC102    |       |
| 26-48-2080        | -A8AE501     |            | 26-48-2081       | -A8A501     |           |                  |              |                     | 41661-0386        | -A8CC102    |       |
| 26-48-2090        | -A9AE501     |            | 26-48-2091       | -A9A501     |           |                  |              |                     | 41661-0387        | -A9CC102    |       |
| 26-48-2100        | -A10AE501    |            | 26-48-2101       | -A10A501    |           |                  |              |                     | 41661-0388        | -A10CC102   |       |
| 26-48-2110        | -A11AE501    |            | 26-48-2111       | -A11A501    |           |                  |              |                     | 41661-0389        | -A11CC102   |       |
| 26-48-2120        | -A12AE501    |            | 26-48-2121       | -A12A501    |           |                  |              |                     | 41661-0390        | -A12CC102   |       |
| 26-48-2130        | -A13AE501    |            | 26-48-2131       | -A13A501    |           |                  |              |                     | 41661-0391        | -A13CC102   |       |
| 26-48-2140        | -A14AE501    |            | 26-48-2141       | -A14A501    |           |                  |              |                     | 41661-0392        | -A14CC102   |       |
| 26-48-2150        | -A15AE501    |            | 26-48-2151       | -A15A501    |           |                  |              |                     | 41661-0393        | -A15CC102   |       |
| 26-48-2160        | -A16AE501    |            | 26-48-2161       | -A16A501    |           |                  |              |                     | 41661-0394        | -A16CC102   |       |
| 26-48-2170        | -A17AE501    |            | 26-48-2171       | -A17A501    |           |                  |              |                     | 41661-0395        | -A17CC102   |       |
| 26-48-2180        | -A18AE501    |            | 26-48-2181       | -A18A501    |           |                  |              |                     | 41661-0396        | -A18CC102   |       |
| 26-48-2190        | -A19AE501    |            | 26-48-2191       | -A19A501    |           |                  |              |                     | 41661-0397        | -A19CC102   |       |
| 26-48-2200        | -A20AE501    |            | 26-48-2201       | -A20A501    |           |                  |              |                     | 41661-0398        | -A20CC102   |       |
| 26-48-2210        | -A21AE501    |            | 26-48-2211       | -A21A501    |           |                  |              |                     | 41661-0399        | -A21CC102   |       |
| 26-48-2220        | -A22AE501    |            | 26-48-2221       | -A22A501    |           |                  |              |                     | 41661-0400        | -A22CC102   |       |
| 26-48-2230        | -A23AE501    |            | 26-48-2231       | -A23A501    |           |                  |              |                     | 41661-0401        | -A23CC102   |       |
| 26-48-2240        | -A24AE501    |            | 26-48-2241       | -A24A501    |           |                  |              |                     | 41661-0402        | -A24CC102   |       |
|                   |              |            |                  |             |           |                  |              |                     |                   |             |       |
|                   |              |            |                  |             |           |                  |              |                     |                   |             |       |

|   |   |  |                               |
|---|---|--|-------------------------------|
| REV:<br><b>BD1</b>                        | ECR/ECN INFORMATION:<br>EC No.: <b>UCP2010-1384</b><br>DATE: <b>2/10/2010</b> | TITLE:<br><b>KK 156 HEADER ASSEMBLY<br/>FLAT BREAKAWAY<br/>2-24 CKTS</b> | SHEET No.<br><b>- 9 -</b>     |
| DOCUMENT NUMBER:<br><b>SD- 41661 -001</b> |   | CREATED / REVISED BY:<br><b>MKIPPER</b>                                  | CHECKED BY:<br><b>SSOUSEK</b> |
|   |   | APPROVED BY:<br><b>FSMITH</b>  |                               |

|                   |              |            |                   |             |              |                   |              |       |                   |             |       |
|-------------------|--------------|------------|-------------------|-------------|--------------|-------------------|--------------|-------|-------------------|-------------|-------|
| PIN NUMBER        | 43294-0362   | PIN NUMBER | 43294-0363        | PIN NUMBER  | 43294-0587   | PIN NUMBER        | 43294-0317   |       |                   |             |       |
| PIN LENGTH        | 22.61/.890   | PIN LENGTH | 22.61/.890        | PIN LENGTH  | 28.45/1.120  | PIN LENGTH        | 21.34/.840   |       |                   |             |       |
| PLATING           | 208          | PLATING    | 228               | PLATING     | 208          | PLATING           | 208          |       |                   |             |       |
| MATING "M"        | 15.09/.594   | MATING "M" | 15.09/.594        | MATING "M"  | 22.15/.872   | MATING "M"        | 13.97/.550   |       |                   |             |       |
| PCB "P"           | 4.27/.168    | PCB "P"    | 4.27/.168         | PCB "P"     | 3.05/.120    | PCB "P"           | 4.11/.162    |       |                   |             |       |
| GOLD "G"          | 10.51/.415   | GOLD "G"   | 10.51/.415        | GOLD "G"    | 6.86/.270    | GOLD "G"          | 8.89/.350    |       |                   |             |       |
| TIN "T"           | 4.06/.160    | TIN "T"    | 4.06/.160         | TIN "T"     | 5.08/.200    | TIN "T"           | 5.08/.200    |       |                   |             |       |
| PACKAGING         | PK-41661-001 | PACKAGING  | PK-41661-001      | PACKAGING   | PK-41661-001 | PACKAGING         | PK-41661-001 |       |                   |             |       |
| STATUS            |              | STATUS     |                   | STATUS      |              | STATUS            |              |       |                   |             |       |
| A-41661-BNCA208-* |              |            | A-41661-BNCA228-* |             |              | A-41661-BNCD208-* |              |       | A-41661-BNCE208-* |             |       |
| MATERIAL          | ENGINEERING  | VOIDS      | MATERIAL          | ENGINEERING | VOIDS        | MATERIAL          | ENGINEERING  | VOIDS | MATERIAL          | ENGINEERING | VOIDS |
| 41661-0047        | -B2CA208     |            | 41661-0070        | -B2CA228    |              | 41661-0403        | -B2CD208     |       | 41661-0426        | -B2CE208    |       |
| 41661-0048        | -B3CA208     |            | 41661-0071        | -B3CA228    |              | 41661-0404        | -B3CD208     |       | 41661-0427        | -B3CE208    |       |
| 41661-0049        | -B4CA208     |            | 41661-0072        | -B4CA228    |              | 41661-0405        | -B4CD208     |       | 41661-0428        | -B4CE208    |       |
| 41661-0050        | -B5CA208     |            | 41661-0073        | -B5CA228    |              | 41661-0406        | -B5CD208     |       | 41661-0429        | -B5CE208    |       |
| 41661-0051        | -B6CA208     |            | 41661-0074        | -B6CA228    |              | 41661-0407        | -B6CD208     |       | 41661-0430        | -B6CE208    |       |
| 41661-0052        | -B7CA208     |            | 41661-0075        | -B7CA228    |              | 41661-0408        | -B7CD208     |       | 41661-0431        | -B7CE208    |       |
| 41661-0053        | -B8CA208     |            | 41661-0076        | -B8CA228    |              | 41661-0409        | -B8CD208     |       | 41661-0432        | -B8CE208    |       |
| 41661-0054        | -B9CA208     |            | 41661-0077        | -B9CA228    |              | 41661-0410        | -B9CD208     |       | 41661-0433        | -B9CE208    |       |
| 41661-0055        | -B10CA208    |            | 41661-0078        | -B10CA228   |              | 41661-0411        | -B10CD208    |       | 41661-0434        | -B10CE208   |       |
| 41661-0056        | -B11CA208    |            | 41661-0079        | -B11CA228   |              | 41661-0412        | -B11CD208    |       | 41661-0435        | -B11CE208   |       |
| 41661-0057        | -B12CA208    |            | 41661-0080        | -B12CA228   |              | 41661-0413        | -B12CD208    |       | 41661-0436        | -B12CE208   |       |
| 41661-0058        | -B13CA208    |            | 41661-0081        | -B13CA228   |              | 41661-0414        | -B13CD208    |       | 41661-0437        | -B13CE208   |       |
| 41661-0059        | -B14CA208    |            | 41661-0082        | -B14CA228   |              | 41661-0415        | -B14CD208    |       | 41661-0438        | -B14CE208   |       |
| 41661-0060        | -B15CA208    |            | 41661-0083        | -B15CA228   |              | 41661-0416        | -B15CD208    |       | 41661-0439        | -B15CE208   |       |
| 41661-0061        | -B16CA208    |            | 41661-0084        | -B16CA228   |              | 41661-0417        | -B16CD208    |       | 41661-0440        | -B16CE208   |       |
| 41661-0062        | -B17CA208    |            | 41661-0085        | -B17CA228   |              | 41661-0418        | -B17CD208    |       | 41661-0441        | -B17CE208   |       |
| 41661-0063        | -B18CA208    |            | 41661-0086        | -B18CA228   |              | 41661-0419        | -B18CD208    |       | 41661-0442        | -B18CE208   |       |
| 41661-0064        | -B19CA208    |            | 41661-0087        | -B19CA228   |              | 41661-0420        | -B19CD208    |       | 41661-0443        | -B19CE208   |       |
| 41661-0065        | -B20CA208    |            | 41661-0088        | -B20CA228   |              | 41661-0421        | -B20CD208    |       | 41661-0444        | -B20CE208   |       |
| 41661-0066        | -B21CA208    |            | 41661-0089        | -B21CA228   |              | 41661-0422        | -B21CD208    |       | 41661-0445        | -B21CE208   |       |
| 41661-0067        | -B22CA208    |            | 41661-0090        | -B22CA228   |              | 41661-0423        | -B22CD208    |       | 41661-0446        | -B22CE208   |       |
| 41661-0068        | -B23CA208    |            | 41661-0091        | -B23CA228   |              | 41661-0424        | -B23CD208    |       | 41661-0447        | -B23CE208   |       |
| 41661-0069        | -B24CA208    |            | 41661-0092        | -B24CA228   |              | 41661-0425        | -B24CD208    |       | 41661-0448        | -B24CE208   |       |

|   |   |  |                               |
|---|---|--|-------------------------------|
| REV:<br><b>BD1</b>                        | ECR/ECN INFORMATION:<br>EC No.: <b>UCP2010-1384</b><br>DATE: <b>2/10/2010</b> | TITLE:<br><b>KK 156 HEADER ASSEMBLY<br/>FLAT BREAKAWAY<br/>2-24 CKTS</b> | SHEET No.<br><b>- 10 -</b>    |
| DOCUMENT NUMBER:<br><b>SD- 41661 -001</b> |   | CREATED / REVISED BY:<br><b>MKIPPER</b>                                  | CHECKED BY:<br><b>SSOUSEK</b> |
|   |   | APPROVED BY:<br><b>FSMITH</b>  |                               |

|                   |              |            |                   |             |              |                   |               |       |                   |             |       |
|-------------------|--------------|------------|-------------------|-------------|--------------|-------------------|---------------|-------|-------------------|-------------|-------|
| PIN NUMBER        | 2161-4(102)  | PIN NUMBER | 2161-35(102)      | PIN NUMBER  | 2161-3(102)  | PIN NUMBER        | 2161-19(102)  |       |                   |             |       |
| PIN LENGTH        | 12.70 / .500 | PIN LENGTH | 17.45 / .687      | PIN LENGTH  | 23.80 / .937 | PIN LENGTH        | 26.21 / 1.032 |       |                   |             |       |
| PLATING           | 102          | PLATING    | 102               | PLATING     | 102          | PLATING           | 102           |       |                   |             |       |
| MATING "M"        | 5.89 / .232  | MATING "M" | 9.63 / .379       | MATING "M"  | 17.02 / .670 | MATING "M"        | 11.48 / .452  |       |                   |             |       |
| PCB "P"           | 3.56 / .140  | PCB "P"    | 4.57 / .180       | PCB "P"     | 3.53 / .139  | PCB "P"           | 11.48 / .452  |       |                   |             |       |
| GOLD "G"          | NA           | GOLD "G"   | NA                | GOLD "G"    | NA           | GOLD "G"          | N/A           |       |                   |             |       |
| TIN "T"           | OVERALL      | TIN "T"    | OVERALL           | TIN "T"     | OVERALL      | TIN "T"           | OVERALL       |       |                   |             |       |
| PACKAGING         | PK-41661-001 | PACKAGING  | PK-41661-001      | PACKAGING   | PK-41661-001 | PACKAGING         | PK-41661-001  |       |                   |             |       |
| STATUS            |              | STATUS     |                   | STATUS      |              | STATUS            |               |       |                   |             |       |
| A-41661-ANCF102-* |              |            | A-41661-ANCG102-* |             |              | A-41661-ANCH102-* |               |       | A-41661-ANCL102-* |             |       |
| MATERIAL          | ENGINEERING  | VOIDS      | MATERIAL          | ENGINEERING | VOIDS        | MATERIAL          | ENGINEERING   | VOIDS | MATERIAL          | ENGINEERING | VOIDS |
| 41661-0449        | -A02CF102    |            | 41661-0472        | -A02CG102   |              |                   |               |       |                   |             |       |
| 41661-0450        | -A03CF102    |            | 41661-0473        | -A03CG102   |              |                   |               |       |                   |             |       |
| 41661-0451        | -A04CF102    |            | 41661-0474        | -A04CG102   |              | 41661-0497        | A04CH102      |       |                   |             |       |
| 41661-0452        | -A05CF102    |            | 41661-0475        | -A05CG102   |              |                   |               |       |                   |             |       |
| 41661-0453        | -A06CF102    |            | 41661-0476        | -A06CG102   |              |                   |               |       | 41661-0522        | -A06CL102   |       |
| 41661-0454        | -A07CF102    |            | 41661-0477        | -A07CG102   |              |                   |               |       |                   |             |       |
| 41661-0455        | -A08CF102    |            | 41661-0478        | -A08CG102   |              |                   |               |       |                   |             |       |
| 41661-0456        | -A09CF102    |            | 41661-0479        | -A09CG102   |              |                   |               |       | 41661-0525        | -A09CL102   |       |
| 41661-0457        | -A10CF102    |            | 41661-0480        | -A10CG102   |              |                   |               |       |                   |             |       |
| 41661-0458        | -A11CF102    |            | 41661-0481        | -A11CG102   |              |                   |               |       |                   |             |       |
| 41661-0459        | -A12CF102    |            | 41661-0482        | -A12CG102   |              |                   |               |       |                   |             |       |
| 41661-0460        | -A13CF102    |            | 41661-0483        | -A13CG102   |              |                   |               |       |                   |             |       |
| 41661-0461        | -A14CF102    |            | 41661-0484        | -A14CG102   |              |                   |               |       |                   |             |       |
| 41661-0462        | -A15CF102    |            | 41661-0485        | -A15CG102   |              |                   |               |       |                   |             |       |
| 41661-0463        | -A16CF102    |            | 41661-0486        | -A16CG102   |              |                   |               |       |                   |             |       |
| 41661-0464        | -A17CF102    |            | 41661-0487        | -A17CG102   |              |                   |               |       |                   |             |       |
| 41661-0465        | -A18CF102    |            | 41661-0488        | -A18CG102   |              |                   |               |       |                   |             |       |
| 41661-0466        | -A19CF102    |            | 41661-0489        | -A19CG102   |              |                   |               |       |                   |             |       |
| 41661-0467        | -A20CF102    |            | 41661-0490        | -A20CG102   |              |                   |               |       |                   |             |       |
| 41661-0468        | -A21CF102    |            | 41661-0491        | -A21CG102   |              |                   |               |       |                   |             |       |
| 41661-0469        | -A22CF102    |            | 41661-0492        | -A22CG102   |              |                   |               |       |                   |             |       |
| 41661-0470        | -A23CF102    |            | 41661-0493        | -A23CG102   |              |                   |               |       |                   |             |       |
| 41661-0471        | -A24CF102    |            | 41661-0494        | -A24CG102   |              |                   |               |       |                   |             |       |

|   |   |  |                               |
|---|---|--|-------------------------------|
| REV:<br><b>BD1</b>                        | ECR/ECN INFORMATION:<br>EC No.: <b>UCP2010-1384</b><br>DATE: <b>2/10/2010</b> | TITLE:<br><b>KK 156 HEADER ASSEMBLY<br/>FLAT BREAKAWAY<br/>2-24 CKTS</b> | SHEET No.<br><b>- 11 -</b>    |
| DOCUMENT NUMBER:<br><b>SD- 41661 -001</b> | CREATED / REVISED BY:<br><b>MKIPPER</b>                                       | CHECKED BY:<br><b>SSOUSEK</b>  | APPROVED BY:<br><b>FSMITH</b> |

|                  |              |            |                  |             |               |                   |               |       |                   |             |       |
|------------------|--------------|------------|------------------|-------------|---------------|-------------------|---------------|-------|-------------------|-------------|-------|
| PIN NUMBER       | 43294-0236   | PIN NUMBER | 43294-0614       | PIN NUMBER  | 2161-5(102)   | PIN NUMBER        | 2161-64(102)  |       |                   |             |       |
| PIN LENGTH       | 19.05 / .750 | PIN LENGTH | 29.21 / 1.150    | PIN LENGTH  | 34.93 / 1.375 | PIN LENGTH        | 29.85 / 1.175 |       |                   |             |       |
| PLATING          | 208          | PLATING    | 208              | PLATING     | 102           | PLATING           | 102           |       |                   |             |       |
| MATING "M"       | 12.93 / .509 | MATING "M" | 21.21 / .835     | MATING "M"  | 27.31 / 1.075 | MATING "M"        | 24.38 / .960  |       |                   |             |       |
| PCB "P"          | 2.87 / .113  | PCB "P"    | 4.75 / .187      | PCB "P"     | 4.37 / .172   | PCB "P"           | 2.21 / .087   |       |                   |             |       |
| GOLD "G"         | 6.86 / .270  | GOLD "G"   | 6.86 / .270      | GOLD "G"    | N/A           | GOLD "G"          | N/A           |       |                   |             |       |
| TIN "T"          | 4.06 / .160  | TIN "T"    | 5.08 / .200      | TIN "T"     | OVERALL       | TIN "T"           | OVERALL       |       |                   |             |       |
| PACKAGING        | PK-41661-001 | PACKAGING  | PK-41661-001     | PACKAGING   | PK-41661-001  | PACKAGING         | PK-41661-001  |       |                   |             |       |
| STATUS           |              | STATUS     |                  | STATUS      |               | STATUS            |               |       |                   |             |       |
| A-41661-BNB208-* |              |            | A-41661-BND208-* |             |               | A-41661-ANCM102-* |               |       | A-41661-ANCN102-* |             |       |
| MATERIAL         | ENGINEERING  | VOIDS      | MATERIAL         | ENGINEERING | VOIDS         | MATERIAL          | ENGINEERING   | VOIDS | MATERIAL          | ENGINEERING | VOIDS |
|                  | -B02B208     |            |                  | -B02D208    |               |                   |               |       |                   |             |       |
|                  | -B03B208     |            |                  | -B03D208    |               |                   |               |       |                   |             |       |
|                  | -B04B208     |            | 41661-0566       | -B04D208    |               |                   |               |       |                   |             |       |
|                  | -B05B208     |            |                  | -B05D208    |               |                   |               |       |                   |             |       |
|                  | -B06B208     |            |                  | -B06D208    |               |                   |               |       |                   |             |       |
|                  | -B07B208     |            |                  | -B07D208    |               |                   |               |       |                   |             |       |
|                  | -B08B208     |            |                  | -B08D208    |               |                   |               |       |                   |             |       |
|                  | -B09B208     |            |                  | -B09D208    |               |                   |               |       |                   |             |       |
| 41661-0549       | -B10B208     |            |                  | -B10D208    |               |                   |               |       | 41661-0621        | -A10CN102   |       |
|                  | -B11B208     |            |                  | -B11D208    |               |                   |               |       |                   |             |       |
| 41661-0551       | -B12B208     |            |                  | -B12D208    |               | 41661-0600        | -A12CM102     |       |                   |             |       |
|                  | -B13B208     |            |                  | -B13D208    |               |                   |               |       |                   |             |       |
|                  | -B14B208     |            |                  | -B14D208    |               |                   |               |       |                   |             |       |
|                  | -B15B208     |            |                  | -B15D208    |               |                   |               |       |                   |             |       |
|                  | -B16B208     |            |                  | -B16D208    |               |                   |               |       |                   |             |       |
|                  | -B17B208     |            |                  | -B17D208    |               |                   |               |       |                   |             |       |
|                  | -B18B208     |            |                  | -B18D208    |               |                   |               |       |                   |             |       |
|                  | -B19B208     |            |                  | -B19D208    |               |                   |               |       |                   |             |       |
|                  | -B20B208     |            |                  | -B20D208    |               |                   |               |       |                   |             |       |
|                  | -B21B208     |            |                  | -B21D208    |               |                   |               |       |                   |             |       |
|                  | -B22B208     |            |                  | -B22D208    |               |                   |               |       |                   |             |       |
|                  | -B23B208     |            |                  | -B23D208    |               |                   |               |       |                   |             |       |
|                  | -B24B208     |            |                  | -B24D208    |               |                   |               |       |                   |             |       |

|   |   |  |                               |
|---|---|--|-------------------------------|
| REV:<br><b>BD1</b>                        | ECR/ECN INFORMATION:<br>EC No.: <b>UCP2010-1384</b><br>DATE: <b>2/10/2010</b> | TITLE:<br><b>KK 156 HEADER ASSEMBLY<br/>FLAT BREAKAWAY<br/>2-24 CKTS</b> | SHEET No.<br><b>- 12 -</b>    |
| DOCUMENT NUMBER:<br><b>SD- 41661 -001</b> | CREATED / REVISED BY:<br><b>MKIPPER</b>                                       | CHECKED BY:<br><b>SSOUSEK</b>  | APPROVED BY:<br><b>FSMITH</b> |

