

**PLEASE CHECK WWW.MOLEX.COM FOR LATEST PART INFORMATION**

**Part Number:** [0009017083](#)  
**Status:** **Active**  
**Overview:** [edge card connectors](#)  
**Description:** 3.96mm (.156") Pitch KK® Crimp Housing, Edge Card Connector, Single-Sided, Surface Mount, Polarized, With Flange, 8 Circuits, Rib between 5 & 6

**Documents:**

[3D Model](#) [Drawing \(PDF\)](#)  
[Packaging Specification \(PDF\)](#) [RoHS Certificate of Compliance \(PDF\)](#)

**Agency Certification**

UL E29179

**General**

Product Family Edge Card Connectors  
 Series [2574](#)  
 Component Type Edgecard to Wire  
 Overview [edge card connectors](#)  
 Product Name Edge Card, KK®

**Physical**

Circuits (Loaded) 8  
 Circuits (maximum) 8  
 Circuits Detail All Signal  
 Color - Resin Natural  
 Durability (mating cycles max) 25  
 Entry Angle Vertical (Top Entry)  
 Flammability 94V-2  
 Keying to Mating Part Yes  
 Material - Plating Mating n/a  
 Material - Resin Nylon  
 PCB Retention None  
 PCB Thickness Recommended (in) 0.062 In  
 PCB Thickness Recommended (mm) 1.60 mm  
 Packaging Type Bag  
 Panel Mount With Flange  
 Pitch - Mating Interface (in) 0.156 In  
 Pitch - Mating Interface (mm) 3.96 mm  
 Polarized to Mating Part Yes  
 Temperature Range - Operating 0°C to +75°C  
 Termination Interface: Style N/A

**Electrical**

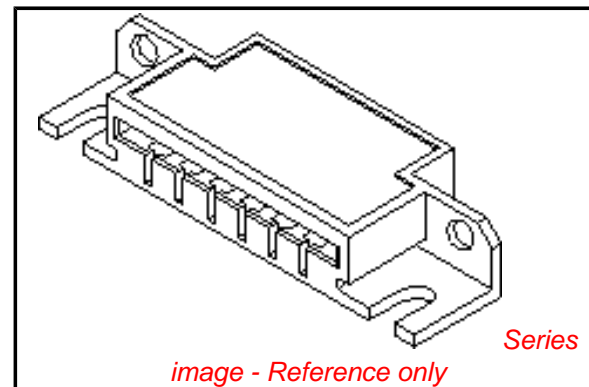
Current - Maximum per Contact 4.25A, 4.5A, 4.75A, 4A, 5A  
 Voltage - Maximum 250V

**Material Info**

Old Part Number 2574-08B4

**Reference - Drawing Numbers**

Packaging Specification PK-2574-001  
 Sales Drawing SD-2574



**EU RoHS**

**ELV and RoHS  
 Compliant**  
**REACH SVHC  
 Contains SVHC: No**  
**Halogen-Free  
 Status  
 Not Reviewed**

**China RoHS**



**Need more information on product  
 environmental compliance?**

Email [productcompliance@molex.com](mailto:productcompliance@molex.com)  
 For a multiple part number RoHS Certificate of Compliance, [click here](#)

Please visit the [Contact Us](#) section for any non-product compliance questions.

**Search Parts in this Series**

[2574Series](#)

**Mates With**

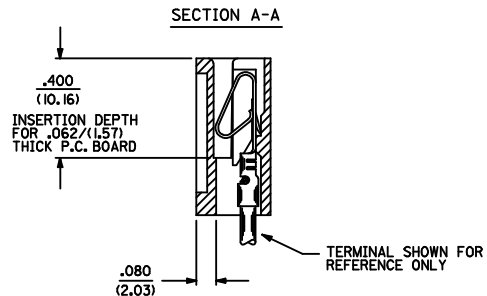
PCB, 1.6mm (0.62") max. thickness

**Use With**

[2878](#) Terminals, [2478](#) Terminals, [2578](#) Terminals, Bifurcated

NOTES:

1. MATERIAL NYLON 6/6, 94V-2.
2. FINISH: SEE CRIMP TERMINAL DRAWING.
3. THIS PRODUCT CONFORMS TO PRODUCT SPECIFICATION PS-08-50.
4. PACKAGING: BULK PER PK-2574-001
5. CONNECTOR TO BE USED WITH CRIMP TERMINALS:  
 2478-\* 18-24 GAGE WIRE, .110/(2.79) MAX. INSULATION DIAMETER.  
 2578-\* 22-26 GAGE WIRE, .065/(1.65) MAX. INSULATION DIAMETER.
6. DIMENSIONS GIVEN ACROSS CENTERLINES ARE SYMMETRICAL ABOUT THOSE CENTERLINES WITHIN ONE HALF THE TOTAL TOLERANCE.
7. PARTS LESS THAN 7 CIRCUITS ARE TO INDICATE ONLY CIRCUIT NO. 1. ALL OTHERS ARE TO IDENTIFY BOTH THE FIRST AND LAST CIRCUITS.
8. PART CONFORMS TO CLASS B REQUIREMENTS OF COSMETIC SPECIFICATION PS-45499-002



2574 - N \* \* \*

NO. OF CIRCUITS

COLOR CODE  
 BLANK=NATURAL  
 BK=BLACK

OPTION CODE

| CODE | MOUNTING EARS | CHAMFERED SLOT | PCB THK | MOUNTING HOLES |
|------|---------------|----------------|---------|----------------|
| A    | NO            | NO             | .062    | NO             |
| B    | YES           | NO             | .062    | NO             |
| C    | NO            | YES            | .062    | NO             |
| D    | YES           | YES            | .062    | NO             |
| E    | NO            | NO             | .032    | NO             |
| F    | YES           | NO             | .062    | YES            |

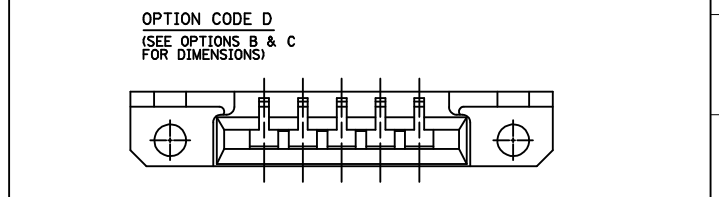
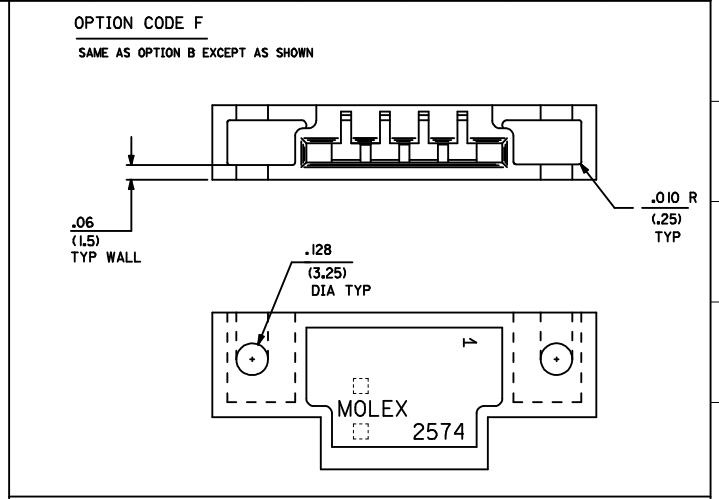
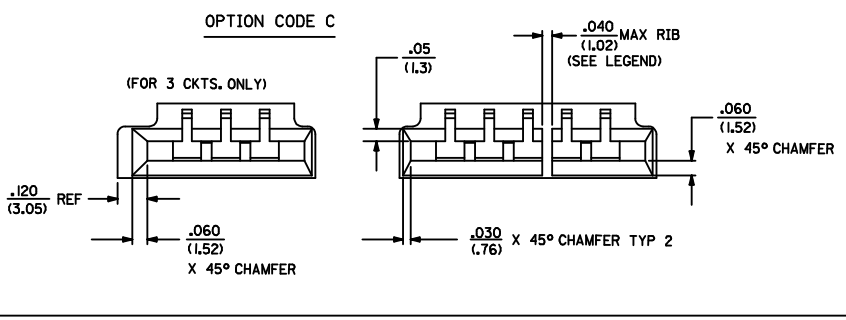
RIB LOCATION CODE (BETWEEN CKTS)

- 1 = NONE
- 2 = 2-3
- 3 = 3-4
- 4 = 5-6
- 5 = 3-4, 5-6
- 6 = 4-5, 7-8
- 7 = 5-6, 8-9
- 8 = 5-6, 10-11
- 9 = 4-5, 7-8, 11-12
- 10 = 5-6, 10-11, 14-15
- 11 = 5-6, 10-11, 15-16
- 12 = 5-6, 11-12, 16-17
- 13 = 5-6, 11-12, 17-18
- 14 = 4-5, 7-8, 11-12, 15-16
- 15 = 4-5, 8-9, 12-13, 16-17, 20-21
- 16 = 5-6, 11-12, 18-19

|    |      |
|----|------|
| 3  | C10  |
| 2  | C10  |
| 1  | C10  |
| SN | REV. |

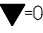
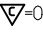
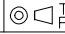

|  |                                    |   |                                     |                                 |   |                     |                      |                        |
|--|------------------------------------|---|-------------------------------------|---------------------------------|---|---------------------|----------------------|------------------------|
| <b>ADD PART NUMBERS</b><br>DEC NO: UCP2009-0858<br>DRAWN/KIPER 2008/12/29<br>CHKD/SOUSEK 2008/12/30<br>APPR/FSMTH 2009/01/05 | <b>QUALITY SYMBOLS</b><br>=0<br>=0 | <b>GENERAL TOLERANCES (UNLESS SPECIFIED)</b>  |                                     | <b>DIMENSION STYLE</b><br>IN/MM |   | SCALE<br>4:1        | DESIGN UNITS<br>INCH | THIRD ANGLE PROJECTION |
|  |                                    | 4 PLACES ± --- ± ---<br>3 PLACES ± --- ± .010<br>2 PLACES ± 0.25 ± .015<br>1 PLACE ± 0.36 ± --- | DRAWN BY<br>PEREZ-ARGUET 1988/03/02 | DATE<br>1988/03/02              | TITLE<br>EDGE CARD CONNECTOR<br>.156/(3.96) CENTERS<br>CRIMP TYPE-2574 SERIES |                     |                      |                        |
|  |                                    | ANGULAR ±1/2°   | CHECKED BY<br>PATEL 1988/03/02      | DATE<br>1988/03/02              | MOLEX INCORPORATED  |                     |                      |                        |
|  |                                    | DRAFT WHERE APPLICABLE<br>MUST REMAIN WITHIN DIMENSIONS   | APPROVED BY<br>LENZ 1988/03/02      | DATE<br>1988/03/02              | MOLEX INCORPORATED  |                     |                      |                        |
| C10  |                                    | MATERIAL NO.<br>SEE CHART   |                                     | DOCUMENT NO.<br>SD-2574         |   | SHEET NO.<br>1 OF 3 |                      |                        |

| NO. OF CKT'S | DIM. C           | DIM. D            | DIM. E                    | DIM. A           |
|--------------|------------------|-------------------|---------------------------|------------------|
| 3            | .632<br>(16.05)  | 1.143<br>(29.03)  | .312±.002<br>(7.92±.05)   | .618<br>(15.70)  |
| 4            | .788<br>(20.02)  | 1.224<br>(31.09)  | .468±.002<br>(11.89±.05)  | .774<br>(19.66)  |
| 5            | .944<br>(23.98)  | 1.380<br>(35.05)  | .624±.003<br>(15.85±.08)  | .922<br>(23.42)  |
| 6            | 1.100<br>(27.94) | 1.536<br>(39.01)  | .780±.003<br>(19.81±.08)  | 1.078<br>(27.38) |
| 7            | 1.256<br>(31.90) | 1.692<br>(42.98)  | .936±.003<br>(23.77±.08)  | 1.232<br>(31.29) |
| 8            | 1.412<br>(35.86) | 1.848<br>(46.94)  | 1.092±.004<br>(27.74±.10) | 1.388<br>(35.26) |
| 9            | 1.568<br>(39.83) | 2.004<br>(50.90)  | 1.248±.004<br>(31.70±.10) | 1.544<br>(39.22) |
| 10           | 1.724<br>(43.79) | 2.160<br>(54.86)  | 1.404±.006<br>(35.66±.15) | 1.700<br>(43.18) |
| 11           | 1.880<br>(47.75) | 2.316<br>(58.83)  | 1.560±.006<br>(39.62±.15) | 1.854<br>(47.09) |
| 12           | 2.036<br>(51.71) | 2.472<br>(62.79)  | 1.716±.006<br>(43.59±.15) | 2.010<br>(51.05) |
| 13           | 2.192<br>(55.68) | 2.628<br>(66.75)  | 1.872±.006<br>(47.55±.15) | 2.164<br>(54.97) |
| 14           | 2.348<br>(59.64) | 2.784<br>(70.71)  | 2.028±.007<br>(51.51±.18) | 2.318<br>(58.88) |
| 15           | 2.504<br>(63.60) | 2.940<br>(74.68)  | 2.184±.007<br>(55.47±.18) | 2.474<br>(62.84) |
| 16           | 2.660<br>(67.56) | 3.096<br>(78.64)  | 2.340±.007<br>(59.44±.18) | 2.631<br>(66.83) |
| 17           | 2.816<br>(71.53) | 3.252<br>(82.60)  | 2.496±.008<br>(63.40±.20) | 2.784<br>(70.71) |
| 18           | 2.972<br>(75.49) | 3.408<br>(86.56)  | 2.652±.009<br>(67.36±.23) | 2.954<br>(75.03) |
| 19           | 3.128<br>(79.45) | 3.564<br>(90.53)  | 2.808±.009<br>(71.32±.23) | 3.095<br>(78.61) |
| 20           | 3.284<br>(83.41) | 3.720<br>(94.49)  | 2.964±.009<br>(75.29±.23) | 3.251<br>(82.58) |
| 21           | 3.440<br>(87.38) | 3.876<br>(98.45)  | 3.120±.010<br>(79.25±.25) | 3.407<br>(86.54) |
| 22           | 3.596<br>(91.34) | 4.032<br>(102.41) | 3.276±.011<br>(83.21±.25) | 3.562<br>(90.47) |
| 23           | 3.752<br>(95.30) | 4.188<br>(106.38) | 3.432±.011<br>(87.17±.28) | 3.716<br>(94.39) |
| 24           | 3.908<br>(99.26) | 4.344<br>(110.34) | 3.588±.012<br>(91.14±.30) | 3.871<br>(98.32) |



|  |                                      |  |  |                                 |  |   |  |                                     |  |  |  |                  |  |
|--|--------------------------------------|--|--|---------------------------------|--|---|--|-------------------------------------|--|--|--|------------------|--|
| <b>REVISE FACTORY ID.</b><br>REC NO. UCF2009-0858<br>DRAWN BY PEREZ-ARGUET<br>CHKD BY SQUOSEK<br>APPR:FSM TH<br>2008/10/29<br>2008/10/30<br>2009/01/05 | <b>QUALITY SYMBOLS</b><br>▽=0<br>▽=0 | <b>GENERAL TOLERANCES (UNLESS SPECIFIED)</b>   |  | <b>DIMENSION STYLE</b><br>IN/MM |  | <b>SCALE</b><br>---   |  | <b>DESIGN UNITS</b><br>INCH         |  | THIRD ANGLE PROJECTION   |  |                  |  |
|  |                                      | 4 PLACES ± --- ± ---<br>3 PLACES ± --- ± .005<br>2 PLACES ± 0.13 ± .01<br>1 PLACE ± 0.25 ± --- |  | mm      INCH                    |  | DRAWN BY PEREZ-ARGUET<br>DATE 1988/03/02  |  | CHECKED BY DATE<br>PATEL 1988/03/02 |  | <b>TITLE</b><br>EDGE CARD CONNECTOR<br>.156/(3.96) CENTERS<br>CRIMP TYPE-2574 SERIES |  |                  |  |
|  |                                      | ANGULAR ±1/2°  |  | MATERIAL NO. SEE CHART          |  | APPROVED BY ENZ<br>DATE 1988/03/02  |  | MOLEX INCORPORATED                  |  | DOCUMENT NO. SD-2574   |  | SHEET NO. 2 OF 3 |  |
|  |                                      | DRAFT WHERE APPLICABLE MUST REMAIN WITHIN DIMENSIONS   |  | SIZE D                          |  | THIS DRAWING CONTAINS INFORMATION THAT IS PROPRIETARY TO MOLEX INCORPORATED AND SHOULD NOT BE USED WITHOUT WRITTEN PERMISSION |  |                                     |  |  |  |                  |  |

|   | 2574-NA*   |                        | 2574-NB*   |                        | 2574-NC*    |                        | 2574-ND*   |                        | 2574-NE* |                        | 2574-NF*   |                        |
|---|------------|------------------------|------------|------------------------|-------------|------------------------|------------|------------------------|----------|------------------------|------------|------------------------|
|   | PART NO.   | ENG. NO. (SUFFIX ONLY) | PART NO.   | ENG. NO. (SUFFIX ONLY) | PART NO.    | ENG. NO. (SUFFIX ONLY) | PART NO.   | ENG. NO. (SUFFIX ONLY) | PART NO. | ENG. NO. (SUFFIX ONLY) | PART NO.   | ENG. NO. (SUFFIX ONLY) |
| M | 09-01-6031 | -3A1                   | 09-01-7031 | -3B1                   | 09-01-6038  | -3C1                   | 09-01-6082 | -3D                    |          | -4E1                   | 09-01-7065 | -6F1-BK                |
|   | 09-01-6041 | -4A1                   | 09-01-7041 | -4B1                   | 009-01-6048 | -04C1                  |            | -08D1                  |          | -6E1                   | 09-01-7087 | -8F1-BK                |
|   | 09-01-6051 | -5A1                   | 09-01-7051 | -5B1                   | 09-01-6088  | -08C1                  |            | -20D1                  |          |                        |            |                        |
|   | 09-01-6064 | -6A1                   | 09-01-7064 | -6B1                   |             | -20C1                  |            |                        |          |                        |            |                        |
|   | 09-01-6081 | -8A1                   | 09-01-7081 | -8B1                   |             |                        |            |                        |          |                        |            |                        |
| L |            | -8A1D                  | 09-01-7069 | -6B1D                  |             |                        |            |                        |          |                        |            |                        |
|   | 09-01-6055 | -5A2                   |            | -8B1D                  |             |                        |            |                        |          |                        |            |                        |
|   | 09-01-6061 | -6A2                   | 09-01-7061 | -6B2                   |             |                        |            |                        |          |                        |            |                        |
|   | 09-01-6085 | -8A2                   | 09-01-7085 | -8B2                   |             |                        |            |                        |          |                        |            |                        |
|   | 09-01-6095 | -9A2                   | 09-01-7095 | -9B2                   |             |                        |            |                        |          |                        |            |                        |
|   | 09-01-6071 | -7A3                   | 09-01-7071 | -7B3                   |             |                        |            |                        |          |                        |            |                        |
|   | 09-01-6086 | -8A3                   | 09-01-7086 | -8B3                   |             |                        |            |                        |          |                        |            |                        |
| K | 09-01-6083 | -8A4                   | 09-01-7083 | -8B4                   |             |                        |            |                        |          |                        |            |                        |
|   | 09-01-6094 | -9A4                   | 09-01-7094 | -9B4                   |             |                        |            |                        |          |                        |            |                        |
|   | 09-01-6091 | -9A5                   | 09-01-7091 | -9B5                   |             |                        |            |                        |          |                        |            |                        |
|   | 09-01-6101 | -10A6                  | 09-01-7101 | -10B6                  |             |                        |            |                        |          |                        |            |                        |
|   | 09-01-6121 | -12A7                  | 09-01-7121 | -12B7                  |             |                        |            |                        |          |                        |            |                        |
|   | 09-01-6129 | -12A4                  | 09-01-7129 | -12B4                  |             |                        |            |                        |          |                        |            |                        |
| J | 09-01-6181 | -18A8                  | 09-01-7181 | -18B8                  |             |                        |            |                        |          |                        |            |                        |
|   | 09-01-6151 | -15A9                  | 09-01-7151 | -15B9                  |             |                        |            |                        |          |                        |            |                        |
|   | 09-01-6161 | -16A9                  | 09-01-7161 | -16B9                  |             |                        |            |                        |          |                        |            |                        |
|   | 09-01-6171 | -17A10                 | 09-01-7171 | -17B10                 |             |                        |            |                        |          |                        |            |                        |
|   | 09-01-6211 | -21A11                 | 09-01-7211 | -21B11                 |             |                        |            |                        |          |                        |            |                        |
|   | 09-01-6224 | -22A12                 | 09-01-7224 | -22B12                 |             |                        |            |                        |          |                        |            |                        |
|   | 09-01-6221 | -22A13                 | 09-01-7221 | -22B13                 |             |                        |            |                        |          |                        |            |                        |
| I | 09-01-6191 | -19A14                 | 09-01-7191 | -19B14                 |             |                        |            |                        |          |                        |            |                        |
|   | 09-01-6241 | -24A15                 | 09-01-7241 | -24B15                 |             |                        |            |                        |          |                        |            |                        |
|   | 09-01-7222 | -22A16                 |            | -6B1-BK                |             |                        |            |                        |          |                        |            |                        |

|  |  |   |   |   |  |  |   |
|--|--|---|---|---|--|--|---|
| <b>ADD PART NUMBERS</b><br>DEC. NO. UCP2009-0858<br>DRAWN BY PER 2008/12/29<br>CHKD:SSOUSEK 2008/12/30<br>APPR:FSM TH 2009/01/05 | <b>QUALITY SYMBOLS</b><br> = 0.005<br> = 0.010 | <b>GENERAL TOLERANCES (UNLESS SPECIFIED)</b>  |   | <b>DIMENSION STYLE</b><br>IN/MM   | <b>SCALE</b><br>---  | <b>DESIGN UNITS</b><br>INCH  |  <b>THIRD ANGLE PROJECTION</b> |
|  |  | 4 PLACES # --- # ---<br>3 PLACES # --- # ---<br>2 PLACES # --- # ---<br>1 PLACE # --- # --- | mm INCH<br># --- # ---<br># --- # ---<br># --- # ---<br># --- # --- | <b>DRAWN BY</b> PEREZ-ARGUET<br><b>DATE</b> 1988/03/02<br><b>CHECKED BY</b> PATEL<br><b>DATE</b> 1988/03/02<br><b>APPROVED BY</b> ENZ<br><b>DATE</b> 1988/03/02 | <b>TITLE</b><br>EDGE CARD CONNECTOR<br>.156/(3.96) CENTERS<br>CRIMP TYPE-2574 SERIES |  <b>MOLEX INCORPORATED</b>                      | <b>SHEET NO.</b><br>3 OF 3  |
|  |  | <b>DRAFT WHERE APPLICABLE MUST REMAIN WITHIN DIMENSIONS</b>                                 |   | <b>MATERIAL NO.</b> SEE CHART<br><b>SIZE</b> D  | <b>DOCUMENT NO.</b> SD-2574  | <b>THIS DRAWING CONTAINS INFORMATION THAT IS PROPRIETARY TO MOLEX INCORPORATED AND SHOULD NOT BE USED WITHOUT WRITTEN PERMISSION</b> |   |
|  |  |   |   |   |  |  |   |