



Data Sheet



Product Category: RF SAW Filter

Part Number	Package	Application	Last Modified
803-RF481.2M-A	3.8 x 3.8 SMD	CDMA450(F-Band) Tx	Jan. 01, 2007

TYPE :
CDMA450(F-Band), RF-Tx SAW Filter



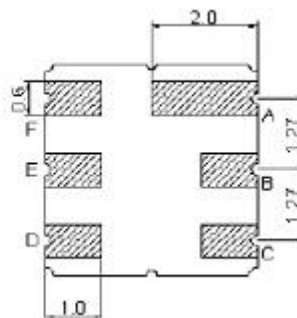
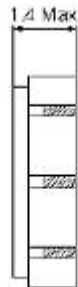
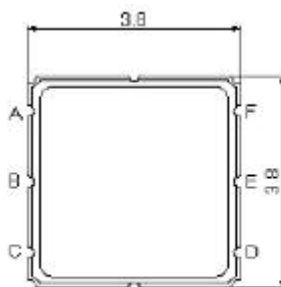
PART NUMBER :
803-RF481.2M-A

OPERATING CONDITIONS / ELECTRICAL CHARACTERISTICS

PARAMETERS	Condition	Minimum	Typical	Maximum	Units
Center Frequency (Fo)	-	-	481.2	-	MHz
Maximum Insertion Loss	479.0 ~ 483.5 MHz	-	1.8	2.8	dB
Stop Band Attenuation:	0.3 ~ 467.0 MHz	25	27	-	dB
	489.0 ~ 493.5 MHz	30	49	-	
	493.5 ~ 1700 MHz	23	27	-	
	1700 ~ 2000 MHz	18	20	-	
Source Impedance (single ended)*	-	-	50	-	ohm
Load Impedance (single ended)*	-	-	50	-	ohm
VSWR	479.0 ~ 483.5 MHz	-	1.5	2.0	-
Input Power	-	-	-	30	dBm
Operating Temperature	-	-30	-	+80	°C

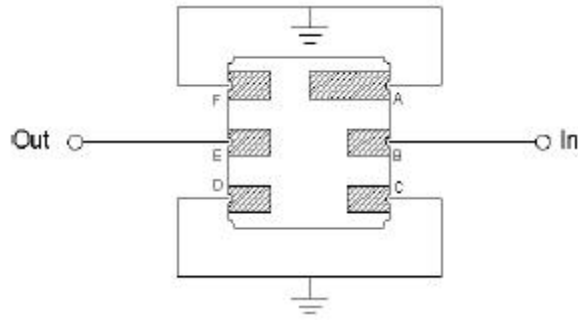
* No Matching Network

PACKAGE OUTLINE (mm)



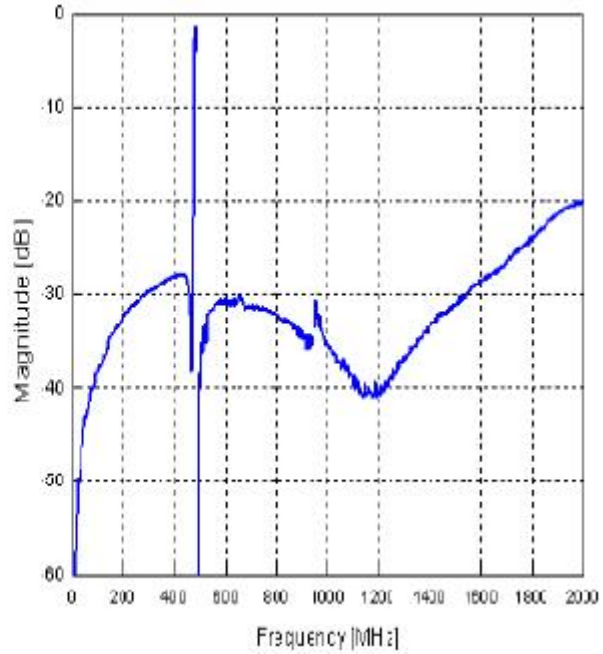
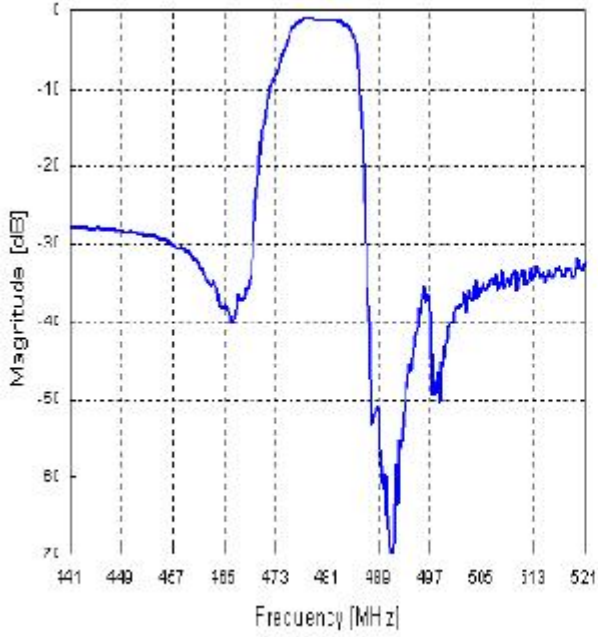
PIN LAYOUT	
A	Ground
B	In
C	Ground
D	Ground
E	Out
F	Ground

TEST FIXTURE

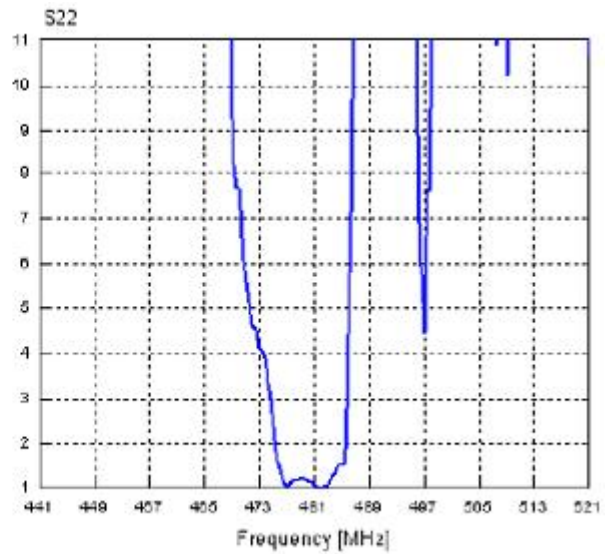
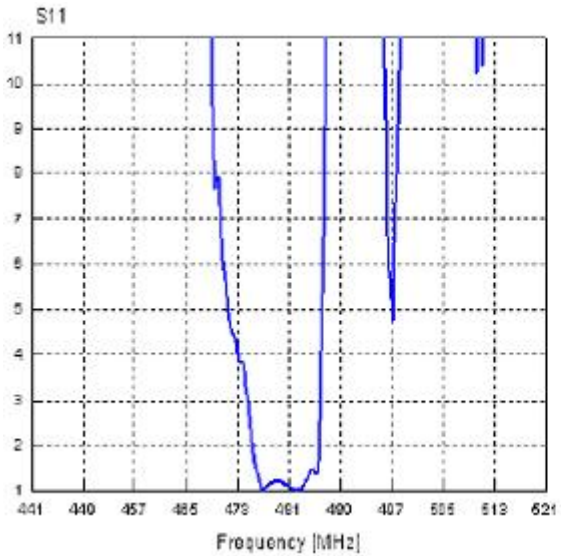


Load Impedance = 100 ohms
 Source Impedance = 50 ohms

FREQUENCY RESPONSE



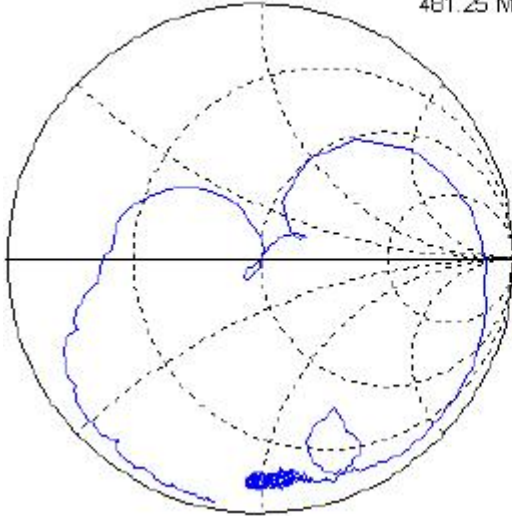
VSWR



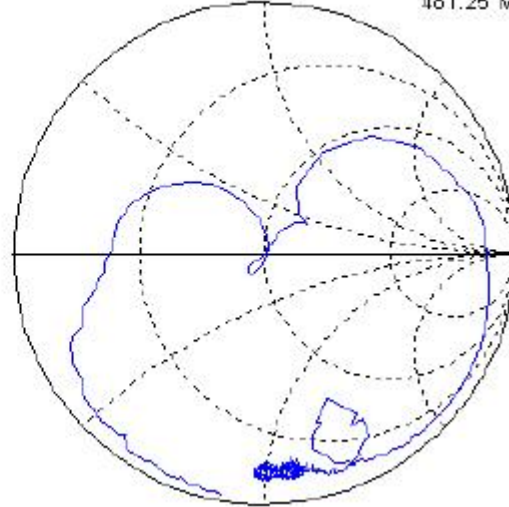
SMITH CHART

S11

47.5406-j 2.2097
481.25 MHz B22



48.1799-j 1.7494
481.25 MHz



Oscilent Corporation - CALL **949.252.0522**
18195 East McDermott Street, Building D, Irvine, CA 92614, USA
Fax: 949.252.0599, E-Mail: Sales@Oscilent.com

Part No.: 803-RF481.2M-A