

B-74-09-51

T-74-09-01

VHF - UHF High Intercept Low Noise Amplifiers

2-500MHz

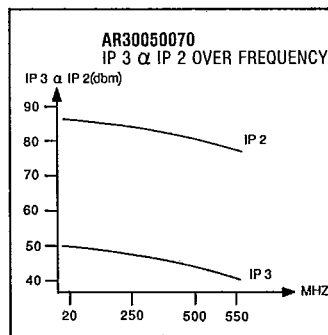
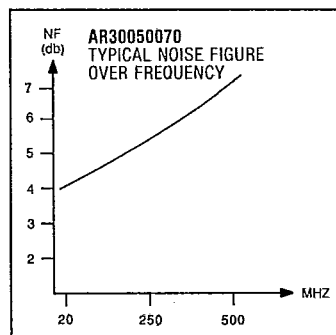
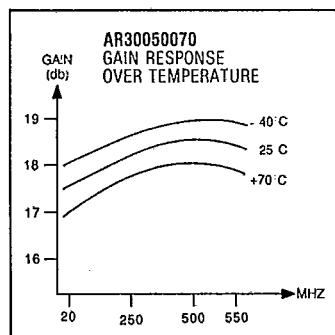
28VDC

Specifications @ 25 °C

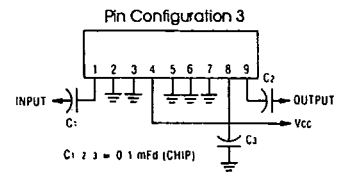
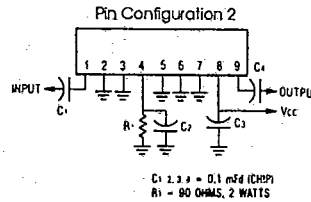
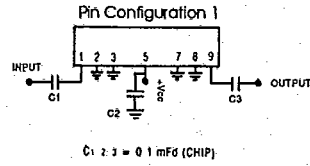
Model No.	Freq. (MHz)	IP3 (dbm) Typ.	IP2 (dbm) Typ.	Gain (db) Typ.	N.F. (db) max.	DC (ma) NOM.	P1db (dbm) min.	Outline Dwg.	Pin Config.
AR10040068	2-400	+42	+74	18	6.5	480	+32	OL1	1
AR10040070	10-300	+38	+76	16	3.9	120	+23	OL1	1
AR20040071	20-400	+45	+76	34	4.0	360	+30	OL1	1
AR10040071	20-400	+46	+80	12	6.5	250	+30	OL1	1
AR30050068	10-500	+33	+68	14	3.0	60	+17	OL2	-
AR30050040	20-500	+35	+75	10	4.5	120	+20	OL2	-
AR30050064	20-500	+38	+72	18	5.5	200	+25	OL1**	1
AR30050074	20-500	+46	+80	20	6.5	460	+32	OL1	1
AR20050070	20-500	+42	+76	34	4.5	360	+30	OL1	1
AR20050072	20-500	+43	+76	14	6.3	240	+28	OL1	1
AR30050075	20-500	+47	+80	28	4.0	600	+32	OL3	-
AR30050077	20-500	+49	+86	26	4.2	1000	+33	OL6	-
AR30050060	20-500	+43	+78	12	7.0	250	+29	OL1	1
AR30050066	20-500	+43	+78	26	3.3	300	+28	OL3	-
AR30050073	20-500	+46	+60	30	3.0	550	+32	OL3	-
AR30050069	20-500	+46	+80	18	5.8	480	+32	OL1	1
AR30050070	20-500	+47	+80	18	6.8	460	+32	OL1	1
AR30050072	20-500	+49	+98	16	7.8	960	+34	OL4	-
AR30050082	20-500	+51	+98	15	7.0	1800	+36	OL15	-
AR30050084	20-500	+51	+82	33	5.8	2200	+36	OL15	-
AR30050086	30-500	+51	+65	27	4.5	2100	+36	OL15	-

**A 64Ω, 3W Resistor must be connected in series with Vcc.

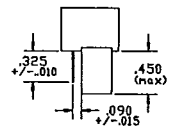
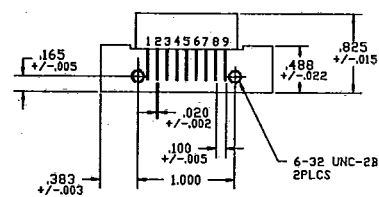
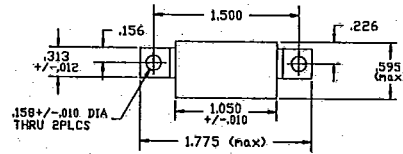
Specifications Subject To Change Without Notice



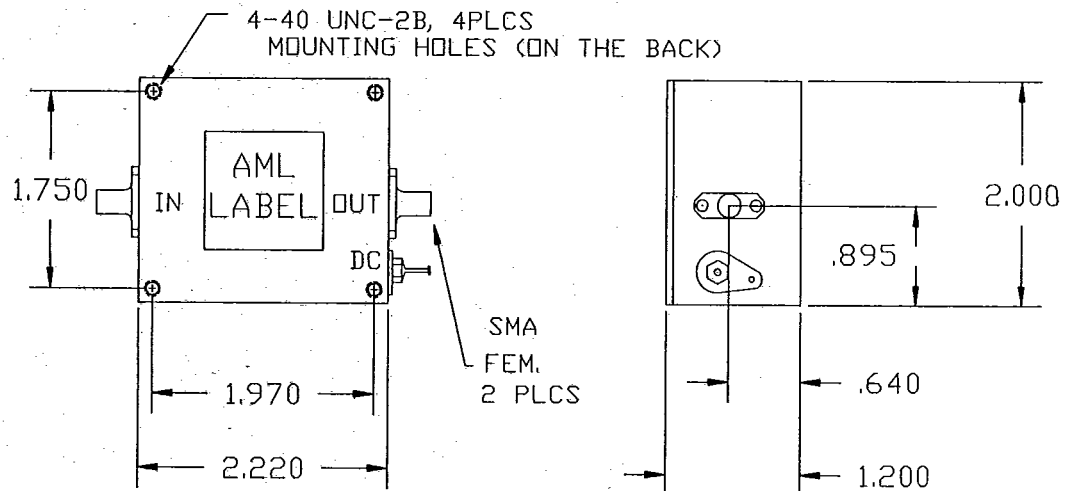
Pin Configurations



Outline Drawings



OL 1



OL 2