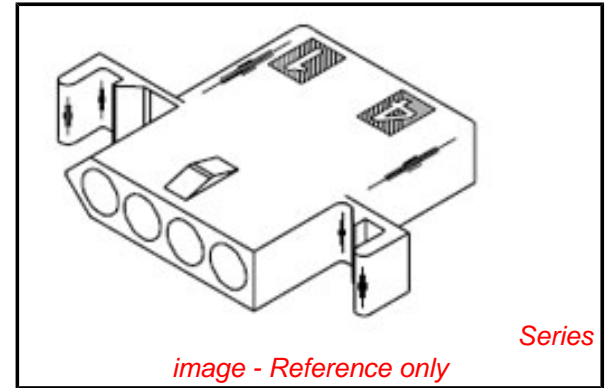


**PLEASE CHECK WWW.MOLEX.COM FOR LATEST PART INFORMATION**

**Part Number:** [0003091041](#)  
**Status:** **Active**  
**Overview:** [standard\\_093](#)  
**Description:** 2.36mm (.093") Diameter Standard .093" Pin and Socket Receptacle Housing, 4 Circuits, Single Row

**Documents:**

<a href="#">3D Model</a>	<a href="#">Product Specification PS-42477 (PDF)</a>
<a href="#">Packaging Specification (PDF)</a>	<a href="#">Product Specification PS-43660-9999 (PDF)</a>
<a href="#">Drawing (PDF)</a>	<a href="#">RoHS Certificate of Compliance (PDF)</a>
<a href="#">Product Specification PS-02-09 (PDF)</a>	



**Agency Certification**

CSA	LR19980
UL	E29179

**General**

Product Family	Crimp Housings
Series	<a href="#">1490</a>
Comments	14.0A max. can be achieved when housing is used with 42477 or 42478 terminals
MolexKits	Yes
Overview	<a href="#">standard_093</a>
Product Name	Standard .093"

**Physical**

Circuits (maximum)	4
Circuits Detail	(1 x 4)
Color - Resin	Natural
Flammability	94V-2
Gender	Dual
Glow-Wire Compliant	No
Material - Resin	Nylon
Number of Rows	1
Packaging Type	Bag
Panel Mount	Yes
Pitch - Mating Interface (in)	0.198 In
Pitch - Mating Interface (mm)	5.03 mm
Stackable	No
Temperature Range - Operating	-40°C to +105°C

**Electrical**

Current - Maximum per Contact	11A
-------------------------------	-----

**Material Info**

Old Part Number	1490-R
-----------------	--------

**Reference - Drawing Numbers**

Packaging Specification	PK-1490-001
Product Specification	PS-02-09, PS-42477, PS-43660-9999
Sales Drawing	SD-1490-*

**EU RoHS**

**ELV and RoHS Compliant**  
**REACH SVHC Contains SVHC: No**  
**Halogen-Free Status**

**China RoHS**



**Need more information on product environmental compliance?**

Email [productcompliance@molex.com](mailto:productcompliance@molex.com)  
 For a multiple part number RoHS Certificate of Compliance, [click here](#)

Please visit the [Contact Us](#) section for any non-product compliance questions.

**Search Parts in this Series**

[1490Series](#)

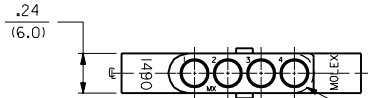
**Mates With**

[3099](#) shrouded PCB connector, [1490p](#)

**Use With**

[1189](#) Crimp Terminals, [1190](#) Crimp Terminals, [1376](#) Male PC Tail Terminals, [1377](#) Female PC Tail Terminals, [1380](#) Male Crimp Terminals, [1381](#) Female Crimp Terminals, [1433](#) Crimp Terminals, [1434](#) Male Crimp Terminals, [1973](#) , [2151](#) , [2273](#) , [2870](#) , [2871](#) , [4272](#) , [4550](#) , [6271](#) , [6310](#) , [42477](#) , [42478](#)

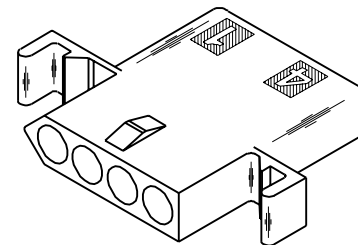
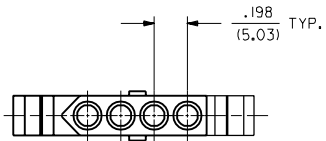
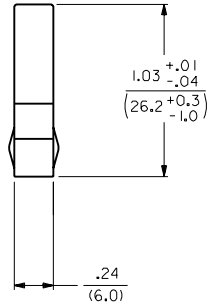
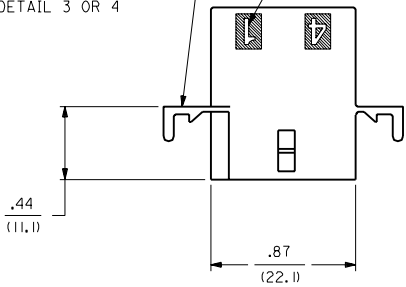
RECEPTACLE



ALTERNATE CONFIGURATION

OPTIONAL MOUNTING EAR (2 PL.)  
(STD. MOUNTING EAR SHOWN)  
SEE DETAIL 3 OR 4

CIRCUIT I.D.  $\triangle$



RECEPTACLE HOUSING

DIMENSIONS SHOWN (METRIC) INCH		$\nabla = 0$	$\blacktriangledown = 0$	REVISE ONLY ON CAD SYSTEM
UNLESS OTHERWISE SPECIFIED TOLERANCES: ANGULAR $\pm .004$ TO		TITLE		
		.093/(2.36) HOUSING, PLUG AND RECEPTACLE, 4 CKT. $\pm .198$ /(5.03) CTRS.		
		MOLEX INCORPORATED		SHEET NO. 2 DATE 3/10/88
		LITSEJLL 60532 U.S.A.		PART NO. SD-1490-*
		SEE CHART		DRWG. NO. SD-1490-*
		DRAWING FILE NAME SD1490X2.DWG		DIV. CP SIZE C

INCH	METRIC
3 PLACE $\pm .010$	---
2 PLACE $\pm .014$	$\pm 0.25$
1 PLACE ---	$\pm 0.35$

DRAFT WHERE APPLICABLE MUST REMAIN WITHIN DIMENSIONS

DRW. BY CEP	CHKD. BY RW
APP'D. BY RAS	SCALE 2 : 1

LTR.	REVISIONS	LTR.	REVISIONS

