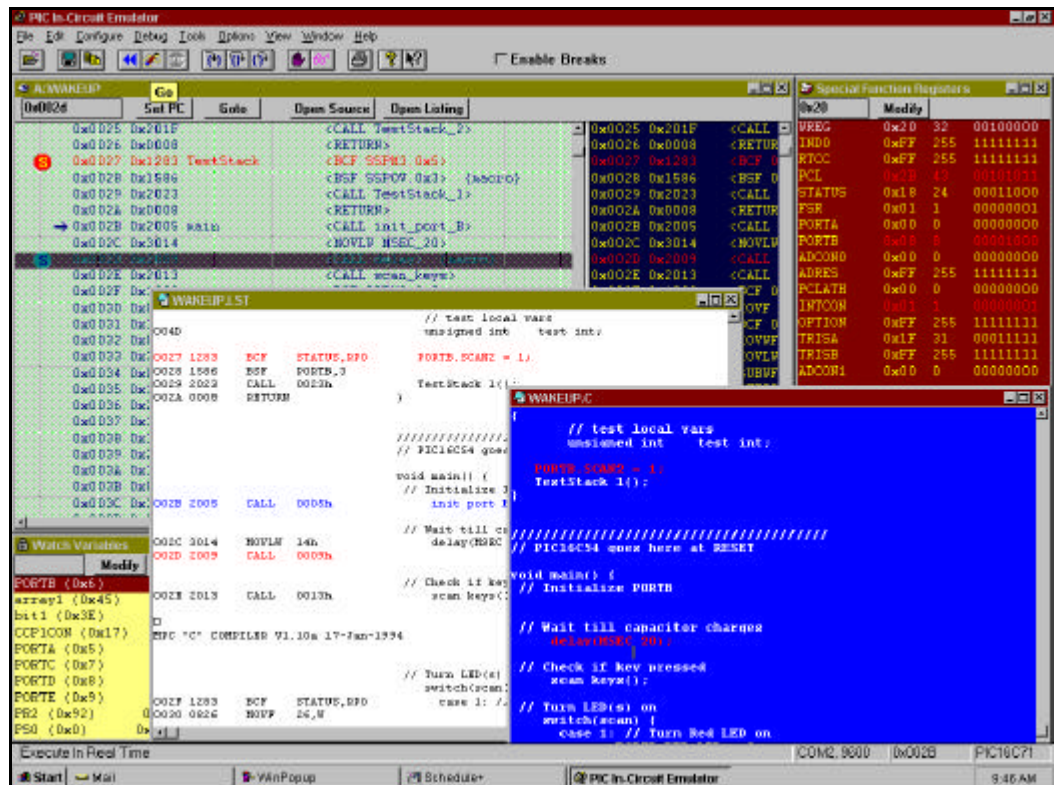


## MODULAR, REAL TIME EMULATOR SYSTEM FOR ALL PIC's



- FULL SPEED, REAL TIME EMULATION TO 33MHz.
- CAN EMULATE ALL PIC DEVICES (12CXX, 16C5X, 16CXX & 17CXX)
- SOURCE LEVEL DEBUG IN ASSEMBLER OR "C".
- 8K HARDWARE REAL TIME TRACE BUFFER.
- UNLIMITED HARDWARE "TRIGGER OUTPUTS" ON ANY ADDRESS OR ADDRESS RANGES
- HARDWARE FILTER TO CONTROL MULTI CYCLE INSTRUCTION CAPTURE.
- MICROCHIP EMULATION CHIP INSIDE!
- 16K OF 16CXX EMULATION MEMORY

- RUNS UNDER WinNT, Win98/95, & Win3.X
- THE **ONLY** 3<sup>rd</sup> PARTY EMULATOR OPERATING WITHIN MPLAB.
- SIMPLE TO USE TOOLBAR.
- UNLIMITED NUMBER OF BREAK POINTS.
- SINGLE, MULTIPLE & PROCEDURE STEP.
- DISPLAY & MODIFY ANY REGISTER (PROGRAM OR DATA).
- DISPLAY & WORK IN HEX/DEC/BIN.
- USER SELECTABLE PROCESSOR SPEEDS (VIA OSCILLATOR MODULE).
- SAME INTERFACE FOR ALL PICs
- FULL CONTEXT SENSITIVE HELP.



TECHNICAL SPECIFICATION		
FEATURES	SPECIFICATION	COMMENTS
Emulation Speed	32KHz to to 20Mhz to 33Mhz	Real Time Emulation from 32KHz to the following speeds according to the Microchip Emulation chip on the Daughterboard (DB): for DB's using PIC16C01/3 for DB's using PIC17C03 (for 17CXX series)
Emulation Memory	16K	
Real Time Trace	Circular 8k memory	Unlimited hardware trace points on any address/address ranges
Hardware Trigger Output	one	Unlimited Trigger outputs on any address/address ranges
IDE	Yes	3 Available - Microchip MPLAB interface - ICEPIC32 for Windows 95/NT - ICEPIC16 for Windows 3.X
Source Level Debug	Yes	MPASM Compatible (Microchip Assembler)
"C" Source Level Debug	Yes	Compatible with all known currently available Compilers
Freeze Mode	Yes	Peripherals run/stop when halted, software controlled
Break Points	Yes	Effectively unlimited number of Break Points
Stack Breaks	Yes	Limited by Emulator Chip (available on all 16CXX, & 17CXX)
WDT Breaks	Yes	Limited by Emulator Chip (available on all 16CXX, & 17CXX)
Stack View	Yes	Direct Stack watch window available
Custom WatchPoints	Yes	Multibyte watch points can be set and modified
Assembler Support	MPASM	Microchip Universal Assembler Support
User Interface	Windows	MS Windows NT, 98, 95, & 3.11.
Host Interface	RS-232"C"	Communications Speed up to 115Kbps
Power Supply	Supplied	International power supply. (IEC Connector)

ICEPIC2 is supplied as a system, including emulator unit, power supply, RS232 cable, full supporting documentation and software (including Microchip's MPASM). Each personality daughter boards is interchangeable with ICEPIC and ICEPIC2 (as listed below) and are available separately. New daughterboards are continually in development so please check with our sales department for the latest product availability.

EMULATOR SYSTEM	PART No
ICEPIC2 SYSTEM	ICEPIC2-SYS

For further information and demo software –

**RF Solutions Ltd,**  
**Unit 12,**  
**Cliffe Industrial Estate,**  
**Lewes,**  
**E Sussex. BN8 6JL**  
**Tel : +44 (0)1273 898 000**  
**Fax : +44 (0)1273 480 661**  
**E-mail sales@rfsolutions.co.uk**

**Web Page : <http://www.rfsolutions.co.uk>**