

PLEASE CHECK WWW.MOLEX.COM FOR LATEST PART INFORMATION

Part Number: [0010011084](#)
Status: **Active**
Overview: [kk](#)
Description: 5.08mm (.200") Pitch KK® Crimp Terminal Housing, 8 Circuits

Documents:

[3D Model](#) [Product Specification PS-99020-0087 \(PDF\)](#)
[Drawing \(PDF\)](#) [RoHS Certificate of Compliance \(PDF\)](#)

Agency Certification

CSA LR19980
 UL E29179

General

Product Family Crimp Housings
 Series [3001](#)
 Overview [kk](#)
 Product Name KK®

Physical

Circuits (maximum) 8
 Color - Resin Natural
 Flammability 94V-2
 Gender Female
 Glow-Wire Compliant No
 Material - Resin Nylon
 Number of Rows 1
 Packaging Type Bag
 Panel Mount No
 Pitch - Mating Interface (in) 0.200 In
 Pitch - Mating Interface (mm) 5.08 mm
 Temperature Range - Operating -40°C to +105°C

Solder Process Data

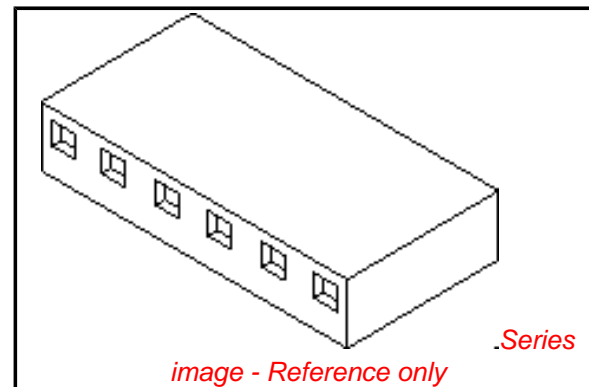
Lead-free Process Capability Wave Capable (TH only)

Material Info

Old Part Number 300108

Reference - Drawing Numbers

Product Specification PS-99020-0087
 Sales Drawing SDE-3001-N*



EU RoHS

ELV and RoHS Compliant
REACH SVHC
 Not Reviewed
Halogen-Free Status

China RoHS



Halogen-Free

Need more information on product environmental compliance?

Email productcompliance@molex.com
 For a multiple part number RoHS Certificate of Compliance, [click here](#)

Please visit the [Contact Us](#) section for any non-product compliance questions.

Search Parts in this Series

[3001Series](#)

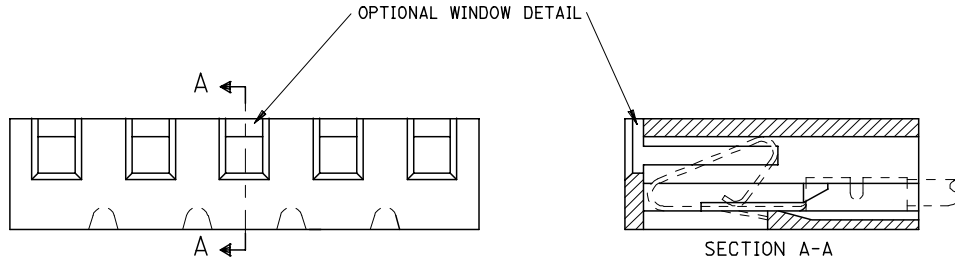
Mates With

[3061](#) , [3003](#) , [3008](#)

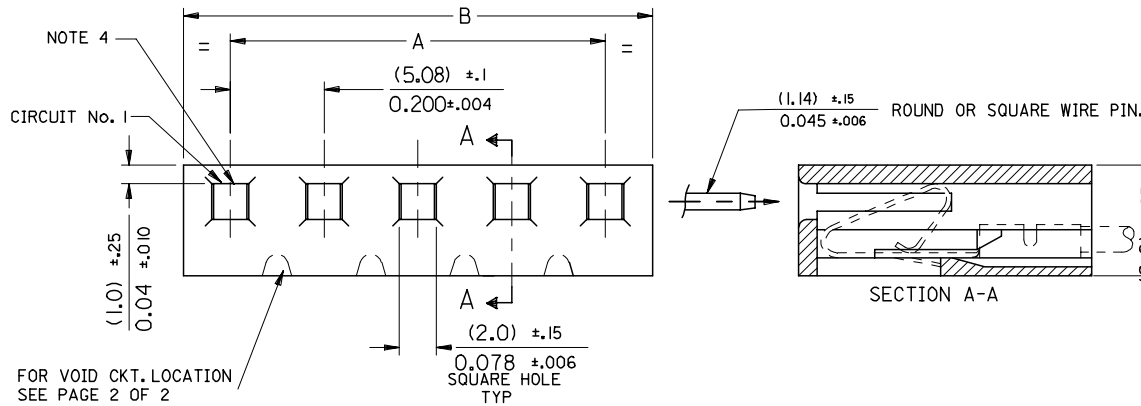
Use With

[2478](#) Crimp Terminals for 18-24 AWG, [2578](#) Crimp Terminals for 22-26 AWG, [2878](#)

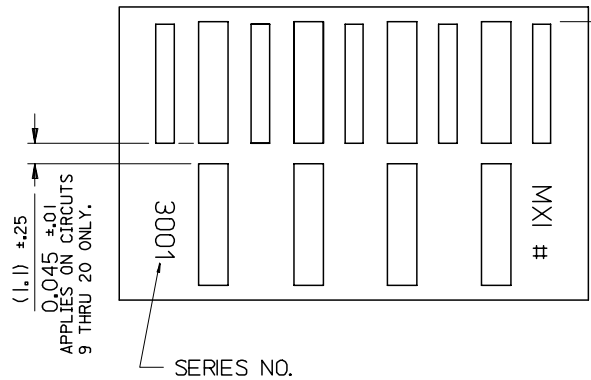
10 9 8 7 6 5 4 3 2 1



NOTE :
 1. DIMENSIONS SHOWN MILLIMETERS INCHES
 2. FOR OTHER PRODUCT SPEC'S. SEE PSX 10-39.
 3. THIS HOUSING USES KK TERM. No's. 2478, 2578 & 28



FOR VOID CKT. LOCATION SEE PAGE 2 OF 2



MAT'L: NYLON

CENTER RIB ONLY

10-01-1204	E-3001-20	3.800 ±.012	4.000 ^{+0.016} _{-0.016}	96.52 ±0.3	101.60 ^{+0.3} _{-0.3}
-1194	-19	3.600 ±.012	3.800 ^{+0.016} _{-0.016}	91.44 ±0.3	96.52 ^{+0.3} _{-0.3}
-1184	-18	3.400 ±.012	3.600 ^{+0.016} _{-0.016}	86.36 ±0.3	91.44 ^{+0.3} _{-0.3}
-1174	-17	3.200 ±.012	3.400 ^{+0.016} _{-0.016}	81.28 ±0.3	86.36 ^{+0.3} _{-0.3}
-1164	-16	3.000 ±.010	3.200 ^{+0.016} _{-0.016}	76.20 ±0.25	81.28 ^{+0.3} _{-0.3}
-1154	-15	2.800 ±.010	3.000 ^{+0.016} _{-0.016}	71.12 ±0.25	76.20 ^{+0.3} _{-0.3}
-1144	-14	2.600 ±.010	2.800 ^{+0.016} _{-0.016}	66.04 ±0.25	71.12 ^{+0.3} _{-0.3}
-1134	-13	2.400 ±.010	2.600 ^{+0.016} _{-0.016}	60.96 ±0.25	66.04 ^{+0.3} _{-0.3}
-1124	-12	2.200 ±.010	2.400 ^{+0.016} _{-0.016}	55.88 ±0.25	60.96 ^{+0.3} _{-0.3}
-1114	-11	2.000 ±.008	2.200 ^{+0.012} _{-0.012}	50.80 ±0.20	55.88 ^{+0.3} _{-0.3}
-1104	-10	1.800 ±.008	2.000 ^{+0.008} _{-0.008}	45.72 ±0.20	50.80 ^{+0.3} _{-0.3}
-1094	-9	1.600 ±.008	1.800 ^{+0.008} _{-0.008}	40.64 ±0.20	45.72 ^{+0.3} _{-0.3}
-1084	-8	1.400 ±.008	1.600 ^{+0.008} _{-0.008}	35.56 ±0.20	40.64 ^{+0.3} _{-0.3}
-1074	-7	1.200 ±.008	1.400 ^{+0.008} _{-0.008}	30.48 ±0.20	35.56 ^{+0.3} _{-0.3}
-1064	-6	1.000 ±.004	1.200 ^{+0.008} _{-0.008}	25.40 ±0.10	30.48 ^{+0.3} _{-0.3}
-1054	-5	.800 ±.004	1.000 ^{+0.006} _{-0.006}	20.32 ±0.10	25.40 ^{+0.3} _{-0.3}
-1044	-4	.600 ±.004	.800 ^{+0.006} _{-0.006}	15.24 ±0.10	20.32 ^{+0.3} _{-0.3}
-1034	-3	.400 ±.004	.600 ^{+0.006} _{-0.006}	10.16 ±0.10	15.24 ^{+0.3} _{-0.3}
-1024	-2	.200 ±.004	.400 ^{+0.006} _{-0.006}	5.08 ±0.10	10.16 ^{+0.3} _{-0.3}
10-01-1014	E-3001-1		.200 ^{+0.006} _{-0.006}		5.08 ^{+0.3} _{-0.3}
PART No.	ENG. No.	ENGLISH		METRIC	
		A	B	A	B

CORRECT TEXT LOC
 EC NO: E2007-0720
 DRWN: DNASZKI EMI CZ 2007/03/28
 CHKD: D. MOR ARTY 2007/03/29
 APPR: DENNEHY 2007/04/04

QUALITY SYMBOLS
 ▽=0
 ▽=0

GENERAL TOLERANCES (UNLESS SPECIFIED)

	mm	INCH
4 PLACES	± ---	± ---
3 PLACES	± ---	±.010
2 PLACES	± 0.25	±.014
1 PLACE	± 0.35	± ---

ANGULAR ±1/2°

DRAFT WHERE APPLICABLE MUST REMAIN WITHIN DIMENSIONS

DIMENSION STYLE
 MM/IN

DRAWN BY P. MOORE DATE 1998/09/15

CHECKED BY MGOONEY DATE 1999/03/12

APPROVED BY MWILHITE DATE 1999/03/12

MATERIAL NO. SEE CHART

SCALE 7:1

DESIGN UNITS METRIC

THIRD ANGLE PROJECTION

TITLE 5.08MM KK CRP TERM HSG

MOLEX MOLEX INCORPORATED

DOCUMENT NO. SDE-3001-N-* SHEET NO. 1 OF 1

THIS DRAWING CONTAINS INFORMATION THAT IS PROPRIETARY TO MOLEX INCORPORATED AND SHOULD NOT BE USED WITHOUT WRITTEN PERMISSION

9 8 7 6 5 4 3 2 1

