

PLEASE CHECK WWW.MOLEX.COM FOR LATEST PART INFORMATION

Part Number: [0039033157](#)
Status: **Active**
Overview: [standard_062](#)
Description: 1.57mm (.062") Diameter Standard .062" Pin and Socket Receptacle Housing, 15 Circuits, Without Mounting Ears

Documents:

[3D Model](#) [Product Specification PS-1625-010 \(PDF\)](#)
[Drawing \(PDF\)](#) [RoHS Certificate of Compliance \(PDF\)](#)
[Packaging Specification \(PDF\)](#)

Agency Certification

UL E29179

General

Product Family Crimp Housings
 Series [1625](#)
 Comments Polarized to Mating Part
 Overview [standard_062](#)
 Product Name Standard .062"

Physical

Breakaway No
 Circuits (maximum) 15
 Circuits Detail 3x5
 Color - Resin Natural
 Flammability 94V-2
 Gender Receptacle
 Glow-Wire Compliant No
 Keying to Mating Part None
 Lock to Mating Part Yes
 Material - Resin Nylon
 Number of Rows 3
 Packaging Type Bag
 Panel Mount No
 Pitch - Mating Interface (in) 0.145 In
 Pitch - Mating Interface (mm) 3.96 mm
 Pitch - Term. Interface (in) 0.145 In
 Pitch - Term. Interface (mm) 3.96 mm
 Polarized to Mating Part Yes
 Ports 15
 Stackable No
 Temperature Range - Operating -40°C to +105°C

Electrical

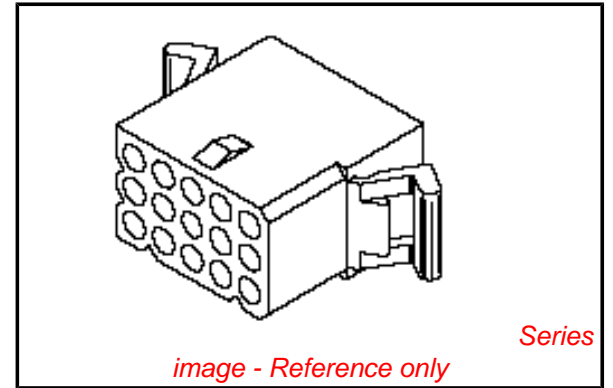
Current - Maximum per Contact 5A

Material Info

Old Part Number 1625-15R1

Reference - Drawing Numbers

Packaging Specification SPK-1625-001
 Product Specification PS-1625-010, RPS-1625-001
 Sales Drawing SD-1625-15R*



EU RoHS

ELV and RoHS Compliant
REACH SVHC Contains SVHC: No
Halogen-Free Status
Not Reviewed

China RoHS



Need more information on product environmental compliance?

Email productcompliance@molex.com
 For a multiple part number RoHS Certificate of Compliance, [click here](#)

Please visit the [Contact Us](#) section for any non-product compliance questions.

Search Parts in this Series

[1625Series](#)

Mates With

[1625 Plug](#)

Use With

Female Crimp Terminals [1561](#)[Link:4559](#), [4529](#), [2190](#), [2189](#), [1787](#), [1855](#). Male Crimp Terminals [1560](#), [1786](#), [1854](#), [1778](#). Male PC Tail Terminals. [1779](#) Female PC Tail Terminals

This document was generated on 05/19/2010

PLEASE CHECK WWW.MOLEX.COM FOR LATEST PART INFORMATION

E

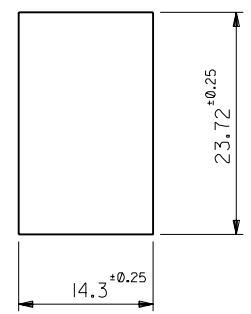
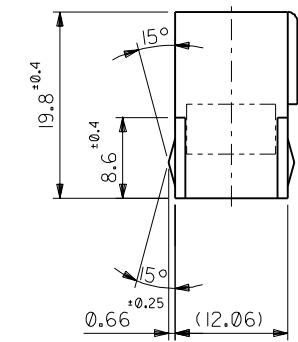
D

C

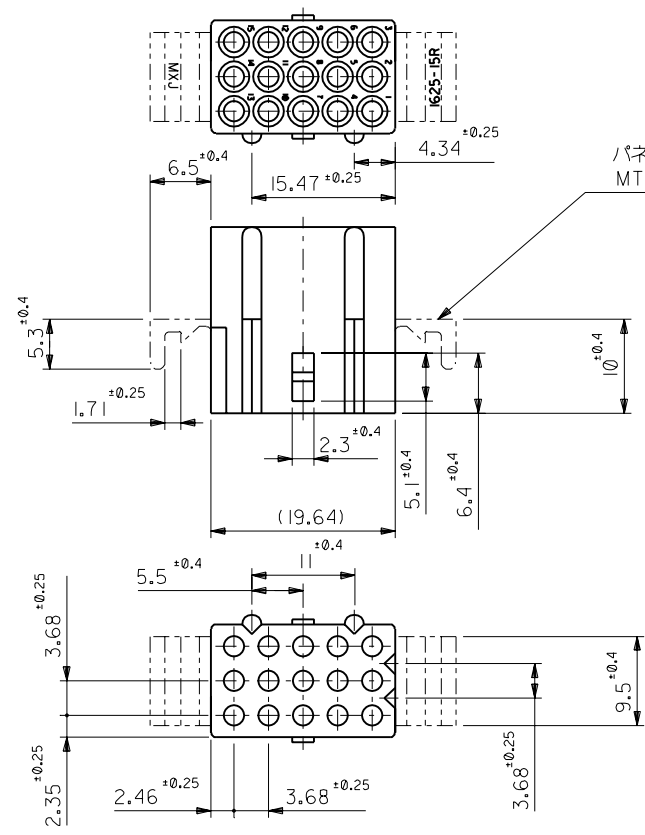
B

A

MM DIMENSIONS IN METRIC DO NOT SCALE DRAWING



パネル取付穴寸法 (厚さ 1.52最大)
RECOMMENDED PANEL HOLE DIMENSION (THK. 1.52 MAX)



パネル取付耳 (表参照)
MTG. EARS (SEE CHART)

注記
NOTE

材質: ZYTEL 101. (ナイロン66, 94V-2)
MATERIAL: ZYTEL 101. (NYLON66, 94V-2)

1625-15R1	39-03-3157	無 WITHOUT
1625-15R	39-03-3156	有 WITH
ENG. NO.	PART NO.	MTG. EARS

材料 MATERIAL		図中参照 REFER TO DRAWING	
仕上げ FINISH		—	
適用電線範囲 WIRE RANGE		—	
被覆外径 INS. RANGE		—	
DRAWN BY '96/07/03	CHK'D BY '96/07/03	DR. DATE	SCALE 2 : 1
H.IIJJIMA	M.FUKUSHIMA	M. ENOMOTO	
再作図 REDRAWN	変更内容 REVISION RECORD	DR. CHK.	DATE
UC70305			

MOLEX-JAPAN CO., LTD. 日本モレックス株式会社	
REVISE ONLY ON CAD SYSTEM	
TITLE 名称	
.062 DIA. 15 CIRCUIT RECEPT. HOUSING	
DWG. NO.	REV
SD-1625-15R*	D

角度 ANGLE	±3°
30°以上 OVER	+0.3
10°以上 30°未満 UNDER	+0.25
10°未満 UNDER	+0.2
一般公差 GENERAL TOLERANCES	