

EMI Filtering TVS For Wireless Headsets.

FEATURES

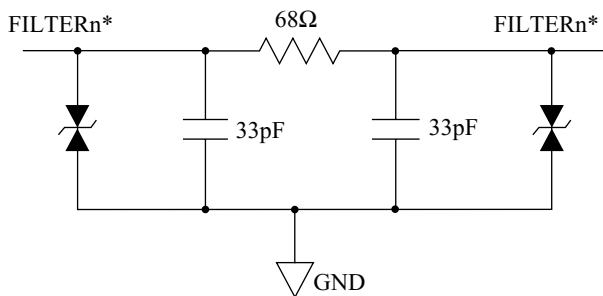
- EMI/RFI filtering.
- ESD Protection to IEC 61000-4-2 Level 4.
- Low insertion loss.
- Good attenuation of high frequency signals.
- Low clamping voltage.
- Low operating and leakage current.

MAXIMUM RATING (Ta=25 °C)

CHARACTERISTIC	SYMBOL	RATING	UNIT
DC Power Per Resistor	P_R	100	mW
Power Dissipation	$*P_D$	400	
Junction Temperature	T_j	150	°C
Storage Temperature	T_{stg}	-55 ~ 150	°C

* Total Package Power Dissipation

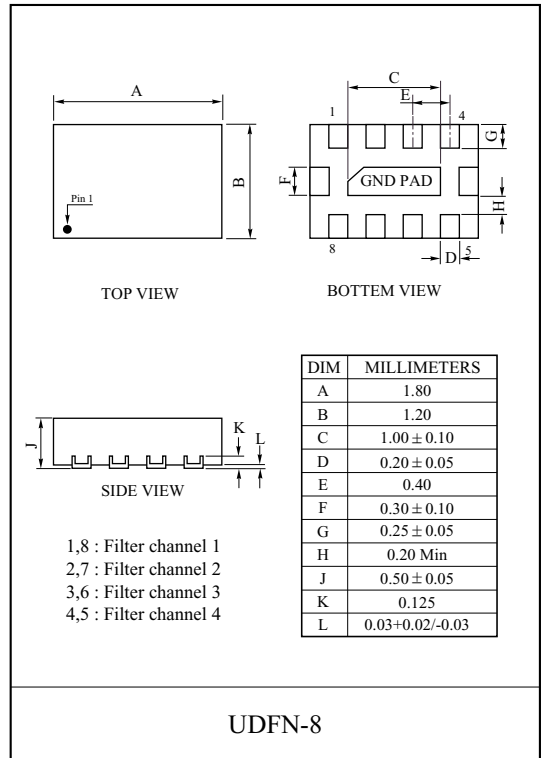
EQUIVALENT CIRCUIT



ELECTRICAL CHARACTERISTICS (Ta=25 °C)

CHARACTERISTIC	SYMBOL	TEST CONDITION	MIN.	TYP.	MAX.	UNIT
Reverse Stand-Off Voltage	V_{RWM}	-	-	-	5	V
Reverse Breakdown Voltage	V_{BR}	$I_T=1mA$	6	-	-	V
Reverse Leakage Current	I_R	$V_{RWM}=3.3V$	-	-	0.5	μA
Resistance	R	Between Input and Output	-	68	-	Ω
Capacitance	C_{0V}	$V_R=0V$, Between I/O Pins and GND	-	100	-	pF
	$C_{2.5V}$	$V_R=2.5V$, Between I/O Pins and GND	-	66	-	

TENTATIVE



MARKING

