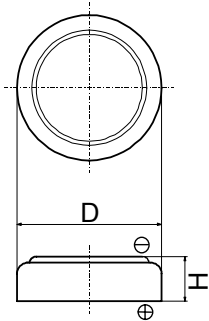


# Cell Type ML414 Specifications



Nominal Capacity <sup>*1</sup>		1.0mAh
Nominal Voltage		3V
Standard Charge/Discharge Current		0.005mA
Max. Discharge Current	Continuous <sup>*2</sup>	0.2mA
	Pulse <sup>*3</sup>	0.6mA
Charge/Discharge Cycle Characteristics	Discharging Depth of 5%	3000
	Discharging Depth of 20%	300
Charging Method	Constant Voltage Charge	3.1±0.15V
	High Temperature	2.95±0.15V
Temperature Range		-20°C~60°C
Weight		0.07g
Dimensions	Diameter(D)	4.8mm
	Height(H)	1.4mm

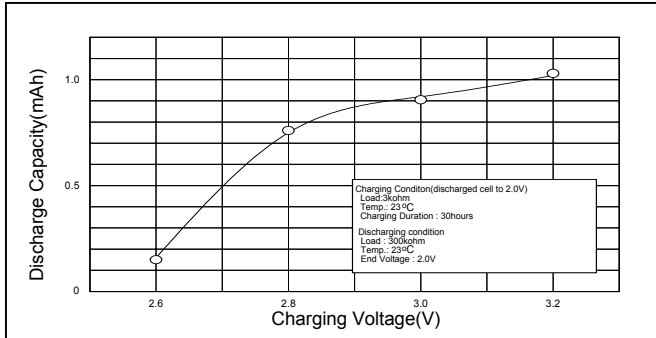
\*1 Nominal capacity is determined to an end voltage of 2.0V when the battery is allowed to discharge at a standard current level at 23°C.

\*2 Current value is determined so that 50% of the nominal capacity is obtained with an end voltage of 2.0V at 23 °C.

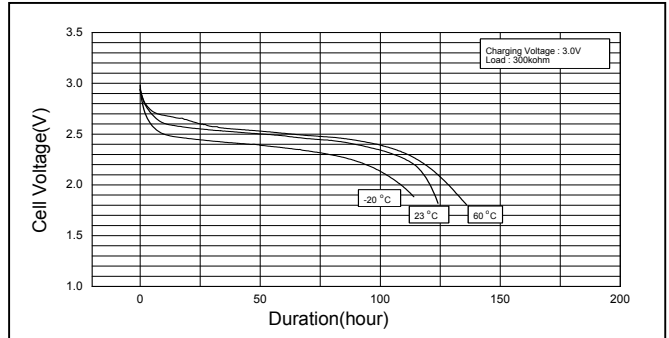
\*3 Current value for obtaining 2.0V cell voltage when 15sec. pulse is applied at 50% discharge depth at 23 °C.

## Typical Characteristics

Charging Voltage vs. Capacity of ML414



Temperature Characteristics of ML414



Discharge Characteristics after Storage of ML414

