

"High Frequency Ceramic Solutions"

2450 / 5512 MHz Diplexer

P/N 2450DP15B5512

Detail Specification: 07/21/03

Page 1 of 2

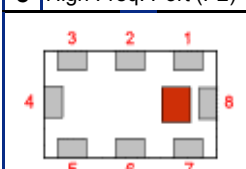
General Specifications

Part Number	2450DP15B5512	
Frequency (MHz)	2400-2500	5150-5875
Attenuation		
Low Band	0.7 dB max.	20 dB min.
Attenuation		
High Band	15 dB min.	0.9 dB max.
Pass-band Return Loss	9.5 dB min.	9.5 dB min.

Input Power	3 Watts max.
Impedance	50 Ω
Operating Temp.	-40 to +85°C
Reel Quantity	4,000

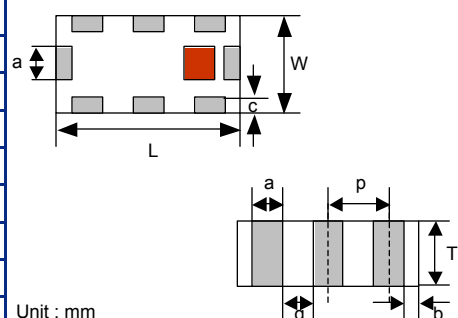
Terminal Configuration

No.	Function
1	GND
2	Common Port (P1)
3	GND
4	Low Freq. Port (P3)
5	GND
6	GND
7	GND
8	High Freq. Port (P2)



Mechanical Dimensions

	In	mm
L	0.079 ± 0.004	2.00 ± 0.10
W	0.049 ± 0.004	1.25 ± 0.10
T	0.033 ± 0.004	0.85 ± 0.10
a	0.012 ± 0.004	0.30 ± 0.10
b	0.008 ± 0.004	0.20 ± 0.10
c	0.012 +.004/-0.008	0.30 +0.1/-0.2
g	0.014 ± 0.004	0.35 ± 0.10
p	0.026 ± 0.002	0.65 ± 0.05



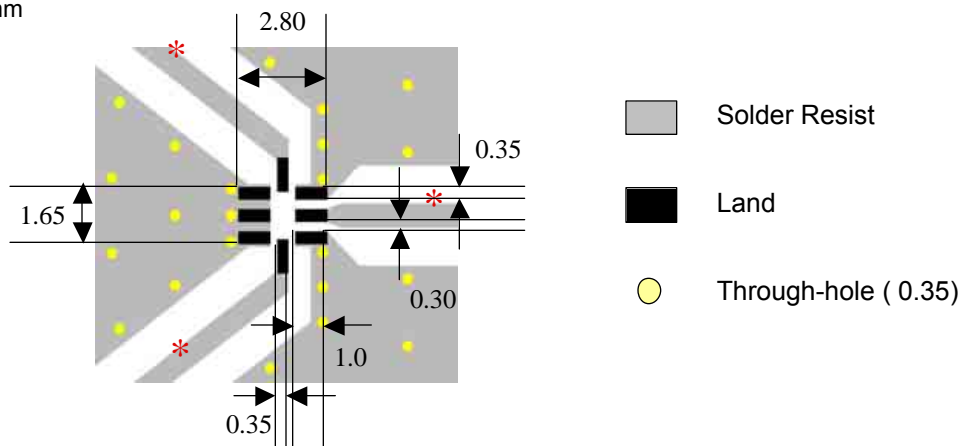
Unit : mm

Mounting Considerations

Mount these devices with brown mark facing up.

Line width should be designed to provide 50Ω impedance matching characteristics.

Units: mm



Johanson Technology, Inc. reserves the right to make design changes without notice.

All sales are subject to Johanson Technology, Inc. terms and conditions.

"High Frequency Ceramic Solutions"

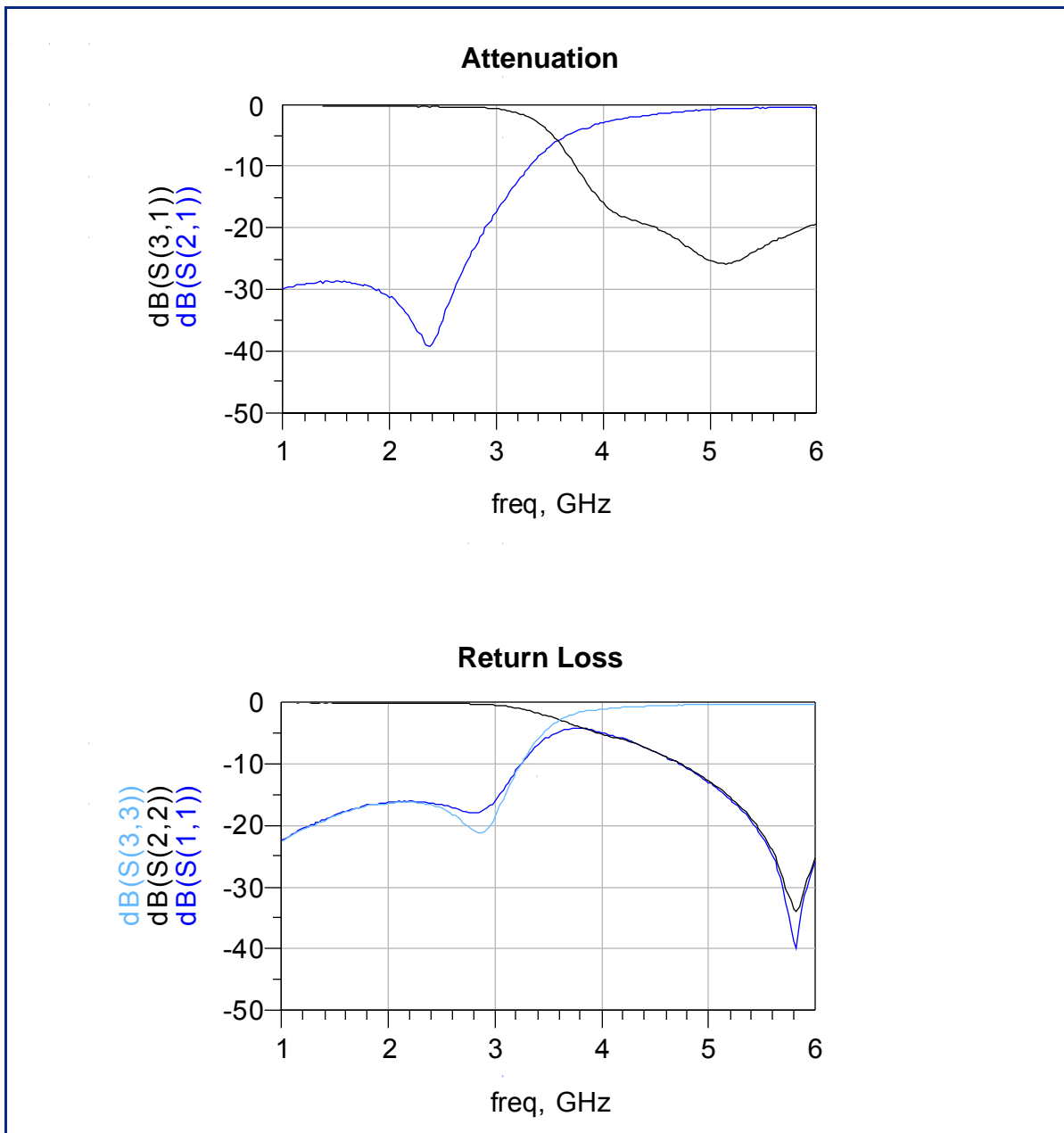
2450 / 5512 MHz Diplexer

P/N 2450DP15B5512

Detail Specification: 07/21/03

Page 2 of 2

Typical Electrical Performance



Johanson Technology, Inc. reserves the right to make design changes without notice.

All sales are subject to Johanson Technology, Inc. terms and conditions.

