



**SEMITOP® 2**

## IGBT Module

**SK20GH065**

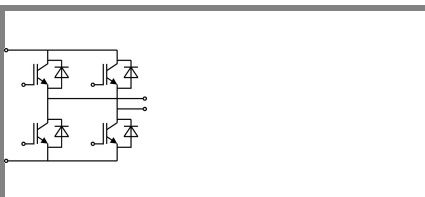
Preliminary Data

### Features

- Compact design
- One screw mounting
- Heat transfer and isolation through direct copper bonded aluminium oxide ceramic (DCB)
- N-channel homogeneous Silicon structure (NPT-NonPunchThrough IGBT)
- High short circuit capability
- Low tail current with low temperature dependence
- UL recognized, file no E63532

### Typical Applications\*

- Switching (not for linear use)
- Inverter
- Switched mode power supplies
- UPS



GH

Absolute Maximum Ratings		$T_s = 25\text{ }^\circ\text{C}$ , unless otherwise specified	
Symbol	Conditions	Values	Units
<b>IGBT</b>			
$V_{CES}$	$T_j = 25\text{ }^\circ\text{C}$	600	V
$I_C$	$T_j = 125\text{ }^\circ\text{C}$	$T_s = 25\text{ }^\circ\text{C}$	24 A
		$T_s = 80\text{ }^\circ\text{C}$	18 A
$I_{CRM}$	$I_{CRM} = 2 \times I_{Cnom}$	40	A
$V_{GES}$		$\pm 20$	V
$t_{psc}$	$V_{CC} = 300\text{ V}; V_{GE} \leq 20\text{ V}; T_j = 125\text{ }^\circ\text{C}$ $V_{CES} < 600\text{ V}$	10	$\mu\text{s}$
<b>Inverse Diode</b>			
$I_F$	$T_j = 125\text{ }^\circ\text{C}$	$T_s = 25\text{ }^\circ\text{C}$	25 A
		$T_s = 80\text{ }^\circ\text{C}$	18 A
$I_{FRM}$	$I_{FRM} = 2 \times I_{Fnom}$	40	A
<b>Module</b>			
$I_{t(RMS)}$			A
$T_{vj}$		-40 ... +150	$^\circ\text{C}$
$T_{stg}$		-40 ... +125	$^\circ\text{C}$
$V_{isol}$	AC, 1 min.	2500	V

Characteristics		$T_s = 25\text{ }^\circ\text{C}$ , unless otherwise specified			
Symbol	Conditions	min.	typ.	max.	Units
<b>IGBT</b>					
$V_{GE(th)}$	$V_{GE} = V_{CE}, I_C = 0,5\text{ mA}$	3	4	5	V
$I_{CES}$	$V_{GE} = 0\text{ V}, V_{CE} = V_{CES}, T_j = 25\text{ }^\circ\text{C}$			0,07	mA
$I_{GES}$	$V_{CE} = 0\text{ V}, V_{GE} = 20\text{ V}, T_j = 25\text{ }^\circ\text{C}$			120	nA
$V_{CE0}$		$T_j = 25\text{ }^\circ\text{C}$	1		V
		$T_j = 125\text{ }^\circ\text{C}$	1,1		V
$r_{CE}$	$V_{GE} = 15\text{ V}$	$T_j = 25\text{ }^\circ\text{C}$			m $\Omega$
		$T_j = 125\text{ }^\circ\text{C}$		55	m $\Omega$
$V_{CE(sat)}$	$I_{Cnom} = 20\text{ A}, V_{GE} = 15\text{ V}$	$T_j = 25\text{ }^\circ\text{C}_{chiplev.}$	2		V
		$T_j = 125\text{ }^\circ\text{C}_{chiplev.}$	2,2		V
$C_{res}$	$V_{CE} = 25, V_{GE} = 0\text{ V}, f = 1\text{ MHz}$		1,1		nF
$C_{oes}$		0,107		nF	
$C_{res}$		0,063		nF	
$t_{d(on)}$	$R_{Gon} = 30\text{ }\Omega$	$V_{CC} = 300\text{ V}$ $I_C = 20\text{ A}$	21		ns
$t_r$			28		ns
$E_{on}$	$R_{Goff} = 30\text{ }\Omega$	$T_j = 125\text{ }^\circ\text{C}$ $V_{GE} = \pm 15\text{ V}$	0,6		mJ
$t_{d(off)}$			170		ns
$t_f$			20		ns
$E_{off}$			0,4		mJ
$R_{th(j-s)}$	per IGBT			1,7	K/W



**SEMITOP® 2**

## IGBT Module

**SK20GH065**

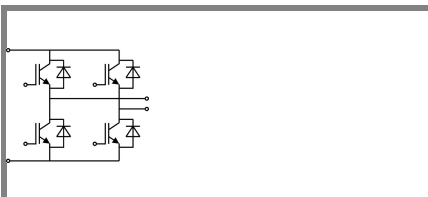
Preliminary Data

### Features

- Compact design
- One screw mounting
- Heat transfer and isolation through direct copper bonded aluminium oxide ceramic (DCB)
- N-channel homogeneous Silicon structure (NPT-NonPunchThrough IGBT)
- High short circuit capability
- Low tail current with low temperature dependence
- UL recognized, file no E63532

### Typical Applications\*

- Switching (not for linear use)
- Inverter
- Switched mode power supplies
- UPS



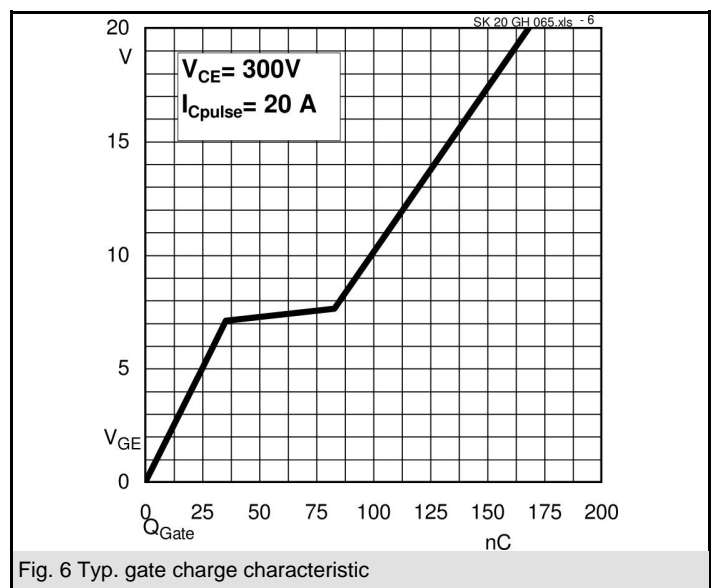
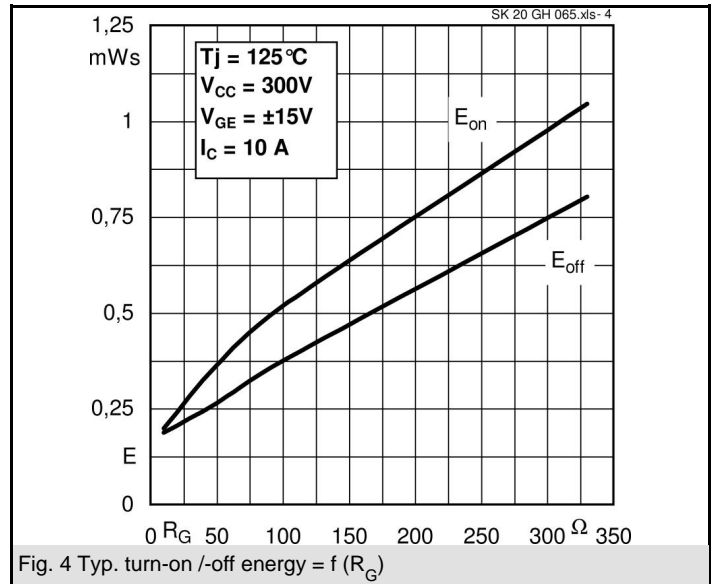
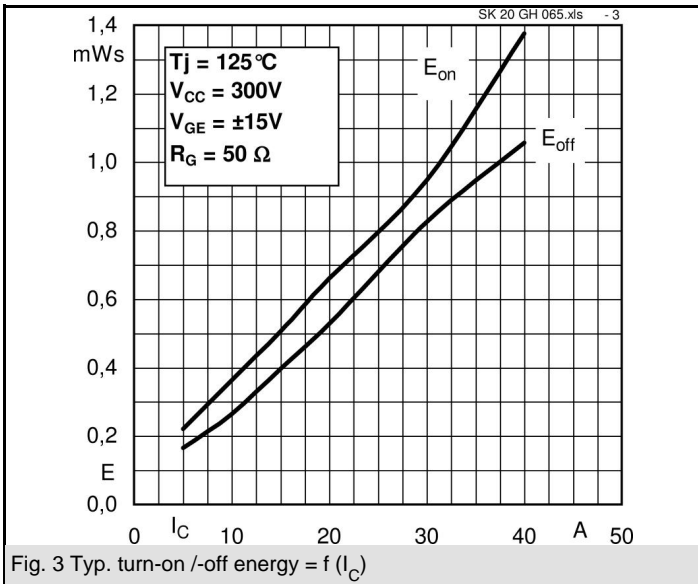
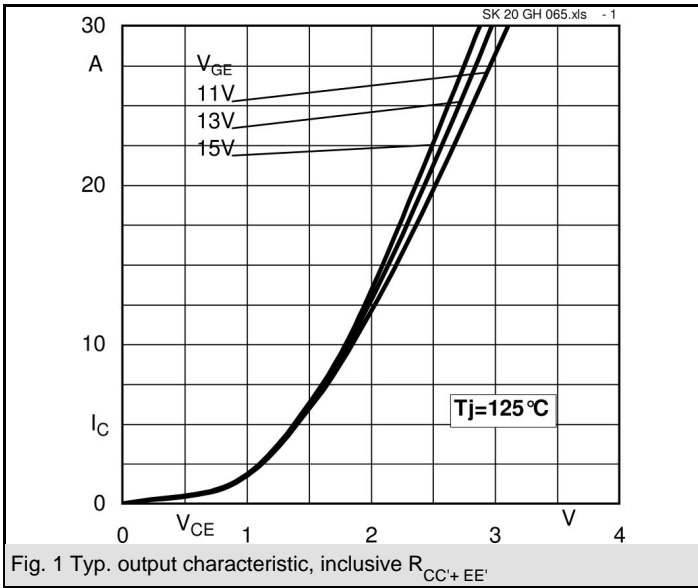
GH

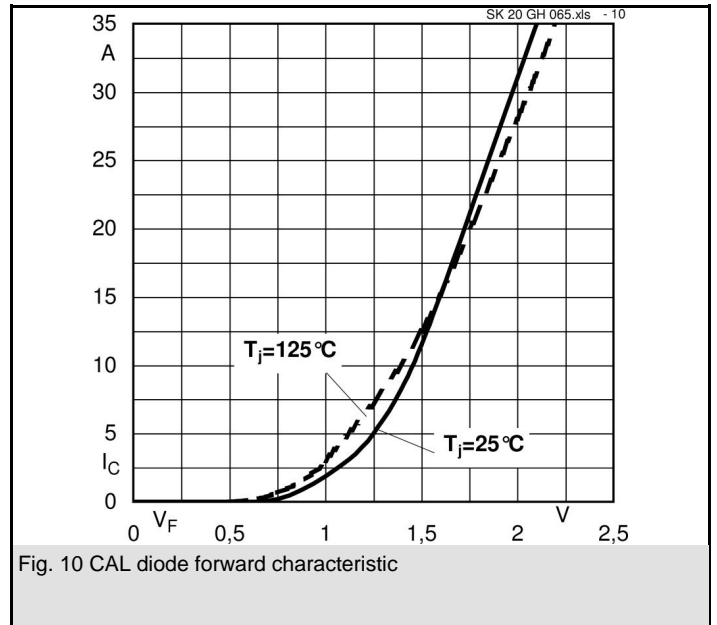
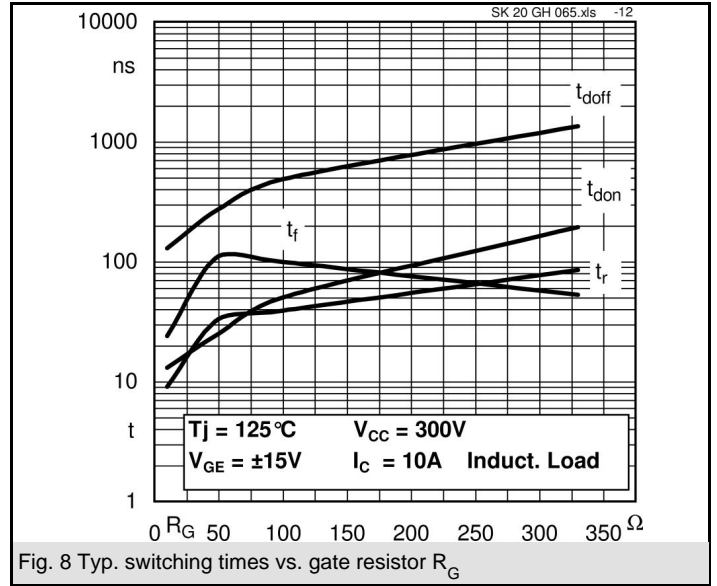
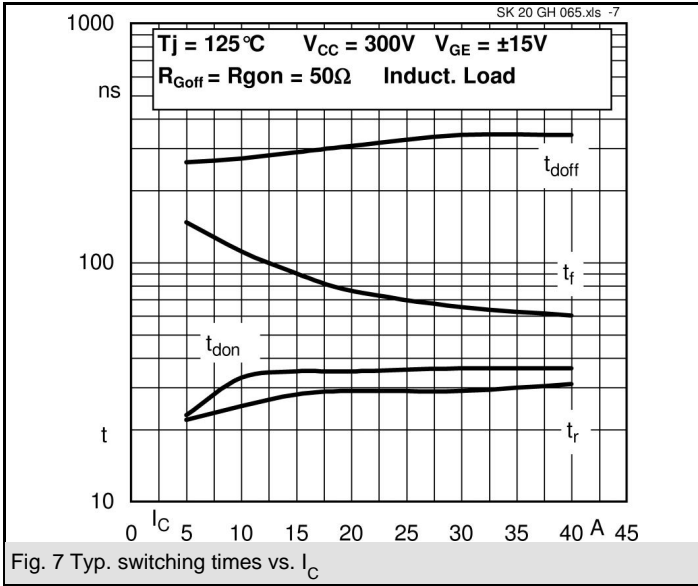
### Characteristics

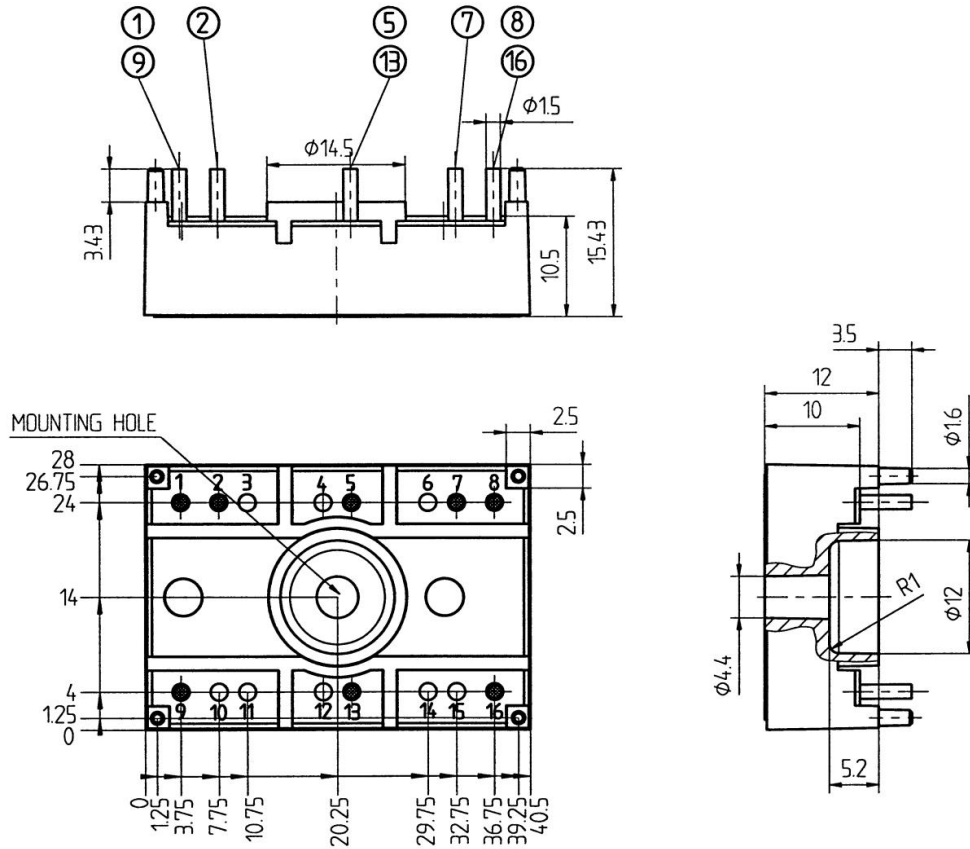
Symbol	Conditions	min.	typ.	max.	Units
<b>Inverse Diode</b>					
$V_F = V_{EC}$	$I_{Fnom} = 20 \text{ A}; V_{GE} = 0 \text{ V}$		$T_j = 25 \text{ }^\circ\text{C}_{\text{chiplev.}}$	1,6	V
			$T_j = 125 \text{ }^\circ\text{C}_{\text{chiplev.}}$	1,6	V
$V_{F0}$			$T_j = 25 \text{ }^\circ\text{C}$		V
			$T_j = 125 \text{ }^\circ\text{C}$	0,9	V
$r_F$			$T_j = 25 \text{ }^\circ\text{C}$	30	mΩ
			$T_j = 125 \text{ }^\circ\text{C}$	33	mΩ
$I_{RRM}$	$I_F = \text{A}$		$T_j = 125 \text{ }^\circ\text{C}$		A
$Q_{rr}$					μC
$E_{rr}$	$V_R = 300\text{V}$				mJ
$R_{th(j-s)D}$	per diode			1,7	K/W
$M_s$	to heat sink			2	Nm
w			19		g

This is an electrostatic discharge sensitive device (ESDS), international standard IEC 60747-1, Chapter IX.

\* The specifications of our components may not be considered as an assurance of component characteristics. Components have to be tested for the respective application. Adjustments may be necessary. The use of SEMIKRON products in life support appliances and systems is subject to prior specification and written approval by SEMIKRON. We therefore strongly recommend prior consultation of our personal.







Case T5 (Suggested hole diameter, in the PCB, for solder pins and plastic mounting pins: 2mm)

