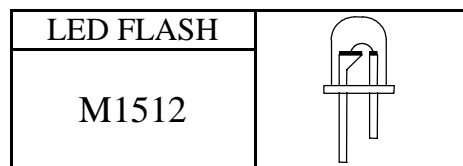




8 FUNCTIONS  
5 LED FLASH IC

八段功能  
5 LED 闪烁 IC



**FEATURES 功能叙述**

- VDD Control.
- Built-in / Ext.Rosc.
- 1 key operation, into ROM by changing on mask.
- LED pattern will be programmed.
- Auto: Floating — 8 section auto scan.  
VSS — Change section by “TG” key.

No. M1512

- 1 单灯来回闪
- 2 双灯来回闪
- 3 连亮
- 4 连灭
- 5 由外向内来回闪
- 6 全闪
- 7 连亮连灭
- 8 渐明渐暗

**APPLICATION 产品应用**

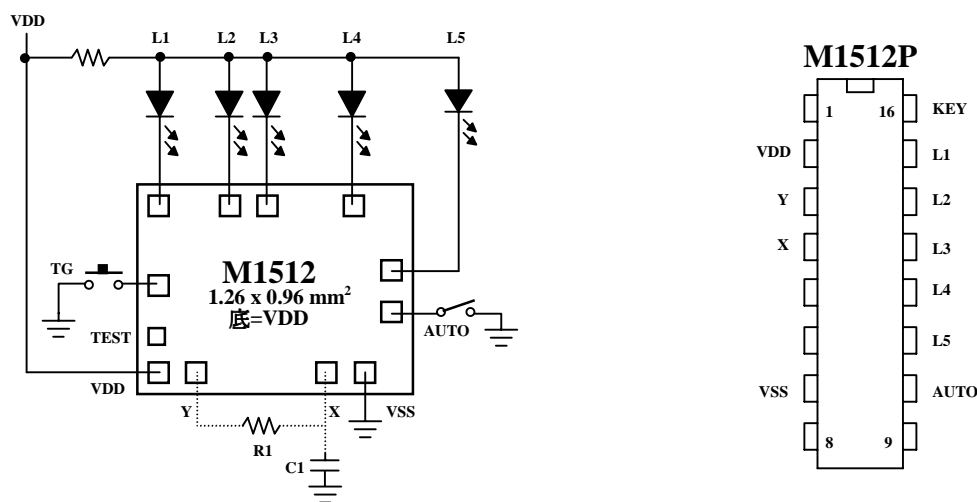
- Disco broaches, Blinking LED, Shoe IC etc..

**ELECTRICAL CHARACTERISTICS 电气规格**

( @V<sub>DD</sub>=3V unless otherwise specified )

Characteristics	Sym.	Min.	Typ.	Max.	Unit	REMARKS
工作电压 Operating Voltage	V <sub>DD</sub>	—	3	3.5	V	
工作电流 Operating Current	I <sub>OP</sub>	—	0.1	0.5	mA	No load
推动电流 Driving Current	I <sub>OL</sub>	20	—	—	mA	@ V <sub>DS</sub> =1.2V
振荡频率 Oscillator Frequency	F <sub>OSC</sub>	—	64	—	KHz	±30% TOL., R <sub>osc</sub> =K Ω
工作温度 Operating Temperature	Temp.	0	25	60	°C	

**APPLICATION DIAGRAM 参考电路图**



\* External C1 (10 ~ 100 pf to VSS): decrease the Fosc.

\* External R1: increase the Fosc.

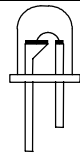
\*All specs and applications shown above subject to change without prior notice.

( 以上电路及规格仅供参考,本公司得径行修正 )

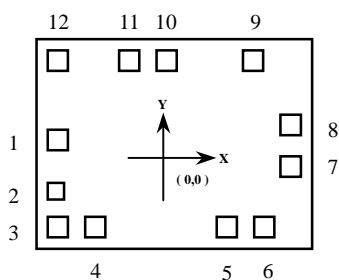


8 FUNCTIONS  
5 LED FLASH IC

八段功能  
5 LED 闪烁 IC

LED FLASH	
M1512	

**PAD ASSIGNMENT&POSITION**



Unit : um			
NO	NAME	X	Y
1	TG	-505.75	15.5
2	TEST	-505.75	-206.25
3	VDD	-505.75	-359
4	Y	-340.75	-359
5	X	240.5	-359
6	VSS	400.5	-359
7	AUTO	505	-95.75
8	L5	505	76.25
9	L4	340.25	352.75
10	L3	-35.75	352.75
11	L2	-195.75	352.75
12	L1	-505.75	352.75

\* CHIP SIZE ~ 1.26 X 0.96 mm<sup>2</sup>

\* IC substrate should be connected to VDD in PCB (PCB 上 IC 必须接 VDD)

( 以上电路及规格仅供参考,本公司得径行修正 )