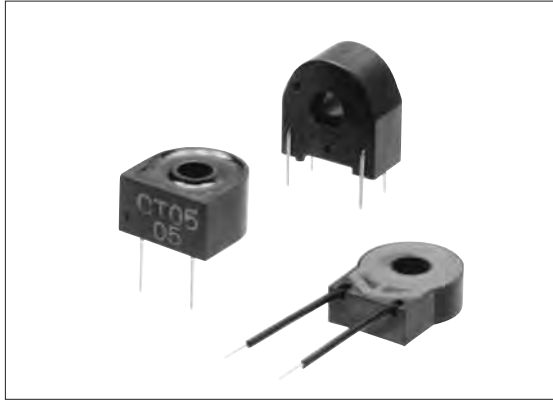


Current Transformers Low Current Type



Outline

This series of compact current transformers (current sensors) can be used for detecting very low current levels and overcurrent protection in electronic appliances.

Features

- High sensitivity (detection of low current) and high performance.
- Compact, lightweight.
- Mountable on printed circuit boards.

Applications

- Overcurrent detection in microcomputer-controlled equipment.
- Current detection in electric refrigerators, air conditioners and electromagnetic cookers.

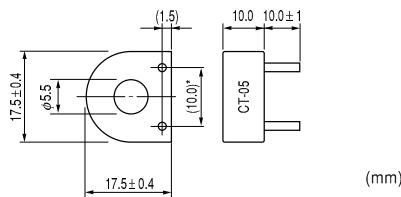
Specifications

Product name	CT-05	CT-06	CT-07
Core	Permalloy	Permalloy	Permalloy
Lead wires	φ0.6 mm Pin connectors	Polyethylene sheath φ0.5 mm single wire	φ0.8 mm Pin connectors
Materials	Phenolic resin case, epoxy-filled	Phenolic resin case, silicon-filled	Phenolic resin case, epoxy-filled
Remarks	Compliance to RoHS directive	Compliance to RoHS directive	Compliance to RoHS directive

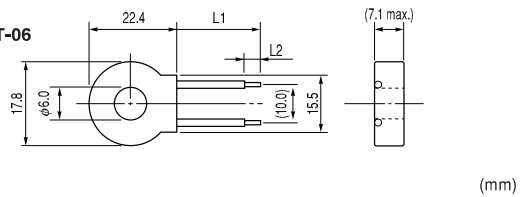
- Notes: (1) The CT-05 has 500^T as standard.
 (2) In the standard lineup there are three types of CT-06, depending on differences in secondary windings.
 (3) In the standard lineup there are two types of CT-07, depending on differences in secondary windings.

Shape and Dimensions

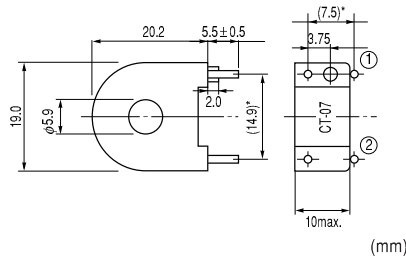
● CT-05



● CT-06



● CT-07



Product name	L1(±5)	L2(±2)
CT-06-50	56.0	4.0
CT-06-75	85.0	5.0

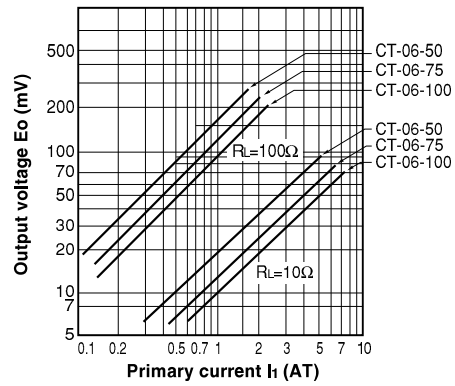
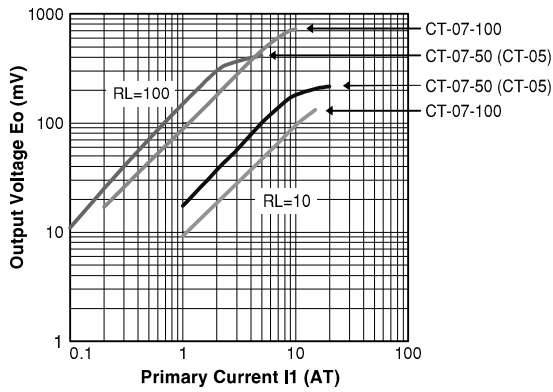
- * Tolerance ±0.3
- * Pin root diameter.



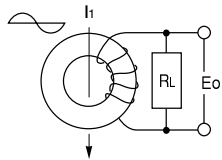
- All specifications in this catalog and production status of products are subject to change without notice. Prior to the purchase, please contact NEC TOKIN for updated product data.
- Please request for a specification sheet for detailed product data prior to the purchase.
- Before using the product in this catalog, please read "Precautions" and other safety precautions listed in the printed version catalog.

Output Characteristics

- CT-05, CT-07 AC output characteristics (example)
- CT-06 AC output characteristics (example)



Measuring circuit



I_1 : Primary current (AT)
 R_L : Load resistance (Ω)
 E_o : Output voltage (mV rms)

Before Using Current Transformers Low Current Type

- The core may be damaged if applied with a strong impact. Carefully avoid dropping or applying any other strong impacts.
- Preliminary study is needed with regard to heating by current conduction.
- Do not use the current transformer opened between secondary output terminals.
 In the worst case, heat build-up in the magnetic core may occur, resulting in damages to the parts by the melting of coil due to this heat.



● All specifications in this catalog and production status of products are subject to change without notice. Prior to the purchase, please contact NEC TOKIN for updated product data.
 ● Please request for a specification sheet for detailed product data prior to the purchase.
 ● Before using the product in this catalog, please read "Precautions" and other safety precautions listed in the printed version catalog.