

1240A • 1241A

T-52-09-00



DM74ALS1240A/DM74ALS1241A Octal TRI-STATE® Bus Driver

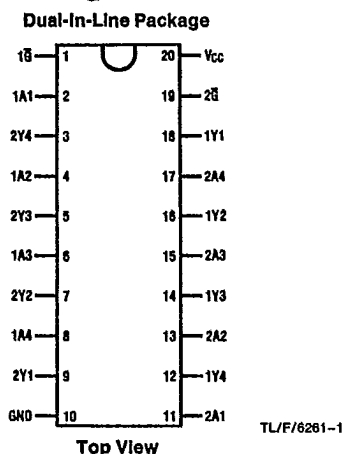
General Description

These octal TRI-STATE bus drivers are designed to provide the designer with flexibility in implementing a bus interface with memory, microprocessor, or communication systems, and are low power dissipation versions of the 'ALS240 and 'ALS241. The output TRI-STATE gating control is organized into two separate groups of four buffers. The 'ALS1240 control inputs symmetrically enable the respective outputs when set logic low, while the 'ALS1241A has complementary enable gating. The TRI-STATE circuitry contains a feature that maintains the buffer outputs in TRI-STATE (high impedance state) during power supply ramp-up or ramp-down. This eliminates bus glitching problems that arise during power-up and power-down.

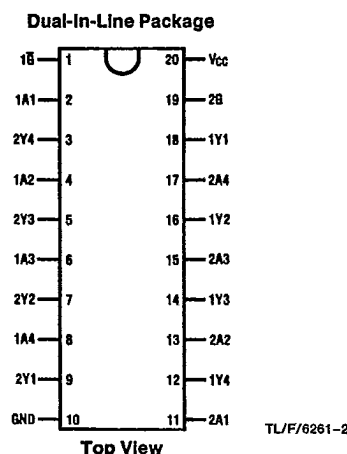
Features

- Advanced oxide-isolated, ion-implanted Schottky TTL process
- Switching response specified into 500Ω and 50 pF load
- Switching response specifications guaranteed over full temperature and V_{CC} supply range
- PNP input design reduces input loading
- Low power dissipation version of the DM54/74ALS240, 241
- Low level drive current: 74ALS= 16 mA

Connection Diagrams



Top View
Order Number DM74ALS1240AWM
or DM74ALS1240AN
See NS Package Number M20B or N20A



Top View
Order Number DM74ALS1241AWM
or DM74ALS1241AN
See NS Package Number M20B or N20A

Function Tables

'ALS1240A

Input		Output
\bar{G}	A	Y
L	L	H
L	H	L
H	X	Z

'ALS1241A

Input		Output
2G	2A	Y
H	L	L
H	H	H
L	X	Z

'ALS1241A

Input		Output
1G	1A	Y
L	L	L
L	H	H
H	X	Z

H = High Level Logic State L = Low Level Logic State X = Don't Care (Either Low or High Level Logic State) Z = High Impedance (Off) State

T-52-09

1240A • 1241A

Absolute Maximum Ratings

Supply Voltage	7V
Input Voltage	7V
Voltage Applied to Disabled Output	5.5V
Operating Free Air Temperature Range DM74ALS	0°C to +70°C
Storage Temperature Range	-65°C to +150°C
Typical θ_{JA}	
N Package	60.5°C/W
M Package	78.0°C/W

Note: The "Absolute Maximum Ratings" are those values beyond which the safety of the device cannot be guaranteed. The device should not be operated at these limits. The parametric values defined in the "Electrical Characteristics" table are not guaranteed at the absolute maximum ratings. The "Recommended Operating Conditions" table will define the conditions for actual device operation.

Recommended Operating Conditions

Symbol	Parameter	DM74ALS1240A DM74ALS1241A			Units
		Min	Typ	Max	
V _{CC}	Supply Voltage	4.5	5	5.5	V
V _{IH}	High Level Input Voltage	2			V
V _{IL}	Low Level Input Voltage			0.8	V
I _{OH}	High Level Output Current			-15	mA
I _{OL}	Low Level Output Current			16	mA
T _A	Operating Free Air Temperature	0		70	°C

Electrical Characteristics

over recommended operating free air temperature range (unless otherwise specified)

Symbol	Parameter	Conditions	Min	Typ	Max	Units
V _{IK}	Input Clamp Voltage	V _{CC} = 4.5V, I _I = -18 mA			-1.2	V
V _{OH}	High Level Output Voltage	V _{CC} = 4.5V to 5.5V, I _{OH} = -0.4 mA	V _{CC} - 2			V
		V _{CC} = 4.5V	I _{OH} = -3 mA	2.4		V
			I _{OH} = Max	2		V
V _{OL}	Low Level Output Voltage	V _{CC} = 4.5V	I _{OL} = 12 mA	0.25	0.4	V
			I _{OL} = 24 mA	0.35	0.5	V
I _I	Input Current at Max Input Voltage	V _{CC} = 5.5V, V _I = 7V			0.1	mA
I _{IH}	High Level Input Current	V _{CC} = 5.5V, V _I = 2.7V			20	μA
I _{IL}	Low Level Input Current	V _{CC} = 5.5V, V _{IL} = 0.4V			-0.1	mA
I _O	Output Drive Current	V _{CC} = 5.5V, V _O = 2.25V	-30		-112	mA
I _{OZH}	High Level TRI-STATE Output Current	V _{CC} = 5.5V, V _O = 2.7V			20	μA
I _{OZL}	Low Level TRI-STATE Output Current	V _{CC} = 5.5V, V _O = 0.4V			-20	μA
I _{CC}	Supply Current	V _{CC} = 5.5V, ALS1240 Outputs High		5	8	mA
				8	14	mA
				8	13	mA
		V _{CC} = 5.5V, ALS1241 Outputs High		7	11	mA
				10	15	mA
				11	17	mA



1240A • 1241A

T-52-09

'ALS1240A Switching Characteristics

over recommended operating free air temperature range (see Section 1 for Test Waveforms and Output Load)

Symbol	Parameter	From (Input)	To (Output)	V _{CC} = 4.5V to 5.5V, C _L = 50 pF, R ₁ = 500Ω, R ₂ = 500Ω, T _A = Min to Max		Units
				DM74ALS1240A		
				Min	Max	
t _{PLH}	Propagation Delay Time Low to High Level Output	A	Y	2	13	ns
t _{PHL}	Propagation Delay Time High to Low Level Output			2	13	ns
t _{PZH}	Output Enable Time to High Level Output	G	Y	4	20	ns
t _{PZL}	Output Enable Time to Low Level Output			6	22	ns
t _{PHZ}	Output Disable Time from High Level Output	G	Y	2	10	ns
t _{PLZ}	Output Disable Time from Low Level Output			3	13	ns

'ALS1241A Switching Characteristics

over recommended operating free-air temperature range (see Section 1 for Test Waveforms and Output Load)

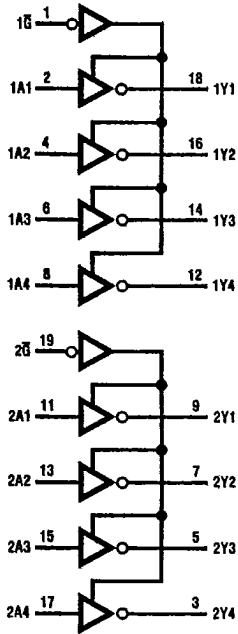
Symbol	Parameter	From (Input)	To (Output)	V _{CC} = 4.5V to 5.5V, C _L = 50 pF, R ₁ = 500Ω, R ₂ = 500Ω, T _A = Min to Max		Units
				DM74ALS1241A		
				Min	Max	
t _{PLH}	Propagation Delay Time Low to High Level Output	A	Y	3	11	ns
t _{PHL}	Propagation Delay Time High to Low Level Output			3	12	ns
t _{PZH}	Output Enable Time to High Level Output	G or G	Y	6	21	ns
t _{PZL}	Output Enable Time to Low Level Output			6	21	ns
t _{PHZ}	Output Disable Time from High Level Output	G or G	Y	2	11	ns
t _{PLZ}	Output Disable Time from Low Level Output			3	16	ns

Logic Diagrams

T-52-09

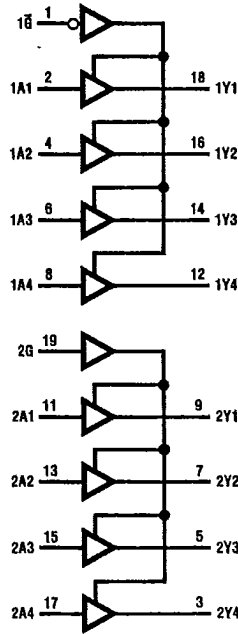
1240A • 1241A

ALS1240A



TL/F/6261-3

ALS1241A



TL/F/6261-4

2