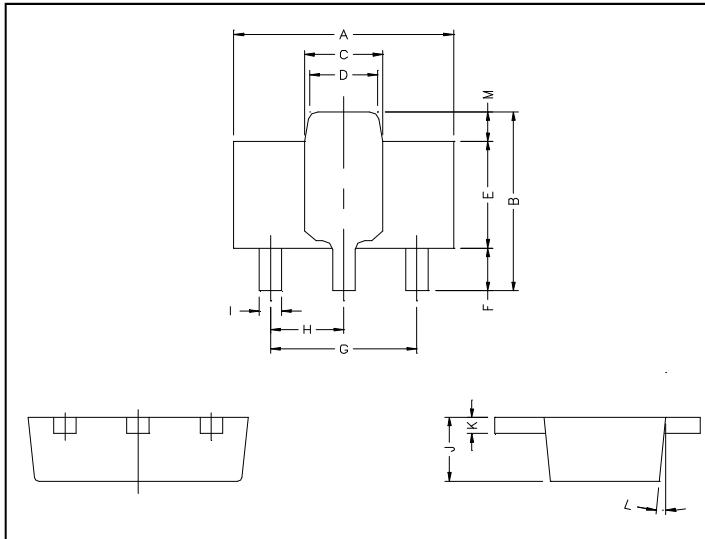


GMA42

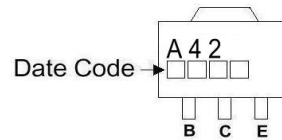
NPN EPITAXIAL PLANAR TRANSISTOR

Description

The GMA42 is designed for application as a video output to drive color CRT ,or as a dialer circuit in electronics telephone.



Marking :



EF.	Millimeter		REF.	Millimeter	
	Min.	Max.		Min.	Max.
A	4.4	4.6	G	3.00	REF.
B	4.05	4.25	H	1.50	REF.
C	1.50	1.70	I	0.40	0.52
D	1.30	1.50	J	1.40	1.60
E	2.40	2.60	K	0.35	0.41
F	0.89	1.20	L	5° TYP.	
			M	0.70 REF.	

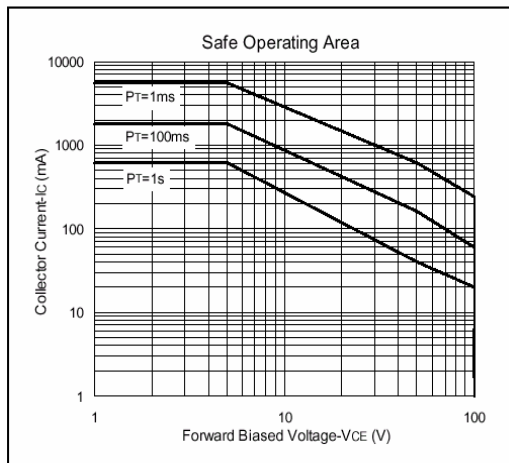
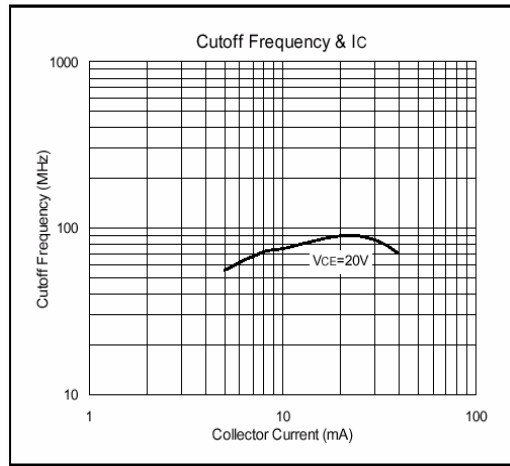
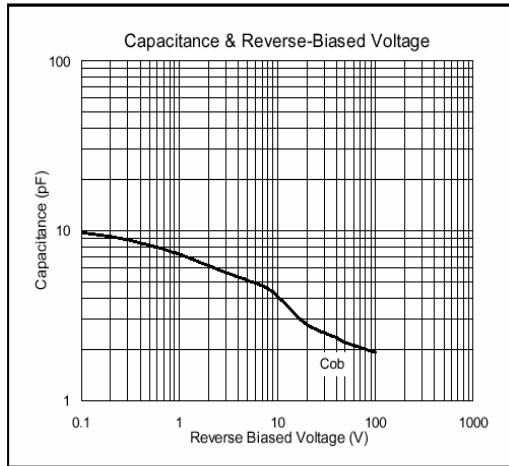
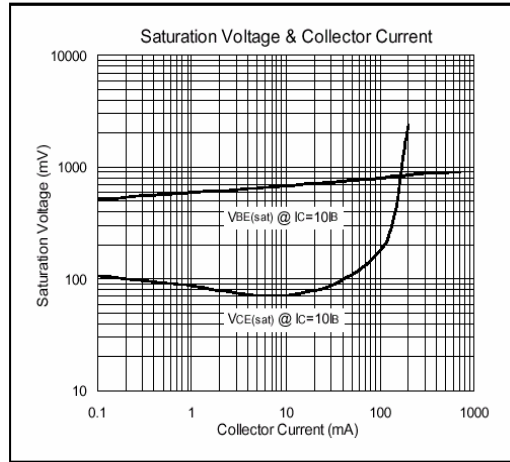
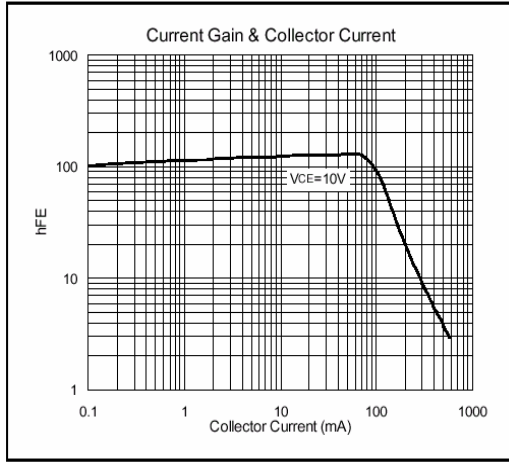
Absolute Maximum Ratings at Ta = 25°C

Parameter	Symbol	Ratings	Unit
Junction Temperature	Tj	+150	°C
Storage Temperature	Tstg	-55 ~ +150	°C
Collector to Base Voltage	VCBO	300	V
Collector to Emitter Voltage	VCEO	300	V
Emitter to Base Voltage	VEBO	6.0	V
Collector Current	IC	500	mA
Total Power Dissipation	PD	1.0	W

Characteristics at Ta = 25°C

Symbol	Min.	Typ.	Max.	Unit	Test Conditions
BVCBO	300	-	-	V	IC=100uA
BVCEO	300	-	-	V	IC=1mA
BVEBO	6	-	-	V	IE=10uA
ICBO	-	-	100	nA	VCB=260V
IEBO	-	-	100	nA	VEB=6V
VCE(sat)	-	-	500	mV	IC=20mA, IB=2mA
VBE(sat)	-	-	900	mV	IC=20mA, IB=2mA
hFE1	25	-	-		VCE=10V, IC=1mA
hFE2	40	-	-		VCE=10V, IC=10mA
hFE3	40	-	-		VCE=10V, IC=30mA
fT	50	-	-	MHZ	VCE=20V, IC=10mA, f=100MHZ
Cob	-	3	-	pF	VCB=20V

Characteristics Curve



Important Notice:

- All rights are reserved. Reproduction in whole or in part is prohibited without the prior written approval of GTM.
- GTM reserves the right to make changes to its products without notice.
- GTM semiconductor products are not warranted to be suitable for use in life-support Applications, or systems.
- GTM assumes no liability for any consequence of customer product design, infringement of patents, or application assistance.

Head Office And Factory:

- **Taiwan:** No. 17-1 Tatung Rd. Fu Kou Hsin-Chu Industrial Park, Hsin-Chu, Taiwan, R. O. C.
- TEL : 886-3-597-7061 FAX : 886-3-597-9220, 597-0785
- **China:** (201203) No.255, Jang-Jiang Tsai-Lueng RD. , Pu-Dung-Hsin District, Shang-Hai City, China
- TEL : 86-21-5895-7671 FAX : 86-21-38950165