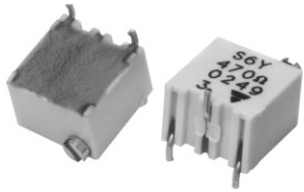


Multi-Turn Surface Mount Miniature 1/4" Square Cermet Trimmers, Fully Sealed


FEATURES

- 0.25 W at 85 °C
- GAM T1
- Military and professional grade
- Multi-turn operation
- A low contact resistance variation (down to 2 % Rn)
- Low end contact resistance (1 Ω typical)
- Full sealing
- Tests according to CECC 41 000

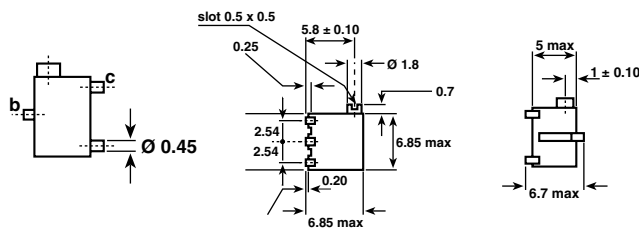
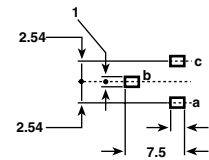
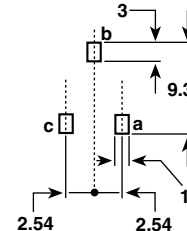
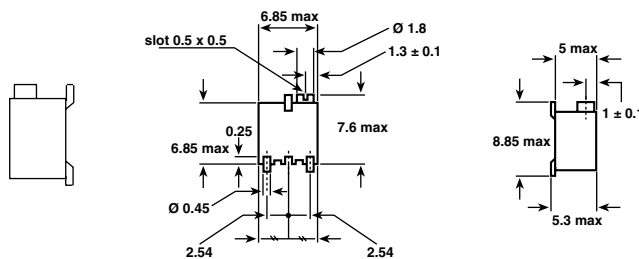
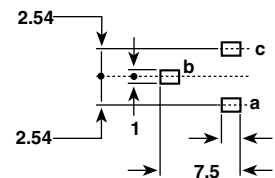
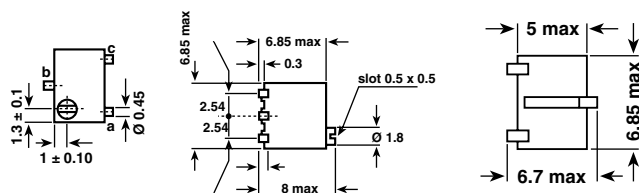
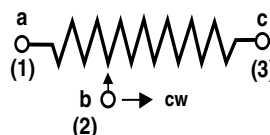


Three variations are available according to the positioning of the control screw and contact positions.

The TS6 multi-turn trimmer has been designed for use in PCB surface mounting applications.

The cermet track gives a high stability performance with an extended ohmic capacity of 10 Ω to 2 MΩ

DIMENSIONS in millimeters

TS6X

**RECOMMENDED
SOLDERING AREAS**

TS6Z

TS6Y

CIRCUIT DIAGRAM


Tolerance unless otherwise specified ± 0.5

ELECTRICAL SPECIFICATIONS	
Resistive Element	Cermet
Electrical Travel	13 turns ± 2
Resistance Range	10 Ω to 2 MΩ
Standard Series E3 and Series	1 - 2.2 - 4.7 and 1 - 2 - 5
Tolerance	Standard ± 10 %
	On request ± 5 %
Power Rating Linear	0.25 W at 85 °C
Temperature Coefficient	See Standard Resistance Element Data
Limiting Element Voltage (Linear Law)	250 V
Contact Resistance Variation	2 % Rn or 2 Ω
End Resistance (Typical)	1 Ω
Dielectric Strength (RMS)	1000 V
Insulation Resistance	10 ⁶ MΩ

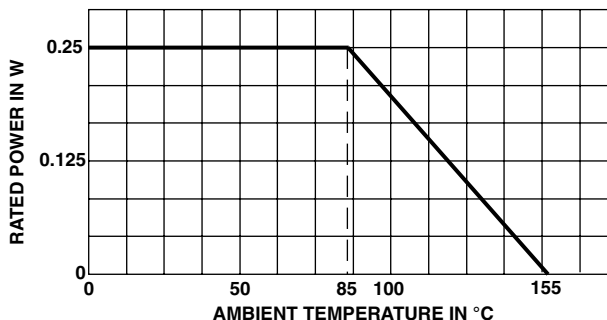
MECHANICAL SPECIFICATIONS

Mechanical Travel	15 turns ± 5
Operating Torque (max. Ncm)	1.5
End Stop Torque	clutch action
Unit Weight (max. g)	0.5
Wiper (actual travel)	positioned at approx. 50 %

ENVIRONMENTAL SPECIFICATIONS

Temperature Range	- 55 °C to + 155 °C
Climatic Category	55/125/56
Sealing	fully sealed container solder immersion IP67

POWER RATING CHART



PERFORMANCE					
CECC 41100				TYPICAL VALUES AND DRIFTS	
TESTS	CONDITIONS	$\frac{\Delta RT}{RT}$ (%) REQUIREMENTS	$\frac{\Delta R_{1-2}}{R_{1-2}}$ (%)	$\frac{\Delta RT}{RT}$ (%)	$\frac{\Delta R_{1-2}}{R_{1-2}}$ (%)
Climatic Sequence	Phase A dry heat 125 °C Phase B damp heat Phase C cold - 55 °C Phase D damp heat 5 cycles	± 2 %	± 3 %	± 0.5 %	± 1 %
Long Term Damp Heat	56 days 40 °C 93 % RH	± 2 % Dielectric strength: 250 V RMS Insulation resistance: > 100 MΩ	± 3 %	± 0.5 % Dielectric strength: 1000 V RMS Insulation resistance: > 104 MΩ	± 1 %
Rotational Life (Electrical, Mechanical)	200 cycles at rated power	± 2 % Contact res. variat.: < 3 % Rn		± (2 % + 3 Ω) Contact res. variat.: < 1 % Rn	
Load Life	1000 h at rated power 90'/30' - ambient temp. 85 °C	± 2 % Contact res. variat.: < 3 % Rn	± 4 %	± 1 % Contact res. variat.: < 1 % Rn	± 2 %
Thermal Shock	5 cycles - 55 °C to + 125 °C	± 1.5 %	$\frac{\Delta V_{1-2}}{V_{1-3}}$ ± 1 %	± 0.5 %	$\frac{\Delta V_{1-2}}{V_{1-3}}$ < ± 1 %
Shock	50 g at 11m secs 3 successive shocks in 3 directions	± 1 %	± 2 %	± 0.1 %	± 0.2 %
Vibration	10 - 55 Hz 0.75 mm or 10 g for 6 hours	± 1 %	$\frac{\Delta V_{1-2}}{V_{1-3}}$ ± 2 %	± 0.1 %	$\frac{\Delta V_{1-2}}{V_{1-3}}$ < ± 0.2 %



**Multi-Turn Surface Mount
Miniature 1/4" Square Cermet Trimmers, Fully Sealed**

Vishay Sfernice

STANDARD RESISTANCE ELEMENT DATA					
STANDARD RESISTANCE VALUES	LINEAR LAW			TYPICAL TCR - 55 °C + 125 °C	
	MAX. POWER AT 85 °C	MAX. WORKING VOLTAGE	MAX. WIPER CUR.		
Ω	W	V	mA	ppm/°C	
10	0.25	158	158	± 100	
22	↓	2.34	107		
47		3.43	73		
100		5	50		
220		7.42	34		
470		10.8	23		
1K		15.8	15.8		
2.2K		23.4	10.7		
4.7K		34.3	7.3		
10K		50	5		
22K		74.2	3.37		
47K		108.4	2.31		
100K		158	1.58		
220K		0.25	234		1.97
470K		0.13	250		0.53
1M		0.06	250		0.25
2M		0.03	250		0.125

MARKING

Printed: VISHAY trademark, model, style, ohmic value (in Ω, kΩ, MΩ), tolerance (in %) only if non standard, manufacturing date, marking of terminal 3.

SOLDERING RECOMMENDATION

Soldering cycle: 10 s at 220 °C max or with an 40 W iron; 3 s at 350 °C. Soldering is recommended by reflow or vapor phase.

PACKAGING
- X, Y and Z types: on tape and reel (Dia. 330 mm) of 500 pieces: TR - In magazine pack by 50 pieces (Tube) code "TU"

ORDERING INFORMATION					
TS6	Y	470 kΩ	± 10 %	TU50	e3
MODEL	STYLE	OHMIC VALUE	TOLERANCE	PACKAGING	LEAD FINISH
				TU50: Tube	e3: pure Sn
				On request - TR500: Tape and reel	

SAP PART NUMBERING GUIDELINES													
T	S	6	Y	4	7	4	K	T	2	0	□	□	□
MODEL			STYLE	OHMIC VALUE			TOL	PACKAGING CODE			SPECIAL (IF APPLICABLE)		
See the end of this data book for conversion tables													



Disclaimer

All product specifications and data are subject to change without notice.

Vishay Intertechnology, Inc., its affiliates, agents, and employees, and all persons acting on its or their behalf (collectively, "Vishay"), disclaim any and all liability for any errors, inaccuracies or incompleteness contained herein or in any other disclosure relating to any product.

Vishay disclaims any and all liability arising out of the use or application of any product described herein or of any information provided herein to the maximum extent permitted by law. The product specifications do not expand or otherwise modify Vishay's terms and conditions of purchase, including but not limited to the warranty expressed therein, which apply to these products.

No license, express or implied, by estoppel or otherwise, to any intellectual property rights is granted by this document or by any conduct of Vishay.

The products shown herein are not designed for use in medical, life-saving, or life-sustaining applications unless otherwise expressly indicated. Customers using or selling Vishay products not expressly indicated for use in such applications do so entirely at their own risk and agree to fully indemnify Vishay for any damages arising or resulting from such use or sale. Please contact authorized Vishay personnel to obtain written terms and conditions regarding products designed for such applications.

Product names and markings noted herein may be trademarks of their respective owners.