

Features

- Frequency Range: 1400~1700MHz
- Standard Hermetic Package
- Operating Temperature Range: -55°C ~ +85°C

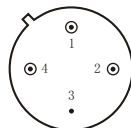
Specifications (50 Ω, V_{CC} = +12V, T_A = -55°C ~ +85°C)

Parameter	Symbol	Unit	Guaranteed	Typical
Frequency Range	f _L ~f _H	MHz	1400~1700	1400~1700
Gain	G _p	dB	≥23.0	28.0
Gain Flatness	ΔG _p	dB	--	±0.5
Noise Figure	F _n	dB	≤1.4 Δ	1.1
Input VSWR	VSWR _i	--	≤2.0:1 Δ	1.6
Output VSWR	VSWR _o	--	≤2.0:1 Δ	1.6
Output Power @ 1dB Compression	P ₋₁	dBm	≥10.0 * Δ	12.0
DC Current	I _{CC}	mA	--	65

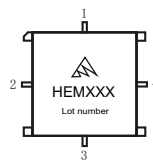
“*”f = 1700MHz; “Δ” T_A = 24 ± 1°C;

Maximum Rating

- DC Voltage : +13.5VDC
- RF Input: +10dBm
- Storage Temp: +125°C



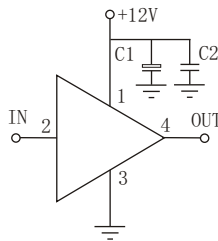
T0-8D



SMO-8D

Application Notes

1. Typical application shown as right, C₁ = 10~33 μF ; C₂ = 3300~6800pF;
2. See assembly section for mounting information
3. Connectorized package(SMA-1) available
4. ESD observe handing precautions



Typical Curves

