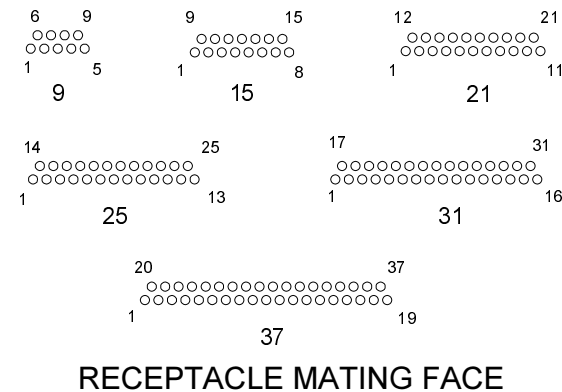
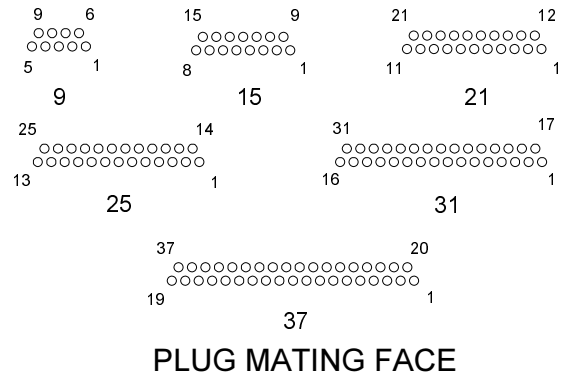
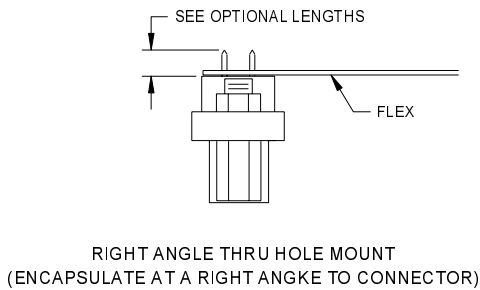
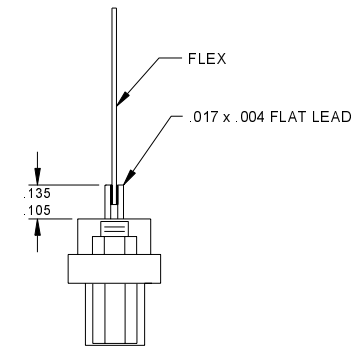
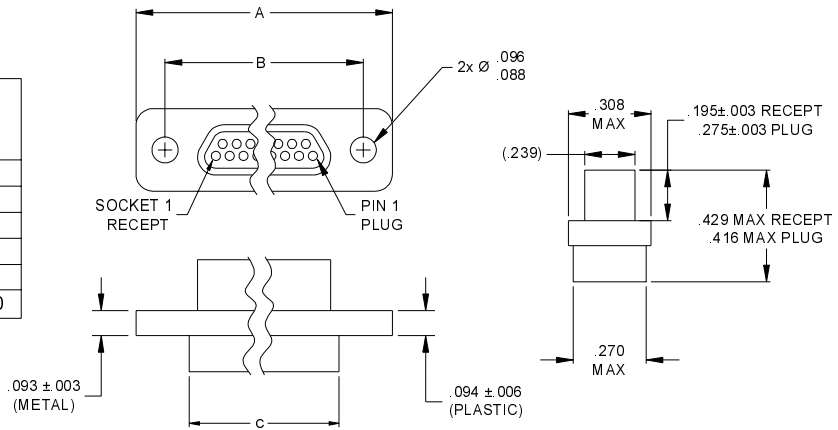


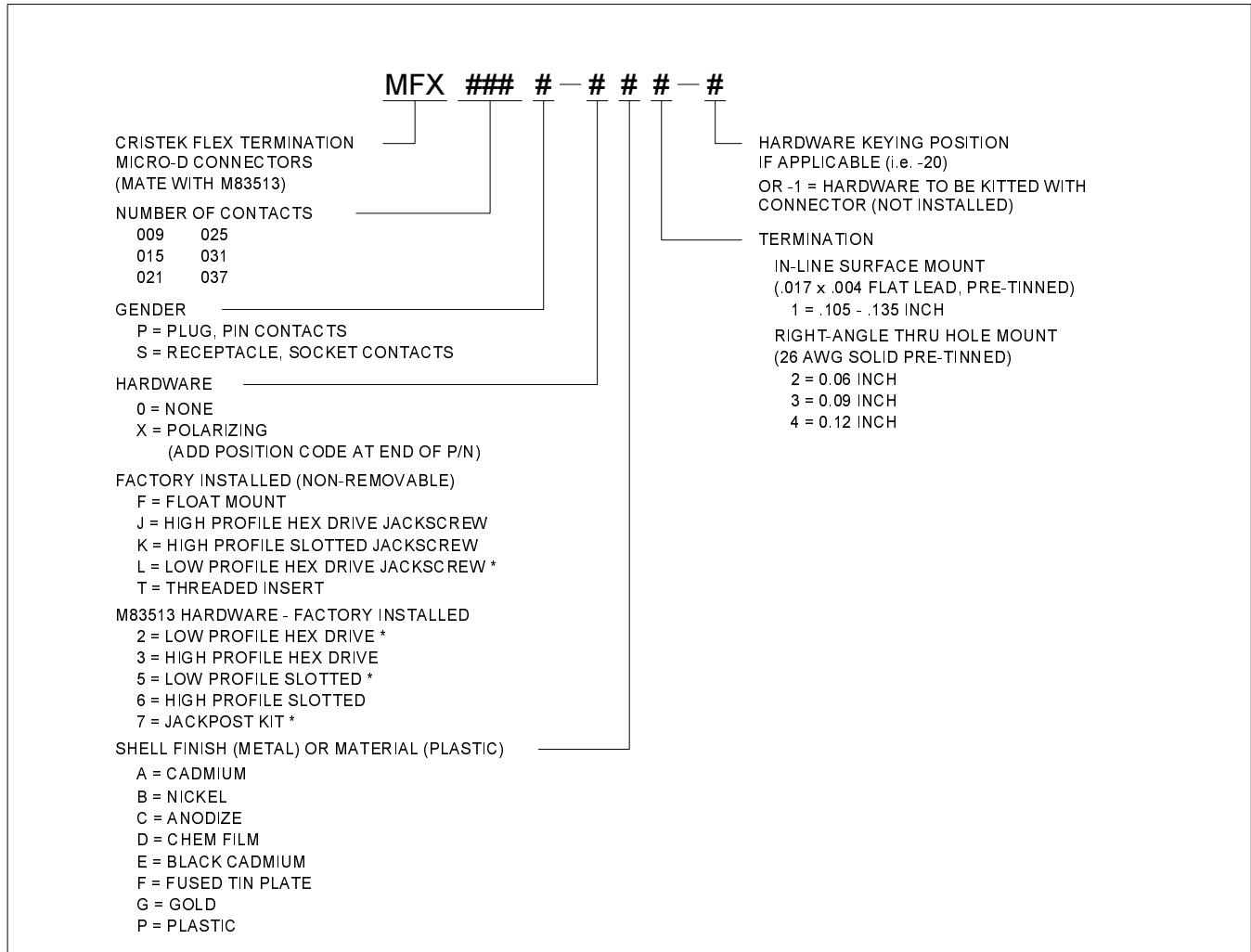
1.2 MICRO CONNECTORS / MOTS

NO. OF CONTACTS	A MAX	B	C MAX
9	.785	.565	.400
15	.935	.715	.550
21	1.085	.865	.700
25	1.185	.965	.800
31	1.335	1.115	.950
37	1.485	1.265	1.100



TERMINATION OPTIONS

CRISTEK INTERCONNECTS, INC. www.cristek.com 1301 S. Lewis St. Anaheim, CA 92805 Phone: (714) 618-2000 FAX: (714) 535-4897	TITLE	MICRO-D METAL OR PLASTIC SHELL FLEX CIRCUIT TERMINATION			DWG. NO.	MFX			
	FILENAME	ADS-MFX-1			CODE IDENT NO.	67720	SHT	1 OF 2	REV
					TOLERANCE: .XXX ± .005 .XX ± .01 ANGLE ± 1°				



* = MOST COMMONLY USED & STOCKED WIRE TYPE AND HARDWARE OPTIONS

1. MATERIALS:

METAL SHELL - ALUMINUM PER QQ-A-200/8, QQ-A-250/11, OR QQ-A-591
 METAL INSULATOR - DIALLYL PHTHALATE PER MIL-M-14, TYPE SDG-F
 PLASTIC SHELL / INSULATOR - POLYPHENYLENE SULFIDE PER MIL-M-24519 TYPE GST-40F
 INTERFACIAL SEAL (METAL SHELL ONLY) - FLUOROSILICONE BLEND
 PIN CONTACT - BERYLLIUM COPPER
 SOCKET CONTACT - COPPER ALLOY

2. FINISH (METAL):

SHELL - CADMIUM PER QQ-P-416, TYPE II, CLASS 3 OVER
 ELECTROLESS NICKEL PER AMS 2404
 OR ELECTROLESS NICKEL PER AMS 2404.
 CONTACT - GOLD PER MIL-G-45204, TYPE II, GRADE C,
 CLASS I OVER NICKEL PER QQ-N-290.

3. SPECIFICATIONS:

CURRENT RATING ----- 3 AMPS MAX
 TEMPERATURE RATING ----- -55° C TO +125° C
 INSULATION RESISTANCE ----- 5000 MEGOHMS MIN
 DWV AT SEA LEVEL ----- 600 VAC
 DWV AT 70,000 FT ALTITUDE --- 150 VAC
 CONTACT RESISTANCE ----- 8 MILLIOHMS MAX AT 2.5 AMPS
 LOW LEVEL CONTACT ----- 10 MILLIOHMS MAX
 RESISTANCE
 CONTACT RETENTION ----- 5 lb MINIMUM AXIAL LOAD
 ENGAGEMENT FORCE ----- 6 oz MAX
 SEPARATION FORCE ----- 0.5 oz MIN

4. ADDITIONAL INFORMATION:

DESIGN AND PERFORMANCE IN GENERAL
 ACCORDANCE WITH M83513
 FOR OTHER TERMINATIONS, CONTACT CRISTEK.

CRISTEK INTERCONNECTS, INC. www.cristek.com 1301 S. Lewis St. Anaheim, CA 92805 Phone: (714) 618-2000 FAX: (714) 535-4897	TITLE	MICRO-D METAL OR PLASTIC SHELL FLEX CIRCUIT TERMINATION			DWG. NO.	MFX				
	FILENAME	ADS-MFX-2	CODE IDENT NO.	67720	SHT	2	OF	2	REV	A
			TOLERANCE: .XXX ±.005 .XX ±.01			ANGLE ±1°				