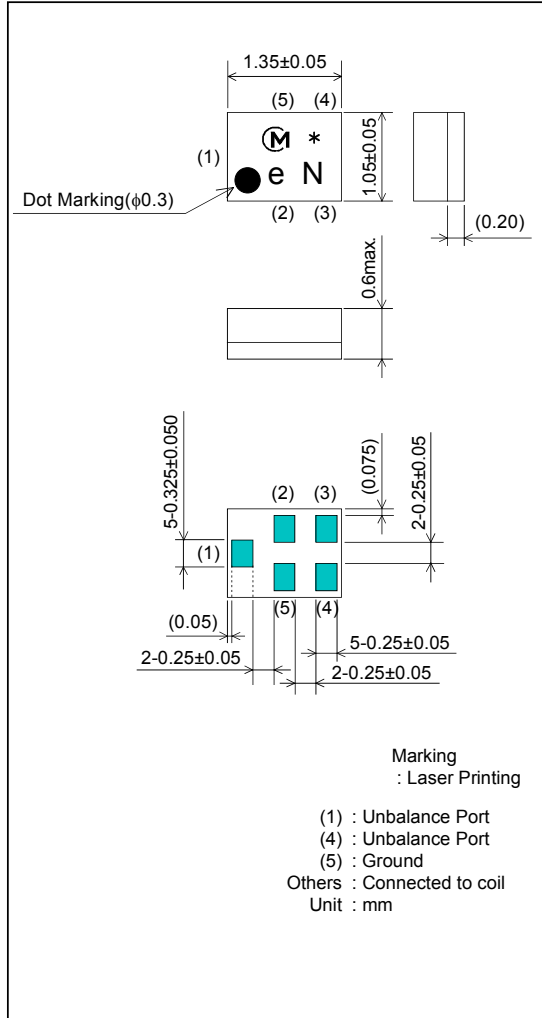


SAW REJECTION FILTER FOR DVB-H

Murata part number : SAEEB897MCA0B00

■ Package Dimensions



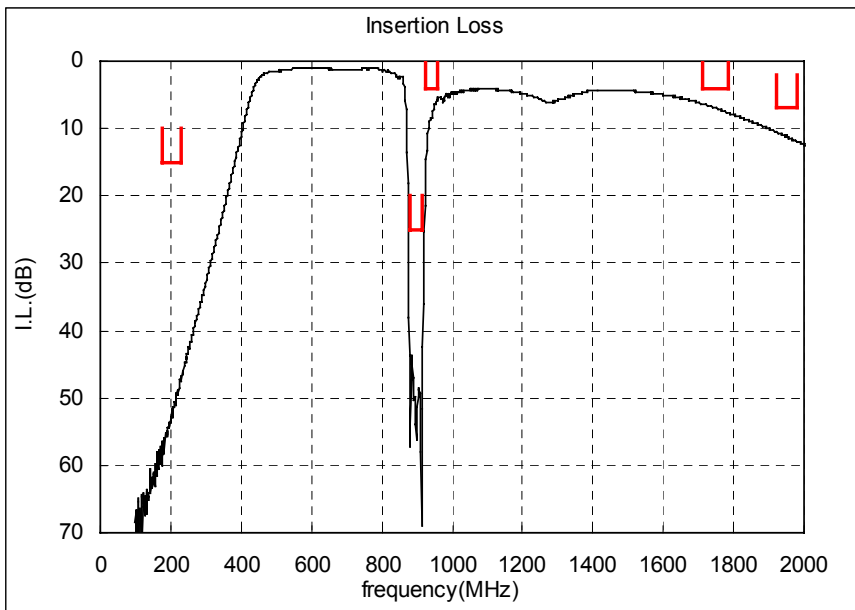
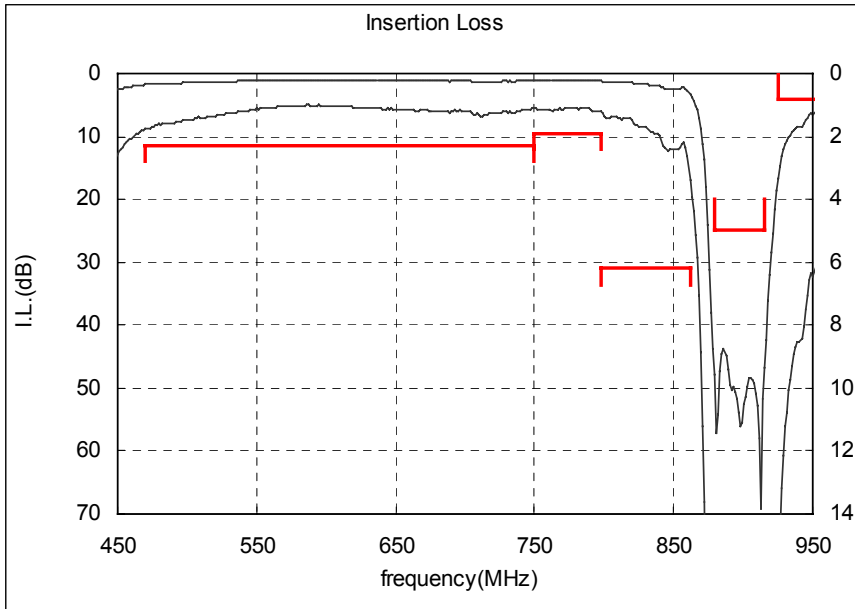
■ Specification

Item	Specification		
	-30 to 85°C	25±2°C	typ.
Nominal Center Frequency(f_c)	897.5 MHz		
Stop Band Attenuation 880 to 915MHz	25 dB min.	40 dB min.	43 dB
Insertion Loss			
1) 174 to 230 MHz	15 dB min.	15 dB min.	46 dB
2) 470 to 750 MHz	2.3 dB max.	2.2 dB max.	1.7 dB
3) 750 to 798 MHz	1.9 dB max.	1.7 dB max.	1.2 dB
4) 798 to 862 MHz	6.5 dB max.	4.5 dB max.	3.2 dB
5) 925 to 960 MHz	4.0 dB min.	4.0 dB min.	5.2 dB
6) 1710 to 1785 MHz	4.0 dB min.	4.0 dB min.	6.1 dB
7) 1920 to 1980 MHz	7.0 dB min.	7.0 dB min.	10 dB
VSWR(470 to 862MHz)	2.6 max	2.6max	2.0
Unbalance Port Matching Impedance (nominal)	50Ω		
Input Signal Level	470...862MHz: 200mW(+23dBm), 2000hours 880...915MHz: 2W(+33dBm), 2000hours		

SAW REJECTION FILTER FOR DVB-H

Murata part number : SAEEB897MCA0B00

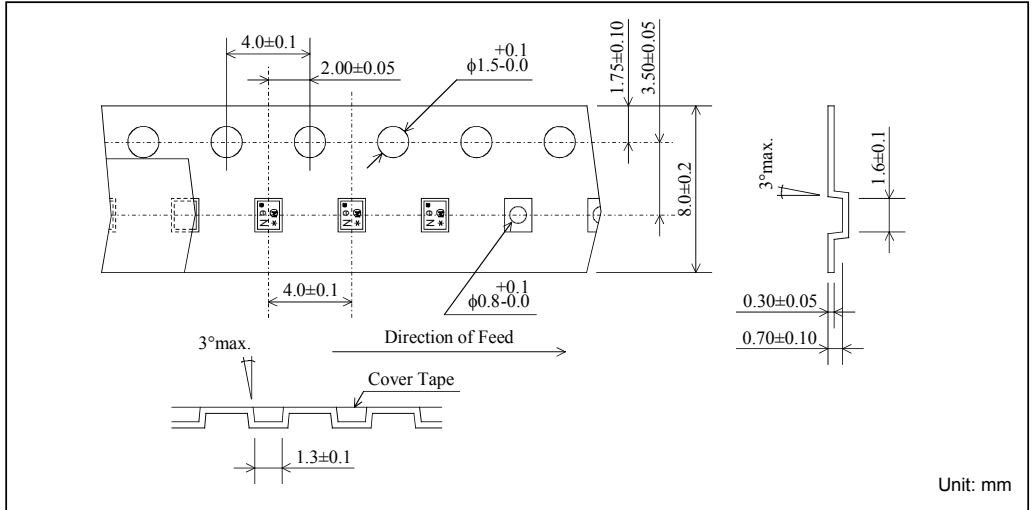
■ Frequency Performance



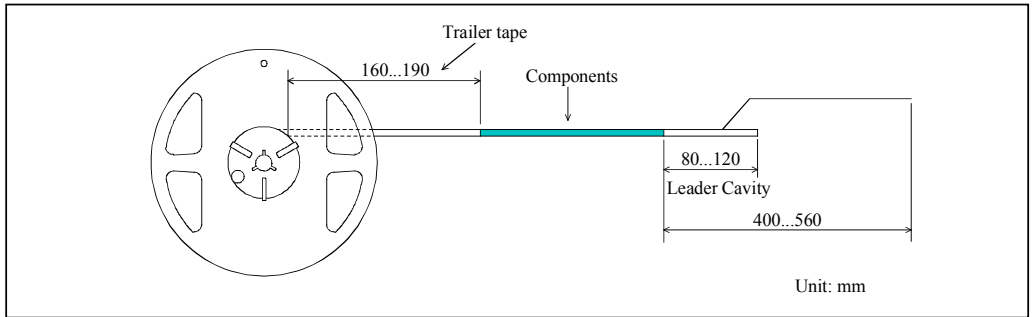
SAW REJECTION FILTER FOR DVB-H

Murata part number : SAEEB897MCA0B00

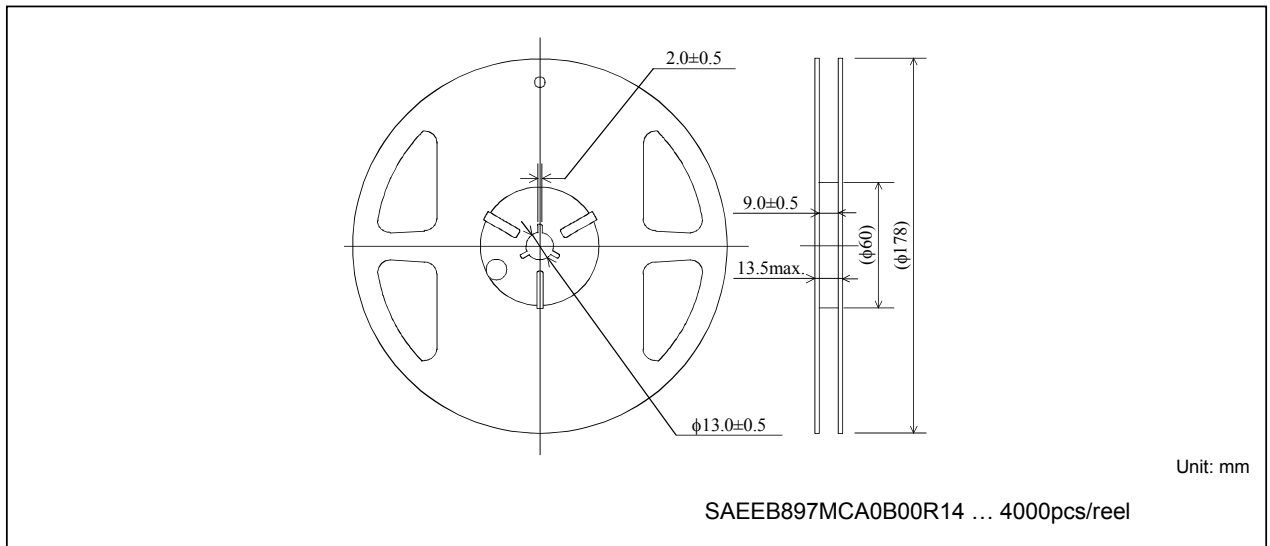
■ Dimensions of Carrier Tape



■ Dimensions of Tape



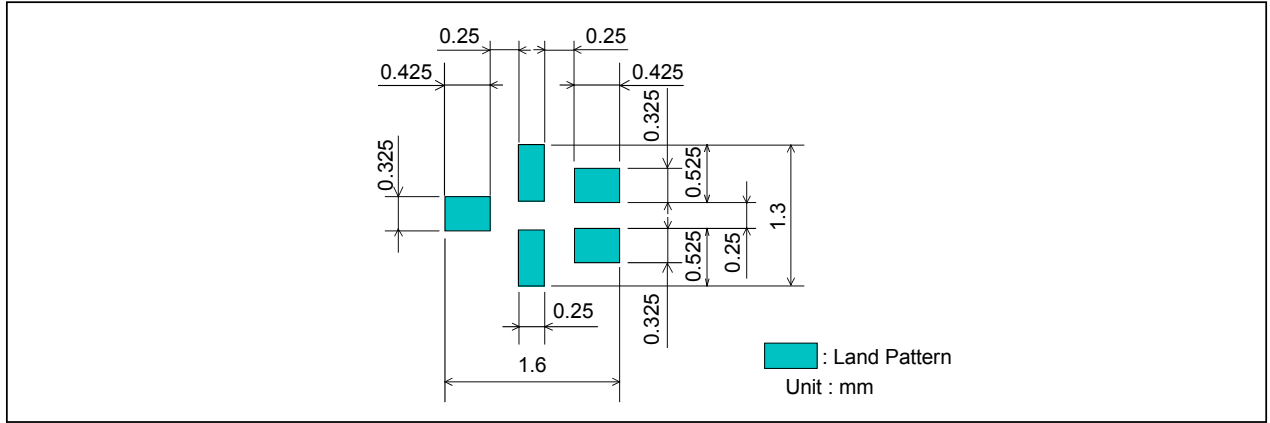
■ Dimensions of Reel



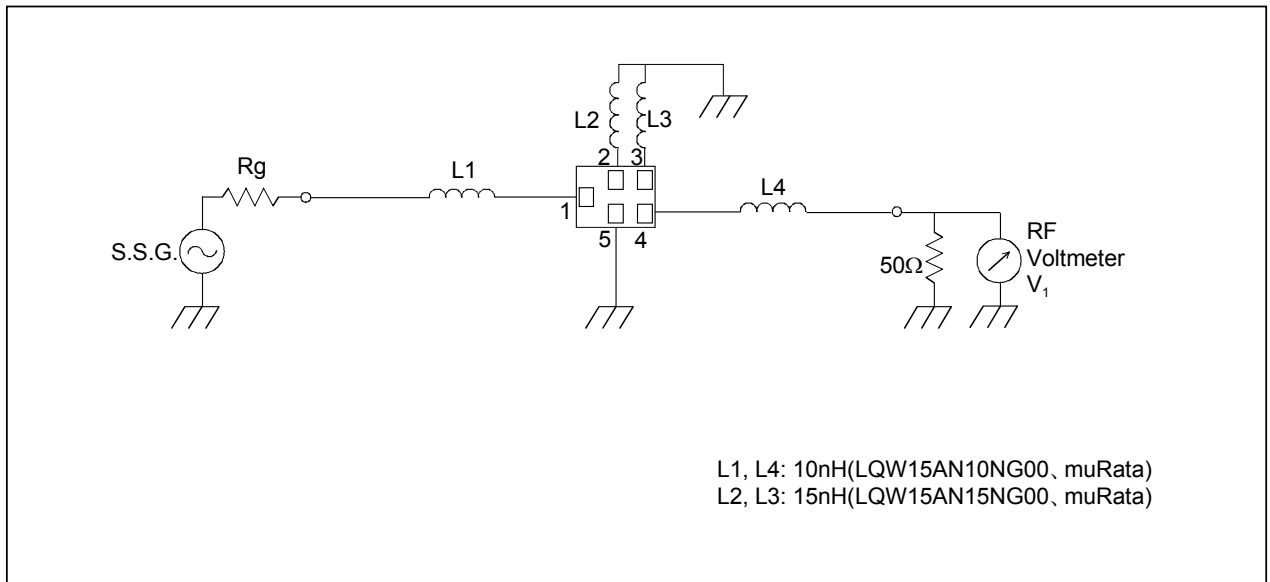
SAW REJECTION FILTER FOR DVB-H

Murata part number : SAEEB897MCA0B00

Recommended Land Pattern



Test Circuit



- This PDF Datasheet is downloaded from the website of Murata Manufacturing Co., Ltd. Therefore, it's specifications are subject to change or our products in it may be discontinued without advance notice. Please check with our sales representatives or product engineers before ordering.
- This PDF Datasheet has only typical specifications because there is no space for detailed specifications. Therefore, please approve our product specifications or transact the approval sheet for product specifications before ordering.