

New Jersey Semi-Conductor Products, Inc.

20 STERN AVE.
 SPRINGFIELD, NEW JERSEY 07081
 U.S.A.

TELEPHONE: (973) 376-2922
 (212) 227-6005
 FAX: (973) 376-8960

PARAMETERS

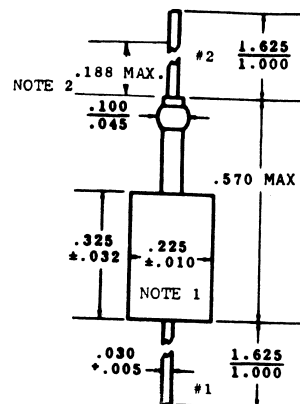
1N5004

SI RECTIFIER, $500\text{mA} < I(O)/I(F) \leq 1\text{A}$

Description: Si Rectifier, $500\text{mA} < I(O)/I(F) \leq 1\text{A}$

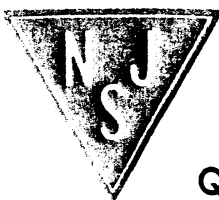
Manufacturer.....	
Mil/High-Rel? (Y/N).....	
I(out) (If AVG) Max.....	1.0
@Temp. (test) (°C).....	40
VRRM.....	100
1-Cycle Surge Current (A).....	35N
Vf Max.....	1.3
@If (test).....	1.0
@Temp. (test) for Vf).....	40
Ir @25°C.....	
@Volts (test) (V).....	100
Ir @ Diff. Temp (A).....	1.0m
@Temp (test) (°C).....	40
Oper. Temp (°C) Max.....	150
Pkg Style.....	DO-13
Surface Mounted (Y/N).....	N

DO-13



NOTES:

1. The major diameter is essentially constant along its length.
2. Within this zone diameter may vary to allow for lead finishes and irregularities.
3. Dimension to allow for pinch or seal deformation anywhere along tabulation.



Quality Semi-Conductors