

CRITICAL DIMENSION INSPECTION INSTRUCTION TABLE	
ASSEMBLY OPERATION	IN-PROCESS INSPECTION INSPECT CODE
FILL C-297-01-X	C1, C2, C4, C5
FILL C-298-01-X	C1, C2, C4, C6
FILL C-297-02-X/C-298-02-X	C1, C2, C4, C9, C10, C11, C12
FILL WT-60-01-T	C7

ZF5-XX-XX-XX-WT-XX

No OF POSITIONS

-04 THRU -50
(USE ZF5-XX AND ZF5C-XX-XX)

OPTIONS

-TR: TAPE AND REEL
(SEE SHEET 4, FIG. 3)

WELD TAB

USE WT-60-01-T

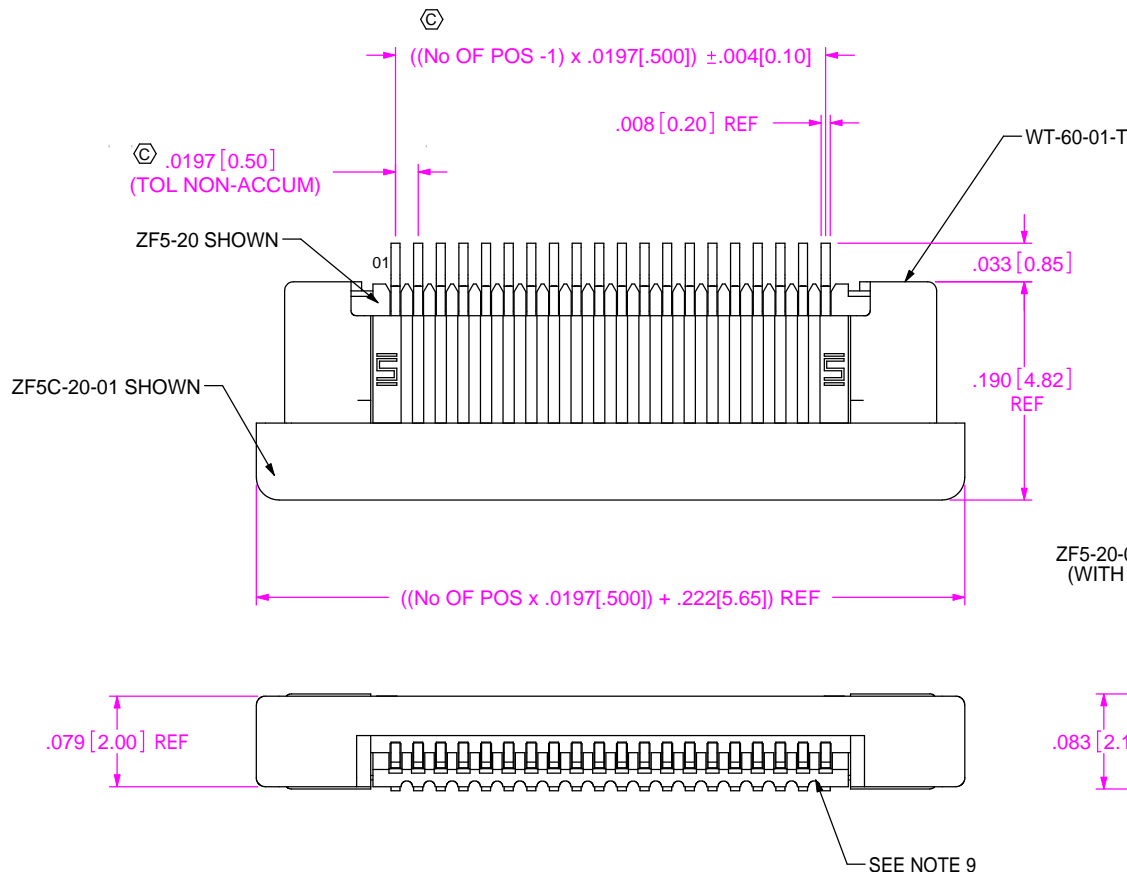
LEAD STYLE

-01: USE CONTACT C-297-01-X
-02: USE CONTACT C-298-01-X
-03: USE CONTACTS C-297-02-X & C-298-02-X

PLATING SPECIFICATION

-T: PURE TIN, MATTE FINISH
-TM: PURE TIN, MATTE FINISH
(SEE NOTE 7)Ⓢ

DO NOT SCALE FROM THIS PRINT



(SEE SHEETS 5 & 6 FOR ALTERNATE CONSTRUCTION)

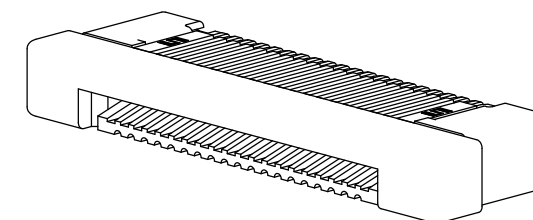
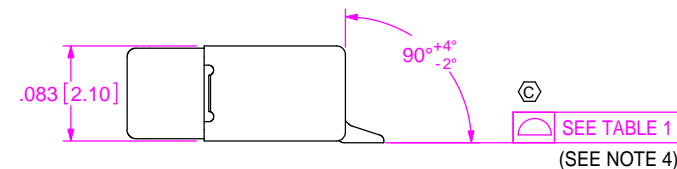


FIG. 1

ZF5-20-01-X-WT SHOWN
(WITH CAM CLOSED)



NOTES:

- Ⓢ REPRESENTS A CRITICAL DIMENSION.
- BURR ALLOWANCE: $.0010[0.025]$ MAXIMUM.
- CONTACT; MINIMUM PUSHOUT FORCE: 6 OZ.
- CO-PLANARITY INCLUDES TAILS AND WELD TABS.
- WELD TAB RETENTION: 6 OZ.
- BREAKOFF BURR NOT TO EXCEED $.007[0.18]$ AND MUST REMAIN ATTACHED.
- $.000040$ MIN NICKEL AND $.000080$ MIN TIN
- PIN 1 TO HAVE ORIENTATION AS SHOWN.Ⓢ
- VOIDS TO BE RAN AT VENDOR'S DISCRETION.

TABLE 1	
No OF POS.	COPLANARITY
-04 THRU -30	$.0040[0.101]$
-31 THRU -50	$.0060[0.152]$

UNLESS OTHERWISE SPECIFIED, DIMENSIONS ARE IN INCHES.

TOLERANCES ARE:

DECIMALS ANGLES
.XX: $\pm .01[0.3]$ 2°
.XXX: $\pm .005[0.13]$
.XXXX: $\pm .0020[0.051]$

PROPRIETARY NOTE

THIS DOCUMENT CONTAINS INFORMATION CONFIDENTIAL AND PROPRIETARY TO SAMTEC, INC. AND SHALL NOT BE REPRODUCED OR TRANSFERRED TO OTHER DOCUMENTS OR DISCLOSED TO OTHERS OR USED FOR ANY PURPOSE OTHER THAN THAT WHICH IT WAS OBTAINED WITHOUT THE EXPRESSED WRITTEN CONSENT OF SAMTEC, INC.

MATERIAL: DO NOT SCALE DRAWING

SHEET SCALE: 6:1

HOUSING: LCP, COLOR: NATURAL
CAM SLIDER: LCP, COLOR: BLACK
CONTACT & WELD TAB:
PHOS BRONZE

MAX FLASH ALLOWED: .002
MAX GATE VESTIGE: .002

c:\enterprise\aut\DWG\MISC\MKTG\ZF5-XX-XX-XX-WT-XX-MKT.SLDRW



520 PARK EAST BLVD, NEW ALBANY, IN 47150
PHONE 812-944-6733 FAX: 812-948-5047
e-Mail info@SAMTEC.com code 55322

DESCRIPTION:

ZERO INSERTION FORCE .5mm ASSEMBLY

DWG. NO.

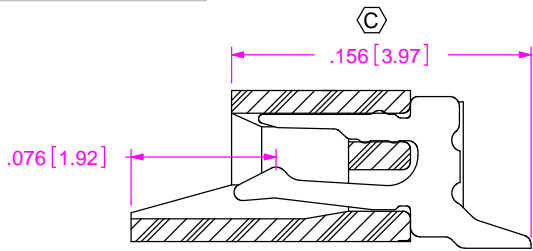
ZF5-XX-XX-XX-WT-XX

BY: DEAN P

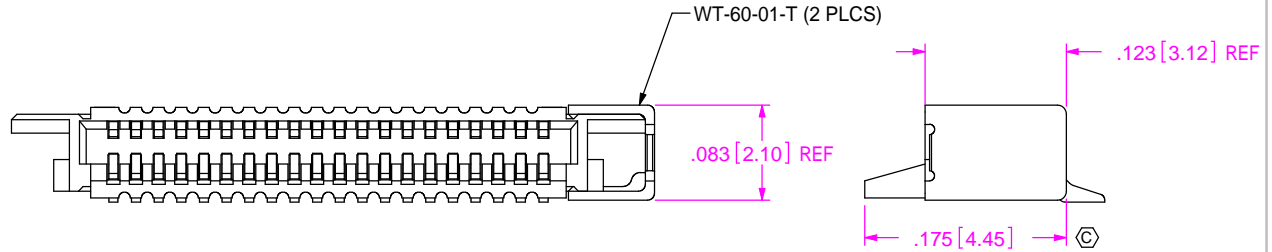
12/12/2000

SHEET 1 OF 6

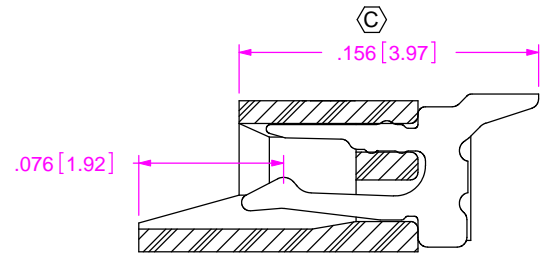
REVISION T



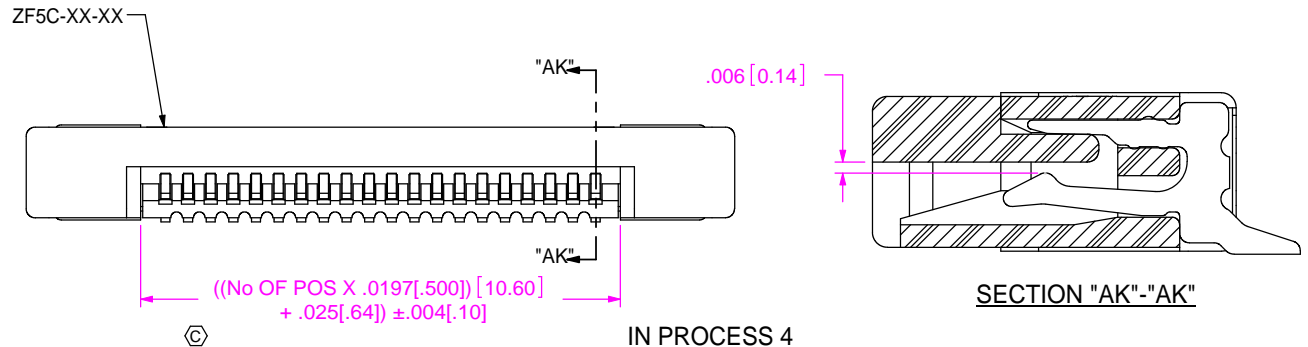
IN PROCESS 1
-01 LEADSTYLE SHOWN
FILL C-297-01-X



IN PROCESS 3
FILL WT-60-01-X
(SOME FEATURES REMOVED FOR CLARITY)



IN PROCESS 1
-02 LEADSTYLE SHOWN
FILL C-298-01-X

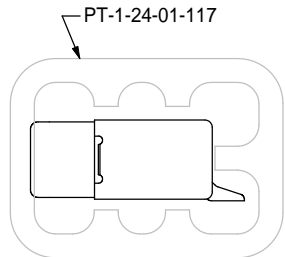


IN PROCESS 4
INSERT ZF5C-XX-XX
(CAM SHOWN IN CLOSED POSITION)

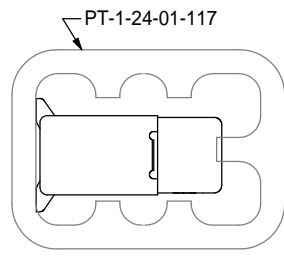
SECTION "AK"-"AK"

PACKAGING VIEWS
(-TR OPTION SHOWN ON SHEET 4)

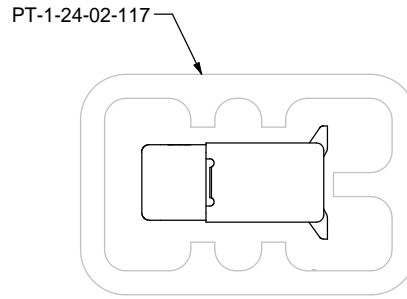
[PARTS TO HAVE POSITION #1 LOADED IN
SAME DIRECTION AS ARROW ON TUBE]



-01 & -02 LEAD STYLES
-04 THRU -39 POSITIONS



-03 LEAD STYLE
-04 THRU -39 POSITIONS



-01, -02, & -03 LEAD STYLE
-40 THRU -50 POSITIONS

PACKAGING TABLE			
LEAD STYLE	No OF POS.	PACKAGING TUBE	PLUG
-01, -02 & -03	-04 THRU -39	PT-1-24-01-117	TP-24
	-40 THRU -50	PT-1-24-02-117	TP-24

c:\enterprise\vault\DWG\MISC\MKTG\ZF5-XX-XX-XX-WT-XX-MKT.SLDRW

PROPRIETARY NOTE

THIS DOCUMENT CONTAINS INFORMATION
CONFIDENTIAL AND PROPRIETARY TO
SAMTEC, INC. AND SHALL NOT BE REPRODUCED
OR TRANSFERRED TO OTHER DOCUMENTS OR
DISCLOSED TO OTHERS OR USED FOR ANY
PURPOSE OTHER THAN THAT WHICH IT WAS
OBTAINED WITHOUT THE EXPRESSED WRITTEN
CONSENT OF SAMTEC, INC.

DO NOT SCALE DRAWING

SHEET SCALE: 10:1



520 PARK EAST BLVD, NEW ALBANY, IN 47150
PHONE 812-944-6733 FAX: 812-948-5047
e-Mail info@SAMTEC.com code 55322

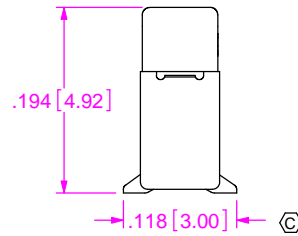
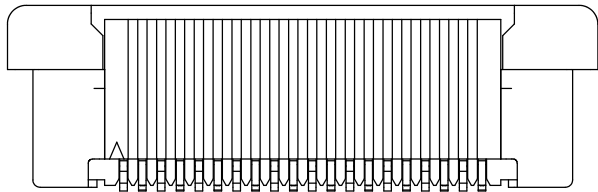
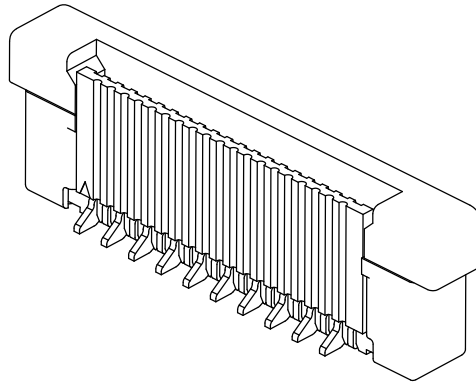
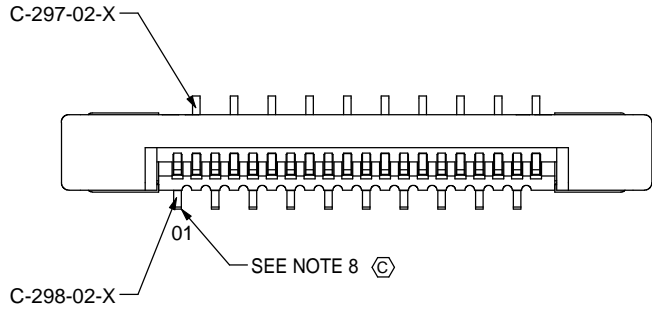
DESCRIPTION:
ZERO INSERTION FORCE .5mm ASSEMBLY

DWG. NO. **ZF5-XX-XX-XX-WT-XX**

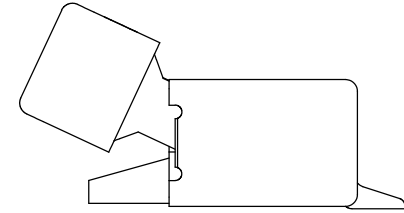
BY: DEAN P 12/12/2000 SHEET 2 OF 6

FIG. 2

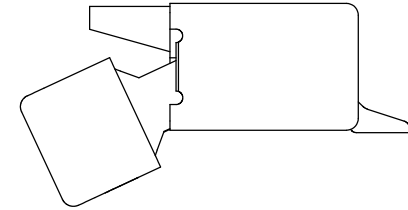
-03 LEAD STYLE
(SAME AS FIG. 1, EXCEPT AS SHOWN)
(ZF5-20-03-T-WT SHOWN)



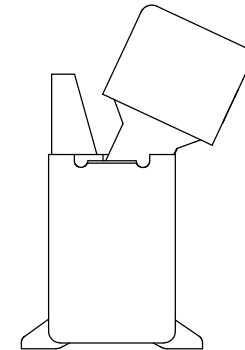
APPLICATION VIEWS



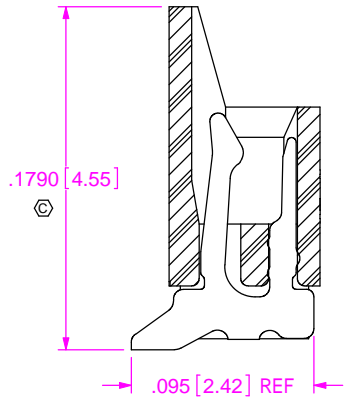
-01 LEAD STYLE SHOWN
(WITH CAM OPEN)



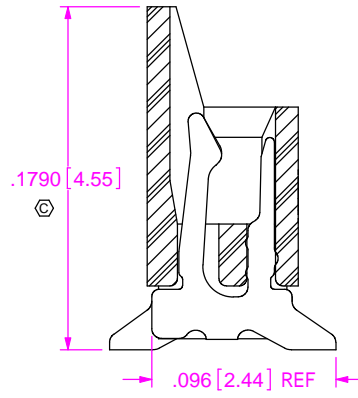
-02 LEAD STYLE SHOWN
(WITH CAM OPEN)



-03 LEAD STYLE SHOWN
(WITH CAM OPEN)



IN PROCESS 1A
-03 LEAD STYLE SHOWN
FILL C-298-02-X
(SAME AS IN PROCESS 1 FOR -01 LEAD
STYLE EXCEPT AS SHOWN)
(ODD POSITIONS FILLED ONLY)



IN PROCESS 1B
-03 LEADSTYLE SHOWN
FILL C-297-02-X
(SAME AS IN PROCESS 1 FOR -01 LEAD
STYLE EXCEPT AS SHOWN)
(EVEN POSITIONS FILLED ONLY)

c:\enterprise\aut\DWG\MISC\MKTG\ZF5-XX-XX-XX-WT-XX-MKT.SLDDRW

PROPRIETARY NOTE

THIS DOCUMENT CONTAINS INFORMATION
CONFIDENTIAL AND PROPRIETARY TO
SAMTEC, INC. AND SHALL NOT BE REPRODUCED
OR TRANSFERRED TO OTHER DOCUMENTS OR
DISCLOSED TO OTHERS OR USED FOR ANY
PURPOSE OTHER THAN THAT WHICH IT WAS
OBTAINED WITHOUT THE EXPRESSED WRITTEN
CONSENT OF SAMTEC, INC.

DO NOT SCALE DRAWING

SHEET SCALE: 5:1



520 PARK EAST BLVD, NEW ALBANY, IN 47150
PHONE: 812-944-6733 FAX: 812-948-5047
e-Mail: info@SAMTEC.com code 55322

DESCRIPTION:

ZERO INSERTION FORCE .5mm ASSEMBLY

DWG. NO.

ZF5-XX-XX-XX-WT-XX

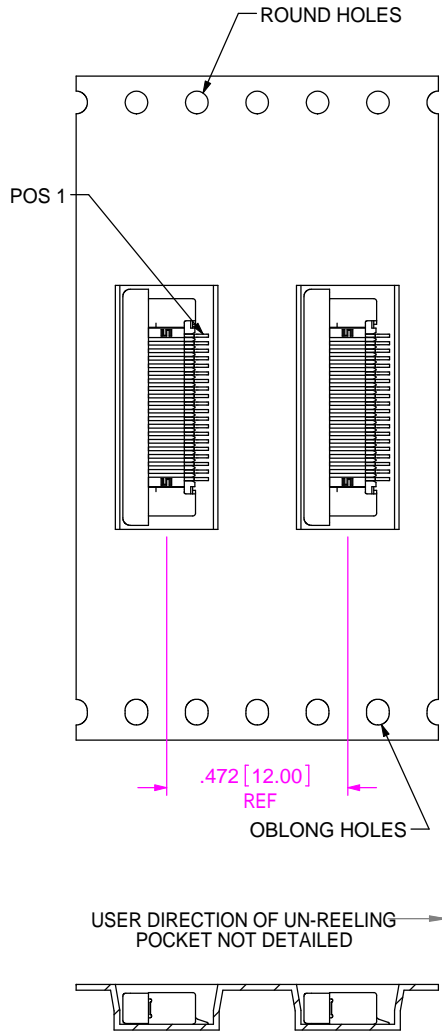
BY: DEAN P

12/12/2000

SHEET 3 OF 6

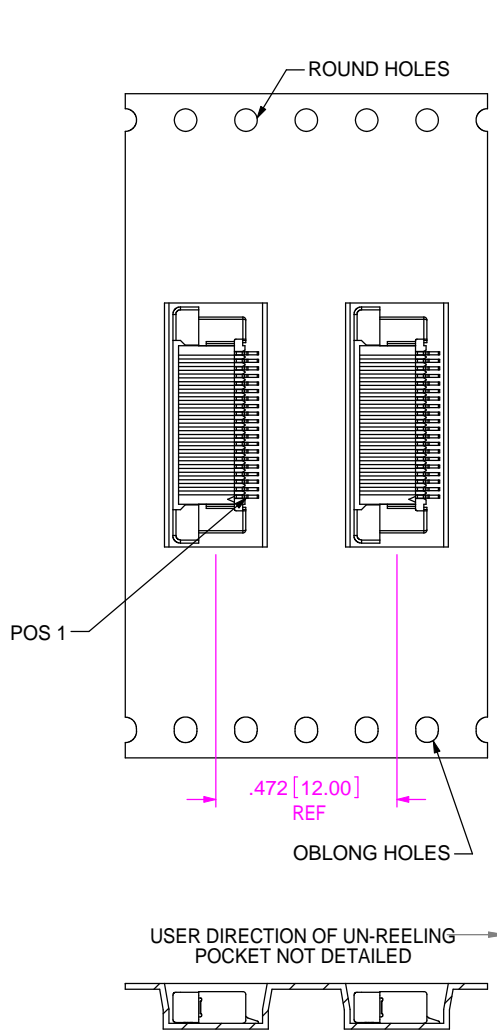
-01 LEAD STYLE

NOTE: PIN 1 CLOSEST TO ROUND HOLES



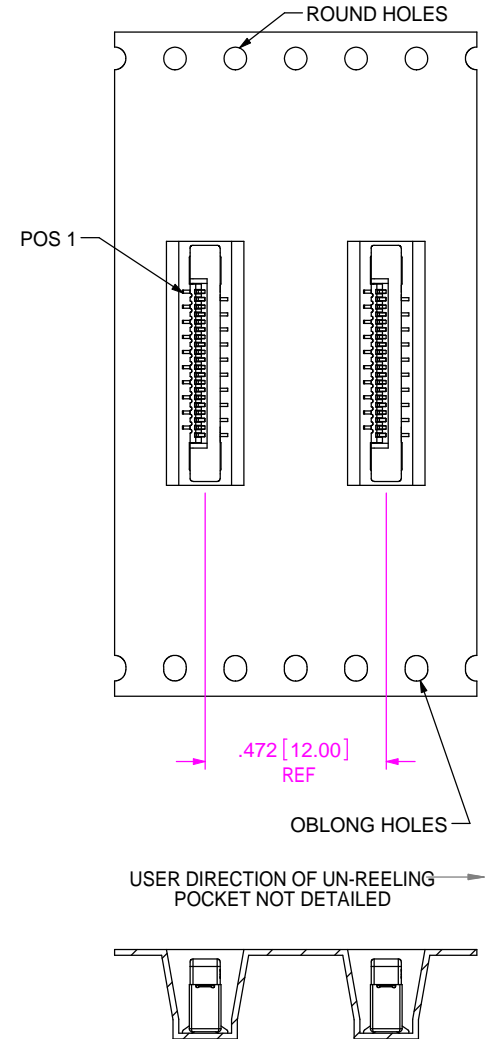
-02 LEAD STYLE

NOTE: PIN 1 CLOSEST TO OBLONG HOLES



-03 LEAD STYLE

NOTE: PIN 1 CLOSEST TO ROUND HOLES



PROPRIETARY NOTE

THIS DOCUMENT CONTAINS INFORMATION CONFIDENTIAL AND PROPRIETARY TO SAMTEC, INC. AND SHALL NOT BE REPRODUCED OR TRANSFERRED TO OTHER DOCUMENTS OR DISCLOSED TO OTHERS OR USED FOR ANY PURPOSE OTHER THAN THAT WHICH IT WAS OBTAINED WITHOUT THE EXPRESSED WRITTEN CONSENT OF SAMTEC, INC.

SHEET SCALE: 2:1



520 PARK EAST BLVD, NEW ALBANY, IN 47150
PHONE: 812-944-6733 FAX: 812-948-5047
e-Mail: info@SAMTEC.com code 55322

DESCRIPTION:
ZERO INSERTION FORCE .5mm ASSEMBLY

DWG. NO. **ZF5-XX-XX-XX-WT-XX**

BY: DEAN P 12/12/2000 SHEET 4 OF 6

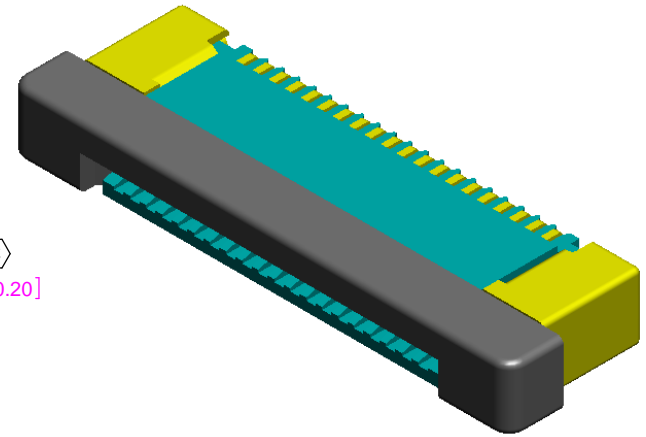
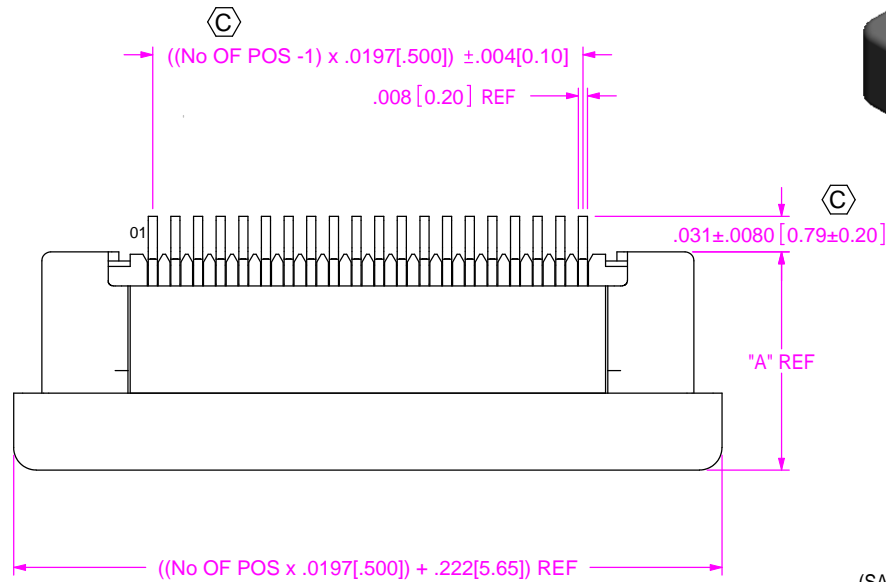
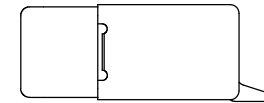
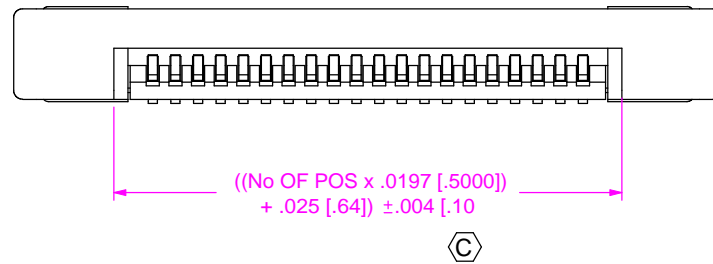


FIG. 4
 ZF5-20-01-X-WT SHOWN
 (WITH CAM CLOSED)
 (SAME AS FIG.1, UNLESS OTHERWISE STATED)
 (ALTERNATE CONSTRUCTION)



No OF POS.	"A"
-04 THRU -29	.185 [4.70]
-30 THRU -39	.189 [4.80]
-40 THRU -50	.193 [4.90]

PROPRIETARY NOTE

THIS DOCUMENT CONTAINS INFORMATION CONFIDENTIAL AND PROPRIETARY TO SAMTEC, INC. AND SHALL NOT BE REPRODUCED OR TRANSFERRED TO OTHER DOCUMENTS OR DISCLOSED TO OTHERS OR USED FOR ANY PURPOSE OTHER THAN THAT WHICH IT WAS OBTAINED WITHOUT THE EXPRESSED WRITTEN CONSENT OF SAMTEC, INC.

DO NOT SCALE DRAWING

SHEET SCALE: 2:1



520 PARK EAST BLVD, NEW ALBANY, IN 47150
 PHONE: 812-944-6733 FAX: 812-948-5047
 e-Mail: info@SAMTEC.com code 55322

DESCRIPTION:
 ZERO INSERTION FORCE .5mm ASSEMBLY

DWG. NO. **ZF5-XX-XX-XX-WT-XX**

BY: DEAN P 12/12/2000 SHEET 5 OF 6

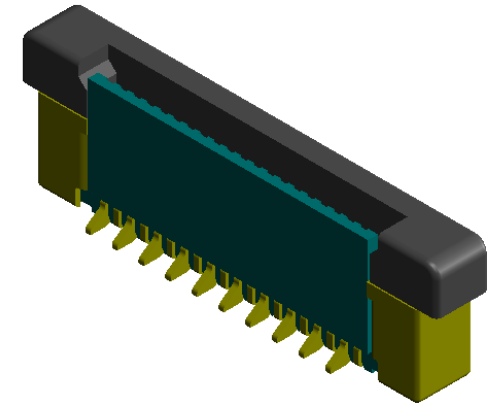
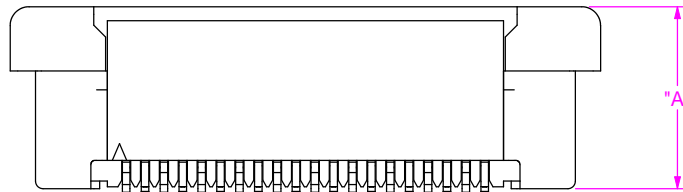
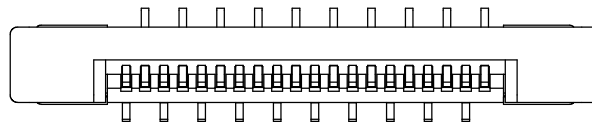


FIG. 5
 (SAME AS FIG. 2, UNLESS OTHERWISE STATED)
 (ZF5-20-03-X-WT SHOWN)
 (ALTERNATE CONSTRUCTION)

PROPRIETARY NOTE

THIS DOCUMENT CONTAINS INFORMATION CONFIDENTIAL AND PROPRIETARY TO SAMTEC, INC. AND SHALL NOT BE REPRODUCED OR TRANSFERRED TO OTHER DOCUMENTS OR DISCLOSED TO OTHERS OR USED FOR ANY PURPOSE OTHER THAN THAT WHICH IT WAS OBTAINED WITHOUT THE EXPRESSED WRITTEN CONSENT OF SAMTEC, INC.

DO NOT SCALE DRAWING

SHEET SCALE: 4:1



520 PARK EAST BLVD, NEW ALBANY, IN 47150
 PHONE: 812-944-6733 FAX: 812-948-5047
 e-Mail: info@SAMTEC.com code 55322

DESCRIPTION:
 ZERO INSERTION FORCE .5mm ASSEMBLY

DWG. NO. **ZF5-XX-XX-XX-WT-XX**

BY: DEAN P 12/12/2000 SHEET 6 OF 6