

Bc 'C: 'DC G#C BG
!\$('kFI !)\$

C DHC BG
!F. H5 D9'5B8' F99@
fG99G< 99H(Z: ÷ "' L

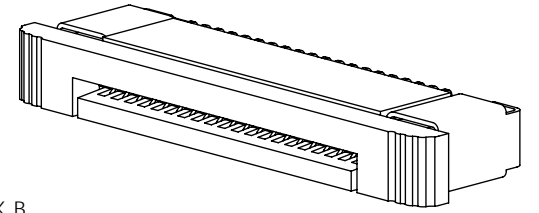
@58' G#M@
!\$% '7 C BH5 7 H6C HC A
!\$& '7 C BH5 7 HHC D
!\$' .J 9FH7 5@fG99G< 99H' L

K 9@B H56

D@5HB: 'GD97 ÷ 7 5 HC B
!H DI F9HBZA 5H@: B G<
!HA . DI F9HBZA 5H@: B G<
fG99B CH@' L

TABLE 1

No OF POS.	"A"
-04 THRU -29	.185[4.70]
-30 THRU -39	.189[4.80]
-40 THRU -50	.193[4.90]



: ÷ "'%

N)!&\$!\$%L!K HG<C K B
fk #k 7 5A '7 @C G98L

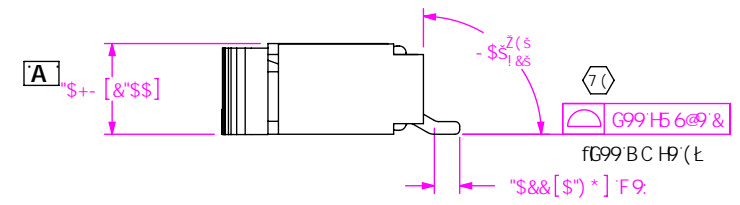
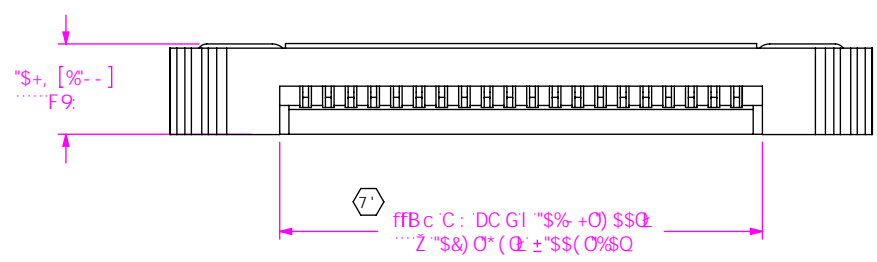


TABLE 2

No OF POS.	COPLANARITY
-04 THRU -30	.0040[0.101]
-31 THRU -50	.0060[0.152]

BC H@G

% (7) 'F9DF9G9BH5' 7 F #7 5 @8-A 9BGC B"
&" 6I FF 5 @C K 5B 7 9. "\$%\$O\$&) QA 5L-A I A "
" '7 C BH5 7 H/A B-A I A 'DI G<C I H: CF7 9. '* C N'
(" '7 C I D@5B5F #M@B 7 @ 8 9G H5 @G 5B8' K 9@B 'H5 6"
) "K 9@B 'H5 6 F9H@B HC B. '* C N'
**'6F95?C:: '6I FF 'BC HHC '9L7 998 "\$\$+@%' Q5B8'
***A I GHF9A 5-B '5H5 7 <98"
+***\$\$\$(\$ A B 'B 7 ?9@5B8 "\$\$\$, \$ A B 'HB

I B @GG: C H: 9FK @9 'GD97 ÷ 98z
8-A 9BGC BG 5F9-B 'B 7 <9G"
HC @F5B7 9G 5F9.

897 A 5@G5B: @9G

"LL ± '\$%(C") O'&'
"LLL ± '\$%S(%) O
"LLLL ± "LLLLLOLLO [A]

A 5H@F-5@ 8C 'BCH G7 5@9 8F5K B: G<99HG7 5@9 *.%
<C I GB: ';< ÷ < H@A DBM@C BZ7 C @C F. B5H F5@
7 5A G@B 9F. DDQZ7 C @C F. 6@5 7?
7 CBH5 7 H/ K 9@B H5 6.
D<C G 6F C BN9

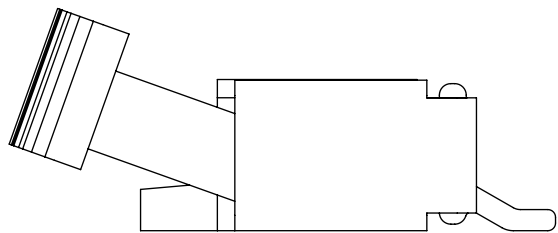
A 5L: @5 G< 5 @C K 98. "\$\$\$
A 5L: 5H J 9G± 9. "\$\$\$
: .P8K: PA @7 PA ?H PN)!LL!LL!LL!K HLLIA ?H@8BFK

samtec

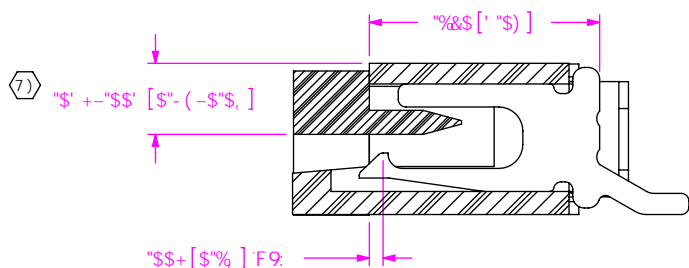
)&\$ D5F? 95GH6@ 8ZB9K '5 @5BM-B (+) \$
D<C B 9; %&L - ((! * + 5L; %&L - ()) \$(+
YIA UJ; .j@z 4 G5A H7 'W@a W@XY.)')&&

8967 F@HC B.
N9FC 'B G9F HC B: C F 7 9") a a '5 G39A 6@M
8K: "'BC"
N)!LL!LL!LL!K HLL
6M 8 95 B D %&#/%&#&\$\$\$ G< 99H% C: (

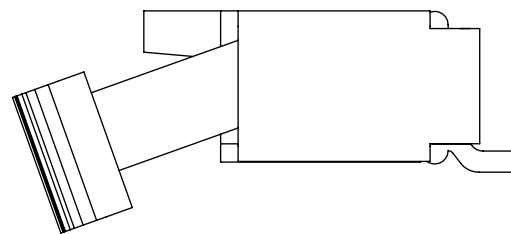
F9J €€ B `A



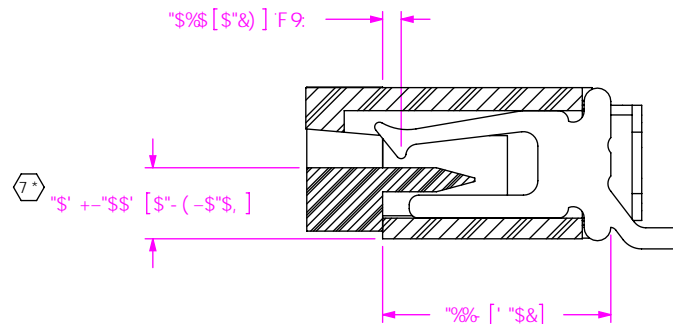
!\$%@958`GM@9`O`C`B`H`5`7`H`6`H`C`H`A`Q
fk`#k`7`5`A`7`C`D`9`B`L`



G97 HC B `5`1`5`"
!\$%@958`GM@9`
fk`#k`7`5`A`7`C`G98L`



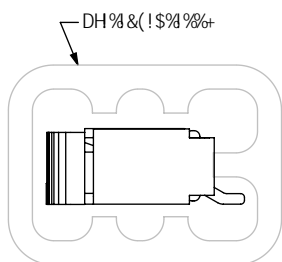
!\$&@958`GM@9`O`C`B`H`5`7`H`H`C`D`Q
fk`#k`7`5`A`7`C`D`9`B`L`



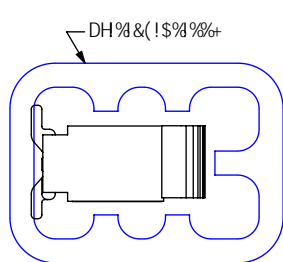
G97 HC B `5`1`5`"
!\$&@958`GM@9`
fk`#k`7`5`A`7`C`G98L`

D57?5; B; J-9K G
f1f`C`D`H`C`B`G`<`C`K`B`C`B`G`<`99H(L`

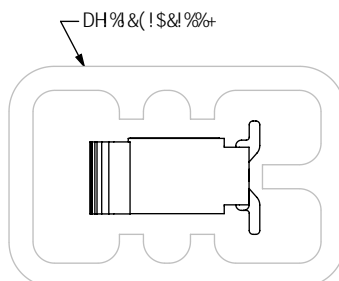
Ø5FHGC <5J9DCGHC B`;%@5898`B
GSA 98F97HC B 5G5FFCK`CB`H`69Q`



!\$%/`!\$&@958`GM@9`G
!\$(`H`F`T`!`)-`DC`G`H`C`B`G`



!\$`@958`GM@9`
!\$(`H`F`T`!`)-`DC`G`H`C`B`G`



!\$%?!\$&`!\$`
!\$(`H`F`T`!`!`)\$`DC`G`H`C`B`G`

PACKAGING TABLE

LEAD STYLE	No OF POS.	PACKAGING TUBE	PLUG
-01, -02 & -03	-04 THRU -39	PT-1-24-01-117	TP-24
	-40 THRU -50	PT-1-24-02-117	TP-24

:.P8K : PA G7 PA ?H PN)ILLILLILLIK HLLIA ?HG88FK

DFC DF 9H5 FMBC H9
H:G8C71A 98H7C B16 BG B: CFA 5HC B
7C B: 898H59588 DFC DF 9H5 FMBC
GSA H97 2 87 *588 G: 5888 H69 F90FC 81 798
CF HF58G 9F98 HC CH: 9F 8C 71A 98HGCF
8 47 @G98 HC CH: 9FGCF I 98: CF 58M
DI FDC G9 CH: 9F H: 5B H: 5HK <7 < #K 5G
C 6H5 B98 K #C I H: 9 9L DF 9098 K F #H8
7C B G98HC: GSA H97 2 87 *

8C`B`CH`G7`5`@9`8`F`5`K`B`:

G: 99H7 5 @9`%\$%

samtec

)&\$ D5F? 95GH6@ 8ZB9K`5@5BM`B`(+)%\$
D<C B9`;%&L-((!"+`.....:SL`;%&L-(,)\$ (+
YIA UJ: `b`z`4`GSA`H97`W`c`a`.....`W`X`Y`.)`&&

89G7 F@HC B:

N9FC`B`G9F`HC`B`:`C`F`7`9`")`a`a`5`G9A`6@M

8K: "BC"

N)ILLILLILLIK HLL

6M 895 B D`%&#%&#&\$\$\$`G<99H`&C`C`:`(

