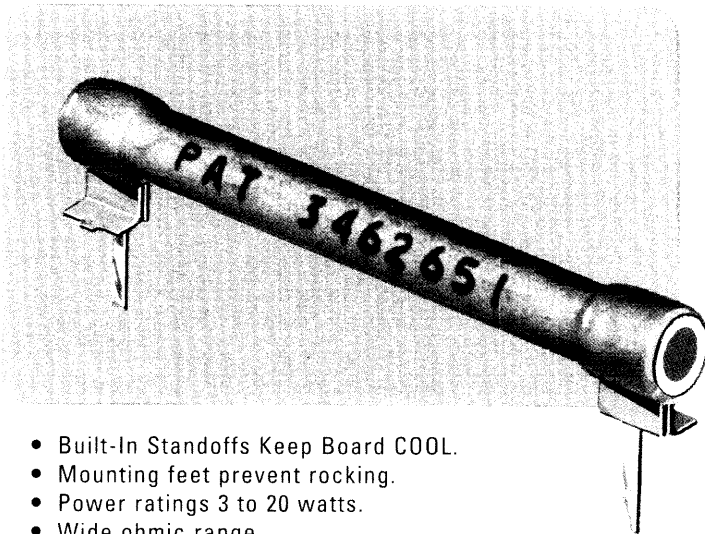




# PCB

## Printed Circuit Board RESISTORS



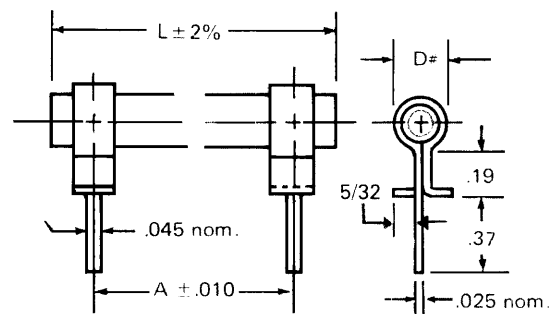
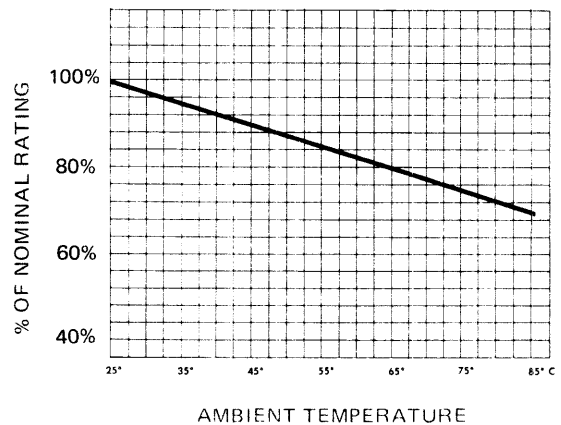
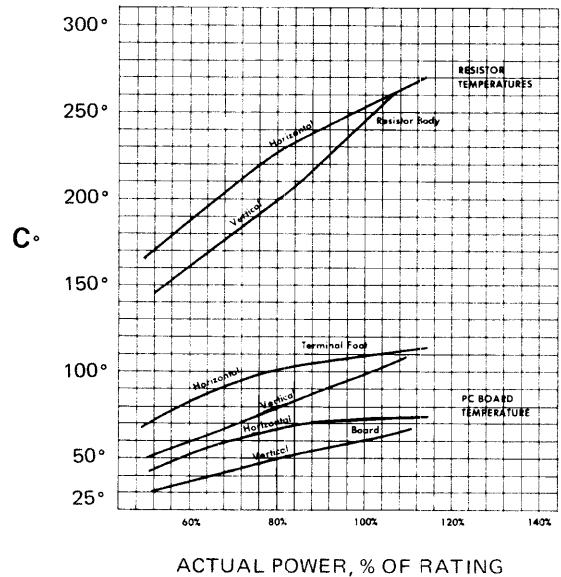
- Built-In Standoffs Keep Board COOL.
- Mounting feet prevent rocking.
- Power ratings 3 to 20 watts.
- Wide ohmic range.
- One-piece welded terminals.
- Standard pin spacing: 1/10" c-c multiples, special spacing on request.
- Rectangular pins .025 x .045 in. (mount in .078" dia. PCB holes).
- Silicone coating.
- Standard tolerances  $\pm 5\%$  over 1 ohm,  $\pm 10\%$  under 1 ohm & adjustable.
- 20 PPM upon request.
- Wattages based on 275° C rise above an ambient of 25° C.
- Non-inductive windings available (ayrton-perry winding).
- \* U.S. Patent 3,462,651. FIXED

WATTS	L	A	D#	MIN. $\Omega$ †	MAX. $\Omega$ ‡	PART NUMBER
3	7/8	0.6	5/16	.86	10K	3.5-13- $\Omega$ PCB
5	13/16	0.9	5/16	.181	19K	3.5-18- $\Omega$ PCB
7	19/16	1.3	5/16	.29	31K	3.5-24- $\Omega$ PCB
10	2	1.7	5/16	.4	43K	3.5-30- $\Omega$ PCB
15	2	1.7	13/32	.106	65K	5-32- $\Omega$ PCB
20	2 1/2	2.2	13/32	.142	88K	5-40- $\Omega$ PCB

### ADJUSTABLE

WATTS†	L	A	D#	MIN. $\Omega$ ‡	MAX. $\Omega$ ‡	PART NUMBER
15	2	1.7	13/32	.69	14K	5-32- $\Omega$ A PCB
20	2 1/2	2.2	13/32	.93	19K	5-40- $\Omega$ A PCB

† Non - standard wattages in the range of 3 - 29 watts are possible - contact M R C  
 ‡ For resistances above or below the limits shown, contact M R C  
 # Maximum measurements.



BULLETIN 14

