

REFERENCE SPECIFICATIONS

-NFC 93425 (in compliance with HE 507)

PHYSICAL CHARACTERISTICS

-INSULATOR MATERIAL: THERMOPLASTIC UL94V0
 -CONTACT MATERIAL: BRASS

-ACCESSORIES: BRASS
 -SHELLS: STEEL

ELECTRICAL CHARACTERISTICS

-NOMINAL CURRENT: 7.5A
 -CONTACT RESISTANCE: <= 7.3 m ohms
 -CONTACT/CONTACT : >=1000 V
 -CONTACT/GROUND : >=1200 V
 -INSULATION RESISTANCE: >=5000 MOhms

ENVIRONMENTAL CHARACTERISTICS

- CLIMATIC CATEGORY: 55/125/21
 TEMPERATURE RANGE -55°C TO +125°C
 DAMP HEAT STEADY STATE 21 DAYS
 SALT SPRAY 48 HOURS

MECHANICAL CHARACTERISTICS

RETENTION AGAINST TORQUE: - Threaded insert: 0.7 N.m minimum
 - Female screw : 0.5 N.m minimum

NOTE RoHS INFORMATION

- The "LF" products meet european union Directives and other country regulations as described in GS-22-008.
- Termination plating spec:
 Ni + Gold
- Active area plating spec:
 Ni + Gold
- Shell plating :2 to 4µm Cu + 3 to 10µmm Sn,pure bright
- Accessories: Sn pure bright
- Packaging spec: See GS-14-920

DBL13W3P043A00LF

Series

Shell size: E A B C D
 see sheet 3
 Front accessory definition
 see sheet 2

Blank :without accessory
 L :threaded insert M3
 O :threaded insert UNC 4-40

Layout of contacts (see sheet 3)

Contacts
 P :Pin

Plating

Blank signal solder bucket 200 matings/unmatings
 043 signal solder bucket 500 matings/unmatings

PCB accessory definition

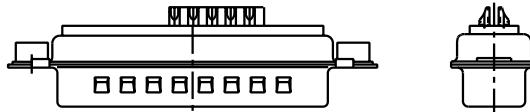
A without accessory on PCB

Power contacts

00 without power contact

See note RoHS

13W3 FOR EXAMPLE

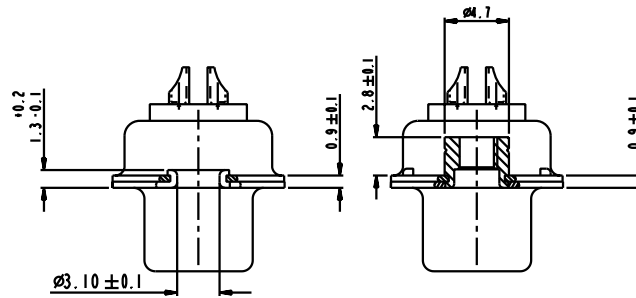


www.fciconnect.com		surface	tolerance	projection	size	Scale
Dr M PESSON 11/10/05		✓		⊕	A2	2:1
Eng 11/10/05		P LEGARE		Product family		Spec ref
Chr				Material		SEE NOTES
Appr				ECN		
Title		SUB MALE DW		deg no		Rev.
mixed power+solder bucket				C01-8639-2307		A
catalog no		CUSTOMER COPY		sheet 1 of 7		

l	tr	ecn no	dr	date
A		LS05-010	MPE	11/10/05
-	-	-	-	-
-	-	-	-	-
-	-	-	-	-
-	-	-	-	-
-	-	-	-	-
-	-	-	-	-

This document contains confidential information. Reproduction, communication, distribution, or disclosure of this document is strictly prohibited without the written consent of FCI. © Copyright FCI.

This document contains confidential information. Reproduction, communication, distribution, or disclosure of this document is strictly prohibited without the written consent of FCI. © Copyright FCI.



FRONT ACCESSORY	Blank without	L insert M3
		O insert UNC 4.40
PCB ACCESSORIES	A without	A without

PART NUMBER	MATINGS/ UNMATINGS	FRONT ACCESSORY	PCB ACCESSORIES
D*xWxPA00LF	200	without	without
D*LxWxPA00LF	200	insert M3	without
D*OxWxPA00LF	200	insert UNC 4.40	without
D*xWxP043A00LF	500	without	without
D*LxWxP043A00LF	500	insert M3	without
D*OxWxP043A00LF	500	insert UNC 4.40	without

shell size	LAYOUTS
#	xWx
E	5W1
A	11W1
A	7W2
B	21W1
B	17W2
B	13W3
B	9W4
C	25W3
C	21WA4
C	27W2
D	47W1
D	24W7
D	36W4

SCALE : 4

FCI www.fciconnect.com		surface <input checked="" type="checkbox"/>	tolerance	projection
Dr	M PESSON	11/10/05	Product family	size A2 Scale 2:1
Eng	11/10/05	P LEGARE	Spec ref	
Chr			Material	SEE NOTES ECN
Appr				
Title SUB MALE DW		cat no	C01-8639-2307	
mixed power+solder bucket			Rev.	A
catalog no		CUSTOMER COPY		sheet 2 of 7

All rights are reserved. Reproduction in whole or in part without the written permission of FCI is prohibited. FCI, Copyright © 2005.

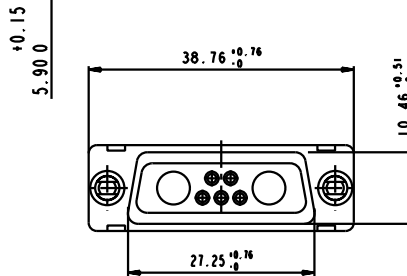
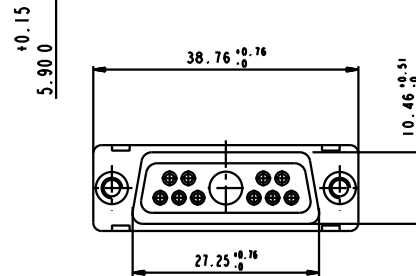
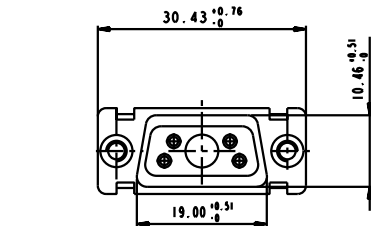
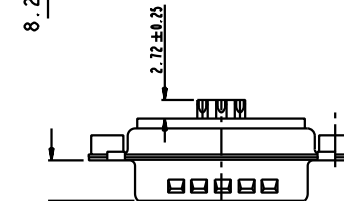
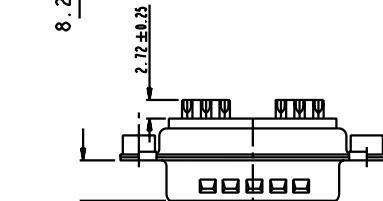
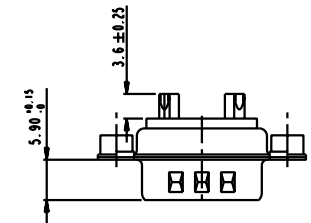
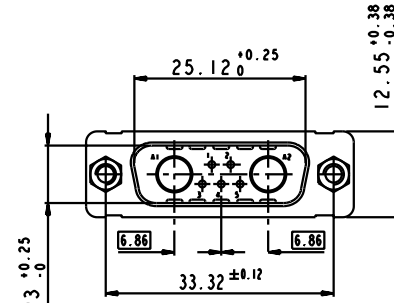
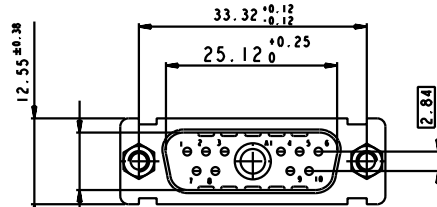
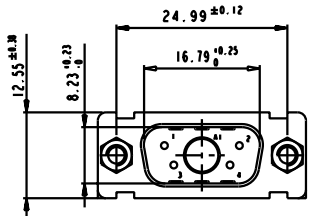
A
FCI

All rights are reserved. Reproduction in whole or in part without the written permission of FCI is prohibited. FCI, Copyright © 2005.

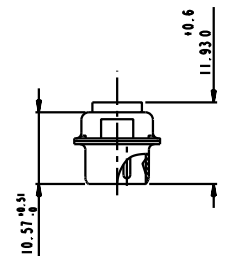
5W1

11W1

7W2



SIDE VIEW FOR LAYOUTS: E A B C



Floating signal contacts

For reproduction purposes, reproduction is permitted in connection with the product. Property of FCI. Copyright FCI.

FCI

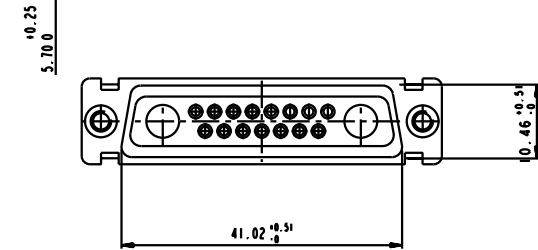
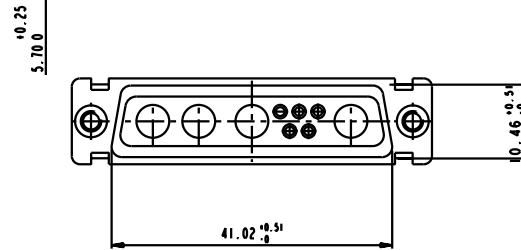
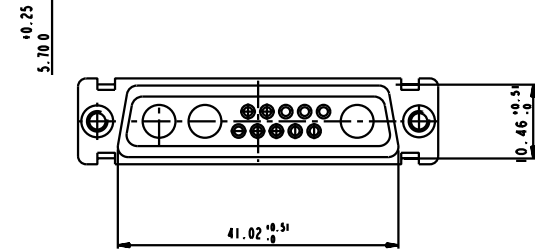
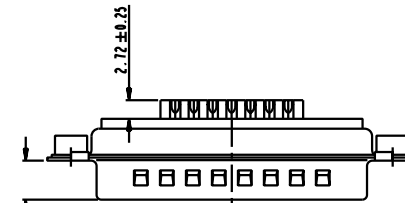
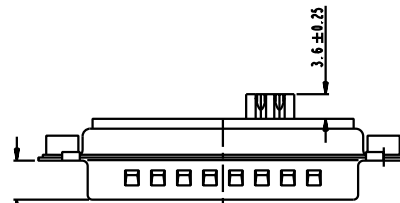
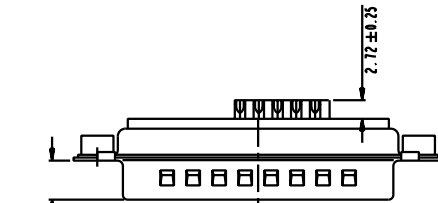
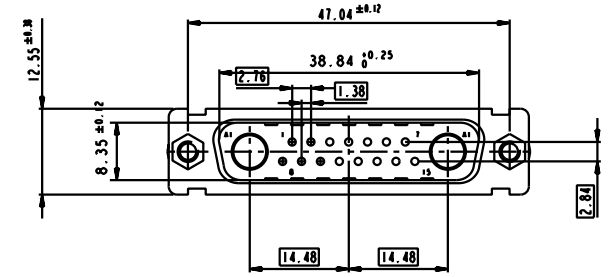
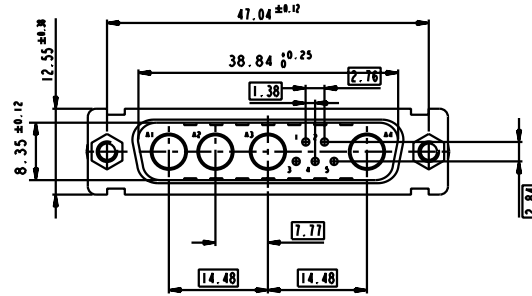
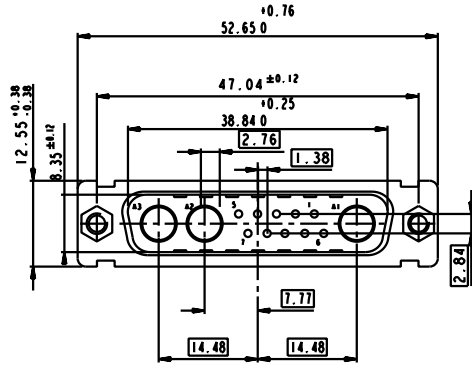
For reproduction purposes, reproduction is permitted in connection with the product. Property of FCI. Copyright FCI.

FCI www.fciconnect.com		surface <input checked="" type="checkbox"/>	tolerance	projection
Dr M PESSON	11/10/05	Product family		size A2
Eng 11/10/05	P LEGARE	Spec ref		Scale 2:1
Chr		Material		ECN
Appr		SEE NOTES		
Title SUB MALE DW			Part no C01-8639-2307	Rev. A
mixed power+solder bucket			catalog no	CUSTOMER COPY
				sheet 3 of 7

13W3

9W4

17W2



Floating signal contacts

All rights are reserved. Reproduction or distribution of this drawing without the written permission of FCI is prohibited. Property of FCI. Copyright © 2005.

FCI

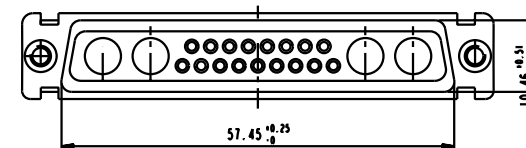
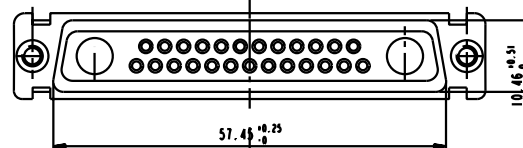
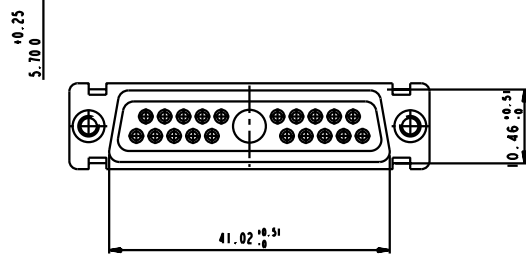
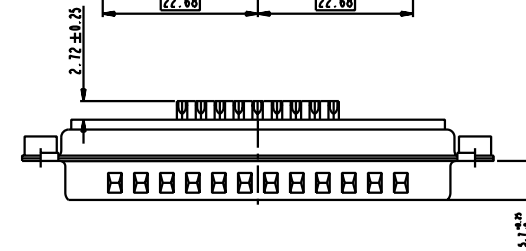
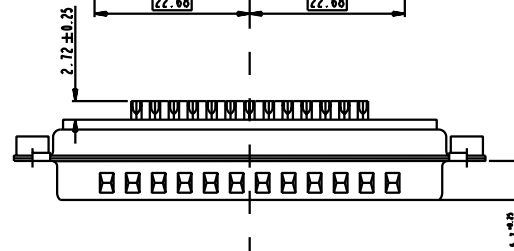
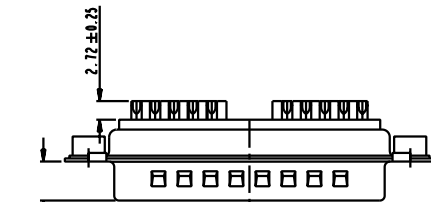
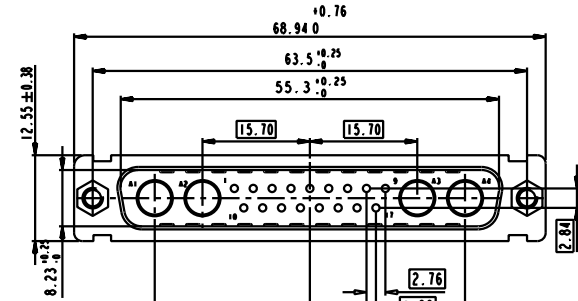
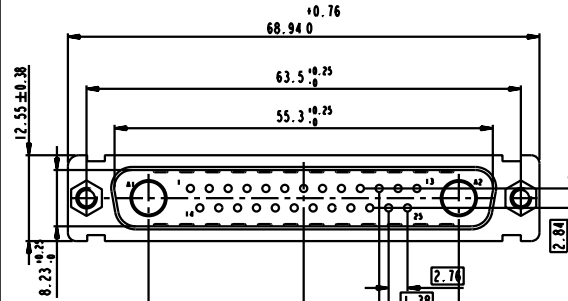
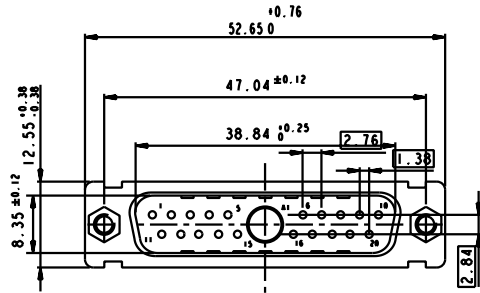
All rights are reserved. Reproduction or distribution of this drawing without the written permission of FCI is prohibited. Property of FCI. Copyright © 2005.

FCI www.fciconnect.com		surface <input checked="" type="checkbox"/>	tolerance	projection
Dr M PESSON	11/10/05	Product family		size A2
Eng 11/10/05	P LEGARE	Spec ref		Scale 2:1
Chr		Material		ECN
Appr		SEE NOTES		
Title SUB MALE DW		dag no	C01-8639-2307	
mixed power+solder bucket				Rev. A
catalog no		CUSTOMER COPY		sheet 4 of 7

21W1

27W2

21WA4



For rights of use, see the license agreement. All rights reserved. Reproduction or use without the prior written consent of FCI is prohibited. Copyright © 2005 FCI. All rights reserved. Reproduction or use without the prior written consent of FCI is prohibited.

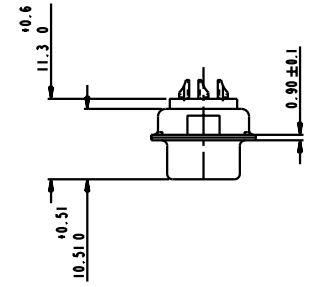
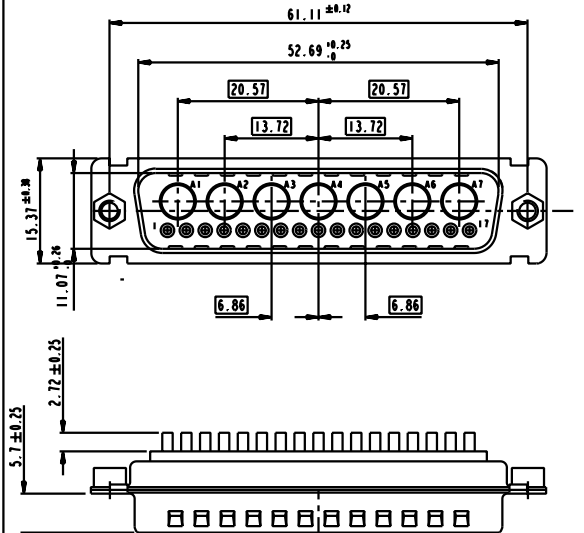
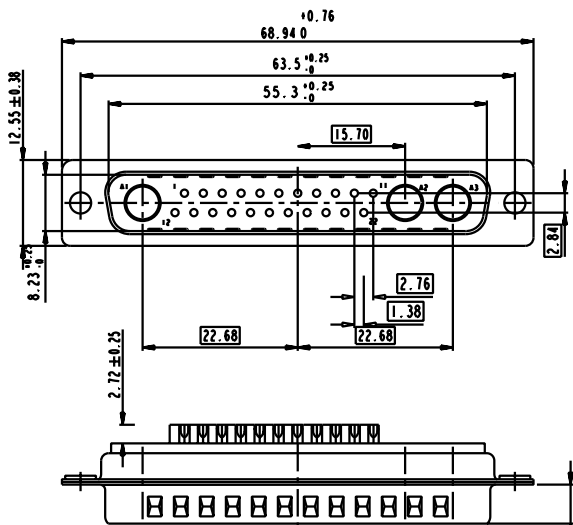
FCI

FCI www.fciconnect.com		surface <input checked="" type="checkbox"/>	tolerance	projection
Dr M PESSON	11/10/05	Product family		size A2
Eng 11/10/05	P LEGARE	Spec ref		Scale 2:1
Chr		Material		ECN
Appr		SEE NOTES		
Title SUB MALE DW		dag no C01-8639-2307	Rev. A	
mixed power+solder bucket		CUSTOMER COPY		
catalog no		sheet 5 of 7		

25W3

24W7

SIDE VIEW FOR
LAYOUT: D



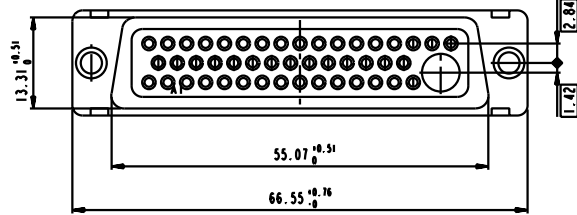
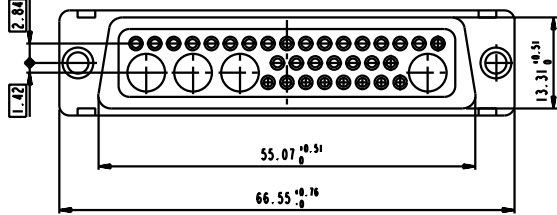
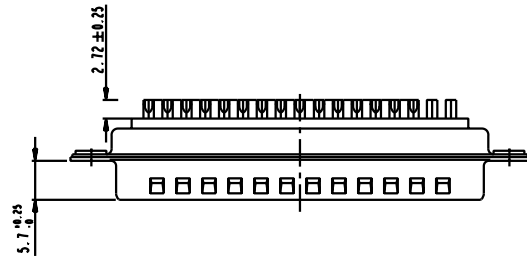
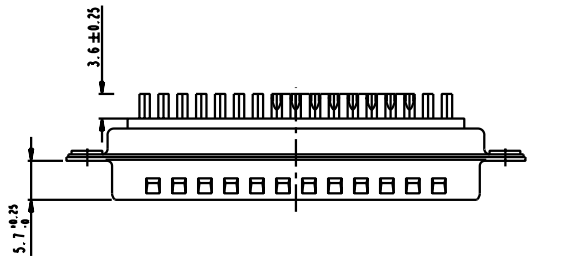
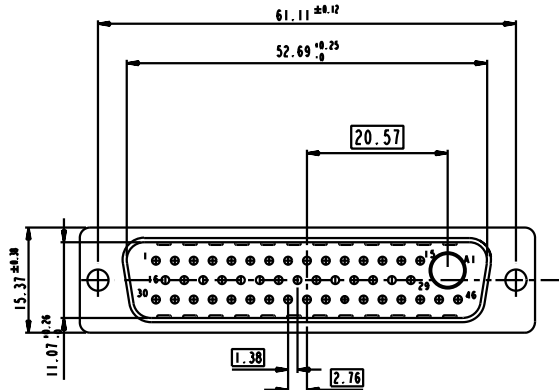
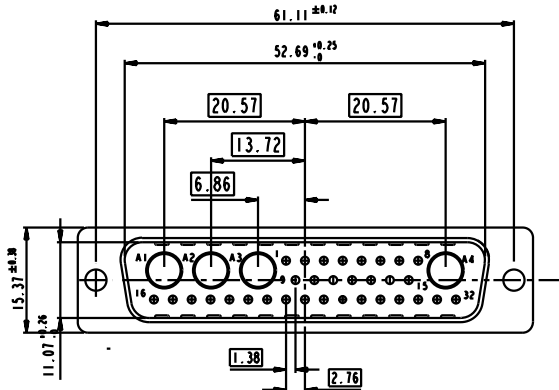
This document contains FCI's confidential information. Reproduction or distribution of this document is prohibited without the written consent of FCI. © Copyright FCI.

All rights are reserved. Reproduction or distribution of this document is prohibited without the written consent of FCI. © Copyright FCI.

FCI www.fciconnect.com		surface <input checked="" type="checkbox"/>	tolerance	projection
Dr M PESSON	11/10/05	Product family		size A2
Eng 11/10/05	P LEGARE	Spec ref		Scale 2:1
Chr		Material		ECN
Appr		SEE NOTES		
Title SUB MALE DW			cat no C01-8639-2307	Rev. A
mixed power+solder bucket			CUSTOMER COPY	sheet 6 of 7

36W4

47W1



Floating signal contacts

All rights are reserved. Reproduction or distribution of this drawing without the written permission of FCI is prohibited.
 All rights are reserved. Reproduction or distribution of this drawing without the written permission of FCI is prohibited.

FCI

All rights are reserved. Reproduction or distribution of this drawing without the written permission of FCI is prohibited.
 All rights are reserved. Reproduction or distribution of this drawing without the written permission of FCI is prohibited.

FCI www.fciconnect.com		surface <input checked="" type="checkbox"/>	tolerance	projection
Dr M PESSON	11/10/05	Product family		size A2
Eng 11/10/05	P LEGARE	Spec ref		Scale 2:1
Chr		Material		ECN
Appr		SEE NOTES		
Title SUB MALE DW		cat no C01-8639-2307	Rev. A	
mixed power+solder bucket		CUSTOMER COPY		
catalog no		sheet 7 of 7		