

Right-angle through hole type male connector for PCB LPC-() (T) M2L()

2 mm pitch connector

For PCB

Right-angle Through hole

RoHS

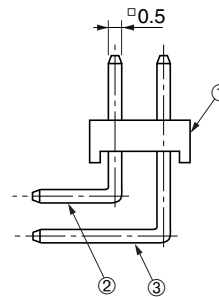
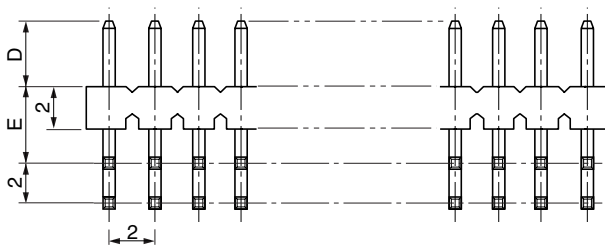
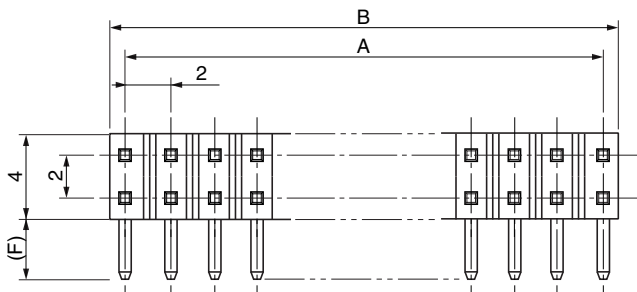


● Configuration of product Part No.

LPC- () (T) M2L ()

① ② ③ ④

- ① Series name
- ② No. of contacts: 2-50
- ③ Length No. of contact:
Refer to the table of dimensions below.
- ④ Contact plating
+S: Tin plate
G : Gold plate



● Dimensions

Part No.	A	B
LPC-2(T)M2L()	-	2
LPC-4(T)M2L()	2	4
LPC-6(T)M2L()	4	6
LPC-8(T)M2L()	6	8
LPC-10(T)M2L()	8	10
LPC-12(T)M2L()	10	12
LPC-14(T)M2L()	12	14
LPC-16(T)M2L()	14	16
LPC-18(T)M2L()	16	18
LPC-20(T)M2L()	18	20
LPC-22(T)M2L()	20	22
LPC-24(T)M2L()	22	24
LPC-26(T)M2L()	24	26
LPC-28(T)M2L()	26	28
LPC-30(T)M2L()	28	30
LPC-32(T)M2L()	30	32
LPC-34(T)M2L()	32	34
LPC-36(T)M2L()	34	36
LPC-38(T)M2L()	36	38
LPC-40(T)M2L()	38	40
LPC-42(T)M2L()	40	42
LPC-44(T)M2L()	42	44
LPC-46(T)M2L()	44	46
LPC-48(T)M2L()	46	48
LPC-50(T)M2L()	48	50

● Components

①	Insulator
②	Short contacts
③	Long contacts

Because some combinations of "Configurations of Product Part No.", are under consideration for development, please contact us for availability details.

Part No.	D	E	F
LPC-()M2L	3		3
LPC-()T3M2L	4.4	3	2
LPC-()T4M2L	3		2.4
LPC-()T6M2L	3.5	3.5	3
LPC-()T10M2L	3	2.25	2.6
LPC-()T15M2L	3.5	2.4	1.8
LPC-()T16M2L	2	3	2.5

Mating connectors: LPC series female connectors or shunt plugs