

# POWER DIVIDERS, 2 WAY - 0°

## CONNECTORIZED PACKAGES

Power Dividers

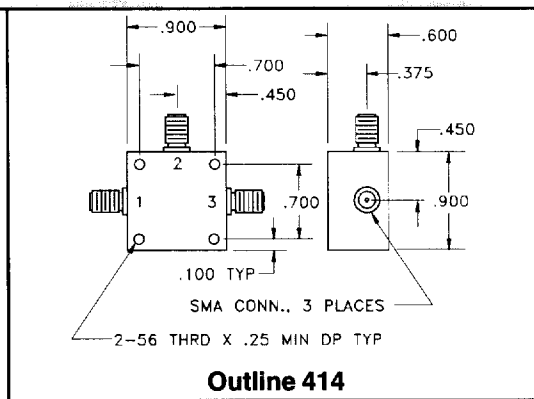
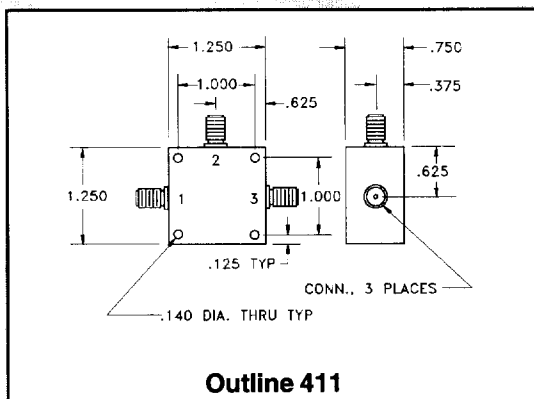
Frequency Range (MHz)	Insertion Loss (dB) max.	Isolation (dB) min.	Amplitude Balance (dB) max.	Phase Balance (Deg) max.	VSWR max.	(1) Input Power (watts) max.	P/N
0.004-60	0.8	25	0.1	1.0	1.30:1	1	P2-01-*
0.3-60	0.5	30	0.2	1.0	1.30:1	1	P2-02-*
0.5-100	0.5	30	0.2	2.0	1.30:1	1	P2-03-*
0.5-300	0.7	25	0.3	2.0	1.30:1	1	P2-04-*
0.1-450	0.8	25	0.3	2.0	1.30:1	1	P2-05-*
1-500	0.8	25	0.3	2.0	1.30:1	1	P2-06-*
5-500	0.7	30	0.3	2.0	1.20:1	1	P2-07-*
100-500	0.5	30	0.2	2.0	1.30:1	1	P2-08-*
5-1000	1.0	25	0.3	3.0	1.30:1	1	P2-09-*
10-1000	0.8	30	0.3	3.0	1.30:1	1	P2-10-*
20-1000	0.8	30	0.3	3.0	1.30:1	1	P2-11-*
800-1000	0.6	25	0.4	2.0	1.40:1	10	P2-12-411
5-1500	1.3	25	0.3	4.0	1.50:1	1	P2-13-*
20-1500	1.3	25	0.3	4.0	1.50:1	1	P2-14-*
5-2000	1.5	22	0.4	6.0	1.50:1	1	P2-15-*
50-2000	1.4	23	0.4	6.0	1.50:1	1	P2-16-*
200-2000	1.2	25	0.4	6.0	1.50:1	1	P2-17-*
5-2500	1.8	20	0.4	6.0	1.50:1	1	P2-19-*
200-2500	1.6	22	0.4	6.0	1.50:1	1	P2-20-*
5-3000	2.5	15	0.5	6.0	1.60:1	1	P2-21-411

\* Available in outline # 411, 414 - SMA female connectors standard, refer to page 98 for more information. 75 Ohm or higher power models available upon request, consult factory.

Note: (1) For Load VSWR better than 1.2:1.

### Port Configuration

Outline	Input	Outputs
411	2	1,3
414	2	1,3



**PULSAR** MICROWAVE CORPORATION