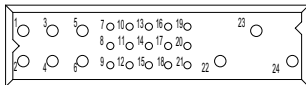




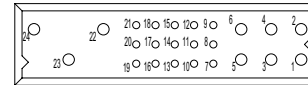
The PCIB Series encompasses all of the features of the PCIH Series in a smaller package. Reliability, high current capacity and many system management connections make the PCIB Series ideal for use in telecom, computer, information systems and industrial applications.

## PCIB SERIES CONTACT VARIANTS

FACE VIEW OF MALE AND REAR VIEW OF FEMALE

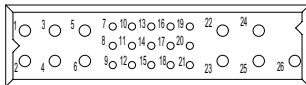


**PCIB24W9 VARIANT**

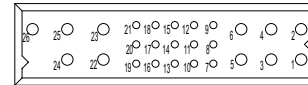


**PCIB24W9R VARIANT (Inverted Termination)**

9 Size 16 Power Contacts and 15 Size 22 Signal Contacts

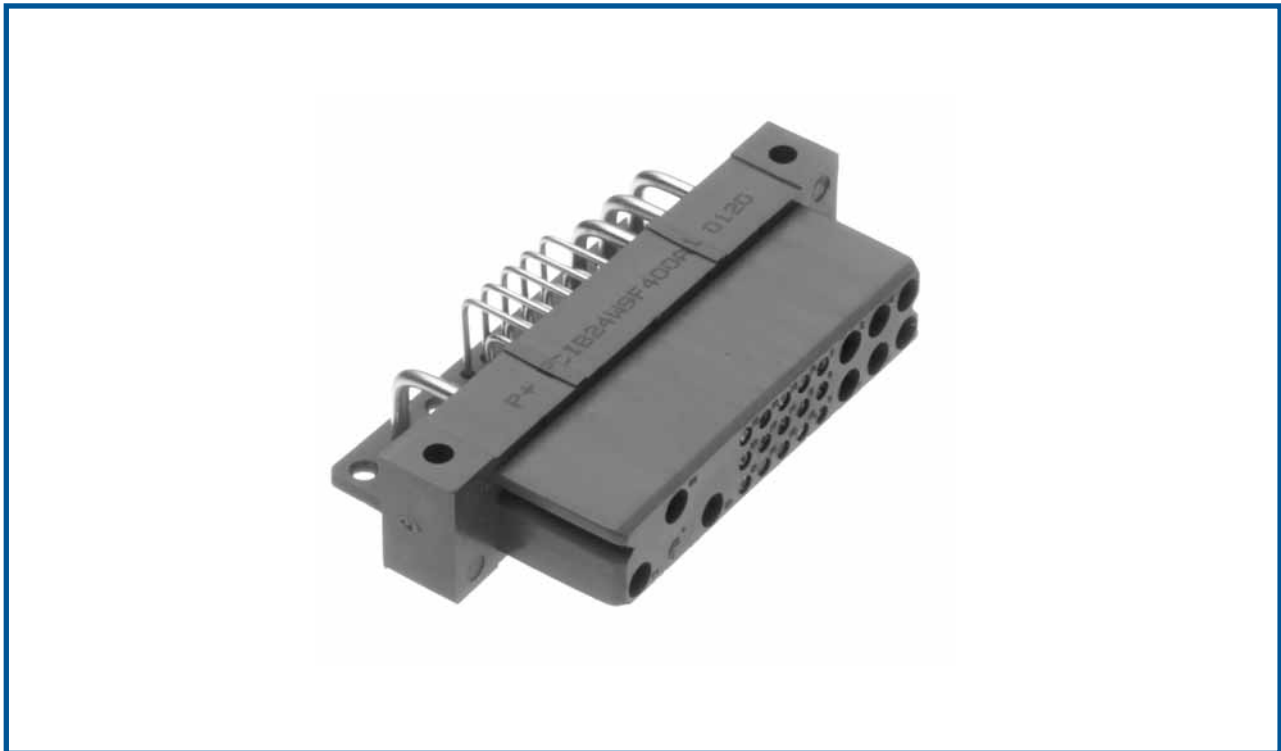


**PCIB26W11 VARIANT**



**PCIB26W11R VARIANT (Inverted Termination)**

11 Size 16 Power Contacts and 15 Size 22 Signal Contacts





**MATERIALS AND FINISHES:**

<b>Insulator:</b>	Glass-filled polyester, UL 94V-0, blue color.
<b>Contacts:</b>	Size 16 contacts: High conductivity precision-machined copper alloy. Size 22 contacts: Precision-machined copper alloy. Plating: gold flash over nickel. Other plating options available, refer to Step 7 on page 89.
<b>Mounting Screws:</b>	Steel, zinc plated.
<b>Jackscrews:</b>	Stainless steel, passivated.

**ELECTRICAL CHARACTERISTICS:**

**PCIB Contact Current Ratings, per UL 1977**

*See Temperature Rise Curves on page 5 for details.*

**PCIB24W9:**

Size 16 Power Contacts: Positions 22, 23, and 24:	45 amperes continuous, all contacts under load.
Positions 1 through 6:	35 amperes continuous, all contacts under load.
Size 22 Signal Contacts:	3 amperes nominal rating.

**PCIB26W11:**

Size 16 Power Contacts:	34 amperes continuous, all contacts under load.
Size 22 Signal Contacts:	3 amperes nominal rating.

**Initial Contact Resistance; maximum:**

<b>Size 16 Contact:</b>	0.0007 ohms maximum.
<b>Size 22 Contact:</b>	0.004 ohms maximum. Per IEC 512-2, Test 2b.

<b>Insulator Resistance:</b>	5 G ohms per IEC 512-2, Test 3a.
------------------------------	----------------------------------

**Voltage Proof:**

**PCIB24W9:**

Contacts 22, 23 and 24:	3,000 V r.m.s.
Contacts 1 through 6:	1,500 V r.m.s.
Contacts 7 through 21:	1,000 V r.m.s.

**PCIB26W11:**

Contacts 1 through 6 and 22 through 26:	1,500 V r.m.s.
Contacts 7 through 21:	1,000 V r.m.s.

**Creepage and Clearance**

**Distance; minimum:**

**PCIB24W9:**

Contact 24 to Contact 22:	3.2mm [0.126 inch]
Contact 23 to Contact 22:	3.2mm [0.126 inch]
Contact 24 to Signal Contacts:	6.4mm [0.252 inch]
Contact 23 to Signal Contacts:	6.4mm [0.252 inch]
Contact 24 to Contact 23:	2.5mm [0.098 inch]
Contact 22 to Signal Contacts:	2.0mm [0.079 inch]

**PCIB26W11:**

Contact 22 to Signal Contacts:	2.0mm [0.079 inch]
--------------------------------	--------------------

**Working Voltage:**

**PCIB24W9:**

Contacts 22, 23 and 24:	1,000 V r.m.s.
Contacts 1 through 6:	500 V r.m.s.
Contacts 7 through 21:	333 V r.m.s.

**PCIB26W11:**

Contacts 1 through 6 and 22 through 26:	500 V r.m.s.
Contacts 7 through 21:	333 V r.m.s.

**MECHANICAL CHARACTERISTICS:**

<b>Blind Mating System:</b>	Male and female connector bodies provide "lead-in" for 1.3 mm [0.050 inch] diametral misalignment.
<b>Polarization:</b>	Provided by connector body design.
<b>Removable Contacts:</b>	Install contact from rear of insulator; release from front of insulator. Size 16 and 22 female contacts feature "Closed Entry" design for highest reliability.

**Removable Contact Retention in Connector Body:**

<b>Size 16 Contacts:</b>	67 N [15 lbs.]
<b>Size 22 Contacts:</b>	27 N [6 lbs.]

**Fixed Contacts:**

Printed board terminations, both straight and right angle (90°). Size 16 female contacts feature "Closed Entry" design. Size 22 feature rugged "Robi-D Open Entry" contact design. "Closed Entry" contacts available, consult Technical Sales.

**Fixed Contact Retention in Connector Body:**

<b>Size 16 Contacts:</b>	45 N [10 lbs.]
<b>Size 22 Contacts:</b>	27 N [6 lbs.]

**Resistance to Solder Heat:**

260°C [500°F] for 10 seconds duration per IEC 512-6, Test 12e, 25-watt soldering iron.

**Sequential Contact Mating System:**

<b>PCIB24W9:</b>	First mate contact 22 and last mate contact position 7.
<b>PCIB26W11:</b>	Last mate contact position 7.

*Consult Technical Sales for customer specified sequential mating.*

**Safety "Recessed in Insulator" Contacts:**

The following size 16 contacts are recessed 5.00 mm [0.197 inch] below the face of the female connector insulator per safety requirements. Contact positions 23 and 24. None

<b>PCIB24W9:</b>	None
<b>PCIB26W11:</b>	None

**Compliant Terminations:**

Size 16 and 22 contacts are available with Compliant Contact Terminations.

**Printed Board Mounting:**

Mounting holes provided in connector body for printed board mounting. Self-tapping screws are available.

**Mechanical Operations:**

250 couplings, minimum.

**CLIMATIC CHARACTERISTICS:**

<b>Working Temperature:</b>	-55°C to +125°C.
-----------------------------	------------------



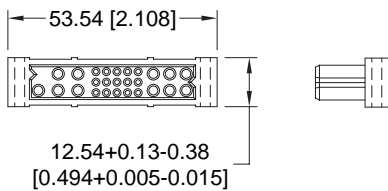
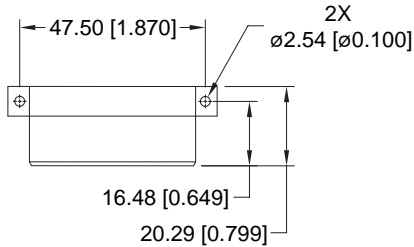
**For RoHS options see page 89.**



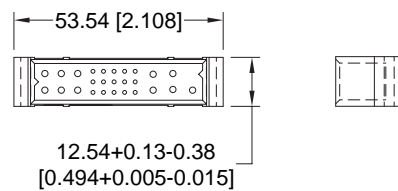
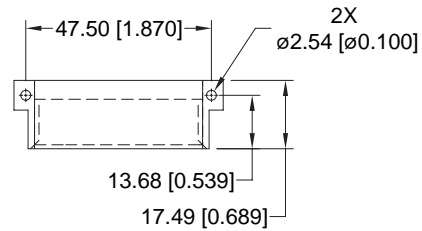
### PCIB CONNECTOR OUTLINE DIMENSIONS

#### RIGHT ANGLE (90°) BOARD MOUNT CONNECTOR

##### FEMALE CONNECTOR

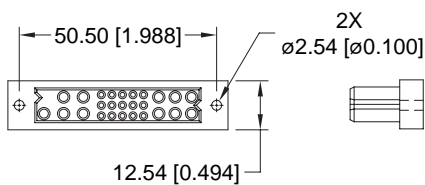
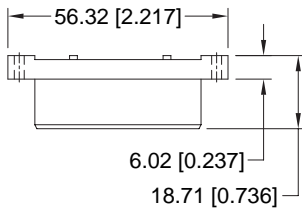


##### MALE CONNECTOR

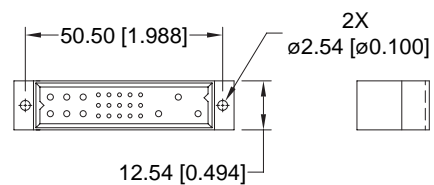
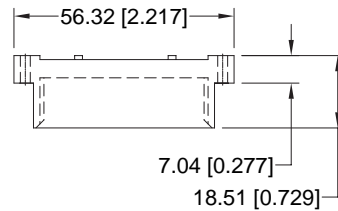


#### STRAIGHT BOARD MOUNT CONNECTOR

##### FEMALE CONNECTOR

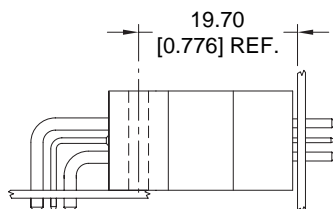


##### MALE CONNECTOR

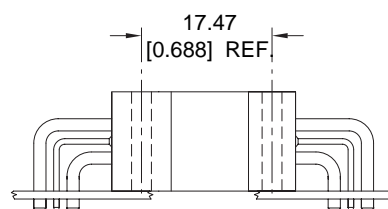


### PCIB CONNECTOR MATING DIMENSIONS

(FULLY MATED)



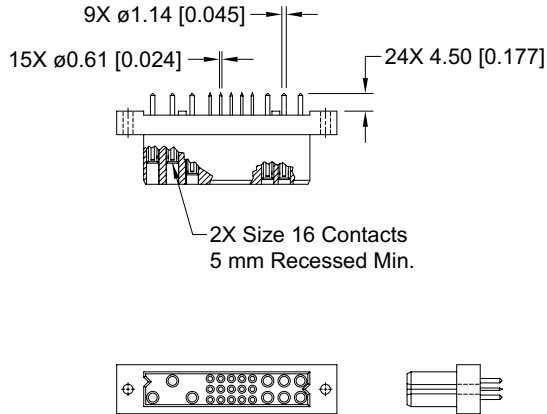
Right Angle (90°) Board  
Mount Male to Straight  
Board Mount or Panel  
Mount Female



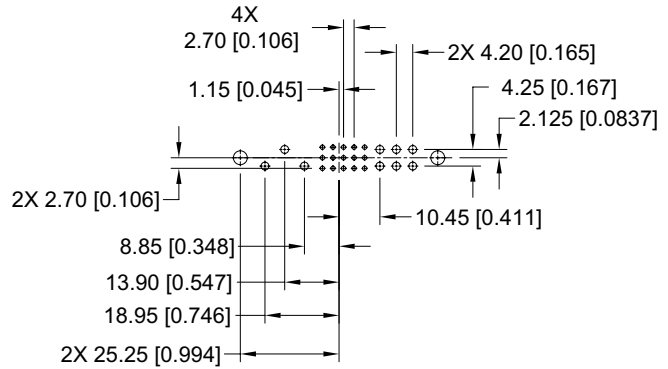
Right Angle (90°)  
Board Mount Male to  
Right Angle (90°)  
Board Mount Female

## FEMALE STRAIGHT SOLDER CONNECTOR CODE 3

STANDARD PART NUMBER  
**PCIB24W9F300A1**



CONNECTOR DIMENSIONS



CONTACT HOLE PATTERN

**Note:** See below for suggested printed board hole sizes.

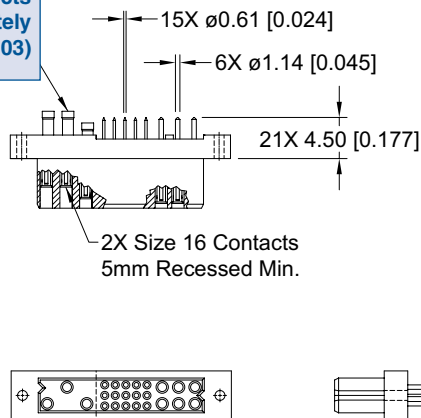
## FEMALE STRAIGHT SOLDER CONNECTOR WITH A.C. PASS-THROUGH CODE 3 WITH MOS\* -246.5

CRIMP CONTACTS ARE NOT SUPPLIED WITH CONNECTOR AND MUST BE ORDERED SEPARATELY

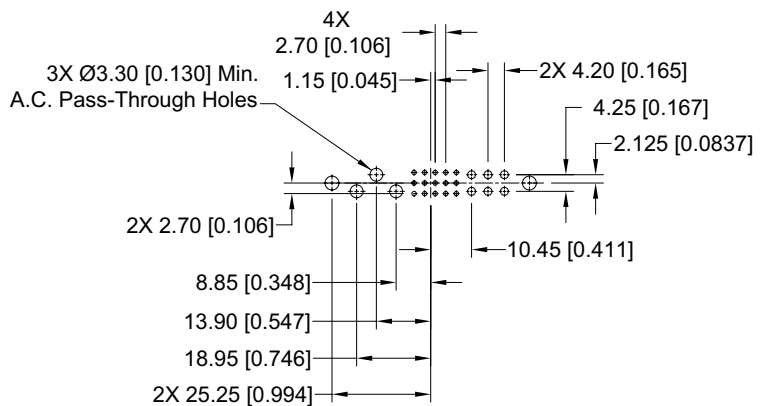
LOW PROFILE PART NUMBER  
**PCIB24W9F300A1-246.5**

\* For MOS descriptions,  
see chart on pages 111-112.

Crimp contacts  
ordered separately  
(see pages 102-103)



CONNECTOR DIMENSIONS



CONTACT HOLE PATTERN

### SUGGESTED PRINTED BOARD HOLE SIZES:

- Suggest Ø1.00 [0.039] holes for size 22 contact holes.
- Suggest Ø1.60 [0.063] holes for size 16 contact holes.
- Suggest Ø3.56±0.08 [0.140±0.003] holes for connector mounting holes.

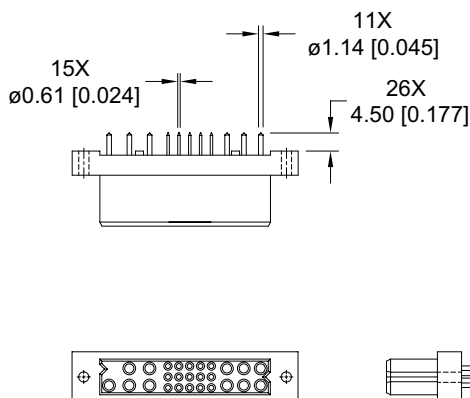
DIMENSIONS ARE IN MILLIMETERS (INCHES).  
ALL DIMENSIONS ARE SUBJECT TO CHANGE.



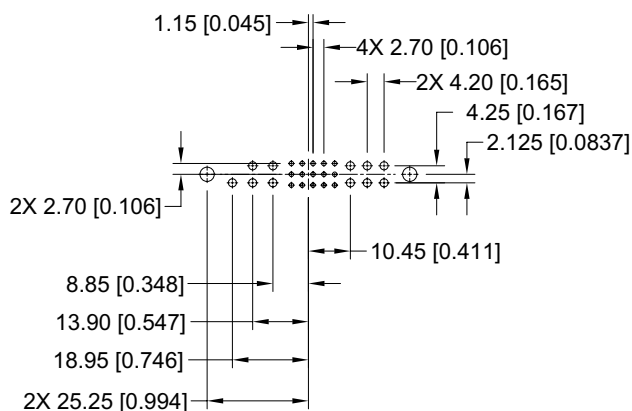
# STRAIGHT SOLDER CONNECTOR, FEMALE

## FEMALE STRAIGHT SOLDER CONNECTOR CODE 3

STANDARD PART NUMBER  
**PCIB26W11F300A1**



CONNECTOR DIMENSIONS



CONTACT HOLE PATTERN

Note: See below for suggested printed board hole sizes.

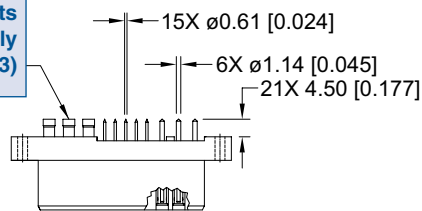
## FEMALE STRAIGHT SOLDER CONNECTOR WITH A.C. PASS-THROUGH CODE 3 WITH MOS\* -246.6

CRIMP CONTACTS ARE NOT SUPPLIED WITH CONNECTOR AND MUST BE ORDERED SEPARATELY

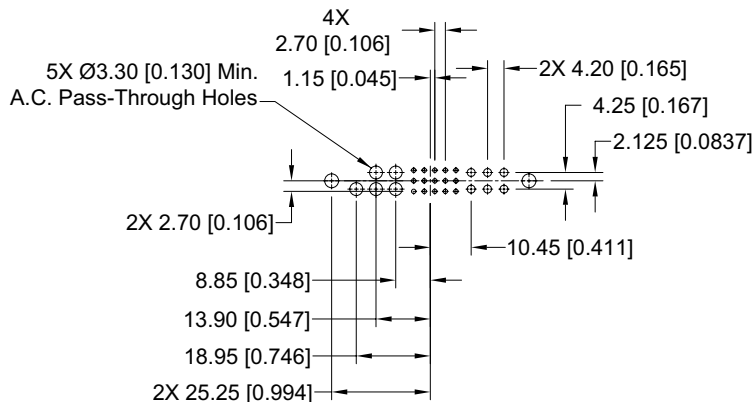
LOW PROFILE PART NUMBER  
**PCIB26W11F300A1-246.6**

\* For MOS descriptions,  
see chart on pages 111-112.

Crimp contacts  
ordered separately  
(see pages 102-103)



CONNECTOR DIMENSIONS



CONTACT HOLE PATTERN

### SUGGESTED PRINTED BOARD HOLE SIZES:

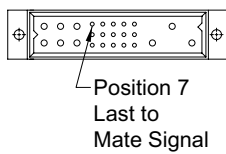
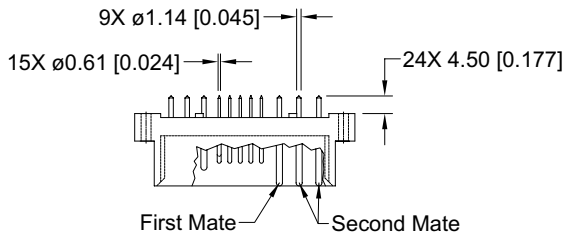
Suggest Ø1.00 [0.039] holes for size 22 contact holes.

Suggest Ø1.60 [0.063] holes for size 16 contact holes.

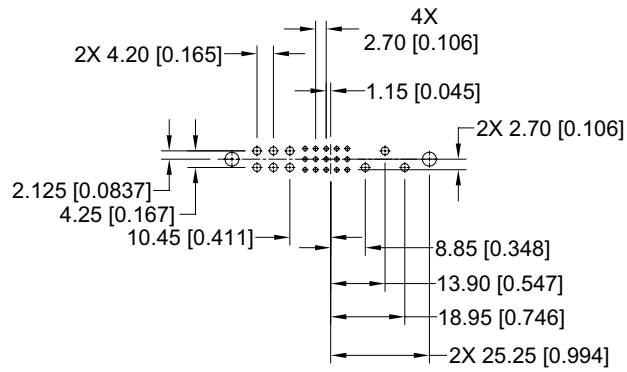
Suggest Ø3.56±0.08 [0.140±0.003] holes for connector mounting holes.

**MALE STRAIGHT SOLDER CONNECTOR  
CODE 3**

STANDARD PART NUMBER  
**PCIB24W9M300A1**



**CONNECTOR DIMENSIONS**

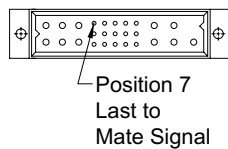
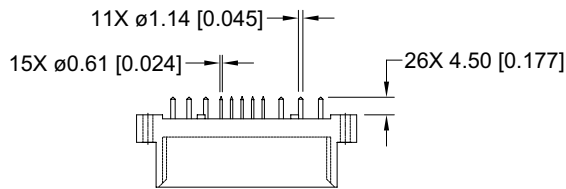


**CONTACT HOLE PATTERN**

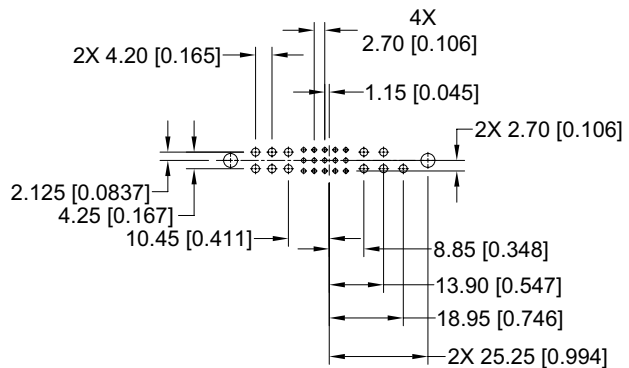
**Note:** See below for suggested printed board hole sizes.

**MALE STRAIGHT SOLDER CONNECTOR  
CODE 3**

STANDARD PART NUMBER  
**PCIB26W11M300A1**



**CONNECTOR DIMENSIONS**



**CONTACT HOLE PATTERN**

**SUGGESTED PRINTED BOARD HOLE SIZES:**

Suggest  $\varnothing 1.14$  [0.045] holes for size 22 contact holes.  
Suggest  $\varnothing 2.03$  [0.080] holes for size 16 contact holes.  
Suggest  $\varnothing 3.56 \pm 0.08$  [0.140  $\pm$  0.003] holes for connector mounting holes.

DIMENSIONS ARE IN MILLIMETERS (INCHES).  
ALL DIMENSIONS ARE SUBJECT TO CHANGE.

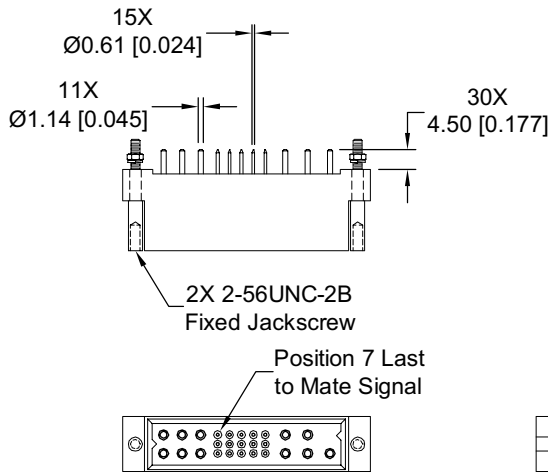


### MALE STRAIGHT SOLDER CONNECTOR WITH JACKSCREW SYSTEM CODE 3 WITH MOS\* -444.0

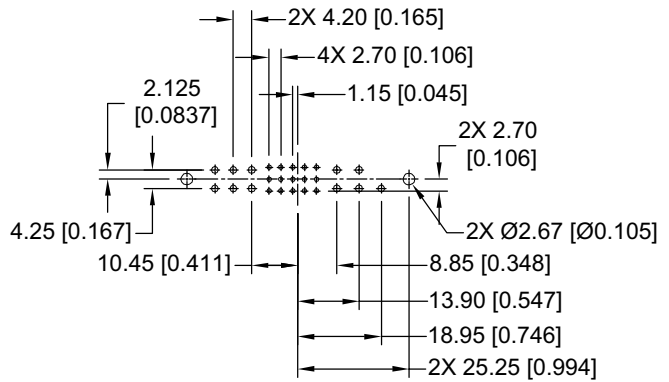
OTHER JACKSCREW LENGTH OPTIONS AVAILABLE, CONTACT TECHNICAL SALES FOR DETAILS

STANDARD PART NUMBER  
PCIB26W11M300A1-444.0

*\* For MOS descriptions,  
see chart on pages 111-112.*



**CONNECTOR DIMENSIONS**



**CONTACT HOLE PATTERN**

**Note:** See below for suggested printed board hole sizes.

#### SUGGESTED PRINTED BOARD HOLE SIZES:

Suggest Ø1.14 [0.045] holes for size 22 contact holes.

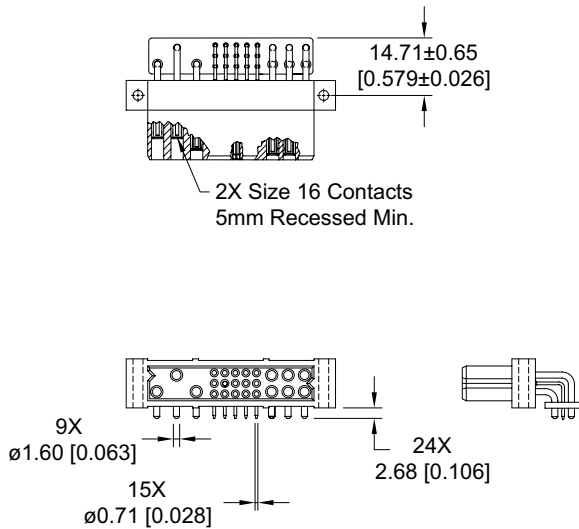
Suggest Ø2.03 [0.080] holes for size 16 contact holes.

Suggest Ø3.56±0.08 [0.140±0.003] holes for connector mounting holes.

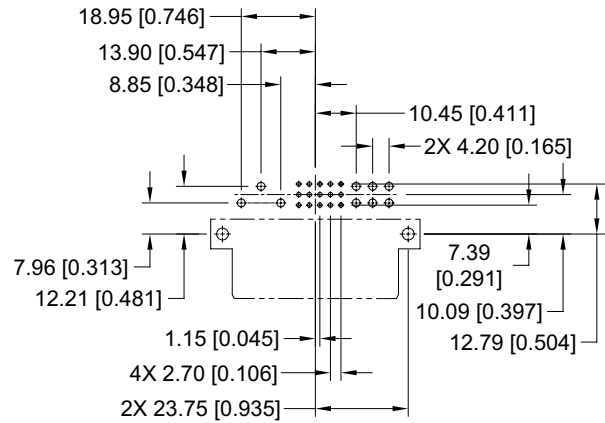


**FEMALE RIGHT ANGLE (90°) BOARD MOUNT CONNECTOR  
CODE 4**

**STANDARD PART NUMBER  
PCIB24W9F400A1**



**CONNECTOR DIMENSIONS**

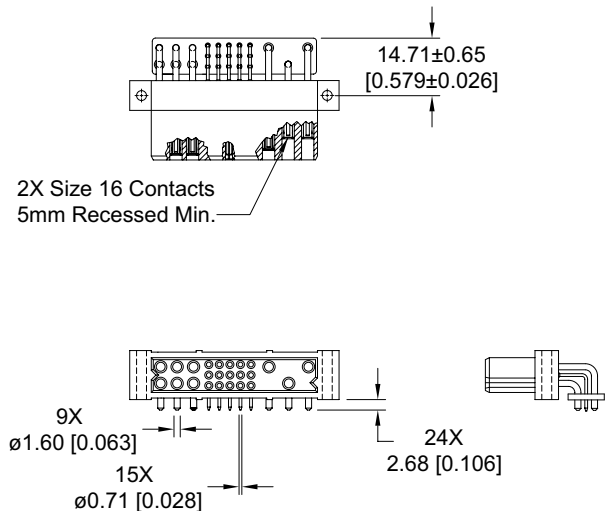


**CONTACT HOLE PATTERN**

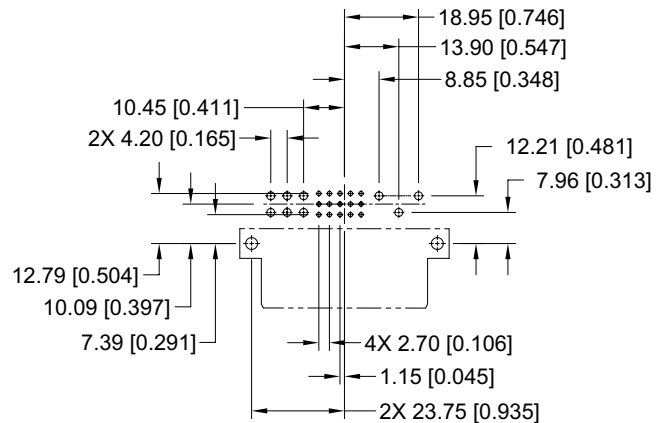
**Note:** See below for suggested printed board hole sizes.

**FEMALE RIGHT ANGLE (90°) BOARD MOUNT CONNECTOR  
CODE 4**

**PART NUMBER FOR INVERTED TERMINATION  
PCIB24W9RF400A1**



**CONNECTOR DIMENSIONS**



**CONTACT HOLE PATTERN**

**SUGGESTED PRINTED BOARD HOLE SIZES:**

Suggest Ø1.14 [0.045] holes for size 22 contact holes.  
Suggest Ø2.03 [0.080] holes for size 16 contact holes.  
Suggest Ø3.56±0.08 [0.140±0.003] holes for connector mounting holes.

**DIMENSIONS ARE IN MILLIMETERS (INCHES).  
ALL DIMENSIONS ARE SUBJECT TO CHANGE.**





Positronic Industries  
connectpositronic.com

# RIGHT ANGLE (90°) BOARD MOUNT CONNECTOR, FEMALE

Compact  
Power  
Connectors

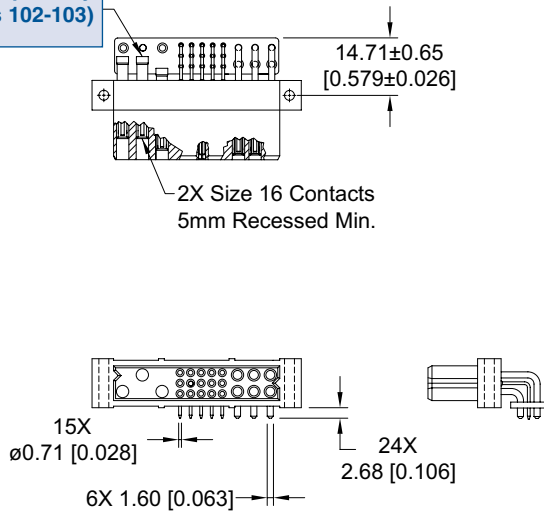
## FEMALE RIGHT ANGLE (90°) BOARD MOUNT CONNECTOR WITH A.C. PASS-THROUGH CODE 4 WITH MOS\* -422.0

CRIMP CONTACTS ARE NOT SUPPLIED WITH CONNECTOR AND MUST BE ORDERED SEPARATELY

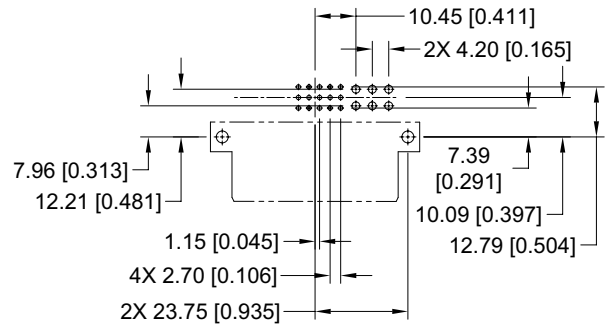
LOW PROFILE PART NUMBER  
PCIB24W9F400A1-422.0

\* For MOS descriptions,  
see chart on pages 111-112.

Crimp contacts  
ordered separately  
(see pages 102-103)



CONNECTOR DIMENSIONS



CONTACT HOLE PATTERN

Note: See below for suggested printed board hole sizes.

### SUGGESTED PRINTED BOARD HOLE SIZES:

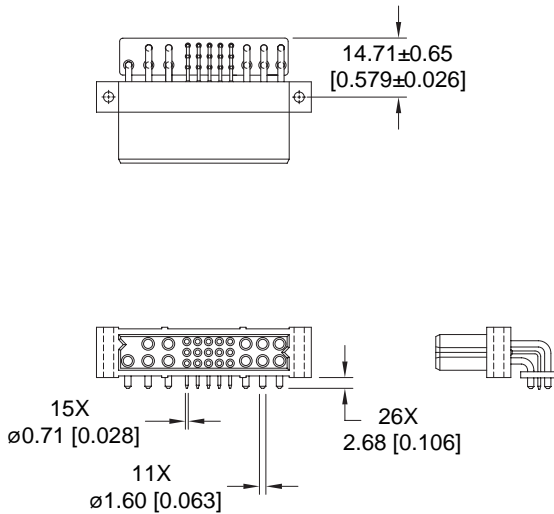
Suggest Ø1.14 [0.045] holes for size 22 contact holes.

Suggest Ø2.03 [0.080] holes for size 16 contact holes.

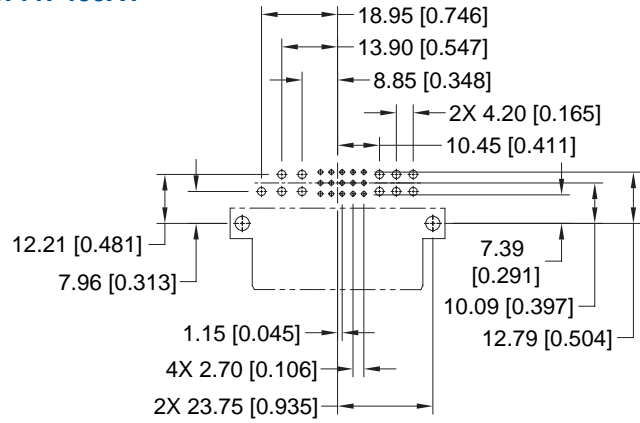
Suggest Ø3.56±0.08 [0.140±0.003] holes for connector mounting holes.

**FEMALE RIGHT ANGLE (90°) BOARD MOUNT CONNECTOR  
CODE 4**

**STANDARD PART NUMBER  
PCIB26W11F400A1**



**CONNECTOR DIMENSIONS**

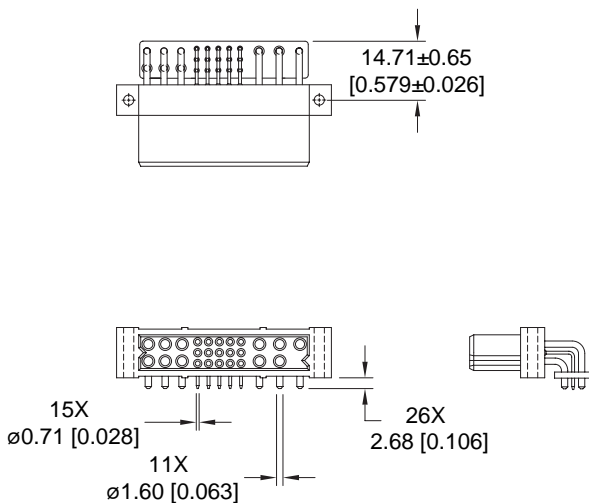


**CONTACT HOLE PATTERN**

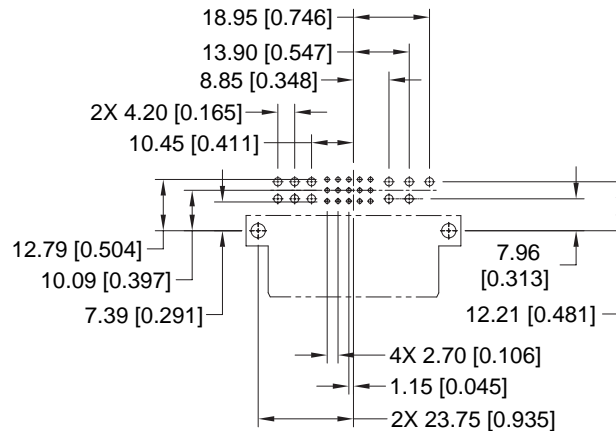
**Note:** See below for suggested printed board hole sizes.

**FEMALE RIGHT ANGLE (90°) BOARD MOUNT CONNECTOR  
CODE 4**

**PART NUMBER FOR INVERTED TERMINATION  
PCIB26W11RF400A1**



**CONNECTOR DIMENSIONS**



**CONTACT HOLE PATTERN**

**SUGGESTED PRINTED BOARD HOLE SIZES:**

- Suggest Ø1.14 [0.045] holes for size 22 contact holes.
- Suggest Ø2.03 [0.080] holes for size 16 contact holes.
- Suggest Ø3.56±0.08 [0.140±0.003] holes for connector mounting holes.

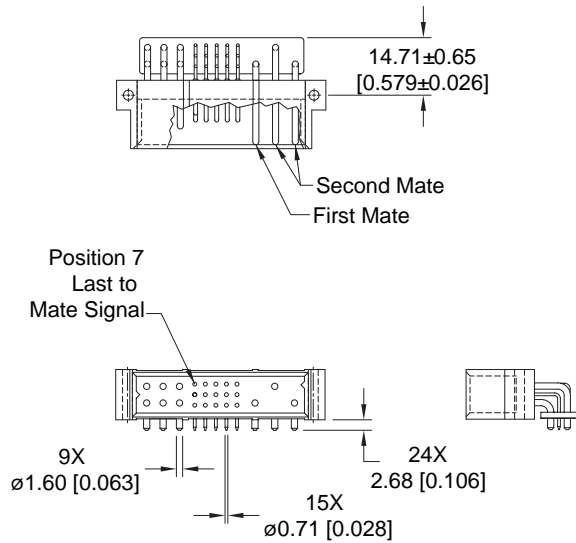
**DIMENSIONS ARE IN MILLIMETERS (INCHES).  
ALL DIMENSIONS ARE SUBJECT TO CHANGE.**



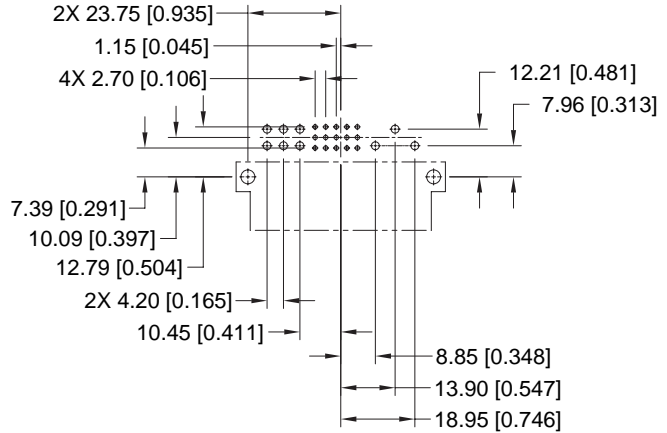
# RIGHT ANGLE (90°) BOARD MOUNT CONNECTOR, MALE

## MALE RIGHT ANGLE (90°) BOARD MOUNT CONNECTOR CODE 4

STANDARD PART NUMBER  
**PCIB24W9M400A1**



CONNECTOR DIMENSIONS

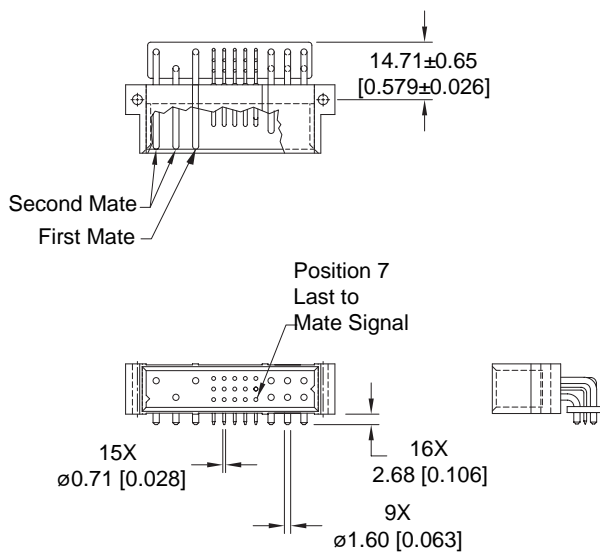


CONTACT HOLE PATTERN

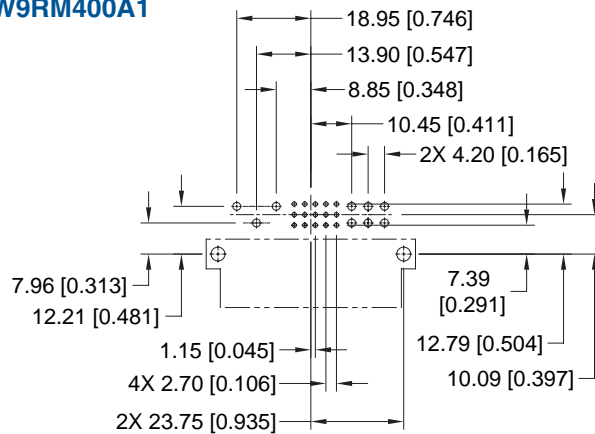
Note: See below for suggested printed board hole sizes.

## MALE RIGHT ANGLE (90°) BOARD MOUNT CONNECTOR CODE 4

PART NUMBER FOR INVERTED TERMINATION  
**PCIB24W9RM400A1**



CONNECTOR DIMENSIONS



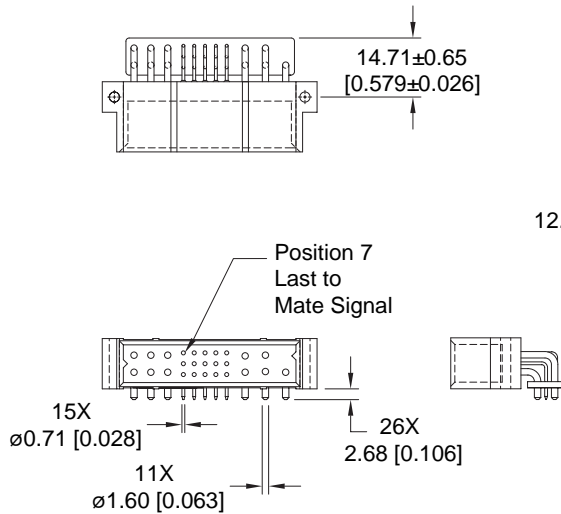
CONTACT HOLE PATTERN

### SUGGESTED PRINTED BOARD HOLE SIZES:

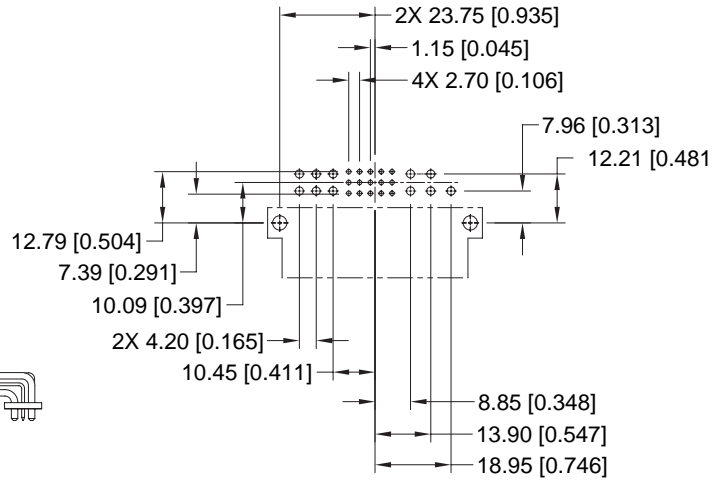
Suggest  $\phi 1.14$  [0.045] holes for size 22 contact holes.  
Suggest  $\phi 2.03$  [0.080] holes for size 16 contact holes.  
Suggest  $\phi 3.56 \pm 0.08$  [0.140 ± 0.003] holes for connector mounting holes.

**MALE RIGHT ANGLE (90°) BOARD MOUNT CONNECTOR  
CODE 4**

**STANDARD PART NUMBER  
PCIB26W11M400A1**



**CONNECTOR DIMENSIONS**

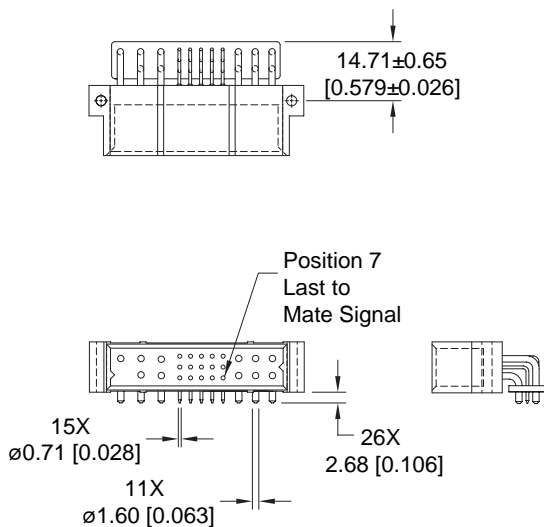


**CONTACT HOLE PATTERN**

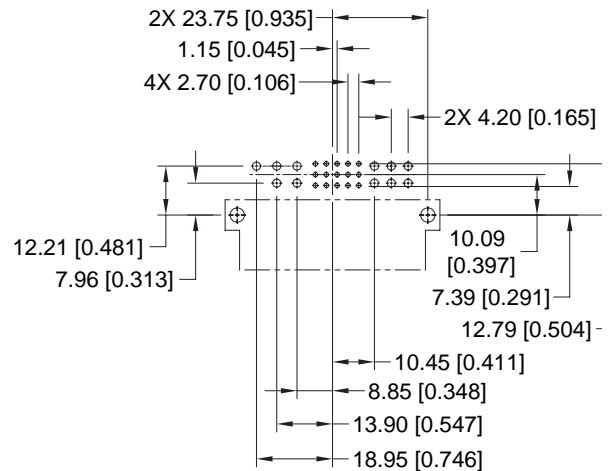
**Note:** See below for suggested printed board hole sizes.

**MALE RIGHT ANGLE (90°) BOARD MOUNT CONNECTOR  
CODE 4**

**PART NUMBER FOR INVERTED TERMINATION  
PCIB26W11RM400A1**



**CONNECTOR DIMENSIONS**



**CONTACT HOLE PATTERN**

**SUGGESTED PRINTED BOARD HOLE SIZES:**

Suggest  $\text{Ø}1.14$  [0.045] holes for size 22 contact holes.  
Suggest  $\text{Ø}2.03$  [0.080] holes for size 16 contact holes.  
Suggest  $\text{Ø}3.56\pm0.08$  [0.140±0.003] holes for connector mounting holes.

**DIMENSIONS ARE IN MILLIMETERS (INCHES).  
ALL DIMENSIONS ARE SUBJECT TO CHANGE.**

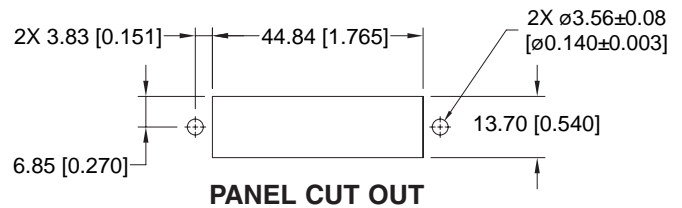
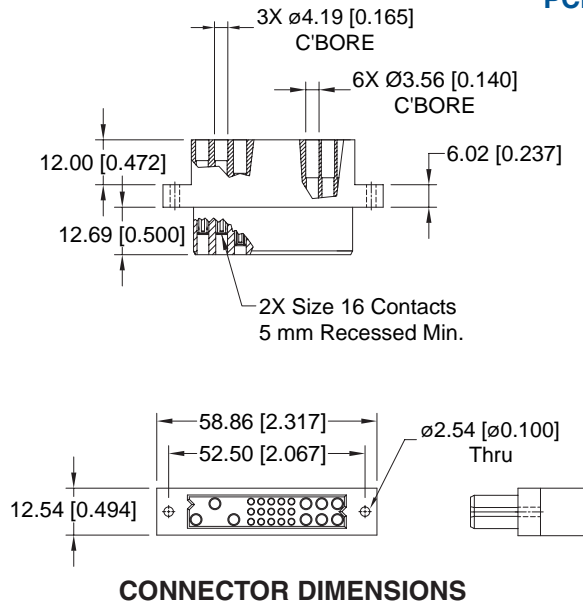


# PANEL MOUNT CONNECTOR, FEMALE

## FEMALE PANEL MOUNT CRIMP CONTACT CONNECTOR CODE 8

CONTACTS ARE NOT SUPPLIED WITH CONNECTOR AND MUST BE ORDERED SEPARATELY

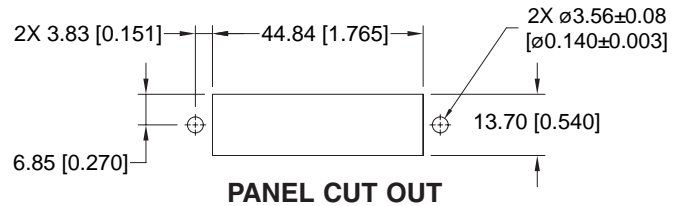
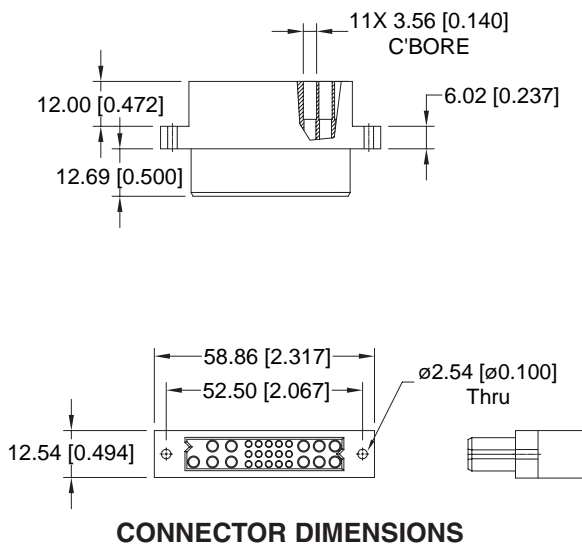
STANDARD PART NUMBER  
**PCIB24W9F8000**



## FEMALE PANEL MOUNT CRIMP CONTACT CONNECTOR CODE 8

CONTACTS ARE NOT SUPPLIED WITH CONNECTOR AND MUST BE ORDERED SEPARATELY

STANDARD PART NUMBER  
**PCIB26W11F8000**



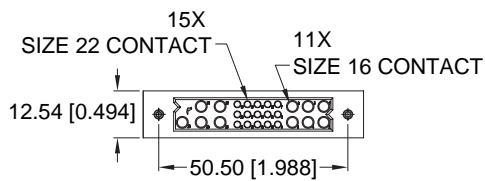
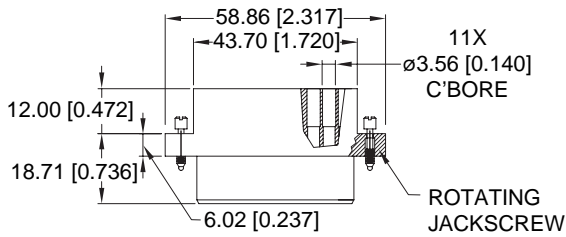
*For information regarding removable contacts, see Removable Contact section, pages 102-103.*

**FEMALE PANEL MOUNT CRIMP CONTACT CONNECTOR WITH JACKSCREW SYSTEM  
CODE 8 WITH MOS\* -443.0**

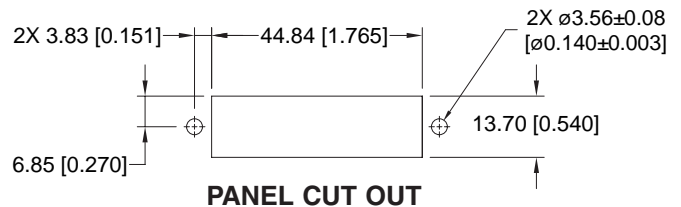
CONTACTS ARE NOT SUPPLIED WITH CONNECTOR AND MUST BE ORDERED SEPARATELY

**STANDARD PART NUMBER  
PCIB26W11F8000-443.0**

*\* For MOS descriptions,  
see chart on pages 111-112.*



**CONNECTOR DIMENSIONS**



**PANEL CUT OUT**

*For information regarding removable contacts, see Removable Contact section, pages 102-103.*



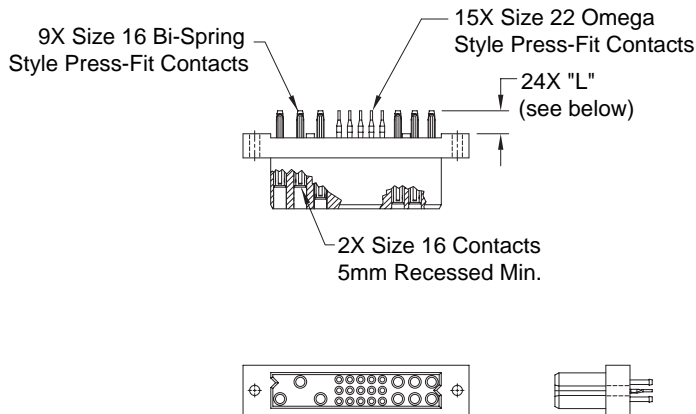
# COMPLIANT PRESS-FIT BOARD MOUNT CONNECTOR, FEMALE

## FEMALE COMPLIANT PRESS-FIT CONNECTORS CODE 93 or 94

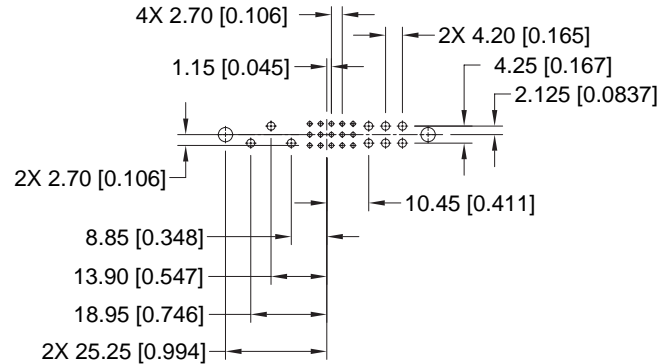
### STANDARD PART NUMBER

PCIB24W9F9300A1

PCIB24W9F9400A1



CONNECTOR DIMENSIONS



CONTACT HOLE PATTERN

CONTACT TAIL LENGTH		
Code	"L" Length	Board Thickness
93	5.72 [0.225]	2.29 to 4.45 [0.090 to 0.175]
94	7.04 [0.277]	4.45 min. [0.175 min.]

**Note:** See below for suggested printed board hole sizes, press-fit connector installation tools, and mounting screw options.

## FEMALE COMPLIANT PRESS-FIT CONNECTORS WITH A.C. PASS-THROUGH

### CODE 93 OR 94 WITH MOS\* -246.5

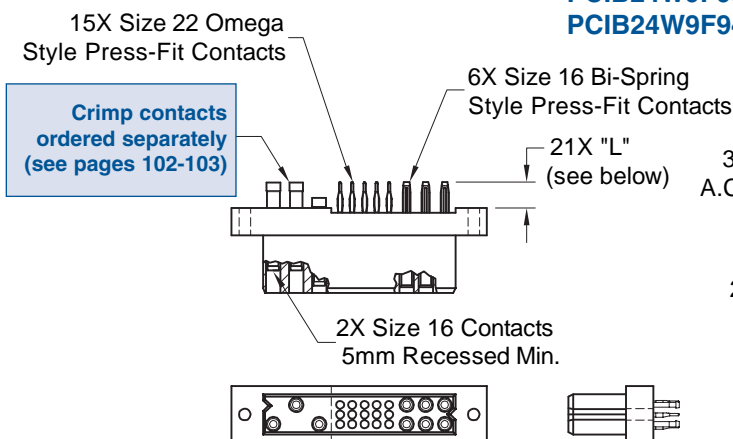
CRIMP CONTACTS ARE NOT SUPPLIED WITH CONNECTOR AND MUST BE ORDERED SEPARATELY

### LOW PROFILE PART NUMBER

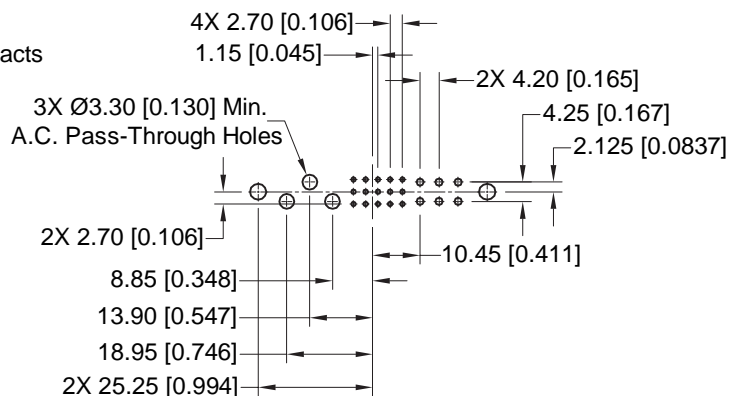
PCIB24W9F9300A1-246.5

PCIB24W9F9400A1-246.5

\* For MOS descriptions, see chart on pages 111-112.



CONNECTOR DIMENSIONS



CONTACT HOLE PATTERN

CONTACT TAIL LENGTH		
Code	"L" Length	Board Thickness
93	5.72 [0.225]	2.29 to 4.45 [0.090 to 0.175]
94	7.04 [0.277]	4.45 min. [0.175 min.]

### SUGGESTED PRINTED BOARD HOLE SIZES:

Suggest  $\text{Ø}3.56 \pm 0.08$  [0.140 ± 0.003] holes for connector mounting holes.

**NOTE:** See page 110 for suggested printed board drill hole sizes, recommended plating and finished hole sizes for compliant contact termination positions.

For press-fit connector installation tools, see pages 108-109.

For mounting screw options, see page 108.

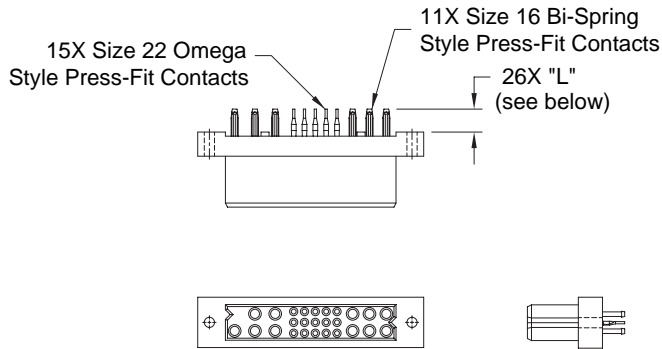


## FEMALE COMPLIANT PRESS-FIT CONNECTOR CODE 93 or 94

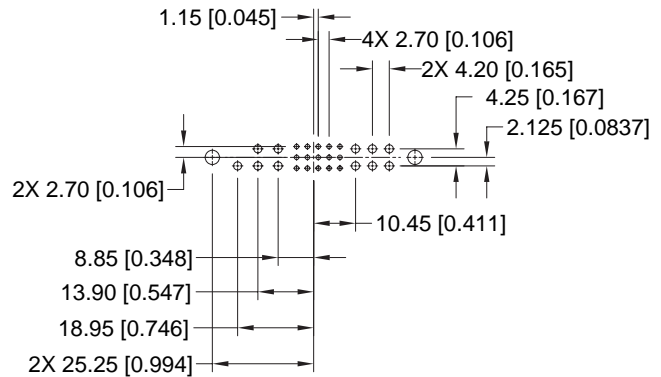
### STANDARD PART NUMBER

PCIB26W11F9300A1

PCIB26W11F9400A1



CONNECTOR DIMENSIONS



CONTACT HOLE PATTERN

CONTACT TAIL LENGTH		
Code	"L" Length	Board Thickness
93	5.72 [0.225]	2.29 to 4.45 [0.090 to 0.175]
94	7.04 [0.277]	4.45 min. [0.175 min.]

**Note:** See below for suggested printed board hole sizes, press-fit connector installation tools, and mounting screw options.

## FEMALE COMPLIANT PRESS-FIT CONNECTOR WITH A.C. PASS-THROUGH CODE 93 or 94 WITH MOS\* -246.6

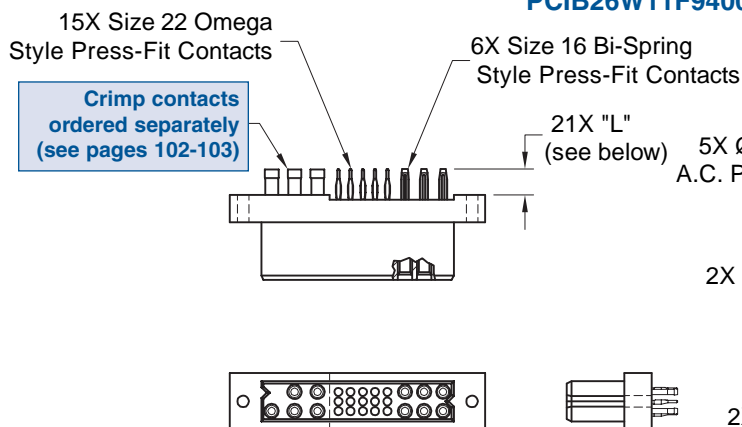
CRIMP CONTACTS ARE NOT SUPPLIED WITH CONNECTOR AND MUST BE ORDERED SEPARATELY

### LOW PROFILE PART NUMBER

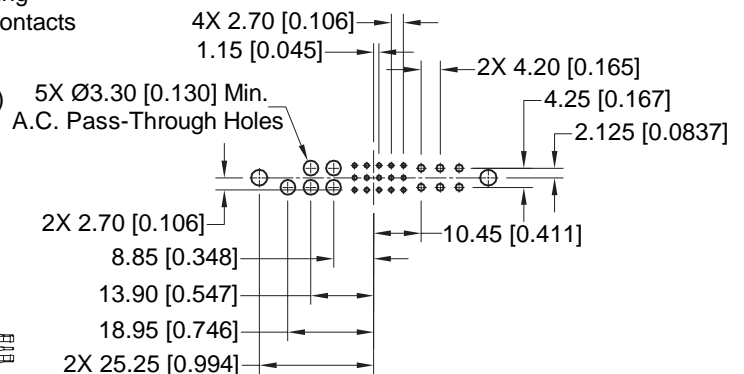
PCIB26W11F9300A1-246.6

PCIB26W11F9400A1-246.6

\* For MOS descriptions, see chart on pages 111-112.



CONNECTOR DIMENSIONS



CONTACT HOLE PATTERN

### SUGGESTED PRINTED BOARD HOLE SIZES:

Suggest  $\text{Ø}3.56 \pm 0.08$  [0.140 ± 0.003] holes for connector mounting holes.

**NOTE:** See page 110 for suggested printed board drill hole sizes, recommended plating and finished hole sizes for compliant contact termination positions.

For press-fit connector installation tools, see pages 108-109.

For mounting screw options, see page 108.

CONTACT TAIL LENGTH		
Code	"L" Length	Board Thickness
93	5.72 [0.225]	2.29 to 4.45 [0.090 to 0.175]
94	7.04 [0.277]	4.45 min. [0.175 min.]

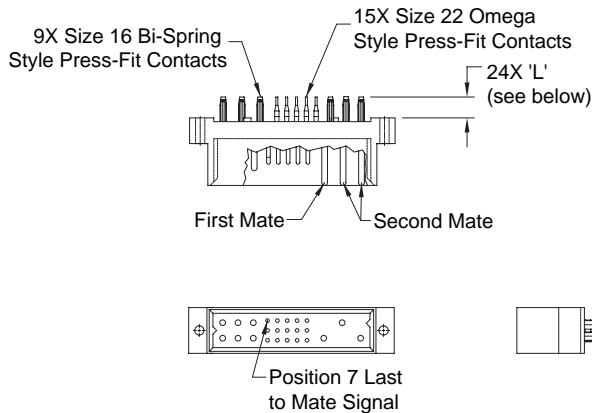
DIMENSIONS ARE IN MILLIMETERS (INCHES).  
ALL DIMENSIONS ARE SUBJECT TO CHANGE.



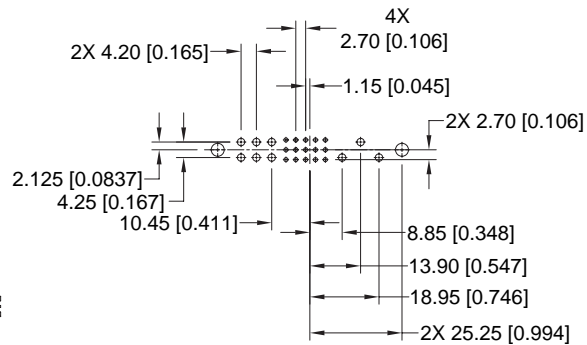
# COMPLIANT PRESS-FIT BOARD MOUNT CONNECTOR, MALE

## MALE COMPLIANT PRESS-FIT CONNECTOR CODE 93 or 94

STANDARD PART NUMBER  
**PCIB24W9M9300A1**  
**PCIB24W9M9400A1**



CONNECTOR DIMENSIONS



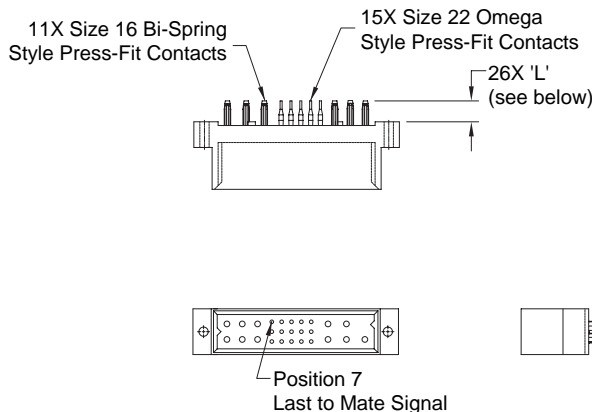
CONTACT HOLE PATTERN

**Note:** See below for suggested printed board hole sizes, press-fit connector installation tools, and mounting screw options.

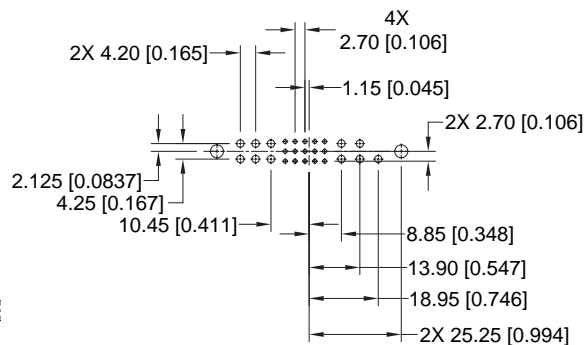
CONTACT TAIL LENGTH		
Code	"L" Length	Board Thickness
93	5.72 [0.225]	2.29 to 4.45 [0.090 to 0.175]
94	7.04 [0.277]	4.45 min. [0.175 min.]

## MALE COMPLIANT PRESS-FIT CONNECTOR CODE 93 or 94

STANDARD PART NUMBER  
**PCIB26W11M9300A1**  
**PCIB26W11M9400A1**



CONNECTOR DIMENSIONS



CONTACT HOLE PATTERN

CONTACT TAIL LENGTH		
Code	"L" Length	Board Thickness
93	5.72 [0.225]	2.29 to 4.45 [0.090 to 0.175]
94	7.04 [0.277]	4.45 min. [0.175 min.]

### SUGGESTED PRINTED BOARD HOLE SIZES:

Suggest  $\varnothing 3.56 \pm 0.08$  [0.140  $\pm$  0.003] holes for connector mounting holes.

**NOTE:** See page 110 for suggested printed board drill hole sizes, recommended plating and finished hole sizes for compliant contact termination positions.

For press-fit connector installation tools, see pages 108-109.

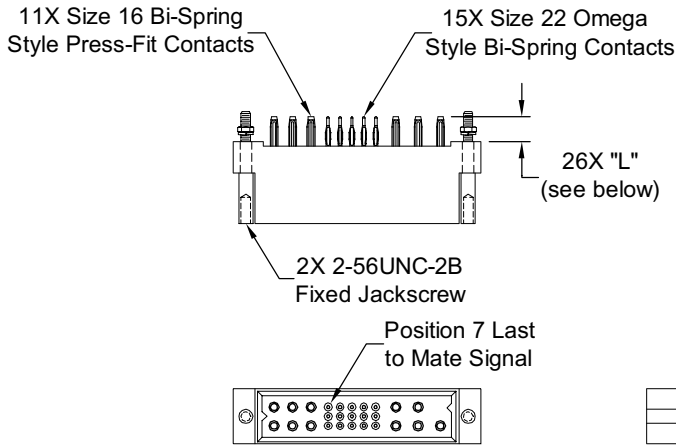
For mounting screw options, see page 108.

**MALE COMPLIANT PRESS-FIT CONNECTOR WITH JACKSCREW SYSTEM**  
**CODE 93 OR 94 WITH MOS\* -444.0**

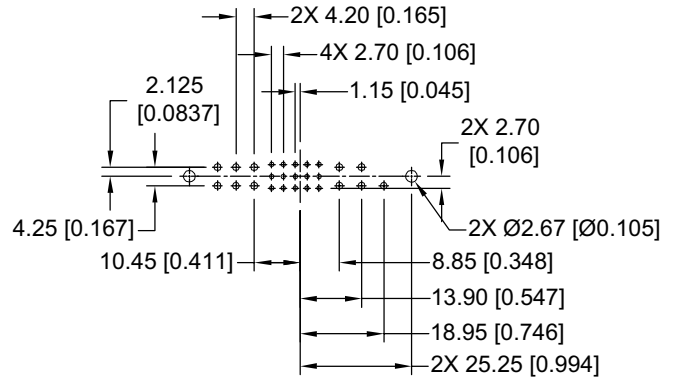
OTHER JACKSCREW LENGTH OPTIONS AVAILABLE, CONTACT TECHNICAL SALES FOR DETAILS

**STANDARD PART NUMBER**  
**PCIB26W11M9300A1-444.0**  
**PCIB26W11M9400A1-444.0**

*\* For MOS descriptions,  
see chart on pages 111-112.*



**CONNECTOR DIMENSIONS**



**CONTACT HOLE PATTERN**

**SUGGESTED PRINTED BOARD HOLE SIZES:**

Suggest  $\text{Ø}3.56 \pm 0.08$  [0.140 ± 0.003] holes for connector mounting holes.

**NOTE:** See page 110 for suggested printed board drill hole sizes, recommended plating and finished hole sizes for compliant contact termination positions.

For press-fit connector installation tools, see pages 108-109.

For mounting screw options, see page 108.

CONTACT TAIL LENGTH		
Code	"L" Length	Board Thickness
93	5.72 [0.225]	2.29 to 4.45 [0.090 to 0.175]
94	7.04 [0.277]	4.45 min. [0.175 min.]



## ORDERING INFORMATION - CODE NUMBERING SYSTEM

Specify Complete Connector By Selecting An Option From Step 1 Through 7

STEP	1	2	3	4	5	6	7	8	9
EXAMPLE	PCIB	26W11	F	93	0	0	A1	/AA	

### STEP 1 - BASIC SERIES

PCIB - PCIB Series

### STEP 2 - CONNECTOR VARIANTS

- 24W9 - 9 size 16 contacts and 15 size 22 contacts
- 24W9R - 9 size 16 contacts and 15 size 22 contacts. Inverted termination style, use with contact type "4"
- 26W11 - 11 size 16 contacts and 15 size 22 contacts
- 26W11R - 11 size 16 contacts and 15 size 22 contacts. Inverted termination style, use with contact type "4"

### STEP 3 - CONNECTOR GENDER

- F - Female
- M - Male

### STEP 4 - CONTACT TERMINATION TYPE

- 3 - Solder, Straight Printed Board Mount with 4.50 [0.177] tail extension for connection system 1.
- 4 - Solder, Right Angle (90°) Printed Board Mount with 2.68 [0.106] tail extension for connection systems 1 and 4.
- 8 - Contacts must be ordered separately for Panel Mount Cable Connectors, connection system 3, see pages 102-103. Female connector only.
- 93 - Press-Fit, Compliant Termination size 16 and size 22 Straight Printed Board Mount for use with board thicknesses of 2.29 to 4.45 [0.090 to 0.175]. Connection system 1.
- 94 - Press-Fit, Compliant Termination size 16 and size 22 Straight Printed Board Mount for use with board thickness of 4.45 minimum [0.175 minimum]. Connection system 1.

### STEP 5 - MOUNTING STYLE

- 0 - Standard Option
- See page 108 for mounting screw options.

### STEP 6 - HOODS

- 0 - Not applicable

### STEP 9 - SPECIAL OPTIONS

FOR LISTING OF SPECIAL OPTIONS,  
SEE SPECIAL OPTIONS APPENDIX  
ON PAGES 111 AND 112.

### STEP 8 - ENVIRONMENTAL COMPLIANCE OPTIONS

- /AA - Compliant per EU Directive 2002/95/EC (RoHS)

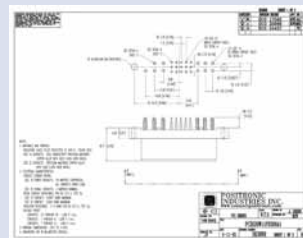
**NOTE:** If compliance to environmental legislation is not required, this step will not be used.  
Example: PCIB26W11F9300A1



### STEP 7 - CONTACT PLATING FOR PRINTED BOARD TYPE CONNECTORS

- 0 - Crimp contacts ordered separately
- A1 - Gold flash over nickel on mating end and termination end.
- A2 - Gold flash over nickel on mating end and 5.00 microns [0.00020 inch] tin-lead solder coat on termination end. Not available with code 93 or code 94 in step 4.
- C1 - 0.76 microns [0.000030 inch] gold over nickel on mating end and termination end.
- C2 - 0.76 microns [0.000030 inch] gold over nickel on mating end and 5.00 microns [0.00020 inch] tin-lead solder coat on termination end. Not available with code 93 or code 94 in step 4.
- D1 - 1.27 microns [0.000050 inch] gold over nickel on mating end and termination end.
- D2 - 1.27 microns [0.000050 inch] gold over nickel on mating end and 5.00 microns [0.00020 inch] tin-lead solder coat on termination end. Not available with code 93 or code 94 in step 4.

**NOTE:** Once you have made a connector selection, contact Technical Sales if you would like to receive a drawing in DXF, PDF format or a 3-dimensional IGES file.



SK Drawing



3-dimensional model