

Tous droits strictement réservés. Reproduction ou communication à des fins interdites sans gracieuse forme que ce soit sans autorisation écrite du propriétaire. Propriété de A FCI. Droits de reproduction FCI.

**A**  
FCI

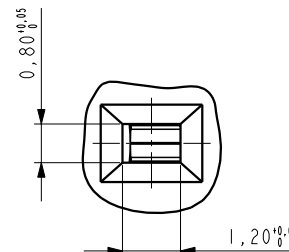
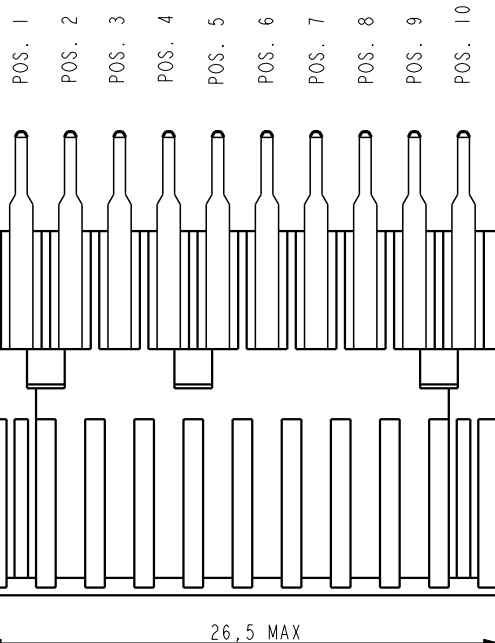
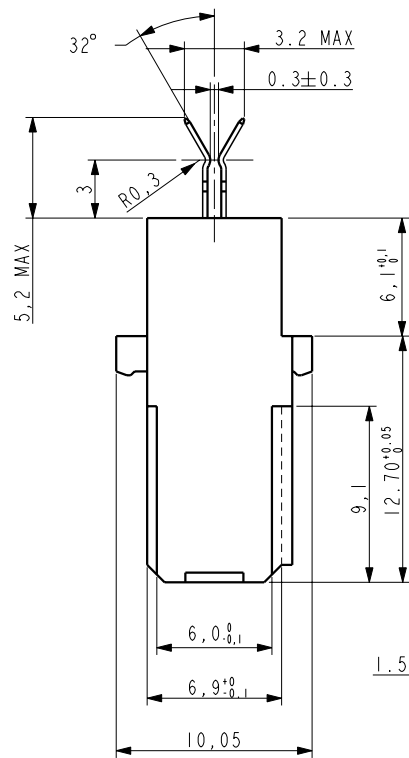
All rights strictly reserved. Reproduction or communication in any form whatsoever is not permitted without written authority from the proprietor. Property of FCI. Copyright FCI.

TIN LEAD P/N	BPS7B20SPOW6
LEAD FREE P/N	BPS7B20SPOW6LF

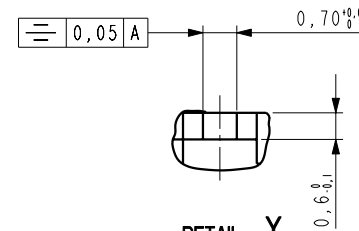
POS. PROVIDED WITH CONTACTS	
ROW A	1-2-3-4-5-6-7-8-9-10
ROW B	

NOTE: RoHS INFORMATIONS:

- The "LF" product meet European union Directives and other country regulations as described in GS-22-008.
- termination plating spec: 1.27 µm Nickel mini, 2.5 to 7.5 µm Sn ( Pure Matte )
- Packaging spec : see GS-14-920



DETAIL X  
SCALE 10/1



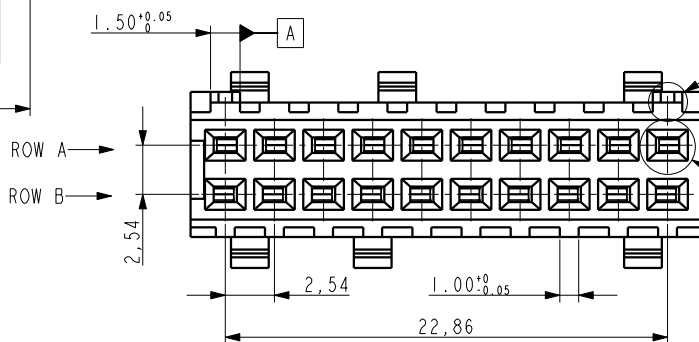
DETAIL Y  
SCALE 10/1

PERFORMANCE CHARACTERISTICS:

- \* OPERATING T° -40°C TO +125°C.
- \* CONTACT RESISTANCE 20 mΩ MAX. AFTER TEST.
- \* CURRENT RATING 1.3 A AT 70°C.
- \* OPERATING VOLTAGE 250 VAC.
- \* WITHSTANDING VOLTAGE 1000 V.
- \* INSULATION RESISTANCE 10<sup>4</sup> MΩ MIN AFTER TEST.

MATERIALS:

- \* BODY HOUSING GLASS-FILLED THERMOPLASTIC.
- \* CONTACTS PHOSPHOR BRONZE.
- \* PLATING CONTACT AREA PER ALCATEL SPEC. IAB 00049 DSZZA
- \* SOLDER TAILS 5 µ SnPb Min for TIN LEAD VERSION.
- \* SOLDER TAILS 5 µ Sn Min for LEAD FREE VERSION.



<b>A</b> FCI		www.fciconnect.com		surface - ✓	tolerance ISO 406 ISO 1101	projection ⊕	mm ↔
Dr	G CORBOZ	00.12.05	Product family	BPS7		size	Scale
Eng	JF NOTTEAU	00.12.05	Spec ref	-		A3	4/1
Chr	-	-	Material	SEE NOTES		ECN	LS05-0029
Appr	JF-N	00.12.05					
title			ASSY BPS7		dwg no		Rev.
			CABLE CONN FOR SUBSTR APPL		54729C		C
catalog no			SEE TABLE		CUSTOMER COPY		sheet 1 of 1

lfr	ecn no	dr	date
A	F00823	GCO	00.12.05
B	LS05-0029	HLE	05-02-23
C	LS05-0029	HLE	05-03-17
-	-	-	-
-	-	-	-
-	-	-	-
-	-	-	-