

TABLE OF DIMENSIONS								
BURNDY CATALOG NO.	CONTACTS PER ROW	TOTAL NO CONTACTS	NO. OF CONTACT PAIRS		D	E	H ±.008 [0.20]	L
			BAY A	BAY B				
CEE2X60S-V-Z48W	60	120	11	49	.590 [14.99]	2.490 [63.25]	3.340 [84.84]	2.550 [64.77]

TABLE I - TERMINATION LENGTHS		
NO.	S ±.010 [0.25] (SOLDER TAIL LENGTH)	J ±.010 [0.25] (MOUNTING POSTS LENGTH)
3	.100 [2.54]	.180 [4.57]
5	.125 [3.18]	.205 [5.21]
9	.140 [3.56]	.220 [5.59]

NOTES UNLESS OTHERWISE SPECIFIED.

- INTERPRET THIS DRAWING IN ACCORDANCE WITH ANSI Y14.5M-1982.
- SEE SHEETS 5 AND 6 FOR RECOMMENDED MATING DAUGHTERBOARD CARD EDGE LAYOUTS AND MOTHERBOARD FOOTPRINTS.

MATING DAUGHTERBOARD MATERIAL:
P.C. BOARD: FR-4 WITH 1 OZ [28.35 GRAMS] MIN COPPER PADS
PAD PLATING: 30 MICRONS [0.76 MICRONS] MIN GOLD PER MIL-9-45204, TYPE 1 CLASS 1, GRADE C OVER 100 MICRONS [2.54 MICRONS] MIN NICKEL PER QQ-N-290.

NOT INCLUDED AS PART OF THE PCI-SIG SPECIFICATION.
MOUNTING HOLE DIMENSION, $\phi 0.96_{-0.01}^{+0.02}$ [2.44 -0.03], CAN BE $\phi 0.96_{+0.003}^{+0.005}$ [2.44 +0.08] FOR "SC" RETENTION CLIP VERSIONS.

MATERIALS:

BODY - HIGH TEMPERATURE THERMOPLASTIC, RATED UL94V-0 AVAILABLE IN WHITE OR BROWN, REFER TO CATALOG NO. DESCRIPTION FOR FURTHER DETAILS.

CONTACTS - COPPER ALLOY

FINISH:

CONTACTS - Z48 PLATING GOLD FLASH OVER 25 MICRONS [0.63 MICRONS] MIN PALLADIUM-NICKEL OVER 50 MICRONS [1.27 MICRONS] MIN NICKEL UNDERPLATE IN CRITICAL CONTACT AREA AND 100 MICRONS [2.54 MICRONS] SOLDER OVER NICKEL UNDERPLATE ON SOLDER TAILS.

PERFORMANCE CHARACTERISTICS:

CONTACT RESISTANCE (LOW SIGNAL LEVEL) - MIL-STD-1344, METHOD 3002-1, 30 MILLIOHMS MAX INITIAL, 10 MILLIOHMS MAX INCREASE THROUGH TESTING.

CURRENT RATING - 1 AMPERE, 86°F [30°C] RISE ABOVE AMBIENT.

CONTACT NORMAL FORCE - 1.76 OZ FORCE [0.49 NEWTONS] MINIMUM END OF LIFE.

DURABILITY - 100 MATING CYCLES WITHOUT PHYSICAL DAMAGE, OR EXCEEDING LOW LEVEL CONTACT RESISTANCE REQUIREMENT WHEN MATED WITH RECOMMENDED CARD EDGE.

INSULATION RESISTANCE - MIL-STD-202, METHOD 302, CONDITION B, 1000 MEGAOHMS MINIMUM.

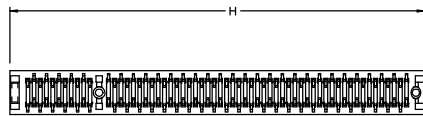
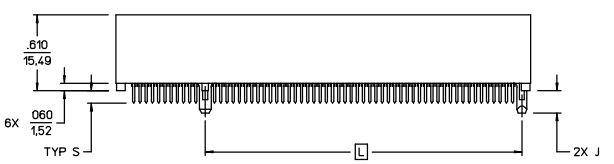
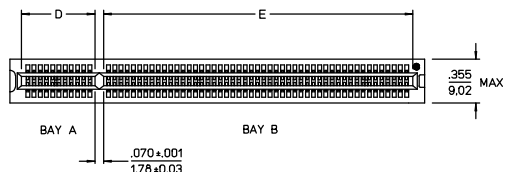
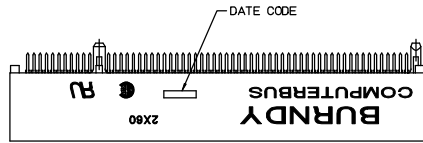
OPERATING TEMPERATURE -40°F TO 221°F [-40°C TO 105°C].

THERMAL SHOCK - MIL-STD-1344, METHOD 1003.1, -67°F TO 185°F [-55°C TO 85°C] 5 CYCLES.

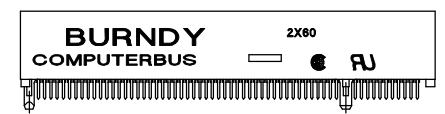
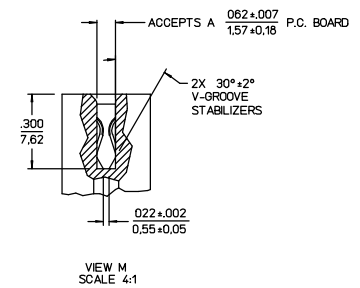
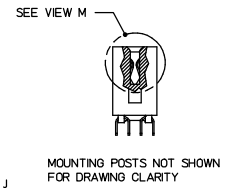
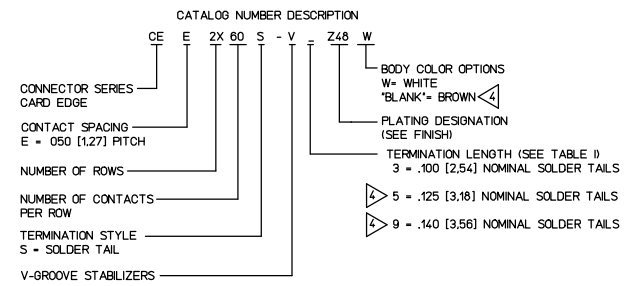
CAPACITANCE - 2 PICOFARADS MAXIMUM AT 1 MEGAHERTZ.

MATING FORCE - MIL-STD-1344, METHOD 2013.1, 6 OZ. [1.67 NEWTONS] MAX AVERAGE PER OPPOSING PAIR USING STEEL GAUGE PER MIL-STD-C-21097 EXCEPT .062 [1.57] THICK WITH 20° LEAD-IN CHAMFER ANGLE.

COMPATIBLE WITH WAVE SOLDERING AND VAPOR PHASE SOLDERING TECHNIQUES.



CEE2X60S-V3Z48W CONNECTOR SHOWN IN 33V/32-BIT APPLICATION POSITION



SAME CEE2X60S-V3Z48W CONNECTOR SHOWN IN 5V/32-BIT APPLICATION POSITION

1	SHTS 1-5: NO CHANGE SHT 6: CORRECTED VIEW FOR RECOMMENDED MOTHERBOARD FOOTPRINT FOR 5V/32-BIT CONNECTOR (ECN3042)	DDF	RCW	06-13-94
REV	REVISION DESCRIPTION	BY	CHKD	DATE

REFERENCE: SE95202
SUPERSEDES SKME28574-1

COMPUTERBUS™ CONNECTOR
CAT NO CEE2X_S-V-Z48W (SEE TABLE)

LINEAR MEASURE:	INCH	INCH (mm)
THIRD ANGLE PROJECTION		
- TOLERANCES -		
UNLESS OTHERWISE SPECIFIED		
NO. OF DECIMAL PLACES IN INCHES	INCH (mm)	
ONE PLACE	±.1 [±2.5]	
TWO PLACES	±.02 [±0.5]	
THREE PLACES	±.005 [±0.13]	
ANGLES ±°		

DWG RELEASED TO CENTRAL FILE 06-03-94
CAGE NO 09922 DON 901 PC 822
© BURNDY CORPORATION 1994

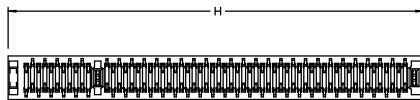
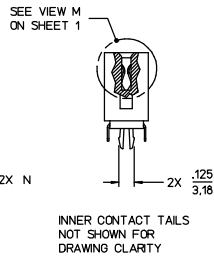
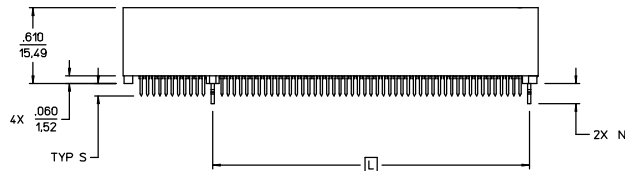
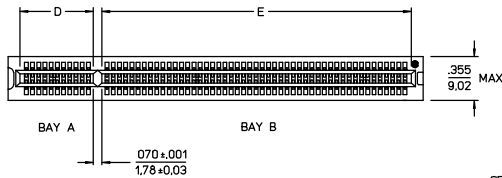
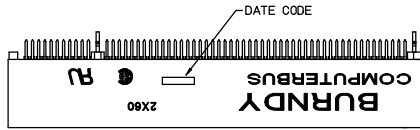
BURNDY
FCI
FRAMATOME CONNECTORS INTERNATIONAL

DRWN	DDF	05-28-94
CHKD	PJB	05-31-94
DSGN	JC	06-03-94
MKT	KM	06-03-94
OC	JB	05-31-94
DRAWING SCALE 2:1		
DRAWING NO		
BRSE96060		1
SHEET 1 OF 6		

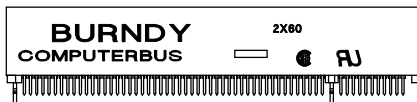
TABLE OF DIMENSIONS								
BURNDY CATALOG NO.	CONTACTS PER ROW	TOTAL NO CONTACTS	NO. OF CONTACT PAIRS		D	E	H ±.008 [0,20]	L
			BAY A	BAY B				
CEE2X60SC-V-Z48W	60	120	11	49	.590 [14,99]	2,490 [63,25]	3,340 [84,84]	2,550 [64,77]

TABLE II - TERMINATION LENGTHS			
NO.	S ±.010 [0,25] (SOLDER TAIL LENGTH)	N ±.010 [0,25] (RETENTION CLIP LENGTH)	APPLICABLE MOTHERBOARD THICKNESS ±.007 [0,18]
3	.100 [2,54]	.155 [3,94]	.062 [1,57]
9	.140 [3,56]	.186 [4,72]	.093 [2,36]

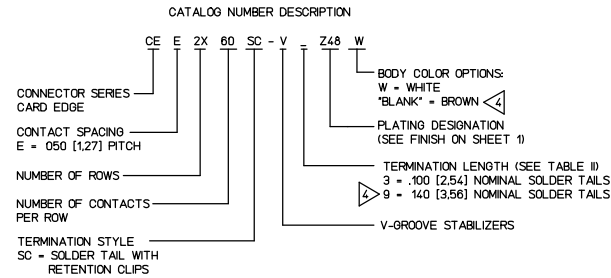
NOTES: SEE SHEET 1.



CEE2X60SC-V3Z48W CONNECTOR SHOWN IN 33V/32-BIT APPLICATION POSITION



SAME CEE2X60SC-V3Z48W CONNECTOR SHOWN IN 5V/32-BIT APPLICATION POSITION



REV	ALL REVISIONS RECORDED ON SHIT 1	BY	CHKD	DATE
-----	----------------------------------	----	------	------

COMPUTERBUS™ CONNECTOR

CAT NO CEE2X__S-V-Z48W (SEE TABLE)

DWG RELEASED TO CENTRAL FILE 06-03-94

CAGE NO 09922 | DON 901 | PC 822

© BURNDY CORPORATION 1994

BURNDY

FCI

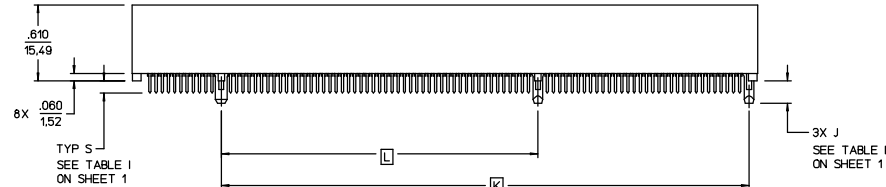
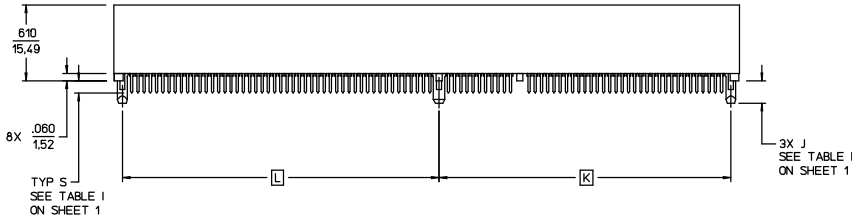
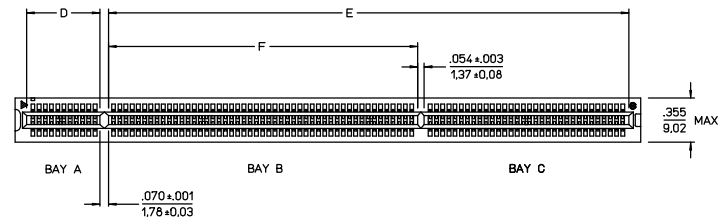
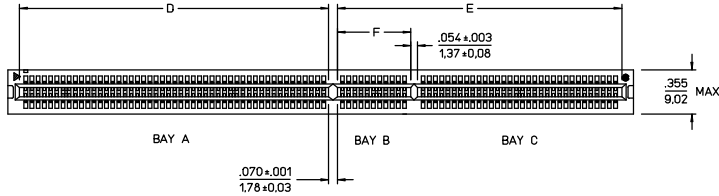
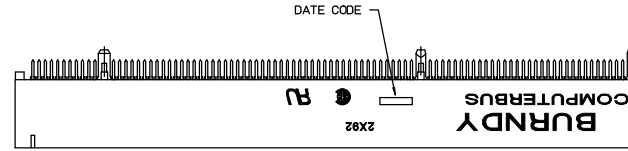
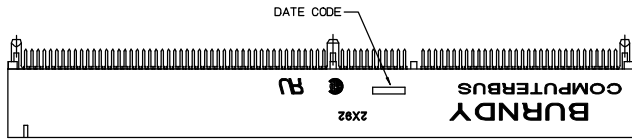
FRAMATOME CONNECTORS INTERNATIONAL

DRWN	DDF	05-28-94
CHKD	PJB	05-31-94
DSGN	JC	06-03-94
MKT	KM	06-03-94
QC	JB	05-31-94
DRAWING SCALE 2:1		
DRAWING NO		
BRSE96060	1	
SHEET 2 OF 6		

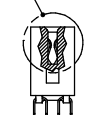
LINEAR MEASURE:	INCH	INCH (mm)
NO. OF DECIMAL PLACES IN INCHES	±.1	±2,5
ONE PLACE	±.1	±2,5
TWO PLACES	±.02	±0,5
THREE PLACES	±.005	±0,13
ANGLES ±°		

BURNDY CATALOG NO.	CONTACTS PER ROW	TOTAL NO CONTACTS	TABLE OF DIMENSIONS								
			NO. OF CONTACT PAIRS			D	E	F	H ±.008 [0,20]	K	L
			BAY A	BAY B	BAY C						
CEE2X92S-V_3Z48W	92	184	11	49	32	.590 [14,99]	4.190 [106,45]	2.488 [63,20]	5.040 [128,02]	4.250 [107,95]	2.550 [64,77]
CEE2X92S-V_5Z48W	92	184	49	11	32	2.490 [63,25]	2.290 [58,17]	.590 [14,99]	5.040 [128,02]	2.350 [59,69]	2.550 [64,77]

NOTES: SEE SHEET 1



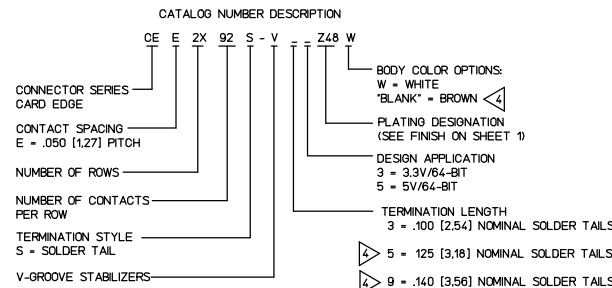
SEE VIEW M ON SHEET 1



MOUNTING POSTS NOT SHOWN FOR DRAWING CLARITY

CEE2X92S-V35Z48W CONNECTOR SHOWN FOR 5V/64-BIT APPLICATION

CEE2X92S-V33Z48W CONNECTOR SHOWN FOR 3.3V/64-BIT APPLICATION



REV	ALL REVISIONS RECORDED ON SHIT 1	BY	CHKD	DATE
-----	----------------------------------	----	------	------

COMPUTERBUS™ CONNECTOR

CAT NO CEE2X_S-V_Z48W (SEE TABLE)

DWG RELEASED TO CENTRAL FILE 06-03-94

CAGE NO 09922 DON 901 PC 822

© BURNDY CORPORATION 1994

BURNDY

FCI

FRAMATOME CONNECTORS INTERNATIONAL

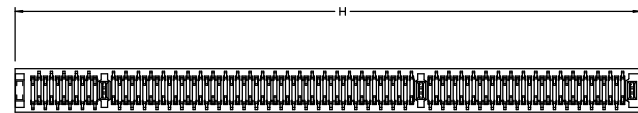
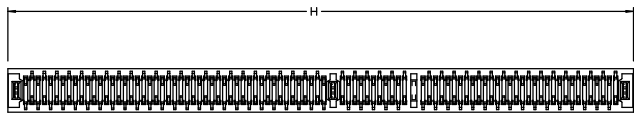
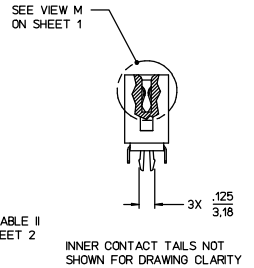
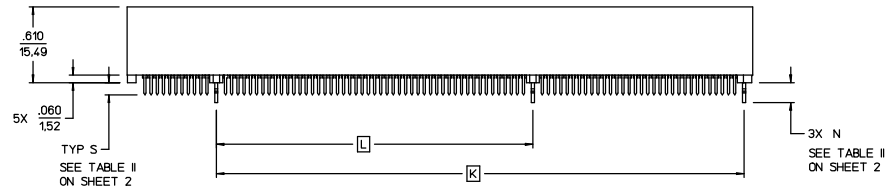
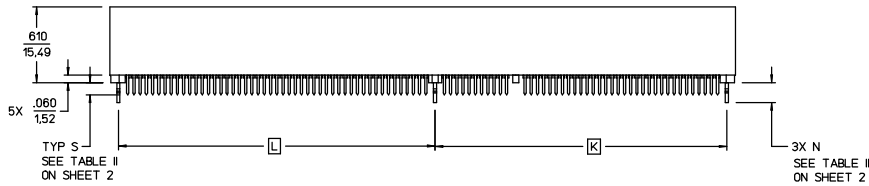
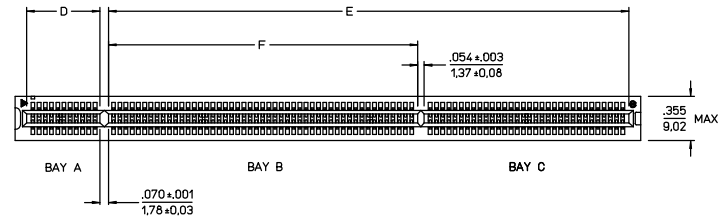
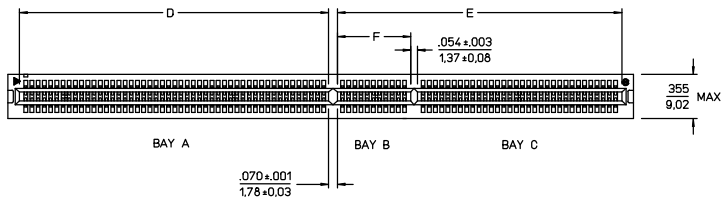
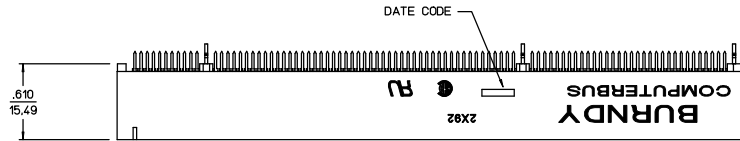
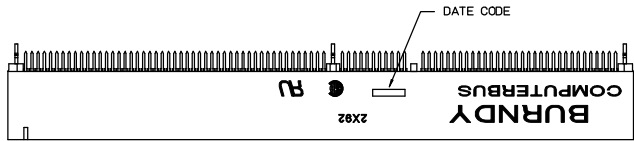
DRWN	DDF	05-28-94
CHKD	PJB	05-31-94
DSGN	JC	06-03-94
MKT	KM	06-03-94
QC	JB	05-31-94
DRAWING SCALE 2:1		
DRAWING NO		
BRSE96060	1	

SHEET 3 OF 6

LINEAR MEASURE:	INCH	INCH (mm)
THIRD ANGLE PROJECTION		
- TOLERANCES -		
UNLESS OTHERWISE SPECIFIED		
NO OF DECIMAL PLACES IN INCHES	INCH (mm)	
ONE PLACE	±.1 (±2.5)	
TWO PLACES	±.02 (±0.5)	
THREE PLACES	±.005 (±0.13)	
ANGLES ±°		

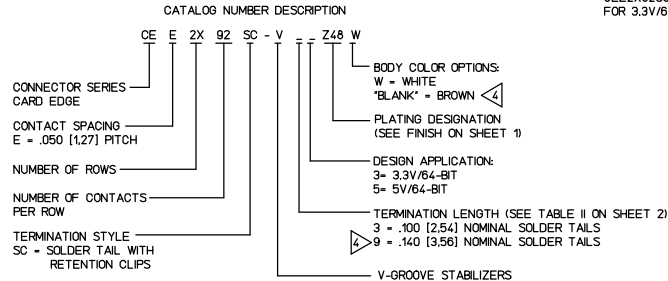
BURNDY CATALOG NO.	CONTACTS PER ROW	TOTAL NO CONTACTS	NO. OF CONTACT PAIRS			D	E	F	H ±.008 [0,20]	K	L
			BAY A	BAY B	BAY C						
			CEE2X92SC-V_3Z48W	92	184						
CEE2X92SC-V_5Z48W	92	184	49	11	32	2.490 [63,25]	2.290 [58,17]	.590 [14,99]	5.040 [128,02]	2.350 [59,69]	2.550 [64,77]

NOTES: SEE SHEET 1



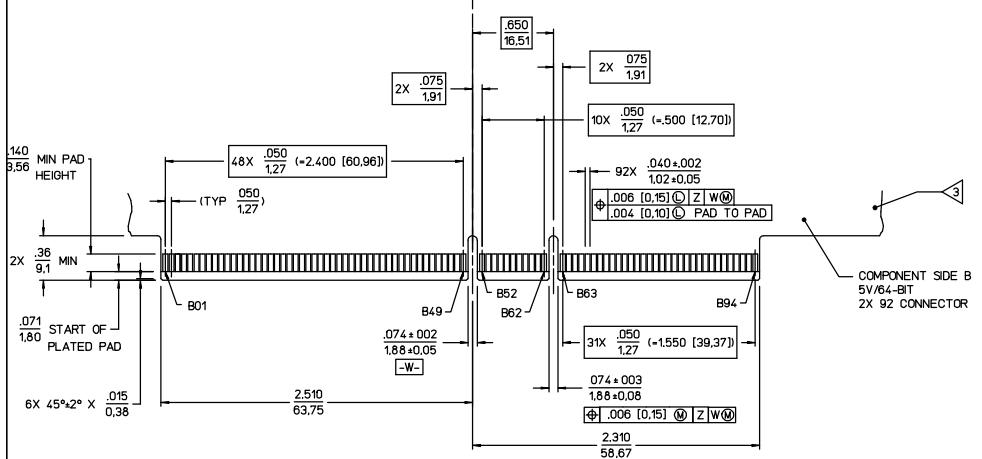
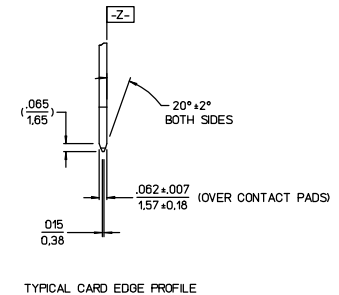
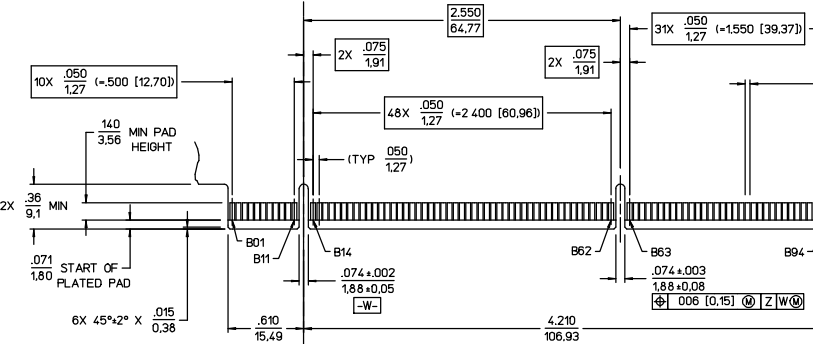
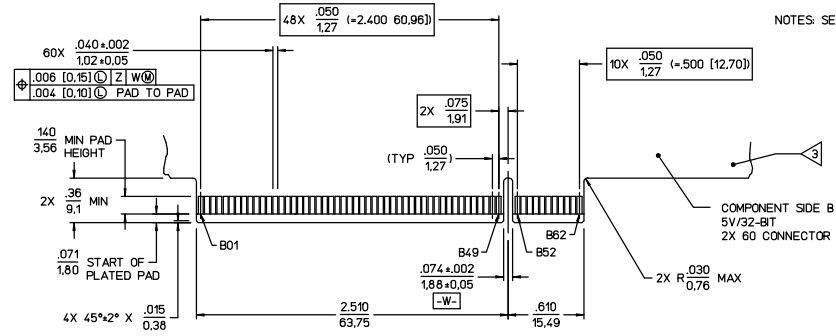
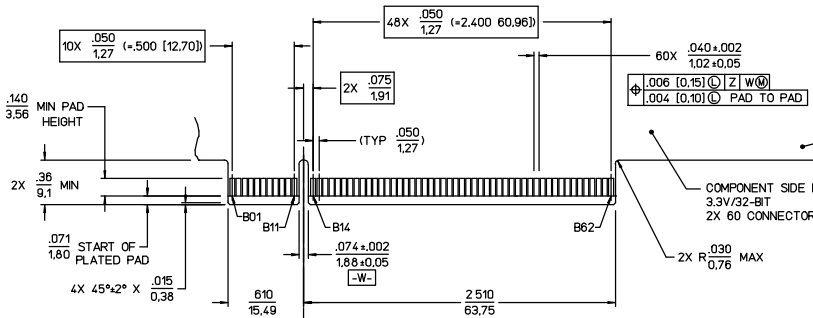
CEE2X92SC-V35Z48W CONNECTOR SHOWN FOR 5V/64-BIT APPLICATION

CEE2X92SC-V53Z48W CONNECTOR SHOWN FOR 3.3V/64-BIT APPLICATION



ALL REVISIONS RECORDED ON SHIT 1			
REV	REVISION DESCRIPTION	BY	CHKD DATE
COMPUTERBUS™ CONNECTOR			
CAT NO CEE2X_S-V_Z48W (SEE TABLE)			
DWG RELEASED TO CENTRAL FILE 06-03-94			
CAGE NO 09922	DON 901	PC 822	
© BURNDY CORPORATION 1994			
BURNDY			
FCI			
FRAMATOME CONNECTORS INTERNATIONAL			
DRWN	DDF 05-28-94		
CHKD	PJB 05-31-94		
DSGN	JC 06-03-94		
MKT	KM 06-03-94		
DC	JB 05-31-94		
DRAWING SCALE 2:1			
DRAWING NO			
BRSE96060 1			
SHEET 4 OF 6			

NOTES: SEE SHEET 1.

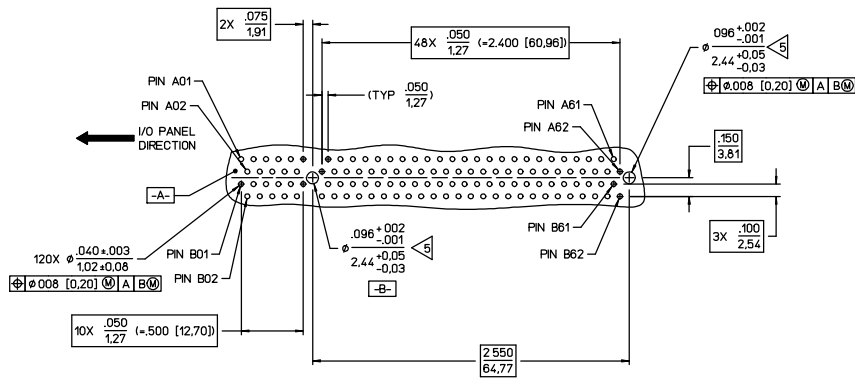


REV	ALL REVISIONS RECORDED ON SHT 1	BY	CHKD	DATE
-----	---------------------------------	----	------	------

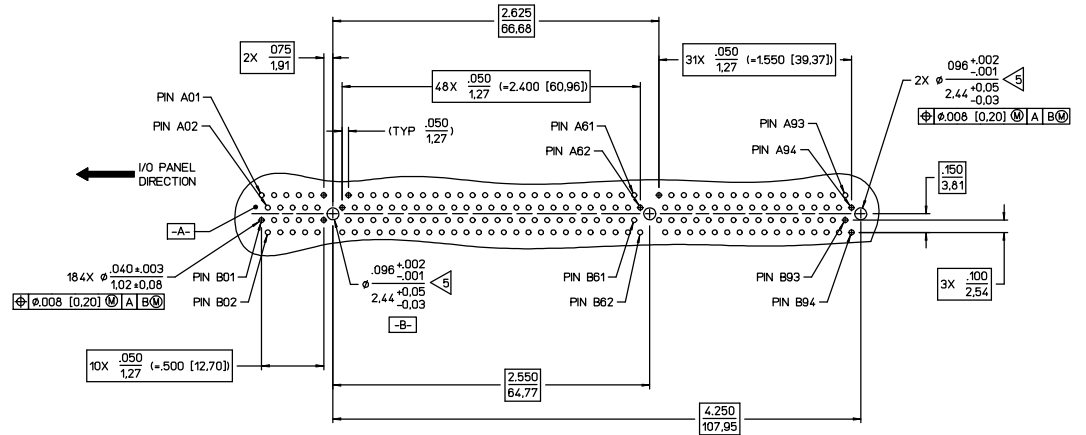
RECOMMENDED MATING DAUGHTERBOARD LAYOUTS						
CAT NO CEE2X__S-V_Z48W (SEE TABLE)						
DWG RELEASED TO CENTRAL FILE	06-03-94	DRWN	DDF	05-26-94		
CAGE NO 09922	DON 901	PC	822	CHKD	PJB	05-31-94
© BURNDY CORPORATION 1994						
DESIGN						
J.C.						
06-03-94						
V.M.K.T.						
K.M.						
06-03-94						
D.C.						
B.						
05-31-94						
DRAWING SCALE 2:1						
DRAWING NO						
BRSE96060						
REV						
1						
SHEET 5 OF 6						

LINEAR MEASURE:	INCH	INCH (mm)
	mm	
THIRD ANGLE PROJECTION		
- TOLERANCES -		
UNLESS OTHERWISE SPECIFIED		
NO OF DECIMAL PLACES IN INCHES	INCH (mm)	
ONE PLACE	±.1 (±2.5)	
TWO PLACES	±.02 (±0.5)	
THREE PLACES	±.005 (±0.13)	
ANGLES ±1°		

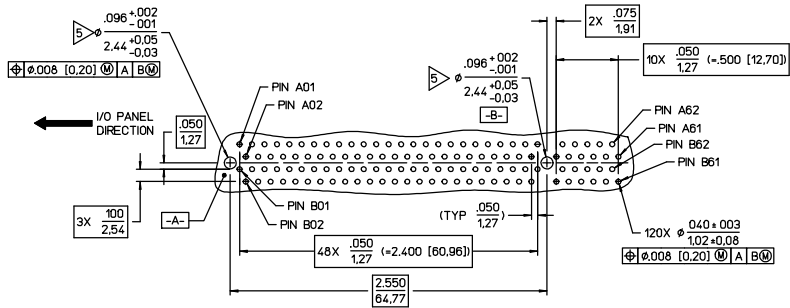




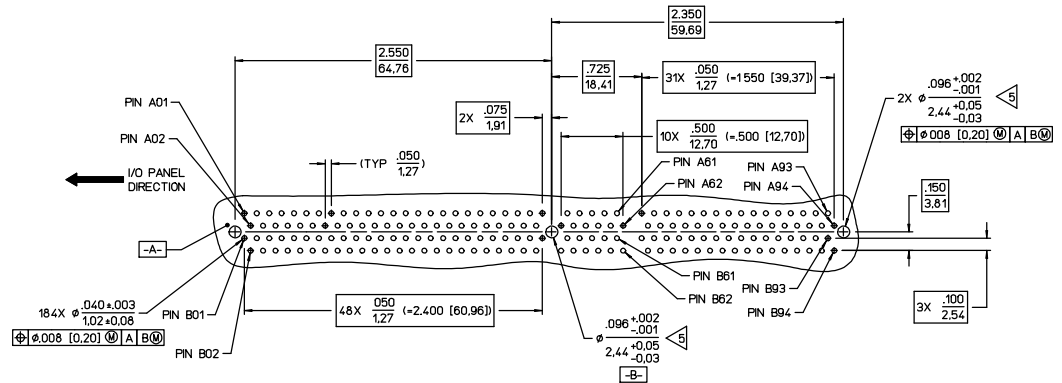
RECOMMENDED MOTHERBOARD FOOTPRINT FOR 3.3V/32-BIT 2X 60 CONNECTOR (CONNECTOR SIDE)



RECOMMENDED MOTHERBOARD FOOTPRINT FOR 3.3V/64-BIT (CONNECTOR SIDE)



RECOMMENDED MOTHERBOARD FOOTPRINT FOR 5V/32-BIT CONNECTOR (CONNECTOR SIDE)



RECOMMENDED MOTHERBOARD FOOTPRINT FOR 5V/64-BIT 2X92 CONNECTOR (CONNECTOR SIDE)

REV	ALL REVISIONS RECORDED ON SHIT 1	BY	CHKD	DATE
-----	----------------------------------	----	------	------

RECOMMENDED MOTHERBOARD FOOTPRINTS				
CAT NO CEE2X...S-V_Z48W (SEE TABLE)				
DRWN	DDF	05-26-94		
CHKD	PJB	05-31-94		
DESIGN	JC	06-03-94		
WKT	KM	06-03-94		
DC	B	05-31-94		
DRAWING SCALE 2:1				
DRAWING NO				
BRSE96060 1				
SHEET 6 OF 6				

LINEAR MEASURE:	INCH	INCH (mm)
THIRD ANGLE PROJECTION		
- TOLERANCES -		
UNLESS OTHERWISE SPECIFIED		
NO OF DECIMAL PLACES IN INCHES	INCH (mm)	
ONE PLACE	±.1 (±2.5)	
TWO PLACES	±.02 (±0.5)	
THREE PLACES	±.005 (±0.13)	
ANGLES ±1°		

