



### Features

- Frequency Range: 10~2000MHz
- Low Noise: 1.7dB(Typical)
- Dynamic: 16.5dBm(Typical)
- Standard Hermetic Package TO-8C, SMO-8C
- Operating Temperature Range: -55°C ~ +85°C

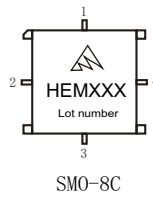
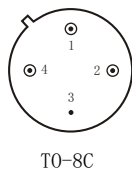
### Specifications (50 Ω, V<sub>CC</sub> = +5V, T<sub>A</sub> = -55°C ~ +85°C)

Parameter	Symbol	Unit	Guaranteed	Typical
Frequency Range	f <sub>L</sub> ~f <sub>H</sub>	MHz	10~2000	5~2200
Gain	G <sub>p</sub>	dB	≥15	16.5
Gain Flatness	ΔG <sub>p</sub>	dB	≤1.0	0.6
Noise Figure	F <sub>n</sub>	dB	≤3.5 Δ	1.7
Input VSWR	VSWR <sub>i</sub>	---	≤2.0:1 Δ	1.3:1
Output VSWR	VSWR <sub>o</sub>	---	≤2.0:1 Δ	1.5:1
Output Power @ 1dB Compression	P <sub>-1*</sub>	dBm	≥15.0* Δ	16.5
DC Current	I <sub>CC</sub>	mA	≤70	55

\*f = 1500MHz; “Δ” T<sub>A</sub> = 24 ± 1°C;

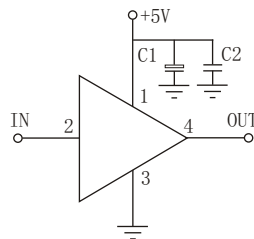
### Maximum Rating

- DC Voltage : +7V<sub>DC</sub>
- RF Input: +13dBm
- Storage Temp: +125°C



### Application Notes

1. Typical application shown as right, C<sub>1</sub> = 10~33 μF ; C<sub>2</sub> = 3300~6800pF;
2. See assembly section for mounting information
3. Connectorized package(SMA-1) available
4. ESD observe handling precautions



### Typical Curves

