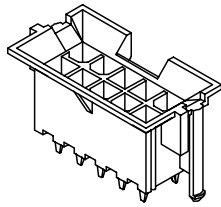
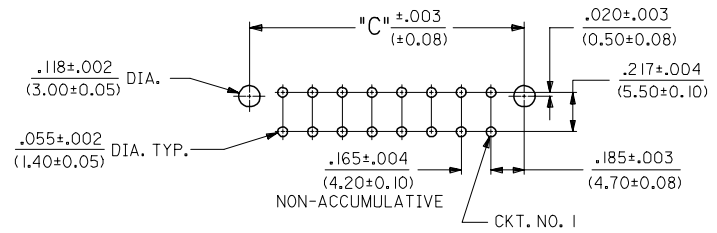
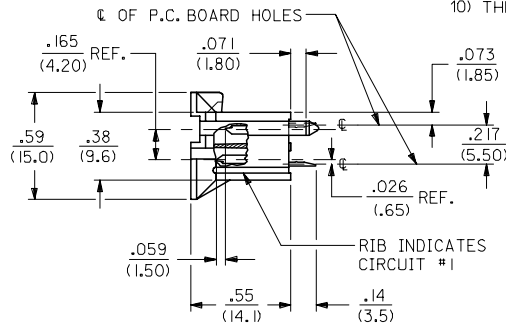
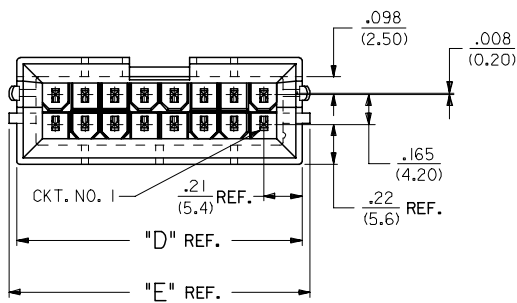


	13	12	11	10	9	8	7	6	5	4	3	2	1
	CIRCUIT SIZE	DIM. 'A'	DIM. 'B'	DIM. 'C'	DIM. 'D'	DIM. 'E'							
J	2	—	.21 (5.4)	.370 (9.40)	.425 (10.80)	.520 (13.20)							
	4	.17 (4.2)	.38 (9.6)	.535 (13.60)	.590 (15.00)	.685 (17.40)							
I	6	.33 (8.4)	.54 (13.8)	.701 (17.80)	.756 (19.20)	.850 (21.60)							
	8	.50 (12.6)	.71 (18.0)	.866 (22.00)	.921 (23.40)	1.016 (25.80)							
H	10	.66 (16.8)	.87 (22.2)	1.031 (26.20)	1.087 (27.60)	1.181 (30.00)							
	12	.83 (21.0)	1.04 (26.4)	1.197 (30.40)	1.252 (31.80)	1.346 (34.20)							
G	14	.99 (25.2)	1.20 (30.6)	1.362 (34.60)	1.417 (36.00)	1.512 (38.40)							
	16	1.16 (29.4)	1.37 (34.8)	1.528 (38.80)	1.583 (40.20)	1.677 (42.60)							
F	18	1.32 (33.6)	1.54 (39.0)	1.693 (43.00)	1.748 (44.40)	1.843 (46.80)							
E	20	1.49 (37.8)	1.70 (43.2)	1.858 (47.20)	1.913 (48.60)	2.008 (51.00)							
D	22	1.65 (42.0)	1.87 (47.4)	2.024 (51.40)	2.079 (52.80)	2.173 (55.20)							
C	24	1.82 (46.2)	2.03 (51.6)	2.189 (55.60)	2.244 (57.00)	2.339 (59.40)							

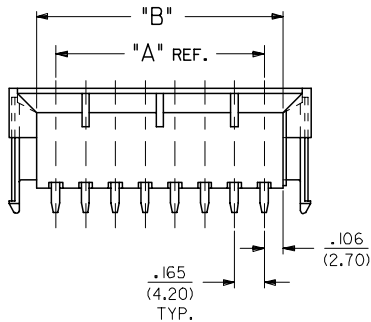


NOTES:

- HOUSING MATERIAL AND OPTIONS:
 - A - NYLON 6/6, U.L. 94V-2, WITHOUT DRAIN HOLES, COLOR: NATURAL.
 - B - NYLON 6/6, U.L. 94V-0, WITHOUT DRAIN HOLES, COLOR: NATURAL.
 - C - NYLON 6/6, U.L. 94V-2, WITH DRAIN HOLES, COLOR: NATURAL.
 - D - NYLON 6/6, U.L. 94V-0, WITH DRAIN HOLES, COLOR: NATURAL.
- TERMINAL MATERIAL: BRASS ALLOY 260.
- PART MATES WITH MINI-FIT RECEPTACLES # 5557 & # 42474.
- PACKAGING: TRAY PACK PER PK-42440-001.
- PART ALLOWS FOR UP TO .100/(2.54) MISALIGNMENT WITH MATING RECEPTACLE IN ANY DIRECTION. SEE MATING CONNECTOR DRAWINGS FOR SPECIFIC ALLOWANCES.
- TERMINAL PLATING:
 - *A - .000100/(0.00254) MIN. MATTE TIN OVER .000050/(0.00127) MIN. NICKEL.
 - *B - .000050/(0.00127) MIN. SELECT GOLD AND .000100/(0.00254) MIN. SELECT MATTE TIN OVER .000050/(0.00127) MIN. NICKEL OVERALL.
 - D - .000100/(0.00254) MIN. BRIGHT TIN OVER .000050/(0.00127) MIN. NICKEL.
 - *E - .000030/(0.00076) MIN. SELECT GOLD AND .000100/(0.00254) MIN. SELECT MATTE TIN OVER .000050/(0.00127) MIN. NICKEL OVERALL.
- THE PRIMARY SHIPPING CARTON WILL BE LABELED 'COMPLIANT TO RoHS DIRECTIVE 2002/95/ AND ELV ANNEX II OF DIRECTIVE 2000/53/EC.' CARTONS WITHOUT THIS LABEL MAY CONTAIN PRODUCT WITH TIN-LEAD PLATING.
- PRODUCT SPECIFICATION AND PROCESSING PARAMETERS: SEE PS-5556-002
- CONNECTOR ASSEMBLIES ARE NOT TO BE MATED OR UNMATED WHILE CIRCUITS ARE LIVE.
- ITEM NUMBERS PRECEDED BY AN 'X' IN THE CHART ARE NOT AVAILABLE.
- THIS PART IS NOT DESIGNED FOR CURRENT SHARING.



RECOMMENDED HOLE LAYOUT FOR .070/(1.78) MAX. THICK P.C. BOARD



ADD -0048 & -0049 EC NO: UCP2006-1630 DRW:ADRAINOL 2006/01/25 CHKD:GPOUGAR 2006/01/25 APPR:ICOMERCI 2006/01/26	QUALITY SYMBOLS ▽=0 ▽=0	GENERAL TOLERANCES (UNLESS SPECIFIED)		DIMENSION STYLE IN/MM		SCALE 1:1	DESIGN UNITS METRIC	THIRD ANGLE PROJECTION		
		4 PLACES ± --- ± ---	mm INCH	DRAWN BY AFG	DATE	TITLE	2-24 CKT. VERT. HEADER MINI-FIT B.M.I. MAKE FIRST/BREAK LAST			
		3 PLACES ± --- ± .010	CHECKED BY RJF	DATE	DATE					
		2 PLACES ± 0.25 ± .014	APPROVED BY RJF	DATE	DATE	MATERIAL NO. SEE CHART	DOCUMENT NO. SDA-43459-****	SHEET NO. 1 OF 3		
1 PLACE ± 0.36 ± ---	ANGULAR ±1/2°	DRAFT WHERE APPLICABLE MUST REMAIN WITHIN DIMENSIONS		THIS DRAWING CONTAINS INFORMATION THAT IS PROPRIETARY TO MOLEX INCORPORATED AND SHOULD NOT BE USED WITHOUT WRITTEN PERMISSION						

ITEM NO.	CHARACTERISTIC DESCRIPTION	TERMINAL VERSION REQUIRED AT EACH CIRCUIT LOCATION: (SEE CODES AT RIGHT)																							
		1	2	3	4	5	6	7	8	9	10	11	12	13	14	15	16	17	18	19	20	21	22	23	24
J	43459-0035	5	9	9	9	9	5	9	9	9	9	-	-	-	-	-	-	-	-	-	-	-	-	-	
	43459-0036	10	3	10	10	10	10	3	10	10	10	-	-	-	-	-	-	-	-	-	-	-	-		
	43459-0037	3	10	10	10	10	10	10	10	10	10	-	-	-	-	-	-	-	-	-	-	-	-		
	43459-0038	9	9	9	9	9	9	9	9	9	9	5	9	9	9	9	9	9	9	9	9	9	9		
I	43459-0039	3	10	10	10	10	10	10	3	10	10	10	10	10	-	-	-	-	-	-	-	-	-		
	43459-0040	9	9	9	9	9	5	5	5	5	5	-	-	-	-	-	-	-	-	-	-	-	-		
	43459-0041	8	8	8	8	1	1	-	-	-	-	-	-	-	-	-	-	-	-	-	-	-	-		
	43459-0042	3	3	3	3	3	3	3	3	3	3	3	3	3	3	10	10	-	-	-	-	-	-		
H	43459-0043	8	8	8	8	8	8	8	-	1	1	-	8	8	8	8	8	8	8	-	1	1	-	8	
	43459-0044	10	10	10	3	10	10	10	10	10	10	-	-	-	-	-	-	-	-	-	-	-	-		
	43459-0045	10	3	3	10	10	3	10	10	10	10	-	-	-	-	-	-	-	-	-	-	-	-		
	43459-0046	10	10	10	10	10	10	3	3	3	3	-	-	-	-	-	-	-	-	-	-	-	-		
G	43459-0047	3	3	3	3	3	3	3	3	3	3	3	3	3	3	3	3	3	3	3	3	3	3		
	43459-0048	9	5	5	9	-	-	-	-	-	-	-	-	-	-	-	-	-	-	-	-	-	-		
	43459-0049	10	3	3	10	-	-	-	-	-	-	-	-	-	-	-	-	-	-	-	-	-	-		

TERM. CODES FOR CHART AT LEFT		
TERMINAL NO.	PLATING /	MATERIAL
1=MAKE-FIRST	A	BRASS
2=MAKE-FIRST	B	BRASS
3=MAKE-FIRST	E	BRASS
----	---	----
5=MAKE-FIRST	D	BRASS
----	---	----
7=STANDARD	B	BRASS
8=STANDARD	A	BRASS
9=STANDARD	D	BRASS
10=STANDARD	E	BRASS

CHARACTERISTICS LEGEND:

CIRCUIT SIZE: _____ (***)
(02-24)

HOUSING MATERIAL AND OPTIONS: _____ (***)
 A=NYLON 6/6, U.L. 94V-2, WITHOUT DRAIN HOLES, COLOR: NATURAL.
 B=NYLON 6/6, U.L. 94V-0, WITHOUT DRAIN HOLES, COLOR: NATURAL.
 C=NYLON 6/6, U.L. 94V-2, WITH DRAIN HOLES, COLOR: NATURAL.
 D=NYLON 6/6, U.L. 94V-0, WITH DRAIN HOLES, COLOR: NATURAL.

TERMINAL MATERIAL: _____ (***)
 A=BRASS ALLOY 260

TERMINAL PLATING (SEE NOTE 7): _____ (***)

A= 100 MIN. MATTE TIN OVER 50 MIN. NICKEL.
 B= 50 MIN. GOLD AND 100 MIN. MATTE TIN OVER 50 MIN. NICKEL OVERALL.
 D= 100 MIN. BRIGHT TIN OVER 50 MIN. NICKEL.
 E= 30 MIN. GOLD AND 100 MIN. MATTE TIN OVER 50 MIN. NICKEL OVERALL.

SEE SHEET 1 FCC NO: UCP2006-1630 DRAWN: ADRIANOL 2006/01/25 CHKD: GPOLGAR 2006/01/25 APPR: ICOMERCI 2006/01/26	QUALITY SYMBOLS	GENERAL TOLERANCES (UNLESS SPECIFIED)	DIMENSION STYLE	SCALE	DESIGN UNITS	THIRD ANGLE PROJECTION
		mm INCH	IN/MM	---	METRIC	
		4 PLACES ± --- ± ---	DRAWN BY DATE	TITLE		
		3 PLACES ± --- ± ---	JW 2000/11/07	2-24 CKT. VERT. HEADER MINI-FIT B.M.I. MAKE FIRST/BREAK LAST		
	2 PLACES ± --- ± ---	CHECKED BY DATE	MOLEX MOLEX INCORPORATED			
	1 PLACE ± --- ± ---	MB 2000/11/07	MATERIAL NO. DOCUMENT NO. SHEET NO.			
	ANGULAR ± --- °	APPROVED BY DATE	SDA-43459-**** 3 OF 3			
		RE 2000/11/07	THIS DRAWING CONTAINS INFORMATION THAT IS PROPRIETARY TO MOLEX INCORPORATED AND SHOULD NOT BE USED WITHOUT WRITTEN PERMISSION			
			DRAFT WHERE APPLICABLE MUST REMAIN WITHIN DIMENSIONS			