

COMPACT POWER RELAY

1 POLE—25A

(FOR AUTOMOTIVE APPLICATIONS)

FBR51, 52 SERIES

www.DataSheet4U.com

■ FEATURES

- Compact and lightweight structure
(42% of the volume of the FBR160 relay)
- High current contact capacity
(carrying current: 35 A/10 minutes, 25 A/1 hour)
- High resistance to vibration and shock
- Improved heat resistance and extended operation range
- Two contact gap options
(FBR51: 0.3 mm, FBR52: 0.6 mm)
- Three types of contact material



■ ORDERING INFORMATION

[Example] $\frac{\text{FBR51}}{\text{(a)}}$ $\frac{\text{N}}{\text{(b)}}$ $\frac{\text{D12}}{\text{(c)}}$ - $\frac{\text{W}}{\text{(d)}}$ $\frac{\text{**}}{\text{(e)}}$

(a)	Series Name	FBR51 : Standard type (contact gap 0.3 mm) FBR52 : Wider contact gap type (contact gap 0.6 mm)
(b)	Enclosure	N : Plastic sealed type
(c)	Nominal Voltage	D06 : 6 VDC D09 : 9 VDC D10 : 10 VDC D12 : 12 VDC
(d)	Contact Material	W : Silver-tin oxide indium W1 : Silver-tin oxide indium (high power type) WL : Silver-tin oxide indium (1 lamp loads, see applications table)
(e)	Custom Designation	To be assigned custom specification

FBR51, 52 SERIES

■ SPECIFICATIONS

Item		Specifications		
		W contact	W1 contact	WL contact
Contact	Arrangement	1 form C (SPDT)		1 form A (SPST)
	Material	Silver-tin oxide indium	Silver-tin oxide indium (high power type)	Silver-tin oxide indium
	Voltage Drop (Resistance)	Maximum 100mV (at 2A 12 VDC)		
	Rating	14 VDC 20 A (motor free load)	14 VDC 25 A (motor free load)	115 Watt lamp at 14 VDC
	Maximum Carrying Current	35 A/10 minutes, 25 A/ 1 hour (25° C, 100% rated coil voltage)		
	Maximum Inrush Current (Reference)	60 A		40 A
	Max. Switching Current (Reference)	35 A 16 VDC		
	Min. Switching Load* ¹ (Reference)	6 VDC 1 A		
Coil	Operating Temperature Range	-40° C to +85° C (no frost)		
	Storage Temperature Range	-40° C to +100° C (no frost)		
Time Value	Operate (at nominal voltage)	Maximum 10 ms		
	Release (at nominal voltage)	Maximum 5ms		
Life	Mechanical	10 x 10 ⁶ operations minimum		
	Electrical	2 x10 ⁵ ops. min. 14 VDC 20 A Locked motor load	2 x10 ⁵ ops. min. 14 VDC 25 A Locked motor load	2.5 x10 ⁵ ops. min. 115 Watts lamp, 14 VDC
Other	Vibrations Resistance		10 to 55 Hz (double amplitude of 1.5mm)	
	Shock Resistance	Misoperation	100 m/s ²	
		Endurance	1,000 m/s ²	
Weight		Approximately 6g		

*1 Values when switching a resistive load at normal room temperature and humidity and in a clean environment. The minimum switching load varies with the switching frequency and operating environment.

FBR51, 52 SERIES

■ COIL DATA CHART

1. FBR51 Series

MODEL		Nominal voltage	Coil resistance (±10%) (at 20°C)	Must operate voltage	Thermal resistance
W contact	W1 contact				
FBR51ND06-W	FBR51ND06-W1	6 VDC	60 Ω	3.6 VDC (at 20°C) 4.5 VDC (at 85°C)	73°C/W
FBR51ND09-W	FBR51ND09-W1	9 VDC	135 Ω	5.4 VDC (at 20°C) 6.8 VDC (at 85°C)	
FBR51ND10-W	FBR51ND10-W1	10 VDC	180 Ω	6.3 VDC (at 20°C) 7.9 VDC (at 85°C)	
FBR51ND12-W	FBR51ND12-W1	12 VDC	240 Ω	7.3 VDC (at 20°C) 9.2 VDC (at 85°C)	

2. FBR52 Series

MODEL		Nominal voltage	Coil resistance (±10%) (at 20°C)	Must operate voltage	Thermal resistance
W contact	W1 contact				
FBR52ND06-W	FBR52ND06-W1	6 VDC	45 Ω	3.6 VDC (at 20°C) 4.5 VDC (at 85°C)	65°C/W
FBR52ND09-W	FBR52ND09-W1	9 VDC	100 Ω	5.4 VDC (at 20°C) 6.8 VDC (at 85°C)	
FBR52ND10-W	FBR52ND10-W1	10 VDC	135 Ω	6.3 VDC (at 20°C) 7.9 VDC (at 85°C)	
FBR52ND12-W	FBR52ND12-W1	12 VDC	180 Ω	7.3 VDC (at 20°C) 9.2 VDC (at 85°C)	

FBR51, 52 SERIES

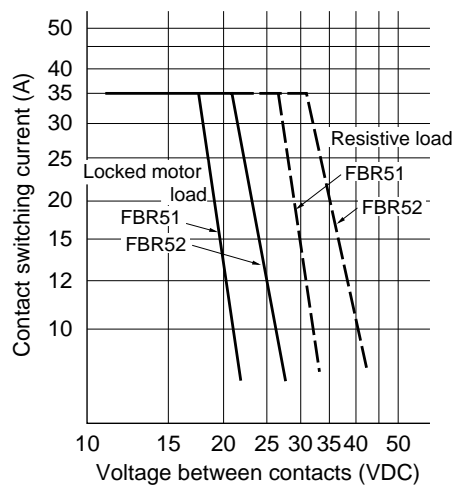
■ SUITABLE APPLICATIONS

Application	Normal load current (12 VDC system)	Description	Recommended model (example)	
			For 16 V or less motor load voltage	For instantaneous 20 V or more load voltage
Power Windows	20 to 25 A (switching at motor locking)	forward and reverse motor control	FBR51N□ -W FBR51N□ -W1	FBR52N□ -W FBR52N□ -W1
Automatic Door Lock	18 to 25 A (switching at motor locking)	forward and reverse motor control	FBR51N□ -W FBR51N□ -W1	FBR52N□ -W FBR52N□ -W1
Tilt-Lock Wheel	20 A (switching at motor locking)	forward and reverse motor control	FBR51N□ -W	FBR52N□ -W
Sunroof	20 to 30 A (switching at motor locking)	forward and reverse motor control	FBR51N□ -W	FBR52N□ -W
Adjustable Door Mirror	3 to 5 A (switching at motor locking)	forward and reverse motor control	FBR51N□ -W	
Automatic Antenna	8 to 12 A (INRUSH) break 2 A maximum (motor-free)	forward and reverse motor control	FBR51N□ -W	
Auto-Cruise	2 to 3 A	power shutoff and solenoid	FBR51N□ -W	
Lamp loads	115 Watts	for up to 250K operations	FBR51N□ -WL	
Others	Car Audio System, etc.		FBR51N□ -W	

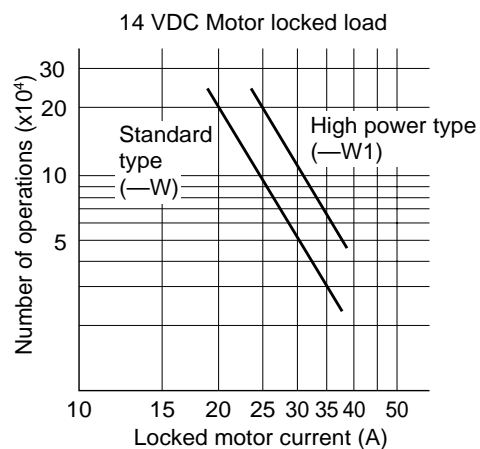
- For the load condition where higher voltage would be encountered during contact break, FBR52 series with wider contact gap is recommended.

■ CHARACTERISTIC DATA

1. MAXIMUM BREAK CAPACITY



2. LIFE

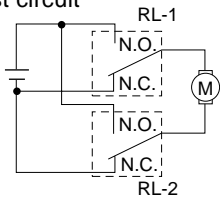


FBR51, 52 SERIES

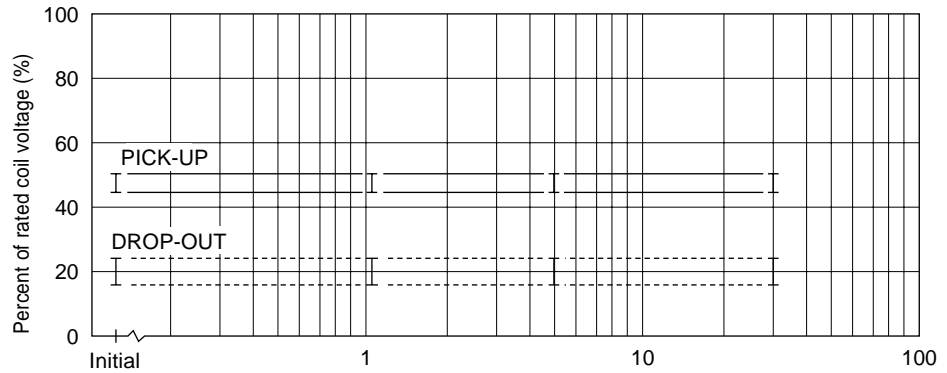
3. LIFE TEST (EXAMPLE)

- Test item
14 V DC-20 A
motor lock 200,000
operations minimum
(FBR52□-W type)

- Test circuit

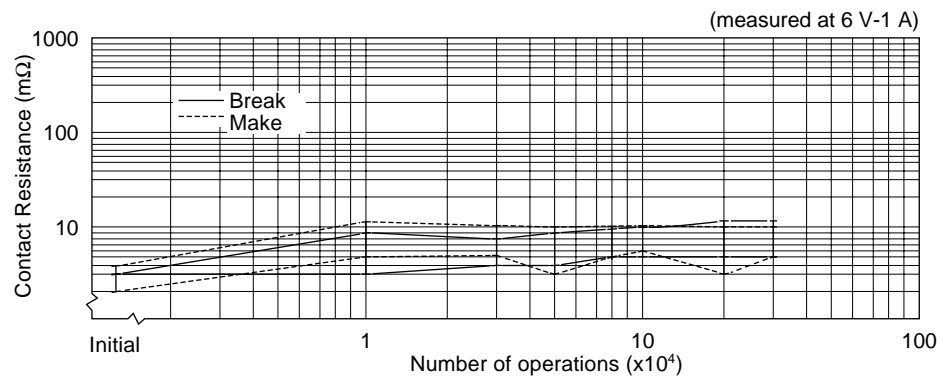
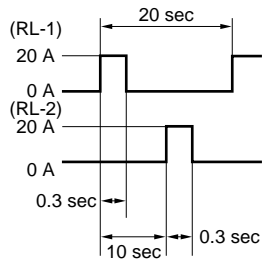


- Shift of pick-up drop-out voltage



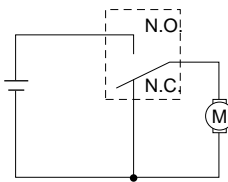
- Shift of contact resistance

- Current wave form

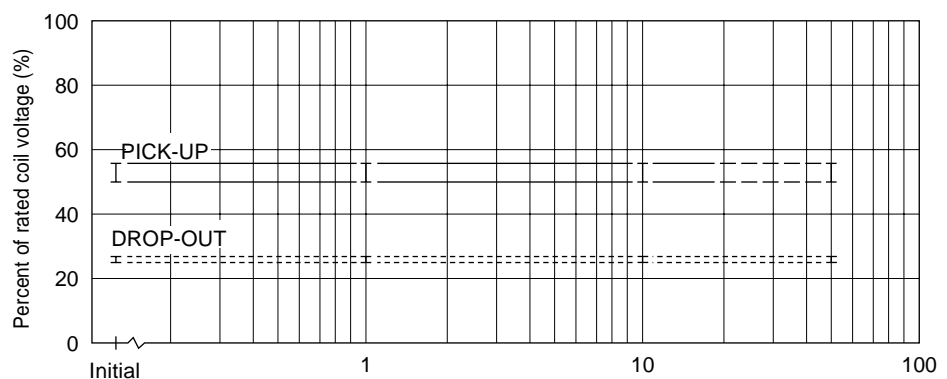


- Test item
14 V DC-20 A
motor free 400,000
operations minimum
(FBR51□-N type)

- Test circuit

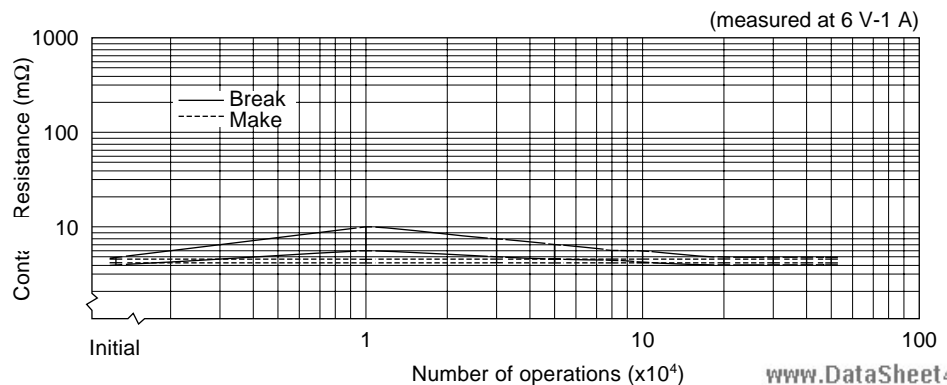
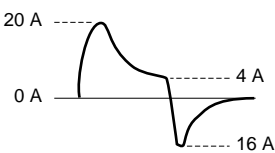


- Shift of pick-up drop-out voltage



- Shift of contact resistance

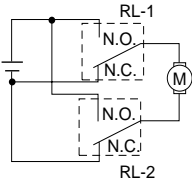
- Current wave form



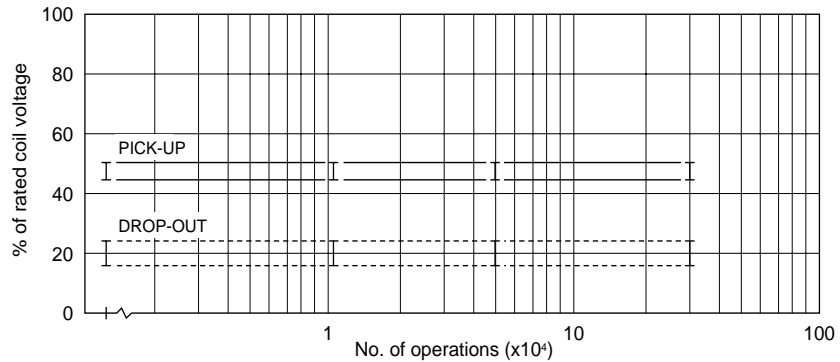
FBR51, 52 SERIES

- Test item
14 V DC-25 A
Motor lock
200,000 operations minimum
(FBR51 □-W1 type)

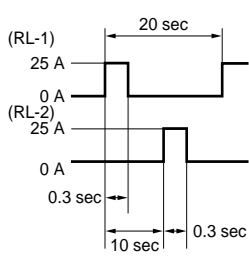
- Test circuit



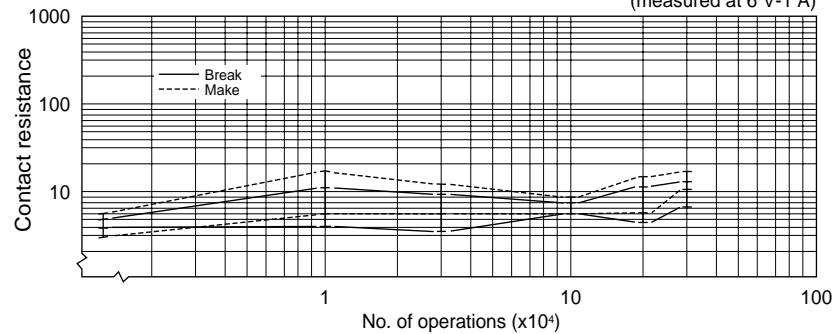
- Shift of pick-up and drop-out voltage



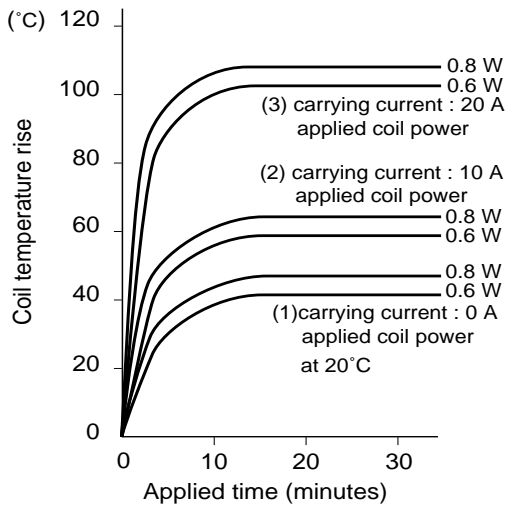
- Current wave form



- Shift of contact resistance



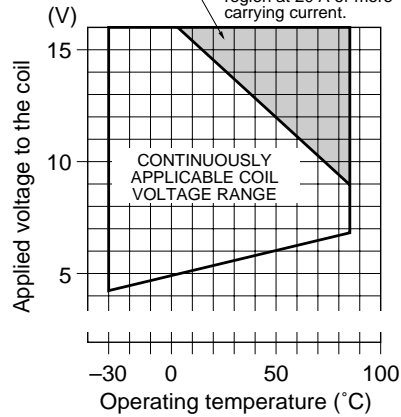
4. COIL TEMPERATURE RISE



5. OPERATING COIL VOLTAGE RANGE (EXAMPLE)

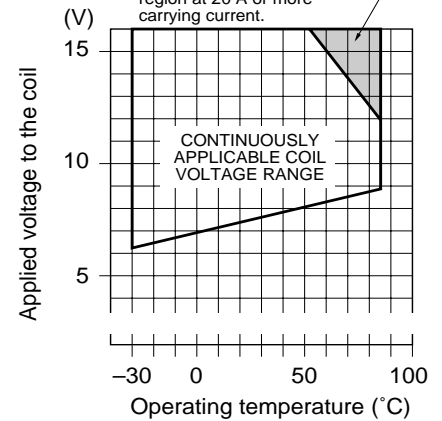
[FBR51ND09-□]

NOTE : Intermittent coil operation is required in this region at 20 A or more carrying current.



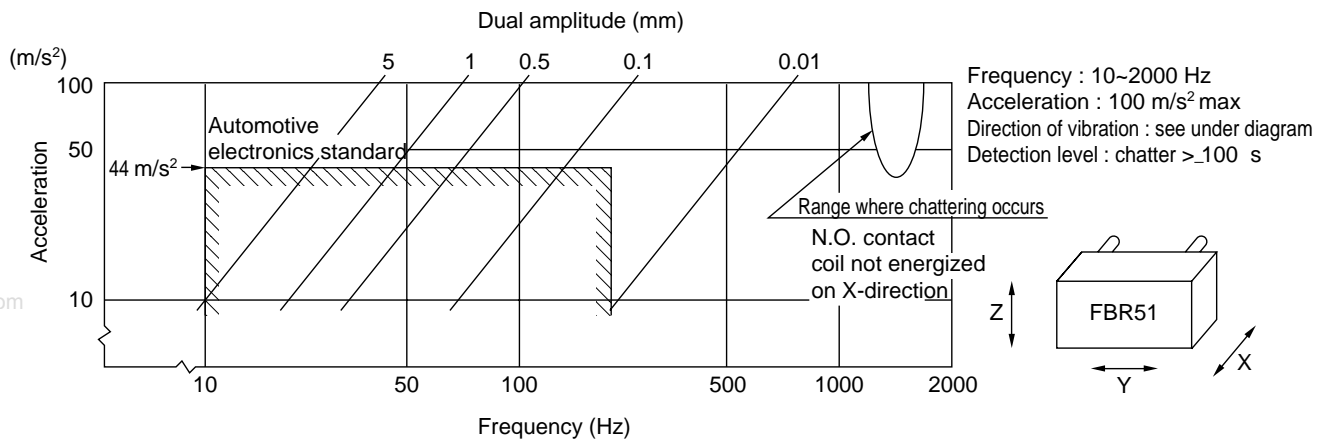
[FBR51ND12-□]

NOTE : Intermittent coil operation is required in this region at 20 A or more carrying current.

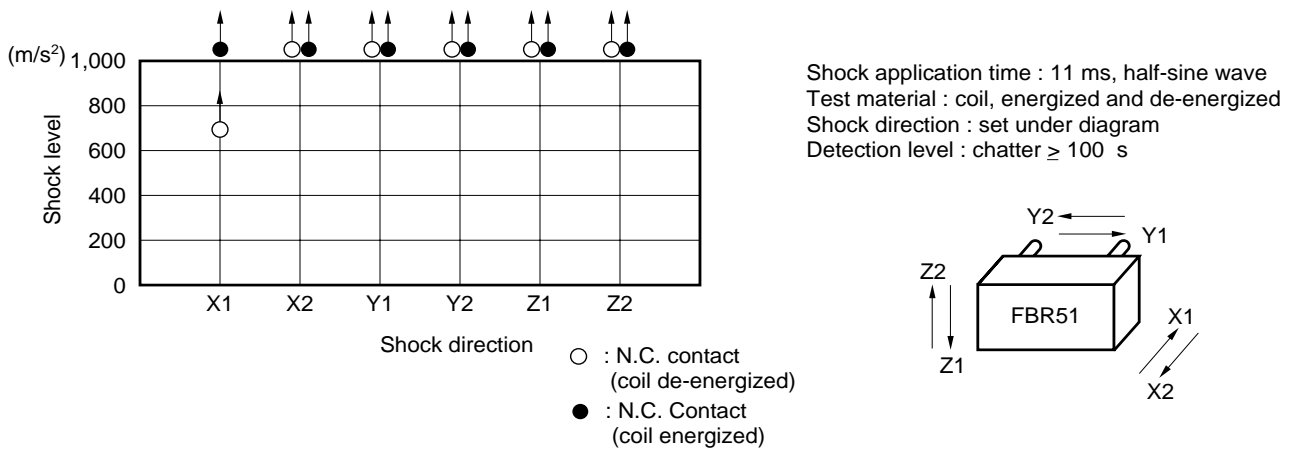


FBR51, 52 SERIES

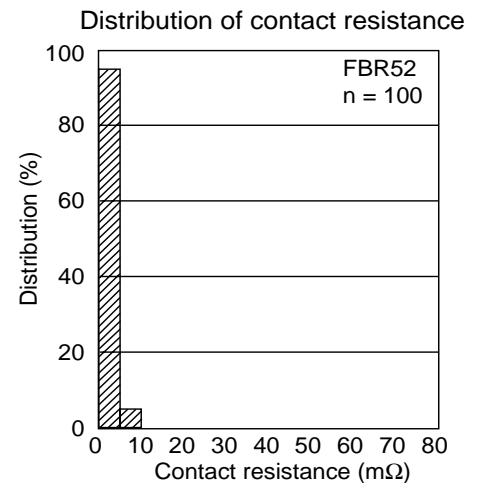
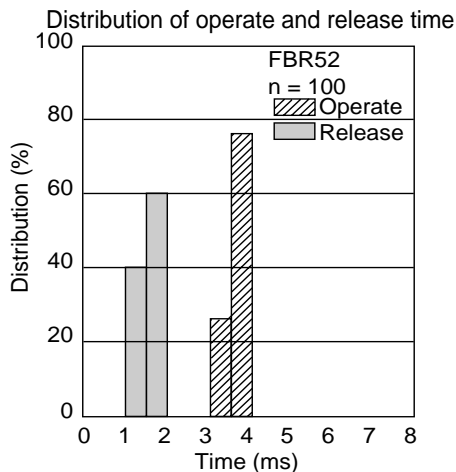
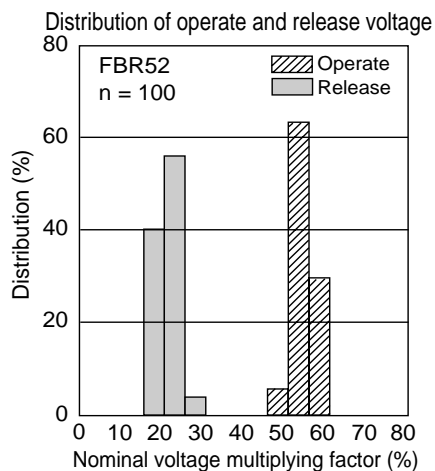
6. VIBRATION RESISTANCE CHARACTERISTICS



7. SHOCK RESISTANCE CHARACTERISTICS



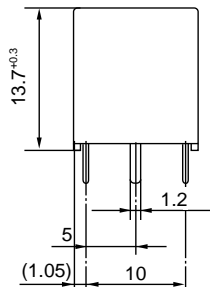
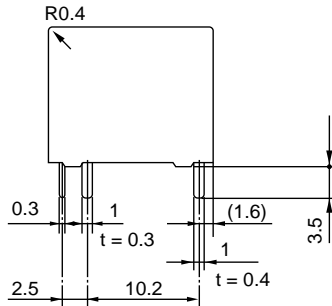
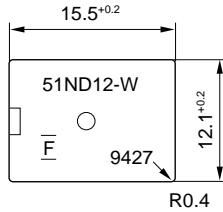
REFERENCE DATA



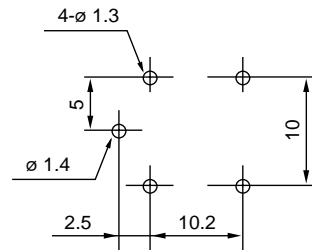
FBR51, 52 SERIES

■ DIMENSIONS

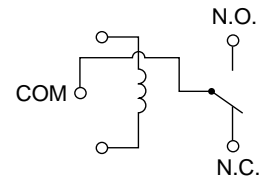
● Dimensions



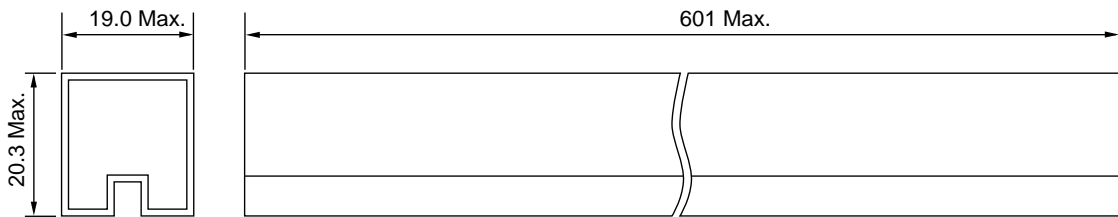
● PC board mounting hole layout (BOTTOM VIEW)



● Schemati (BOTTOM VIEW)



● Tube carrier



45 pcs/tube

Unit : mm

Fujitsu Components International Headquarter Offices

Japan

Fujitsu Component Limited
Gotanda-Chuo Building
3-5, Higashigotanda 2-chome, Shinagawa-ku
Tokyo 141, Japan
Tel: (81-3) 5449-7010
Fax: (81-3) 5449-2626
Email: promothq@ft.ed.fujitsu.com
Web: www.fcl.fujitsu.com

North and South America

Fujitsu Components America, Inc.
250 E. Caribbean Drive
Sunnyvale, CA 94089 U.S.A.
Tel: (1-408) 745-4900
Fax: (1-408) 745-4970
Email: marcom@fcai.fujitsu.com
Web: www.fcai.fujitsu.com

Europe

Fujitsu Components Europe B.V.
Diamantlaan 25
2132 WV Hoofddorp
Netherlands
Tel: (31-23) 5560910
Fax: (31-23) 5560950
Email: info@fceu.fujitsu.com
Web: www.fceu.fujitsu.com

Asia Pacific

Fujitsu Components Asia Ltd.
102E Pasir Panjang Road
#04-01 Citilink Warehouse Complex
Singapore 118529
Tel: (65) 6375-8560
Fax: (65) 6273-3021
Email: fcal@fcal.fujitsu.com
www.fcal.fujitsu.com

© 2003 Fujitsu Components America, Inc. All company and product names are trademarks or registered trademarks of their respective owners. Rev. 02/18/2003