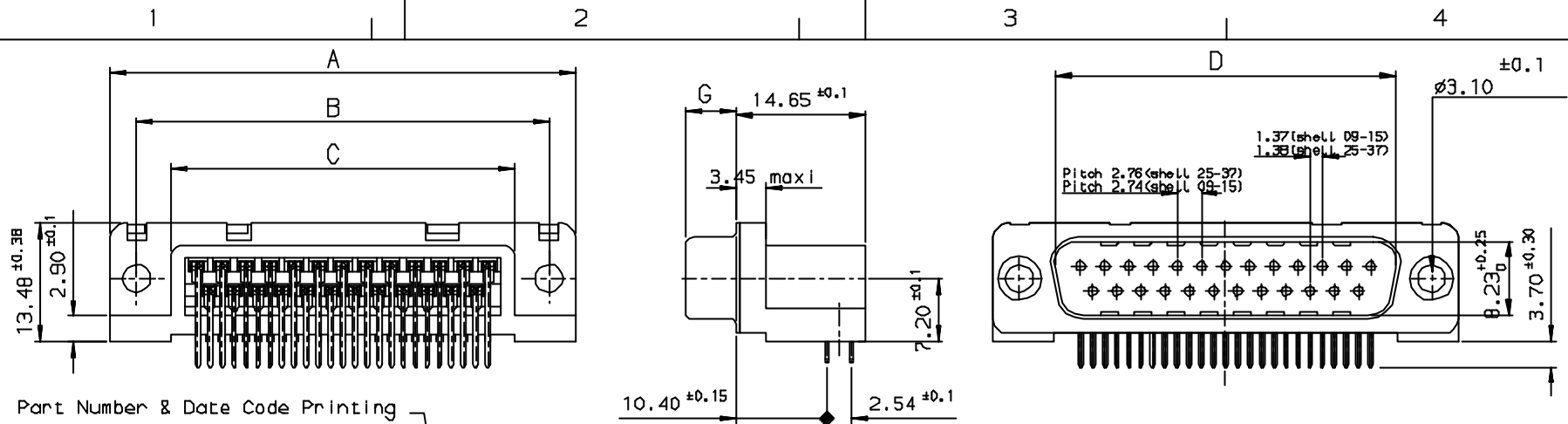


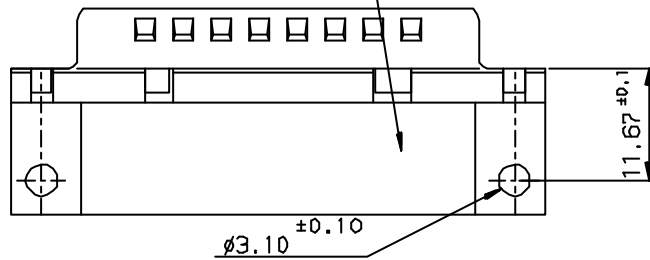
Tous droits strictement réservés. Reproduction ou communication à des tiers interdites sans autorisation écrite de la propriété de FCI. Droits de reproduction FCI.

FCI

All rights strictly reserved. Reproduction or communication to any third parties in any form without the written authority from the proprietor. Property of FCI. Copyright FCI.



Part Number & Date Code Printing



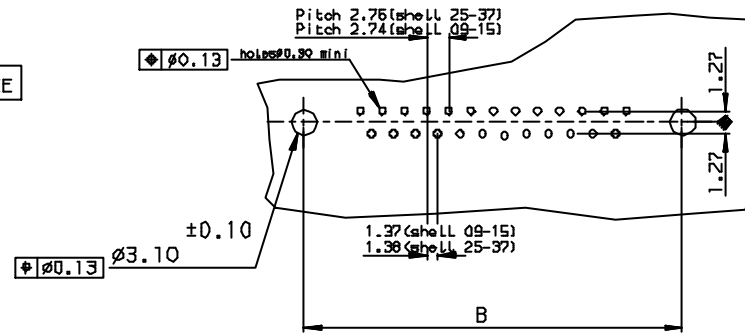
SHELL	A±0.38	B±0.12	C±0.10	D±0.25	G±0.25	PART NUMBER
09	30.81	24.99	16.96	16.79	5.90	D09P13B*PA00**
15	39.14	33.32	25.18	25.12	5.90	D15P13B*PA00**
25	53.03	47.04	39.12	38.84	5.70	D25P13B*PA00**
37	69.32	63.50	55.68	55.30	5.70	D37P13B*PA00**

LF FOR LEAD FREE

Plating: 4 --- Flash AU

Plating: 6 --- D.76µ AU

PC card drilling dimensions (after plating)
(thickness 1.60±0.20mm)



FOR ROHS DETAILS REFER DWG. NO. C01-8646-0000

REQUIREMENTS

Technical characteristics

Shell: steel tin plated
 Insulators: self-extinguishing black polyester, UL class 94V0
 Contacts size 20: brass, gold on mating end, bright tin on termination end over nickel on entire contact
 Cycle life: 5000 mini for plating 6
 2000 mini for plating 4

Electrical characteristics

max. current rating: 5A
 Test voltage: 1000V
 Rated voltage: 300V
 Contact resistance: <15mΩ
 Shell resistance: <5mΩ
 Insulation resistance: >5000MΩ

Climatic characteristics

Operating temperature range: -55° to +125°

Dimensions

in accordance with MIL-C-24308

e	DATE	REVISION DESCRIPTION
e	27/7/05	LEAD FREE DETAILS ADDED

Utr	Eon no	Dr	date
e	105-0124	JS	27/7/05

		✓	Tolerance LINEAR ±0.1 ANGULAR ±1°	Projection 	MM ↔
Dr JOHN SLEEDA	19/4/93	Product Family	D-SUB	Size	A3
Eng GEORGE VJ	19/4/93	Spec ref		Scale	
Chr GEORGE VJ	27/7/05	Material		ECN	
Appr K Somasundaram	27/7/05				
FCI	Title	MALE CONNECT. DELTA D right angle spill without accessories.		Dwg no	C01-8646-0162
	Rev.				e
	Catalog no	DELTA-D		CUSTOMER COPY	Sheet 1 of 1