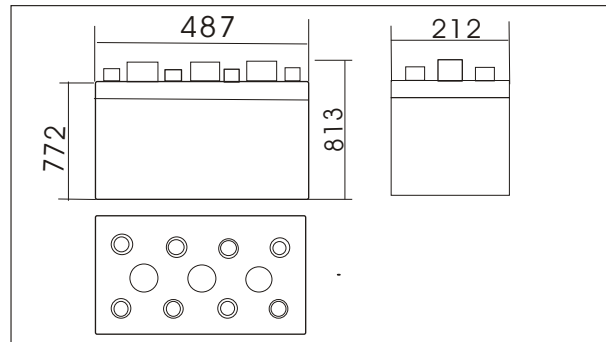




200PzV2500(2V2500Ah)



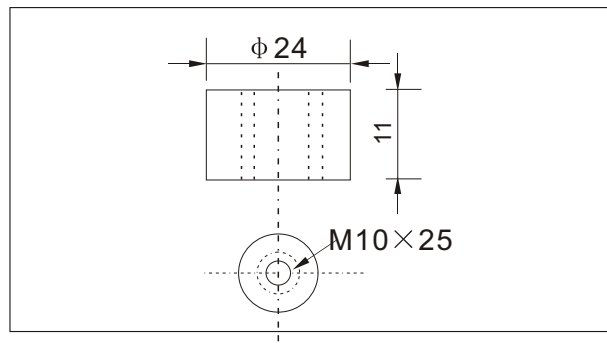
Outer dimensions (mm)



Specifications

Nominal Voltage	2 V	
Rated capacity (10 hour rate)	2500Ah	
Dimensions	Total Height	813 mm (32.0 inches)
	Height	772mm (30.39inches)
	Length	487 mm (19.17 inches)
	Width	212 mm (8.35inches)
Weight Approx	194Kg (426.8lbs)	

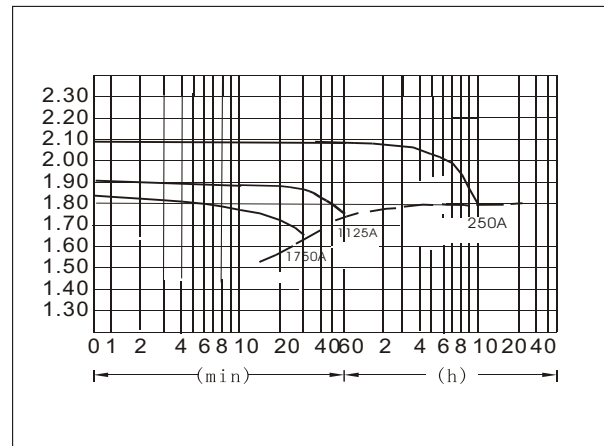
Terminal Type (mm)



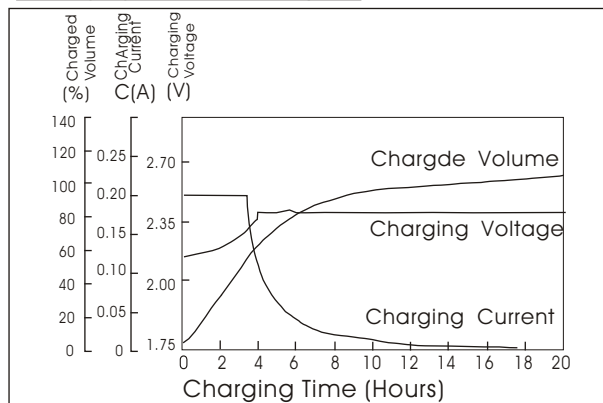
Characteristics

Capacity 25°C(77°F)	10 hour rate(250A)	2500Ah
	1 hour rate(1125A)	1125Ah
	0.5 hour rate(1750A)	875Ah
Capacity affected by Temperature (10hour rate)	40°C(104°F)	102%
	25°C(77°F)	100%
	0°C(32°F)	85%
	-15°C(5°F)	65%
Self-Discharge at 25°C(77°F)	Capacity after 3 month storage	91%
	Capacity after 6 month storage	82%
	Capacity after 12 month storage	64%
Terminal quantity	8	
Charge (constant Voltage)	Initial Charging Current less than 500.0A Voltage 2.25-2.40V	

Discharge Curves 25°C(77°F)



Charging characteristics(25°C)



Cycling Curves

