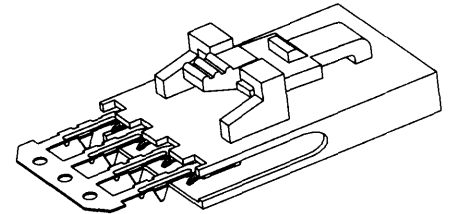


**molex® 2.54mm (.100") Pitch  
SL™**

**FFC/FPC Connector**

**70430**

**Single Row, Female  
Version G**



**FEATURES AND SPECIFICATIONS**

**Features and Benefits**

- Sizes 2 to 25 circuits
- Positive latch locks connector to header or panel mount
- Piercing crimp provides 3 high-pressure interfaces with the conductor
- Terminals preloaded into housing

**Reference Information**

Product Specification: PS-40556

Packaging: Tube

Tooling Information: See end of section

UL File No.: E29179

CSA File No.: LR19980

Mates With: C-Grid® locking headers and panel mounts

Designed In: Inches

**Electrical**

Voltage: 250V

Current: 2.0A (for Copper conductors)

Contact Resistance: 10mΩ max.

Dielectric Withstanding Voltage: 1500V

Insulation Resistance: 1000 MΩ min.

**Mechanical**

Contact Retention to Housing: 13.34N (3 lb) min.

Mating Force: 2.22N (.50 lb) max.

Unmating Force: 0.28N (.06 lb) min.

Wire Pull-Out Force: 26.69N (6 lb)

Durability: Tin/Lead—25 cycles max.

Gold—50 cycles max.

**Physical**

Housing: Polyester, UL 94V-0

Contact: Phosphor Bronze

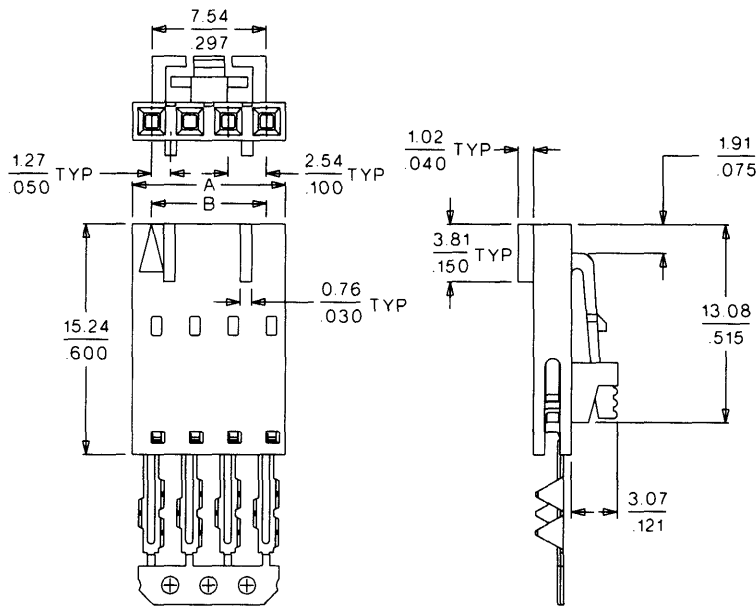
Plating: See Table

Operating Temperature: -40 to +105°C

FFC/FPC Connectors



**CATALOG DRAWING (FOR REFERENCE ONLY)**



**ORDERING INFORMATION AND DIMENSIONS**

Circuits	Order No.			Dimension	
	15µ" Gold	30µ" Gold	150µ" Tin/Lead	A	B
2	15-47-4023	15-47-4027	15-38-8020	5.05 (1.99)	2.54 (1.00)
3	15-47-4033	15-47-4037	15-38-8030	7.59 (2.99)	5.08 (2.00)
4	15-47-4043	15-47-4047	15-38-8040	10.13 (3.99)	7.62 (3.00)
5	15-47-4053	15-47-4057	15-38-8050	12.67 (4.99)	10.16 (4.00)
6	15-47-4063	15-47-4067	15-38-8060	15.21 (5.99)	12.70 (5.00)
7	15-47-4073	15-47-4077	15-38-8070	17.75 (6.99)	15.24 (6.00)
8	15-47-4083	15-47-4087	15-38-8080	20.29 (7.99)	17.78 (7.00)
9	15-47-4093	15-47-4097	15-38-8090	22.83 (8.99)	20.32 (8.00)
10	15-47-4103	15-47-4107	15-38-8100	25.37 (9.99)	22.86 (9.00)
11	15-47-4113	15-47-4117	15-38-8110	27.91 (10.99)	25.40 (10.00)
12	15-47-4123	15-47-4127	15-38-8120	30.45 (11.99)	27.94 (11.00)
13	15-47-4133	15-47-4137	15-38-8130	32.99 (12.99)	30.48 (12.00)

Circuits	Order No.			Dimension	
	15µ" Gold	30µ" Gold	150µ" Tin/Lead	A	B
14	15-47-4143	15-47-4147	15-38-8140	35.53 (1.399)	33.02 (1.300)
15	15-47-4153	15-47-4157	15-38-8150	38.07 (1.499)	35.56 (1.400)
16	15-47-4163	15-47-4167	15-38-8160	40.61 (1.599)	38.10 (1.500)
17	15-47-4173	15-47-4177	15-38-8170	43.15 (1.699)	40.64 (1.600)
18	15-47-4183	15-47-4187	15-38-8180	45.69 (1.799)	43.18 (1.700)
19	15-47-4193	15-47-4197	15-38-8190	48.23 (1.899)	45.72 (1.800)
20	15-47-4203	15-47-4207	15-38-8200	50.77 (1.999)	48.26 (1.900)
21	15-47-4213	15-47-4217	15-38-8210	53.31 (2.099)	50.80 (2.000)
22	15-47-4223	15-47-4227	15-38-8220	55.85 (2.199)	53.34 (2.100)
23	15-47-4233	15-47-4237	15-38-8230	58.39 (2.299)	55.88 (2.200)
24	15-47-4243	15-47-4247	15-38-8240	60.93 (2.399)	58.42 (2.300)
25	15-47-4253	15-47-4257	15-38-8250	63.47 (2.499)	60.96 (2.400)