

# POWER LINE CHOKE

## (DRUM CORE STYLE)

Electrical Specifications at 25°C

Parameter	Min.	Typ.	Max.	Units
Inductance	8.0	10	12	μH
$I_{MAX}^1$		25		A
DCR		8.5		mΩ
Lead Diameter		.0508 (1.29)		inches (mm)

### Test Conditions:

Inductance tested at 100 mV<sub>RMS</sub> and 300 kHz

1. Current for 10% drop in Inductance

### Custom Specifications:

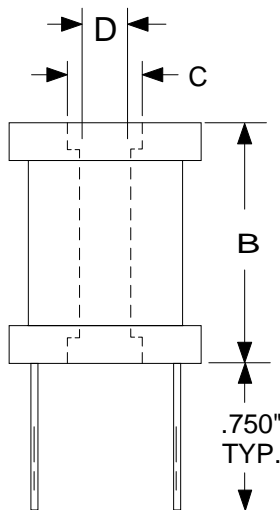
Working voltage 2000 volts typ.  
Isolation 2000 Vrms, from core to winding.

Part wound using wire with teflon sleaving.

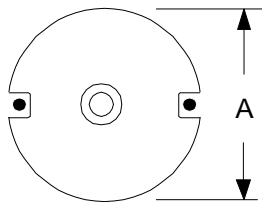
Bottom of part insulated with mylar tape rated at 6500 Volts.

Finish with a shrink tubing.

PHYSICAL DIMENSIONS All dimensions in inches



Dim.	inches
A	1.390
B	1.010
C	0.315
D	0.190



High Saturation  
Pre-Tinned Leads  
Center hole for mechanical mounting

Leads are .0508 (#16 AWG)  
Leads tinned to within 1/8" of body.

RHOMBUS P/N: <b>L-733</b>	
CUST P/N:	NAME:
DATE: <b>12/20/01</b>	SHEET: 1 OF 1