



# TAI-SAW TECHNOLOGY CO., LTD.

No. 3, Industrial 2nd Rd., Ping-Chen Industrial District,  
Taoyuan, 324, Taiwan, R.O.C.

TEL: 886-3-4690038 FAX: 886-3-4697532  
E-mail: [tstsales@mail.taisaw.com](mailto:tstsales@mail.taisaw.com) Web: [www.taisaw.com](http://www.taisaw.com)

## Approval Sheet For Product Specification

Issued Date:

Product Name: SAW Filter 868.30MHz SMD3.8X3.8mm

TST Parts No.: TA0828A

Customer Parts No.: \_\_\_\_\_

Company: _____
Division: _____
Approved by : _____
Date: _____

Checked by: Asin Lin

Approval by: Francis Chen

Date: 2008/01/24



# TAI-SAW TECHNOLOGY CO., LTD.

No. 3, Industrial 2nd Rd., Ping-Chen Industrial District,  
Taoyuan, 324, Taiwan, R.O.C.

TEL: 886-3-4690038 FAX: 886-3-4697532

E-mail: [tstsales@mail.taisaw.com](mailto:tstsales@mail.taisaw.com) Web: [www.taisaw.com](http://www.taisaw.com)

## SAW Filter 868.30 MHz

MODEL NO.: TA0828A

REV. NO.:1

### A. MAXIMUM RATING:

1. Input Power Level: 17 dBm
2. DC voltage: 0 V
3. Operating Temperature: -45°C to +120°C
4. Storage Temperature: -45°C to +120°C

RoHS Compliant  
Lead free  
Lead-free soldering

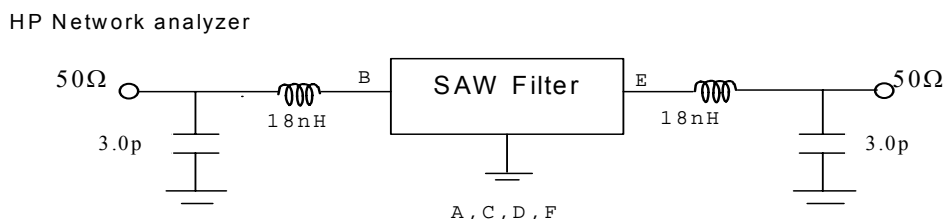
### B. ELECTRICAL CHARACTERISTICS:

Reference temperature: 25°C

Item	Min.	Typ.	Max.	Note
Center frequency $F_c$ (MHz)	-	868.30	-	1
Minimum I.L. (dB) IL	-	3.1	3.8	
Pass band (relative to $IL_{min}$ )				
868.1~868.5 MHz (dB)	-	0.6	2.0	1
868.0~868.6 MHz (dB)	-	0.9	3.0	
Pass bandwidth (relative to $IL_{min}$ ) $BW_3$ (KHz)	-	1300	-	
Attenuation:( relative to $IL_{min}$ ) (dB )				
10~830 MHz (dB )	40	45	-	1
830~850 MHz (dB )	35	40	-	
850~865.2 MHz (dB )	25	28	-	
871~874.5 MHz (dB )	15	24	-	
874.5~883 MHz (dB )	22	26	-	
883~900 MHz (dB )	30	35	-	
900~1000 MHz (dB )	40	45	-	
Impedance at $F_c$ ; Input $Z_{IN}=R_{IN}/C_{IN}$ Output $Z_{OUT}=R_{OUT}/C_{OUT}$	210Ω // 2.1 pF 210Ω // 2.1 pF			

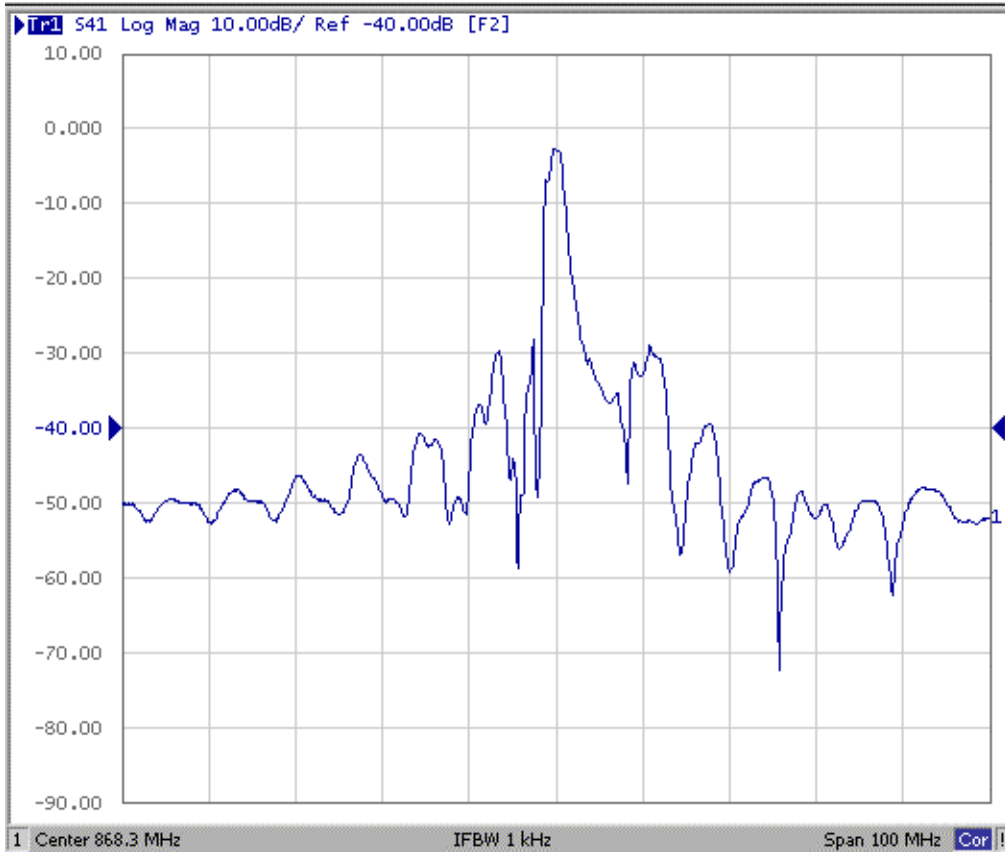
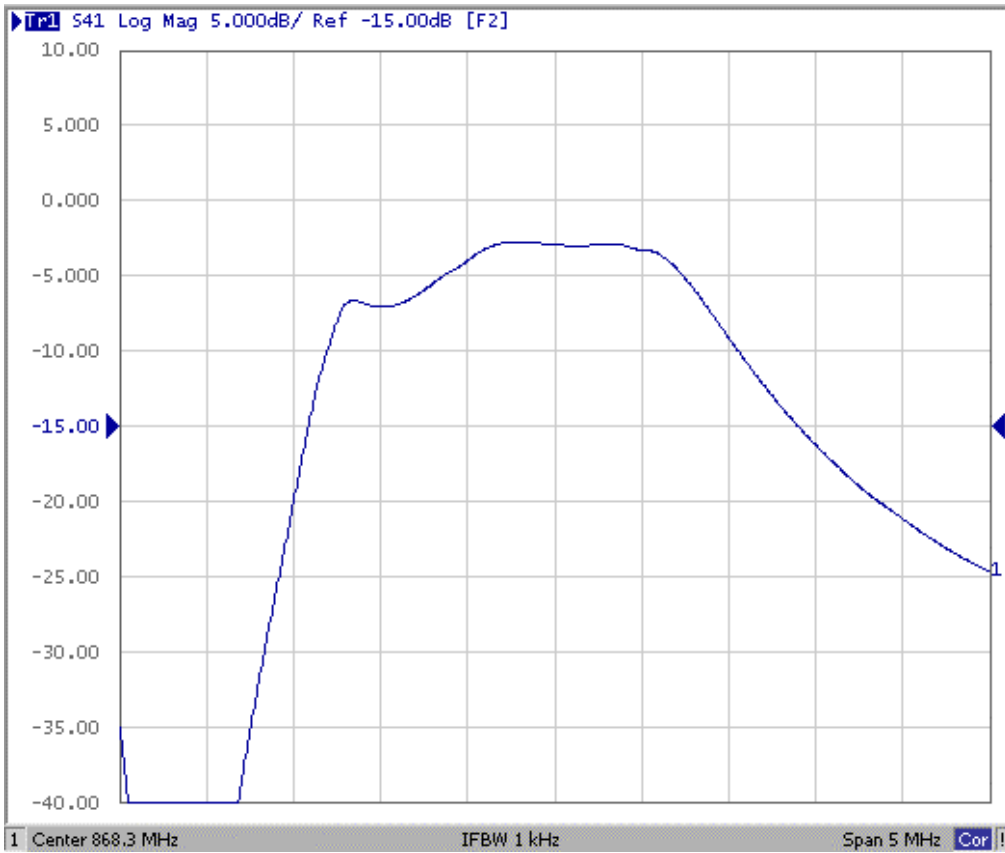
Note1. The standard definitions is in JIS C 6703

### C. MEASUREMENT CIRCUIT:

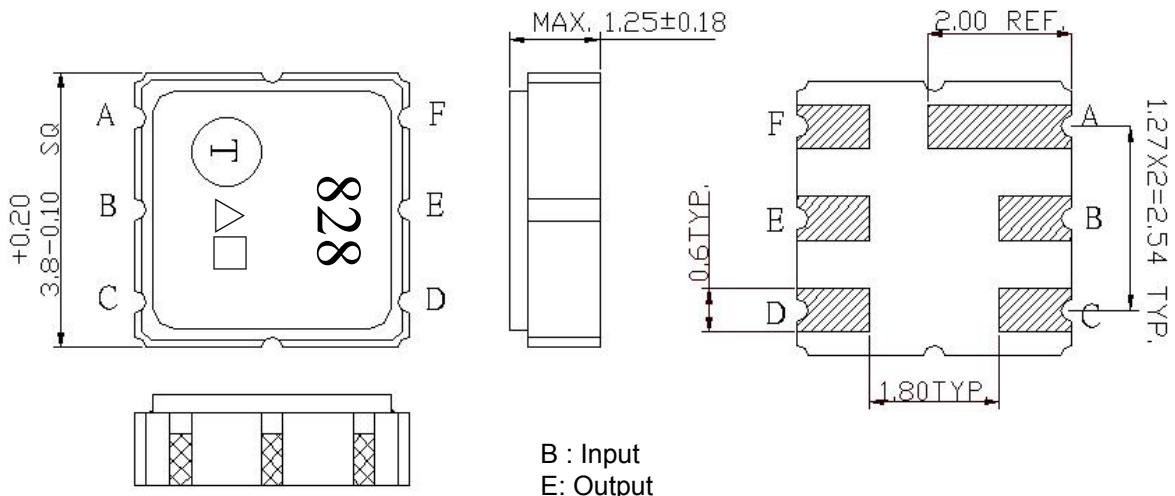


### D. FREQUENCY CHARACTERISTICS:

The response included the loss of matching circuit.



**E. OUTLINE DRAWING:**

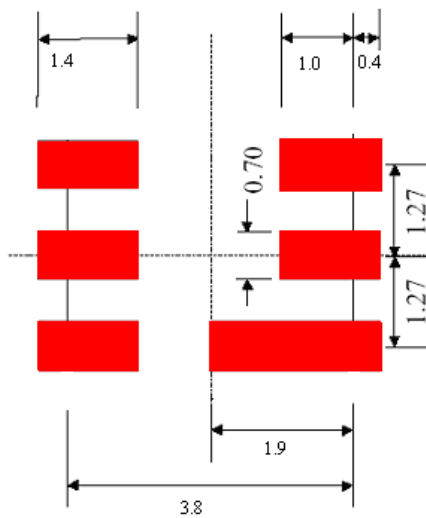


B : Input  
 E: Output  
 A,C,D,F Ground  
 □: Date Code(Follow the table provided by planner each year.)  
 Unit: mm

△ Product Year Code

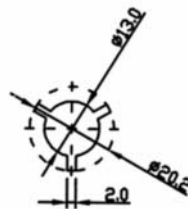
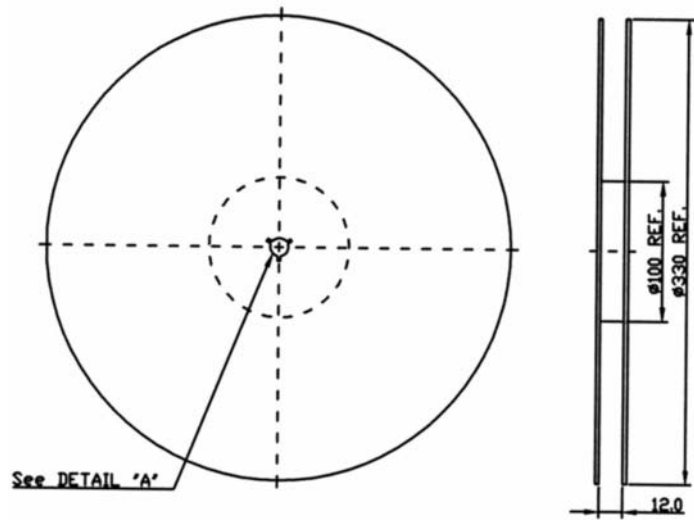
Year	2005	2006
	2007	2008
	2009	2010
Product Code	A	a

**F. PCB FOOTPRINT:**

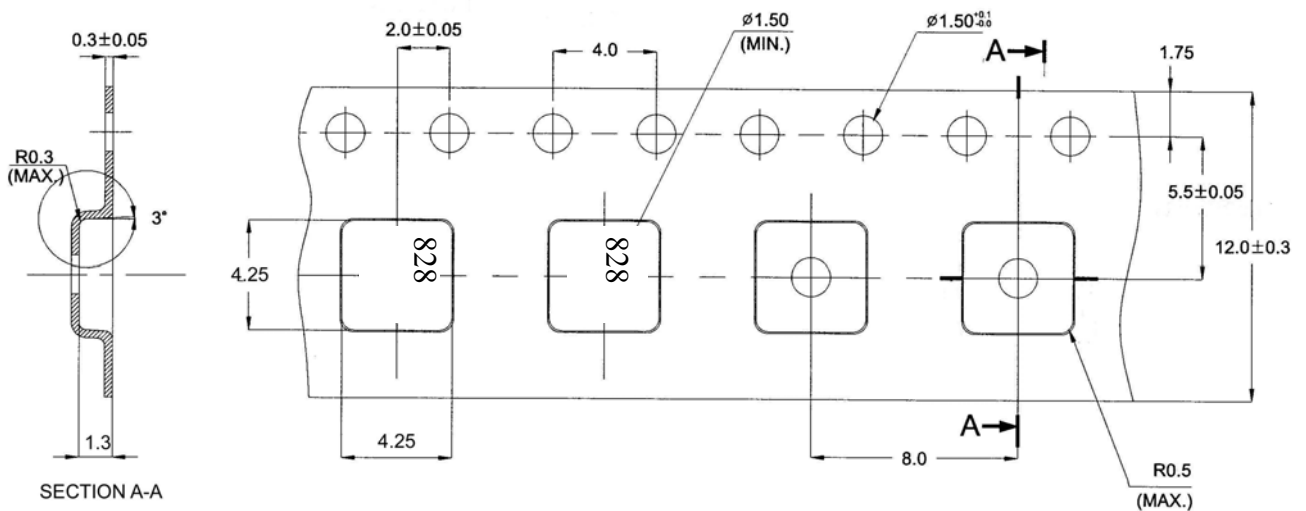


G. PACKING:

1. REEL DIMENSION



2. TAPE DIMENSION



G. REFLOW PROFILE:

