



SFF501G THRU SFF508G

Isolation 5.0 AMPS. Glass Passivated Super Fast Rectifiers



Voltage Range
50 to 600 Volts
Current
5.0 Amperes

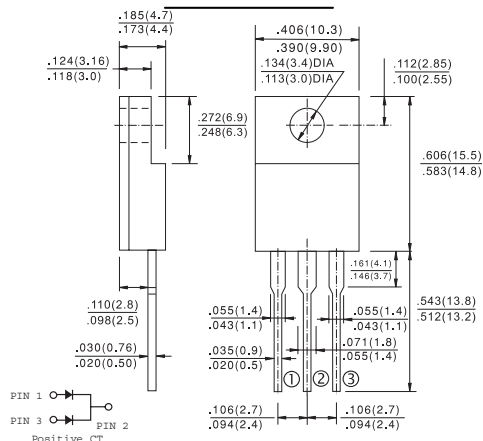
Features

- ✧ Low forward voltage drop
- ✧ High current capability
- ✧ High reliability
- ✧ High surge current capability

Mechanical Data

- ✧ Case: ITO-220AB molded plastic
- ✧ Epoxy: UL 94V-O rate flame retardant
- ✧ Terminals: Leads solderable per MIL-STD-202, Method 208 guaranteed
- ✧ Polarity: As marked
- ✧ High temperature soldering guaranteed: 260°C/10 seconds 0.25", (6.35mm) from case.
- ✧ Weight: 2.24 grams
- ✧ Mounting torque: 5 in – lbs. max.

ITO-220AB



Maximum Ratings and Electrical Characteristics

Rating at 25°C ambient temperature unless otherwise specified.

Single phase, half wave, 60 Hz, resistive or inductive load.

For capacitive load, derate current by 20%

| Type Number | Symbol | SFF 501G | SFF 502G | SFF 503G | SFF 504G | SFF 505G | SFF 506G | SFF 507G | SFF 508G | Units |
|--|----------------|-------------|----------|----------|----------|----------|----------|----------|----------|--------------------------------|
| Maximum Recurrent Peak Reverse Voltage | V_{RRM} | 50 | 100 | 150 | 200 | 300 | 400 | 500 | 600 | V |
| Maximum RMS Voltage | V_{RMS} | 35 | 70 | 105 | 140 | 210 | 280 | 350 | 420 | V |
| Maximum DC Blocking Voltage | V_{DC} | 50 | 100 | 150 | 200 | 300 | 400 | 500 | 600 | V |
| Maximum Average Forward Rectified Current .375 (9.5mm) Lead Length @ $T_c = 100^\circ\text{C}$ | $I_{(AV)}$ | 5.0 | | | | | | | | A |
| Peak Forward Surge Current, 8.3 ms Single Half Sine-wave Superimposed on Rated Load (JEDEC method) | I_{FSM} | 70 | | | | | | | | A |
| Maximum Instantaneous Forward Voltage @ 2.5A | V_F | 0.98 | | | 1.3 | | 1.7 | | | V |
| Maximum DC Reverse Current @ $T_A=25^\circ\text{C}$ at Rated DC Blocking Voltage @ $T_A=100^\circ\text{C}$ | I_R | 10.0 | | | | 400 | | | | μA μA |
| Maximum Reverse Recovery Time (Note 1) | T_{rr} | 35 | | | | | | | | nS |
| Typical Thermal Resistance (Note 3) | $R\theta_{JA}$ | 5.5 | | | | | | | | $^\circ\text{C}/\text{W}$ |
| Typical Junction Capacitance (Note 2) | C_j | 70 | | | | 50 | | | | pF |
| Operating Temperature Range | T_J | -65 to +150 | | | | | | | | $^\circ\text{C}$ |
| Storage Temperature Range | T_{STG} | -65 to +150 | | | | | | | | $^\circ\text{C}$ |

Notes: 1. Reverse Recovery Test Conditions: $I_F=0.5\text{A}$, $I_R=1.0\text{A}$, $I_{RR}=0.25\text{A}$
 2. Measured at 1 MHz and Applied Reverse Voltage of 4.0 V D.C.
 3. Mounted on Heatsink Size of 2 in x 3 in x 0.25 in, Al-Plate.

RATINGS AND CHARACTERISTIC CURVES (SFF501G THRU SFF508G)

FIG.1- REVERSE RECOVERY TIME CHARACTERISTIC AND TEST CIRCUIT DIAGRAM

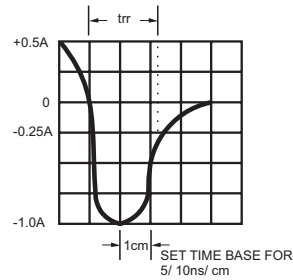
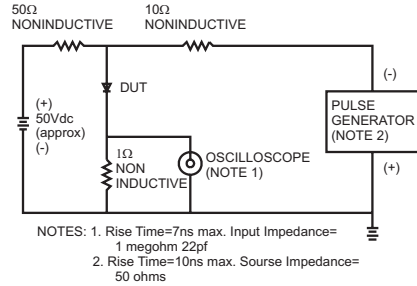


FIG.2- MAXIMUM FORWARD CURRENT DERATING CURVE

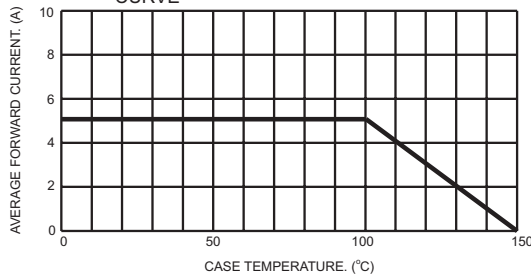


FIG.3- TYPICAL REVERSE CHARACTERISTICS

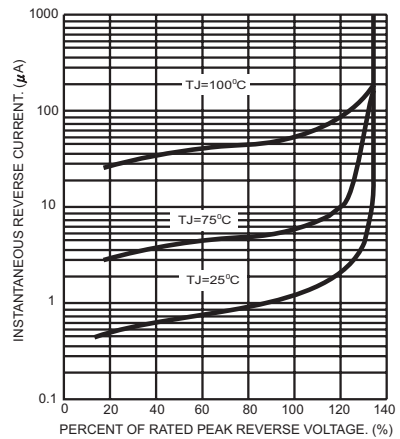


FIG.4- MAXIMUM NON-REPETITIVE FORWARD SURGE CURRENT PER LEG

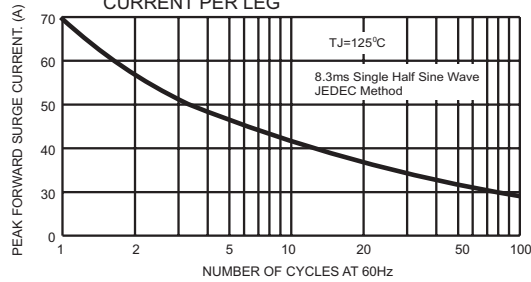


FIG.6- TYPICAL FORWARD CHARACTERISTICS PER LEG

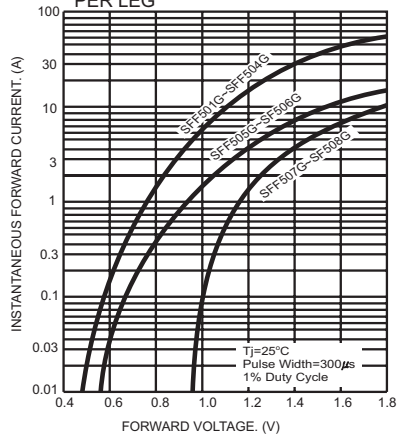


FIG.5- TYPICAL JUNCTION CAPACITANCE PER LEG

