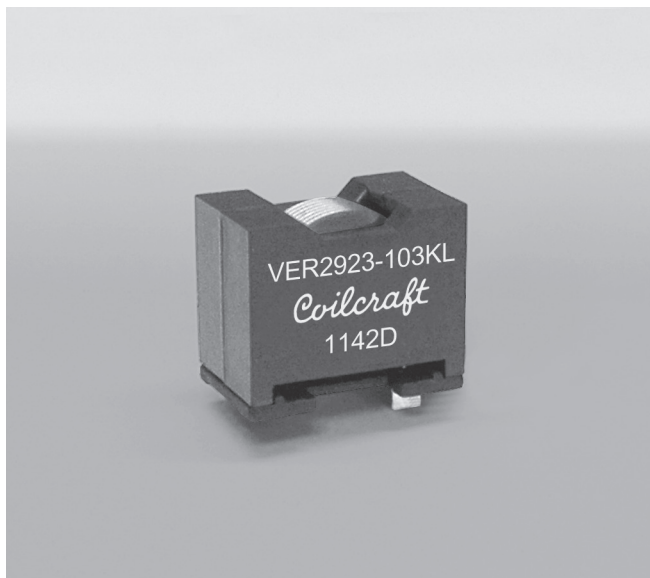


**NEW!**

# Shielded Power Inductors – VER2923



- Designed for high current power supply applications with saturation current ratings to over 100 Amps
- Ideal for use in Class-D applications
- Flat wire windings provide extremely low DC and AC resistance
- Vertical mounting provides a small footprint

**Core material** Ferrite

**Terminations** RoHS compliant tin-silver over copper. Other terminations available at additional cost.

**Weight** 37 g

**Ambient temperature** -40°C to +85°C with  $I_{rms}$  current, +85°C to +125°C with derated current

**Storage temperature** Component: -40°C to +85°C.  
Packaging: -40°C to +80°C

**Moisture Sensitivity Level (MSL)** 1 (unlimited floor life at <30°C / 85% relative humidity)

**Failures in Time (FIT) / Mean Time Between Failures (MTBF)**  
38 per billion hours / 26,315,789 hours, calculated per Telcordia SR-332

**Packaging** 25 parts per tray

**PCB washing** Only pure water or alcohol recommended

Part number	Inductance <sup>1</sup> ±10% (µH)	DCR (mOhms) <sup>2</sup>		SRF typ <sup>3</sup> (MHz)	Isat (A) <sup>4</sup>			Irms (A) <sup>5</sup>	
		nom	max		10% drop	20% drop	30% drop	20°C rise	40°C rise
VER2923-332KL	3.3	2.3	2.6	40	95.0	104	108	19	26
VER2923-472KL	4.7	2.3	2.6	30	63.0	69.0	72.0	19	26
VER2923-682KL	6.8	2.3	2.6	25	48.0	53.0	56.0	19	26
VER2923-103KL	10	2.3	2.6	20	30.0	34.0	37.0	19	26
VER2923-153KL	15	2.3	2.6	16	20.5	23.0	24.5	19	26
VER2923-223KL	22	2.3	2.6	13	12.2	14.7	16.4	19	26
VER2923-333KL	33	2.3	2.6	10	7.5	9.2	10.3	19	26

1. Inductance tested at 300 kHz, 0.1 Vrms on Agilent/HP 4192A.
  2. DCR measured on a Keithley 580 micro-ohmmeter or equivalent.
  3. SRF measured on an Agilent/HP 8753ES network analyzer.
  4. DC current at which the inductance drops the specified amount from its value without current.
  5. Current that causes the specified temperature rise of the winding from 25°C ambient. Temperature rise of the core is usually less than that of the winding.  
When  $I_{rms}$  is greater than  $I_{sat}$ ,  $I_{sat}$  is the more critical specification and  $I_{rms}$  is shown in gray type.
  6. Electrical specifications at 25°C.
- Refer to Doc 362 "Soldering Surface Mount Components" before soldering.

### Caution:

This series is not intended for use in high vibration environments. We advise using additional means of securing the part to the circuit board to ensure its adhesion.



www.coilcraft.com

**US** +1-847-639-6400 sales@coilcraft.com  
**UK** +44-1236-730595 sales@coilcraft-europe.com  
**Taiwan** +886-2-2264 3646 sales@coilcraft.com.tw  
**China** +86-21-6218 8074 sales@coilcraft.com.cn  
**Singapore** + 65-6484 8412 sales@coilcraft.com.sg

Document 834-1 Revised 02/15/12

© Coilcraft Inc. 2012

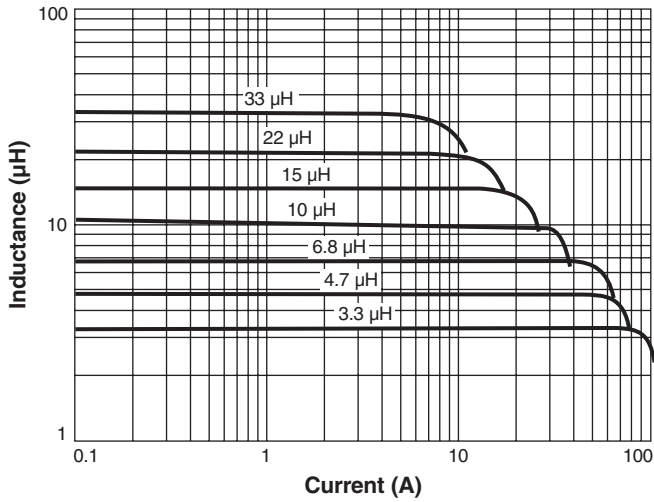
This product may not be used in medical of high risk applications without prior Coilcraft approval. Specification subject to change without notice. Please check out web site for latest information.

**NEW!**

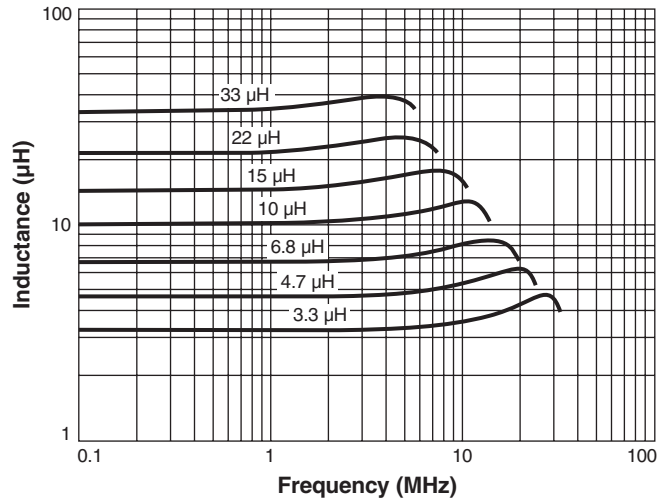


# Shielded Power Inductors - VER2923 Series

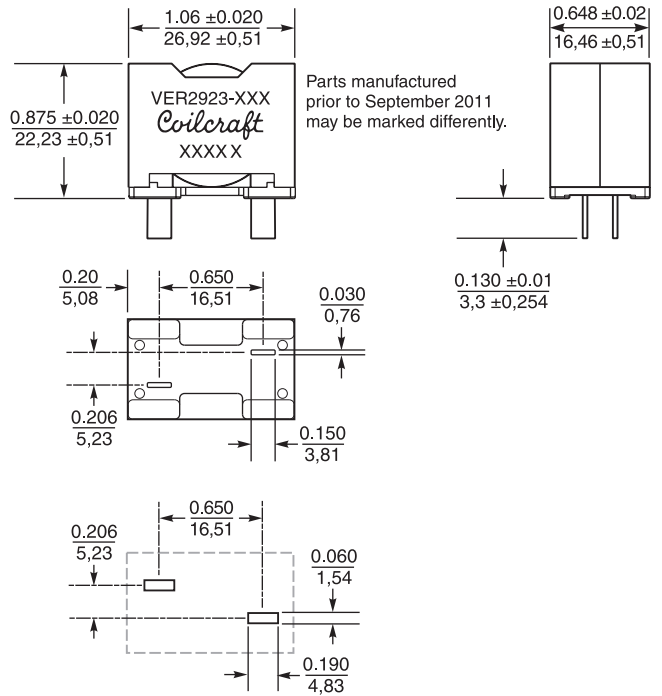
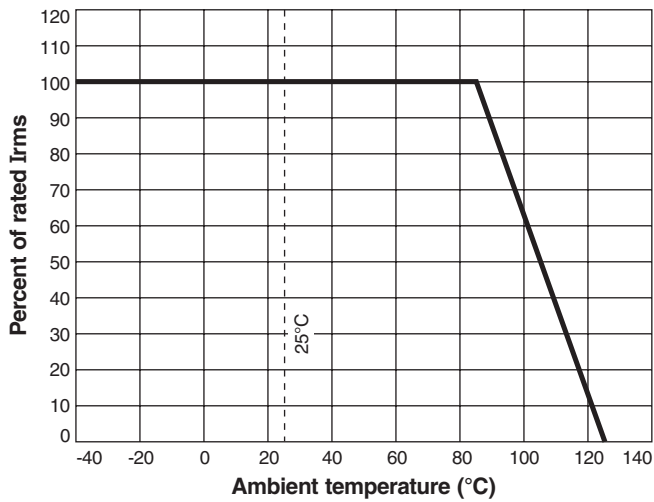
## L vs Current



## L vs Frequency



## Irms Derating



Parts manufactured prior to September 2011 may be marked differently.

**Recommended PC Board Layout**

Dimensions are in  $\frac{\text{inches}}{\text{mm}}$



**US** +1-847-639-6400 sales@coilcraft.com  
**UK** +44-1236-730595 sales@coilcraft-europe.com  
**Taiwan** +886-2-2264 3646 sales@coilcraft.com.tw  
**China** +86-21-6218 8074 sales@coilcraft.com.cn  
**Singapore** + 65-6484 8412 sales@coilcraft.com.sg

Document 834-2 Revised 02/15/12  
 © Coilcraft Inc. 2012  
 This product may not be used in medical of high risk applications without prior Coilcraft approval. Specification subject to change without notice. Please check out web site for latest information.