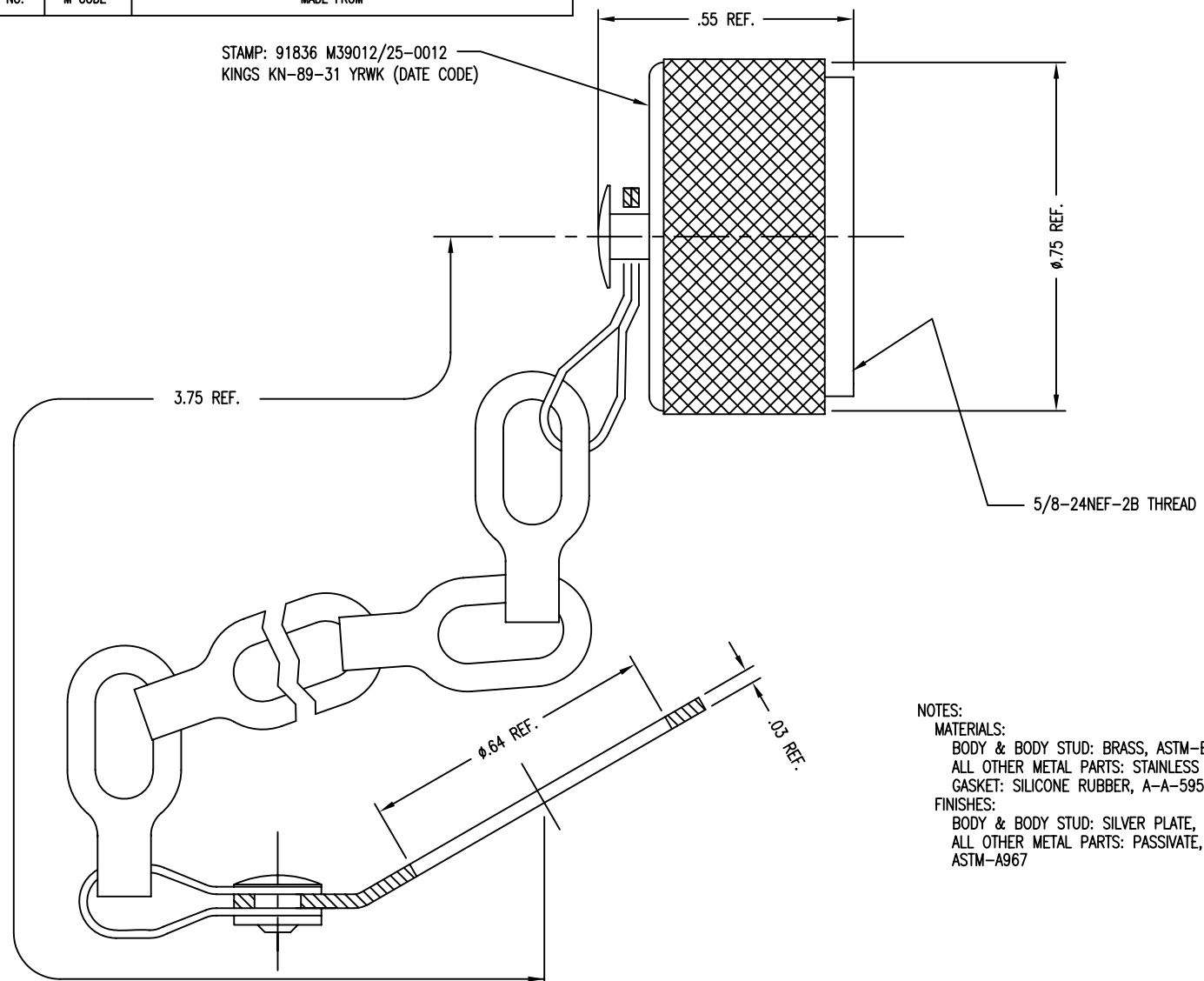


DASH NO.	M CODE	MADE FROM
----------	--------	-----------

STAMP: 91836 M39012/25-0012  
KINGS KN-89-31 YRWK (DATE CODE)



NOTES:  
MATERIALS:  
BODY & BODY STUD: BRASS, ASTM-B16  
ALL OTHER METAL PARTS: STAINLESS STEEL, 302  
GASKET: SILICONE RUBBER, A-A-59588.  
FINISHES:  
BODY & BODY STUD: SILVER PLATE, ASTM-B700  
ALL OTHER METAL PARTS: PASSIVATE, SAE-AMS-QQ-P-35 OR  
ASTM-A967

UNLESS OTHERWISE SPECIFIED  
1. ALL DIMENSIONS IN INCHES [MILLIMETERS].  
2. TOLERANCES:  
.XXX ±.004      .XX ±.010  
[.XXX ±.10]    [.XX ±.25]  
FRACTIONS: X/Y ±.010 [.25]      ANGLES: ± 1'  
★ CRITICAL DIMENSIONS

PART NO. KN-89-31

REVISIONS	
ISSUE	CHANGES
7	CN 39962 C REDRAWN HVN 06/14/07
J	ER15146 DRK 06/24/09

CUSTOMER SALES DRAWING

SCALE 4:1	
APPROX SURFACE AREA	
USED ON	
REF: SUPERSEDES MX-913/U	
CAP & SAFETY CHAIN, N M39012/25-0012	
DRAWN HVN	DATE 06/14/07
DESIGN JC	DATE 01/15/71
APPR.	DATE
<b>KINGS</b> by WINCHESTER ELECTRONICS	Winchester Electronics 82 Barnes Industrial Road North Wallingford, CT 06492
SDKN-89-31	
B	SIZE