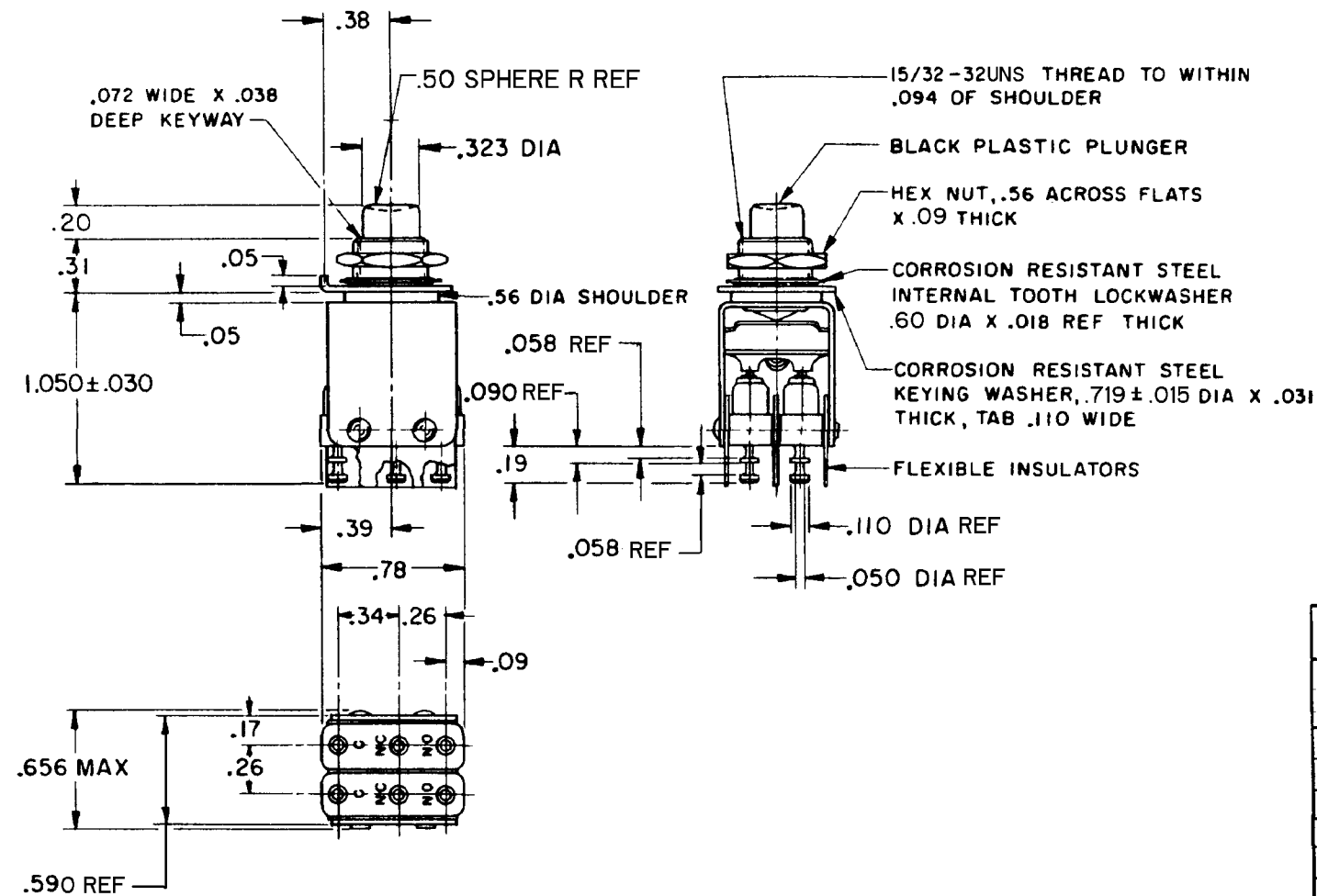


CATALOG LISTING
 2PB11-T2
 PAGE 1 OF 1
 REPLACES
 RELEASE NO
 CHECK
 REVISIONS
 A C082865
 JAL 25 APR 96
 B C083692
 DLT 24 JAN 97
 C C093156
 GJW 20 JUL 98
 D CO-93593
 PPF 22 OCT 98
 E CO-94273
 GJW 15 APR 99
 CHECK JAF 22 OCT 98
 CHECK JAF 25 APR 96
 DRAWN
 FORMTEK



SPECIFICATION DETAILS:		FOR END CUSTOMER USE	
STANDARD:		CONFORMS TO MILITARY P/N M8805/23-001 EXCEPT AS NOTED	
CONSTRUCTION:			
ENCLOSURE		UNSEALED	
CONTACT MATERIAL		FINE SILVER	
CASE, COVER, & PLUNGER		PHENOLIC	
CIRCUIT CONFIGURATION "IISM" TYPE BASIC		SPDT, NORMALLY CLOSED (2)	
PUSHBUTTON PLUNGER TRAVEL		SWITCHES DO NOT NECESSARILY OPERATE SIMULTANEOUSLY	
TERMINATION		BRASS WITH 60/40 TIN/LEAD SOLDER	
EXPOSED METALS		STAINLESS STEEL	
ELECTRICAL RATINGS:		250 VAC - 5 AMP	
		30 VDC INDUCTIVE RESISTIVE	
SEA LEVEL		3.0 AMPS	5.0 AMPS
50,000 FT		2.5 AMPS	5.0 AMPS
		MAXIMUM INRUSH - 24.0 AMPS	
DIELECTRIC			
FROM COMMON TO N.O. TERMINAL		1000 VOLTS RMS	
CHARACTERISTICS			
MECHANICAL LIFE		50,000 OPERATIONS	
ELECTRICAL LIFE		50,000 OPERATIONS	
TEMPERATURE RANGE		-55°C TO -85°C	
OPERATING FORCE		3.0 LB MAX	
TOTAL TRAVEL		.100 APPROX	
MOUNTING TORQUE		25 POUND INCHES	
HARDWARE		FURNISHED UNASSEMBLED	
REPLACEMENT		19PA39-TL	

THIS DRAWING COVERS A PROPRIETARY ITEM AND IS THE PROPERTY OF MICRO SWITCH, A DIVISION OF HONEYWELL. THIS DRAWING IS NOT TO BE COPIED OR USED WITHOUT THE APPROVAL OF MICRO SWITCH.

CHARACTERISTICS	ELECTRICAL DATA	THIRD ANGLE PROJECTION
	CONTACT ARRANGEMENT	SCALE FULL
		DO NOT SCALE PRINT
		UNLESS OTHERWISE SPECIFIED TOLERANCES ARE
		ONE PLACE (.0) ± .030
		TWO PLACE (.00) ± .015
		THREE PLACE (.000) ± .005
		ANGLES ±
		WEIGHT .55 OZ APPROX