

KB4647060 (KLB-520 O-08-T)

1. Descriptions

KB4647060 (KLB-520 O-08-T) is a high bright AlInGaP orange LED and has the optimized optical characteristics.

2. Features

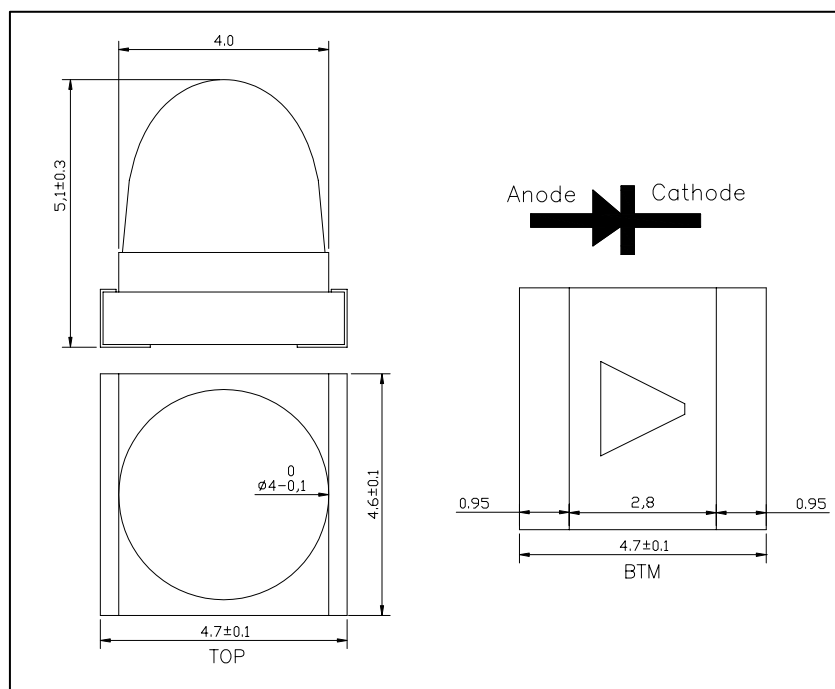
- ◆ Transparent epoxy lens
- ◆ High Optical Output
- ◆ Typical Luminous Intensity(IV)
: 20cd for Orange @ IF=20mA

3. Application

- ◆ Display
- ◆ Indicator
- ◆ Signage
- ◆ Auto Focus
- ◆ Amusement

4. Outline Dimensions and Material Descriptions

- ◆ Outline Dimensions



The contents of this data sheet are subject to change without advance notice for the purpose of improvement. When using this product, would you please refer to the latest specifications.

KB4647060 (KLB-520 O-08-T)**5. Absolute Maximums**

| Parameter | Symbol | Ratings | Unit |
|-------------------------------------|------------|------------|------|
| Reverse voltage | V_R | 5 | V |
| Forward current | I_F | 80 | mA |
| Pulse forward current ^{*1} | I_{FP} | 0.3 | A |
| Power dissipation | P_D | 250 | mW |
| Operating temperature | $T_{opr.}$ | -30 ~ +85 | °C |
| Storage temperature | $T_{stg.}$ | -40 ~ +100 | °C |
| Soldering Temperature ^{*2} | $T_{sol.}$ | 260 | °C |

*1. IFP Measured under duty $\frac{1}{100}$ @ $t_w=10ms$

*2. For MAX.5 seconds at the position of 2mm from the package

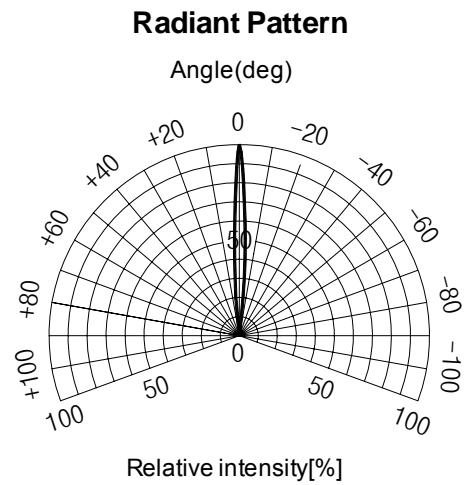
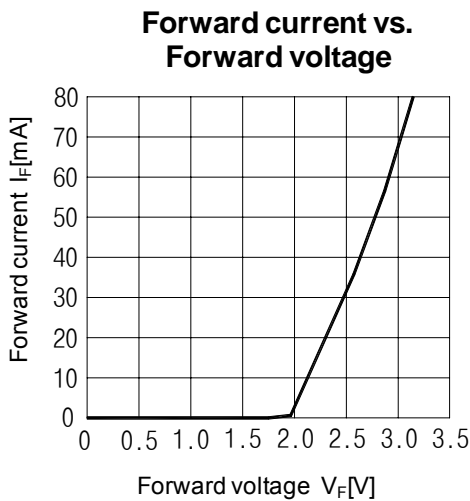
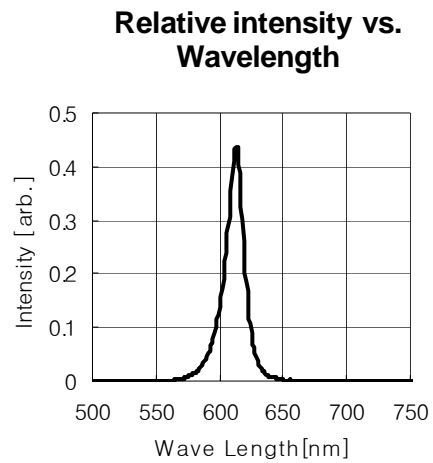
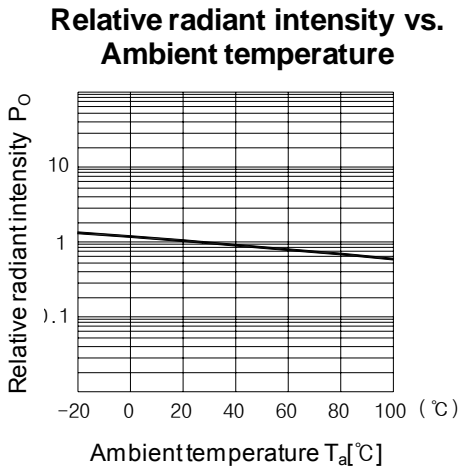
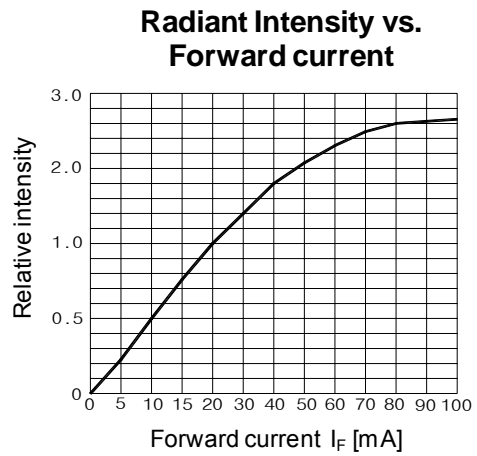
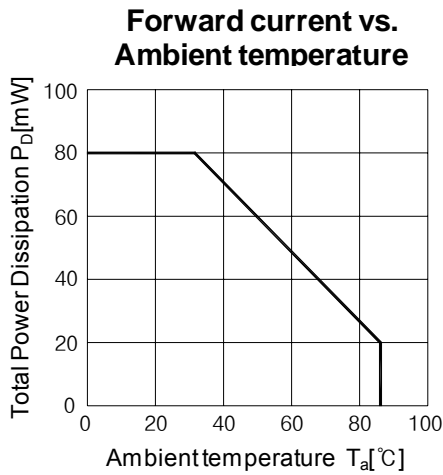
6. Electro-Optical Characteristics ($T_A = 25^\circ C$)

| Parameter | Symbol | Conditions | Min | Typ | Max | Unit |
|-------------------------|-----------------------|-----------------------|-----|-----|-----|---------|
| Forward voltage | V_F | $I_F = 20 \text{ mA}$ | 1.8 | 2.1 | 2.5 | V |
| Reverse current | I_R | $V_R = 5 \text{ V}$ | - | - | 50 | μA |
| Luminous Intensity | I_V | $I_F = 20 \text{ mA}$ | 20 | 30 | - | cd |
| Dominant Wave Length | λ_D | $I_F = 20 \text{ mA}$ | 600 | - | 610 | nm |
| Spectral half bandwidth | $\Delta\lambda$ | $I_F = 20 \text{ mA}$ | - | 15 | - | nm |
| Half angle | $2\Delta\theta_{1/2}$ | $I_F = 20 \text{ mA}$ | - | 8 | - | deg. |

The contents of this data sheet are subject to change without advance notice for the purpose of improvement.
When using this product, would you please refer to the latest specifications.

KB4647O60 (KLB-520 O-08-T)

7. Characteristic Graphs



The contents of this data sheet are subject to change without advance notice for the purpose of improvement. When using this product, would you please refer to the latest specifications.