

PRODUCT NUMBER  
5 5 1 0 2 - X X X - X X - X X X X

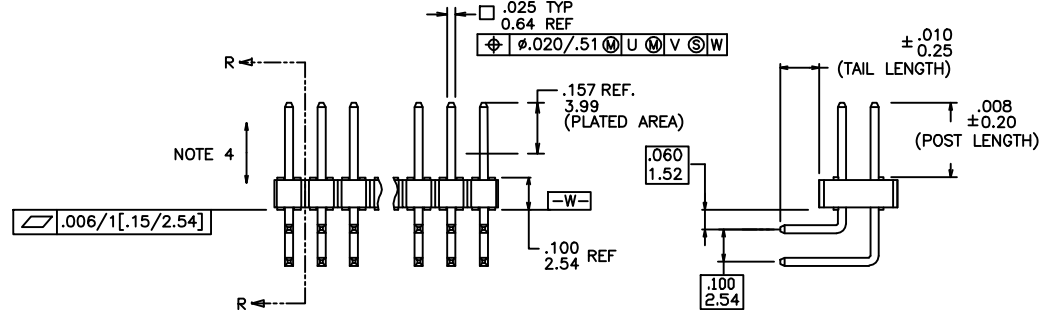
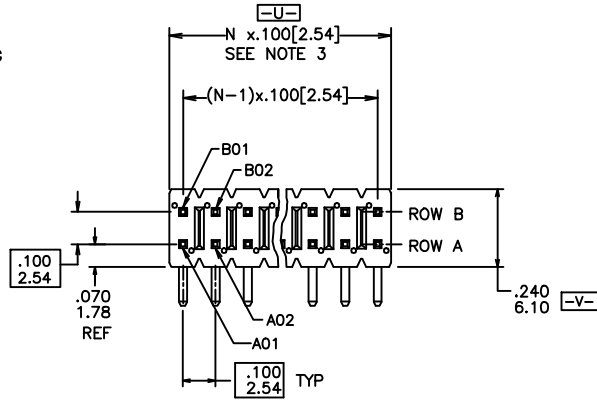
PLATING  
S=15µm[0.38µm]GOLD ON CONTACT AREA  
100µm[2.54µm]TIN ON TAIL (NOTE 14)  
G=30µm[0.76µm]GOLD ON CONTACT AREA  
100µm[2.54µm]TIN ON TAIL (NOTE 14)  
T=100µm[2.54µm]TIN ON CONTACT AREA AND ON TAIL (SEE NOTE 9 & 13)  
F=2µm[0.05µm]GOLD ON CONTACT AREA AND ON TAIL

PIN STYLE	POST	TAIL
11	0.230/5.84	0.090/2.29
17	0.230/5.84	0.120/3.05
12	0.230/5.84	0.190/4.83
34	0.318/8.08	0.100/2.54
35	0.318/8.08	0.120/3.05
36	0.318/8.08	0.200/5.08

RETENTION  
R= RETENTIVE LEG  
NOTE 6

POLARIZATION  
NOTE 7

POSITIONS PER ROW  
01 TO 36



LEAD FREE PRODUCT NUMBER  
5 5 1 0 2 - X X X X X X X X X LF

PLATING  
S=15µm[0.38µm]GOLD ON CONTACT AREA  
100µm[2.54µm]TIN ON TAIL (NOTE 14)  
G=30µm[0.76µm]GOLD ON CONTACT AREA  
100µm[2.54µm]TIN ON TAIL (NOTE 14)  
T=100µm[2.54µm]TIN ON CONTACT AREA AND ON TAIL (NOTE 9 & 13)  
F=2µm[0.05µm]GOLD ON CONTACT AREA AND ON TAIL

PIN STYLE	POST	TAIL
11	0.230/5.84	0.090/2.29
17	0.230/5.84	0.120/3.05
12	0.230/5.84	0.190/4.83
34	0.318/8.08	0.100/2.54
35	0.318/8.08	0.120/3.05
36	0.318/8.08	0.200/5.08

LEAD FREE  
NOTE 10 & 11

RETENTION  
R= RETENTIVE LEG  
NOTE 6

POLARIZATION  
NOTE 7

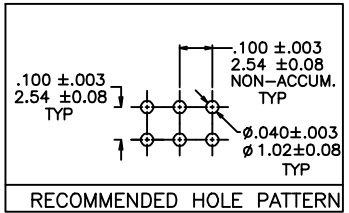
POSITIONS PER ROW  
01 TO 36

mat'l. code SEE NOTES 1 & 2				surface ISO 902	tolerance ISO 1101	projection ISO 1001	product family BERGSTIK
ltr	ecn no	dr	date	tolerances unless otherwise specified		INCH/MM	title .100 UNSHROUDED HDR. D/R R/A THRU HOLE
D	V21475	GIP	9/17/02	angles	XXXL01/XXXL03		scale 1:1
E	V03-0731	HTB	7/10/03	linear	XXXL06/XXXL013		dwg no 55102
F	M05-0118	MHT	6/03/05	0°±2'	XXXL020/XXXL005		sheet 1 of 2 size A3
G	M06-0268	MHT	7/17/06	dr	D.INGRAM	05/20/99	type Product Customer Drawing
H	M06-0435	MHT	10/31/06	engr	H.SUNDY	07/21/99	
J	M08-0237	MHT	8/25/08	chr	H.SUNDY	07/21/99	
K	M08-0279	MHT	9/30/08	appd	H.SUNDY	07/21/99	
sheet	revision	K	K				
index	sheet	1	2				

FCI  
FCIconnect.com  
Copyright FCI



Copyright FCI



NOTES:

- ① HOUSING MAT'L: HIGH TEMPERATURE THERMOPLASTIC.  
FLAME RETARDANT PER UL 94V-0  
COLOR: BLACK  
OR  
MINERAL FILLED LCP  
FLAME RETARDANT PER UL 94V-0  
COLOR: BLACK
- ② PIN MATERIAL: PHOSPHOR-BRONZE
- ③ TO DETERMINE DIMENSIONS:  
N = NUMBER OF POSITIONS PER ROW.  
EXAMPLE: 10 POS., N x .100[2.54]=1.00[25.40].
- ④ 2LBS/0.9KG MIN. PIN RETENTION IN EITHER DIRECTION
- 5. PACKAGED IN POLY BAGS
- ⑥ RETENTIVE LEG APPLICABLE TO TAIL LENGTH .120/3.05 ONLY.  
5LB/2.3KG MAX INSERTION FORCE AND .25LB./1KG MIN RETENTION FORCE  
PER RETENTIVE PIN USING .062/1.57 THICK CIRCUIT BOARD AND RECOMMENDED  
HOLE PATTERN. RETENTIVE LOCATION AT THE DISCRETION OF THE MANUFACTURER.  
OMIT FROM PRODUCT NUMBER IF THIS FEATURE IS NOT APPLICABLE.
- ⑦ FOR POLARIZATION SPECIFY POSITION NUMBER(i.e.. A03=ROW A POS 3)  
TO OMIT PIN.  
OMIT FROM PRODUCT NUMBER IF THIS FEATURE IS NOT APPLICABLE.
- 8. UNDERPLATING: 50μ"/1.27μm Ni.
- 9. PIN TIPS ON Sn PLATED PRODUCT MAY HAVE BARE METAL ON  
TWO SIDES, BOTH ENDS.
- ⑩ PART NUMBERS WITH "LF" SUFFIX AT THE END ARE LEAD FREE.
- ⑪ THIS PRODUCT MEETS EUROPEAN UNION DIRECTIVES AND OTHER  
COUNTRY REGULATION AS DESCRIBED IN GS-22-008.
- 12. THE HOUSING WILL WITHSTAND EXPOSURE TO 260°C PEAK TEMPERATURE  
FOR 20 SECONDS IN A CONVECTION, INFRA-RED OR VAPOR PHASE REFLOW  
OVEN. SEE APPLICATION NOTES/PROCEDURES IF THEY ARE AVAILABLE OR  
FOR 15 SECONDS IN A WAVE SOLDER APPLICATION WITH A 1.5mm  
MINIMUM THICK CIRCUIT BOARD.
- ⑬ "THIS PRODUCT HAS 100% PURE TIN PLATING IN THE INTERFACE AND  
HAS NOT BEEN TESTED FOR WHISKER GROWTH IN ALL INTERCONNECT  
ENVIRONMENTS."
- ⑭ PLATING OPTIONS:  
MAY BE EITHER GOLD OR GXT PLATED AT MANUFACTURER'S OPTION.

mat'l. code SEE NOTES 1 & 2		surface ISO 902	tolerance ISO 406 ISO 7001	projection 	product family BERGSTIK
ltr	ecn no	dr	date	tolerances unless otherwise specified	title .100 UNSHROUDED HDR. D/R R/A THRU HOLE
K				linear XXXL01/XXXL03 XXXL06/XXXL13 XXXL020/XXXL051	INCH/MM scale 1:1
				angles 0°±2'	dwg no 55102
				dr D.INGRAM 05/20/99	sheet 2 of 2 size A3
				engr H.SUNDY 07/21/99	type Product Customer Drawing
				chr H.SUNDY 07/21/99	
				appd H.SUNDY 07/21/99	
sheet	revision				
index	sheet				