

## FEMALE SOCKET CONNECTORS

.100" x .100" CENTERS



### PHYSICAL PROPERTIES

INSULATION MATERIAL: Glass reinforced thermoplastic rated UL 94V-0

COLOR: Blue

CONTACTS: Beryllium copper 30μ inches minimum gold over 50μ inches nickel in contact zone; tin/lead over nickel in termination area

### ELECTRICAL PROPERTIES

CURRENT RATING: 1 Amp

INSULATION RESISTANCE: >1 x 10<sup>9</sup> Ohms @ 500VDC

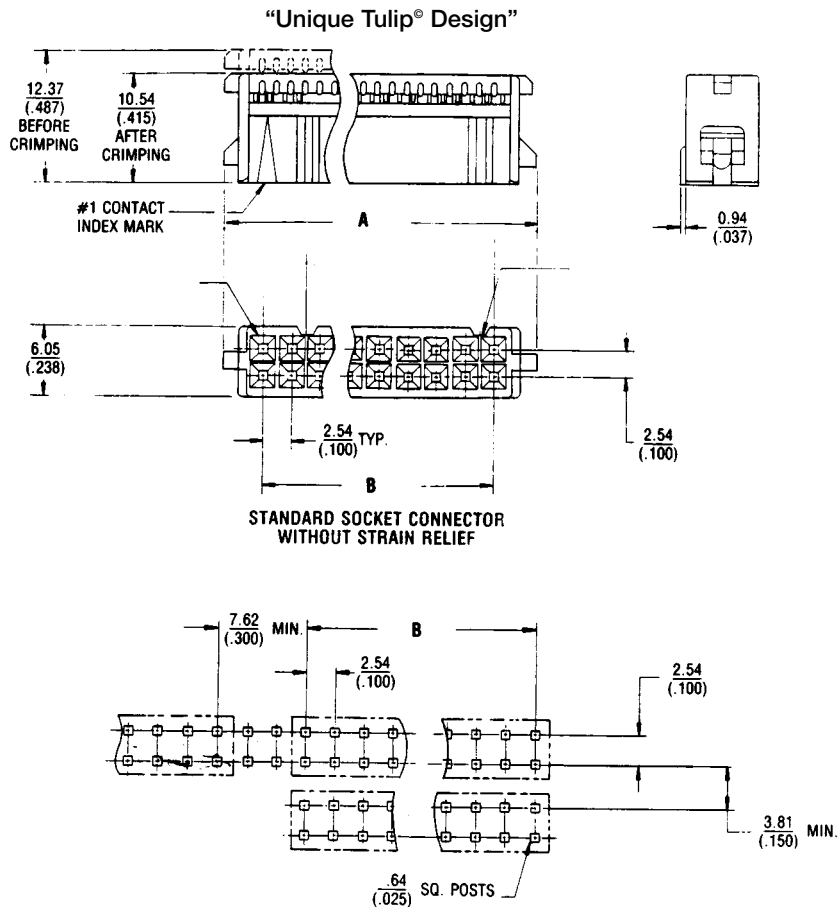
DIELECTRIC STRENGTH: > 500 VRMS at sea level

### ENVIRONMENTAL PROPERTIES

TEMPERATURE RATING: -55°C TO 125°C

### APPLICATION TOOLING

- HAND TOOL:** 779-2100 use Die 779-2151
- BENCH PRESS (MANUAL):** 779-3200 use Platen 779-3130 use Base Plate 779-3151
- BENCH PRESS (PNEUMATIC):** 779-3500XT use Platen 779-3130 use Base Plate 779-3151



### Ordering Information

SOCKET CONN.	SOCKET CONN. W/ STRAIN RELIEF	CATALOG NUMBERS		NO. OF POS.	DIMENSIONS IN MM (INCHES)		
		POLARIZED SOCKET CONN.	POLARIZED SOCKET W/ STRAIN RELIEF		A	B	C
609-0600M	609-0601M	609-0630	609-0641	6	12.09(.476)	5.08(.200)	12.19(.480)
609-1000M	609-1001M	609-1030	609-1041	10	17.17(.676)	10.16(.400)	17.27(.680)
609-1400M	609-1401M	609-1430	609-1441	14	22.25(.876)	15.24(.600)	22.35(.880)
609-1600M	609-1601M	609-1630	609-1641	16	24.79(.976)	17.78(.700)	24.89(.980)
609-2000M	609-2001M	609-2030	609-2041	20	29.87(1.176)	22.86(.900)	29.97(1.180)
609-2400M	609-2401M	609-2430	609-2441	24	34.95(1.376)	27.94(1.100)	35.05(1.380)
609-2600M	609-2601M	609-2630	609-2641	26	37.49(1.476)	30.48(1.200)	37.59(1.480)
609-3400M	609-3401M	609-3430	609-3441	34	47.65(1.876)	40.64(1.600)	47.75(1.880)
609-3600M	609-3601M	609-3630	609-3641	36	50.19(1.976)	43.18(1.700)	50.29(1.980)
609-4000M	609-4001M	609-4030	609-4041	40	55.27(2.176)	48.26(1.900)	55.37(2.180)
609-4400M	609-4401M	609-4430	609-4441	44	60.35(2.376)	53.34(2.100)	60.45(2.380)
609-5000M	609-5001M	609-5030	609-5041	50	67.97(2.676)	60.95(2.400)	68.07(2.680)
609-5600M	609-5601M	609-5630	609-5641	56	75.59(2.976)	68.58(2.700)	75.69(2.980)
609-6000M	609-6001M	609-6030	609-6041	60	80.67(3.176)	73.66(2.900)	80.77(3.180)
609-6400M	609-6401M	609-6430	609-6441	64	85.75(3.376)	78.74(3.100)	86.05(3.380)