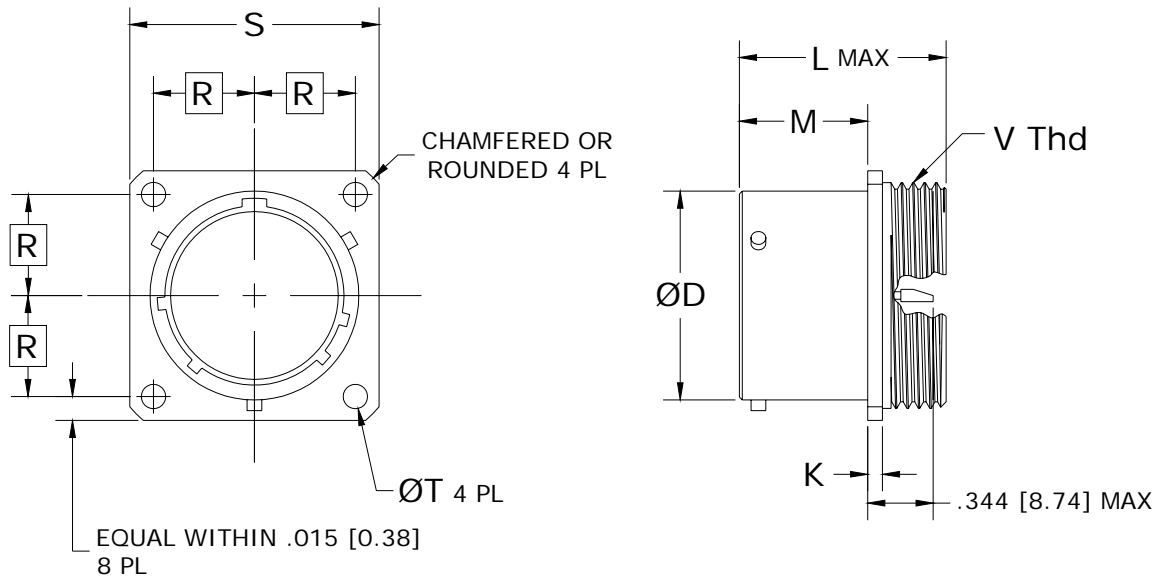


MS27469

MIL-DTL-38999

Wall Mount Hermetic Receptacle (with Rear Accessory Provision)

Series I Receptacles



SHELL SIZE	ØD +.001/-0.005 [+0.03/-0.13]	K +.031/-0.000 [+0.79/-0.00]	L MAX	M +.000/-0.005 [+0.00/-0.13]	R	S ±.020 [±0.51]	ØT +.010/-0.005 [+0.25/-0.13]	VV Thd CLASS 2A UNEF
9	.572 [14.53]	.062 [1.57]	1.093 [27.76]	.659 [16.74]	.359 [9.13]	.938 [23.83]	.128 [3.25]	.6875-24
11	.700 [17.78]	.062 [1.57]	1.093 [27.76]	.659 [16.74]	.406 [10.31]	1.031 [26.19]	.128 [3.25]	.8125-20
13	.850 [21.59]	.062 [1.57]	1.093 [27.76]	.659 [16.74]	.453 [11.51]	1.125 [28.58]	.128 [3.25]	.9375-20
15	.975 [24.77]	.062 [1.57]	1.093 [27.76]	.659 [16.74]	.484 [12.31]	1.219 [30.96]	.128 [3.25]	1.0625-18
17	1.100 [27.94]	.062 [1.57]	1.093 [27.76]	.659 [16.74]	.531 [13.49]	1.312 [33.32]	.128 [3.25]	1.1875-18
19	1.207 [30.66]	.062 [1.57]	1.093 [27.76]	.659 [16.74]	.578 [14.61]	1.438 [36.53]	.128 [3.25]	1.3125-18
21	1.332 [33.83]	.062 [1.57]	1.093 [27.76]	.659 [16.74]	.625 [15.88]	1.562 [39.67]	.128 [3.25]	1.4375-18
23	1.457 [37.01]	.062 [1.57]	1.093 [27.76]	.659 [16.74]	.687 [17.46]	1.688 [42.88]	.147 [3.73]	1.5625-18
25	1.582 [40.18]	.062 [1.57]	1.093 [27.76]	.659 [16.74]	.750 [19.05]	1.812 [46.02]	.147 [3.73]	1.6875-18

DIMENSIONS ARE IN INCHES [MILLIMETERS]